

Product datasheet for **RC224673**

ZNF295 (ZBTB21) (NM_001098403) Human Tagged ORF Clone

Product data:

Product Type:	Expression Plasmids
Product Name:	ZNF295 (ZBTB21) (NM_001098403) Human Tagged ORF Clone
Tag:	Myc-DDK
Symbol:	ZNF295
Synonyms:	ZNF295
Mammalian Cell Selection:	Neomycin
Vector:	pCMV6-Entry (PS100001)
E. coli Selection:	Kanamycin (25 ug/mL)



[View online »](#)

**ORF Nucleotide
Sequence:**

>RC224673 representing NM_001098403
 Red=Cloning site Blue=ORF Green=Tags(s)

TTTTGTAATACGACTCACTATAGGGCGGCCGGAATTCGTGACTGGATCCGGTACCGAGGAGATCTGCC
 GCC**CGGATCGCC**

ATGGAGGGATTACTGCATTACATCAACCCTGCACACGCCATTTCTCTCCTAAGTGCCTGAATGAGGAGC
 GTCTCAAAGGACAGCTGTGTGATGTGCTGCTGATTGTTGGAGACCAAAAGTTCAGCTCATAAAAACGT
 CTTGGCTGCCAGCAGCAATACTTTAGAGTTTATTACAAAAAAGGAAAATGAGTCACAAAACGTATTT
 CAGCTTGACTTCTGTGAGCCAGATGCTTTTGATAATGTTTTAACTACATTTATTCTTCTCTATTTG
 TTGAGAAGAGCAGCCTTGTGCTGTGCAAGAACTGGCTATAGTCTTGGGATTTCTTTCTGACTAACAT
 CGTTTCTAAAACACCTCAAGCCCCCTTCCAACGTGTCTAATAGAAAAAAGTGTGTTGAGAAGATGAT
 GAAAACAGTTCTCAAAGAGAAGTGTATTGTTGTCAAAGTAGAAACGAAGCGCAAGGAAAACTGTTA
 GTCAAAATCAACCCGATGAAGCCATCTCCCGCCCTCTCCTAGCATTGCAGTCAAGGCCAATACCAA
 TAAGCCACATGTCCAAAACCAATAGAACCACTCATAATTTGTCATTAAGTAAAAGAGTTGGCCGAAA
 GATAGTTCTGTGTATATGCAAAGTCTCTTGTAGCATTCTGGATCTTTGGATGATCCTAATAGAATCAGTT
 TGGTGAAGAAGAAATGCAGTGTGCTTCAAGCCTCTGCAAGACAGAGAAGCTATGGATGATAAACCCAGG
 TGTGAGTGGTCAGCTTCCAAAAGGAAAAGCTCTAGAGCTGGCTTTGAAGAGACCAGGCCACCTGTTTTG
 TCTGTTGTAGCTCATCAGAGACTCCCTATCTATTAAGAAAAGTAAACAAAGGAAATGGTCAAGGTGAAG
 ATAGAACTTGTGTACTATTCAAAGTTAGGCTTAGTGATCCCATCCAGTGGATCTGTTCTGGAACCA
 AAGCATTGACAGGAGTGGCCACTTGTAAAGAGTCTCCTCAGACGGTCAATGTCGATGGATAGCCAGTT
 CCTGTCTATTACCTCCATAGATTTGAAATCTCCAGGGATCATCTTCGGTGTCCAGTGCATGCACAG
 GGAATGTGTTGTGCTTTATCTCAGAAGTCATCTTTAAAAGATTGTAGTGAAAAAACCCCTAGATGA
 CAGGCCTCAAGTGCTACAACCGCATCGCCTCAGTCTTTAGTGCTTCTCAGTCAACAGACAGGGAGGGA
 GCTTCCCCTGTGACTGAGGTGCGCATAAAGACTGAGCCAGCAGCCCGTGTCCGACCCCTCGGACATCA
 TCCGCGTCACTGTGGGAGATGCGGCAACAACAGCAGCTGCCTCATCTTCGTCCGTCACAAGAGACCTGTC
 TCTGAAAACAGAAGATGACCAAAAAGACATGAGCAGACTCCAGCAAAAAGGAGGTTCCAAGCGGACCGA
 AGATTGCCGTTTAAAGATTAAGGTGAATGAGCACGGGTCTCCTGTGTCAGAAGATAATTTTGAGGAAG
 GCTCAAGCCCTACTCTCCTTGTGCAGATTTTCCAGATTCTGATTTGAATAAAGACGAATTTGAGCAAGG
 AAGCCACGAGCGGCTGTGCCGAACGCGCCGTCTGCCCTTACTGCAGCCTCAGGTTTTTCTCGCCGAG
 CTGAAGCAAGAACACGAGAGCAAGTGTGAGTATAAGAAGCTGACCTGCCTCGAGTGCATGCGCACCTTCA
 AGTCTCTTTAGCATCTGGCGGACCAGGTTGAAGTCCATAATCAGAACAACATGGCACCCACCGAAAA
 CTTTTCTTTGCCGTTTTGGACCACAATGGTGTGTGACTGGTCTTCAAGGCCCAATCCAGCCTGAG
 CCCAACAAAGTAAACCACATCGTCACCACAAAAGACGACAACGTGTTCAAGTATTCTTCAAGCAAGTTA
 ACTTCGACTCGGAAGATTCCTCTTGTCTTCCCGAAGACCTTAGTCTTCCAAGCAACTGAAAATCCAAGT
 CAAAGAGGAGCCTGTGGAGGAGGCTGAAGAAGAGGCACCCGAGGCCAGCACAGCCCCAAAGAAGCGGGT
 CCTAGCAAAGAAGCCAGCCTGTGGCCCTGCGAGAAGTGTGGGAAGATGTTACGGTGCATAAGCAGCTGG
 AGCGTCAACAGGAGCTTCTGTGCTGTGAAACCATTTATTTGTACGTGTGCAACAAAGCTTTTCGCAC
 TAATTTTCGACTCTGGAGTCACTTCCAATCGCACATGTCTCAGGCTTCAAGGAATCGGCACATAAGGAA
 TCTGAGGTGTGCCCTGTTCCACAAAACCTCCCTCTCCACCACCTTGCCACCGCCACCACCACTGCCCA
 AGATCCAGCCTCTGGAGCCTGACAGCCCCACAGGCTGTCCGAAAACCCAACTCCAGCCACAGAAAAACT
 GTTTGTGCCCAAGAATCAGACACCCTTTTTTACCATGCCCCACCCTTTAGCAATCACATTTAAAGA
 CAGTTTATGTGTAACCTTTGCCACAGGACATCAAGACTGCATTTAGTCTTTGGAGTACGAACAAACAC
 ACAAT

ACGCGTACGCGGCCGCTCGAGCAGAAACTCATCTCAGAAGAGGATCTGGCAGCAATGATATCTGGATT
 ACAAGGATGACGACGATAAGGTTTAA

Protein Sequence: >RC224673 representing NM_001098403
 Red=Cloning site Green=Tags(s)

MEGLLHYINPAHAISLLSALNEERLKGQLCDVLLIVGDQKFAHKNVLAASSEYFQSLFTNKENESQTVF
 QLDFCEPDAFDNVLNYIYSSSLFVEKSSLAAVQELGYSLGISFLTNIVSKTPQAPFPTCPNRKKVFVEDD
 ENSSQKRSVIVCQSRNEAQGKTVSQNQPDVSHSRPSPSIAVKANTNKPHVPKPIEPLHNLSTTEKSWPK
 DSSVVYAKSLEHSGSLDDPNRISLVKRNAVLPSPKPLQDREAMDDKPGVSGQLPKGKALELALKRPPVPL
 SVCSSSETPYLLKETNKGNGQGEDRNLLYYSKLGLVIPSSGSGSGNQSIDRSGPLVKSLRRSLSMSQV
 PVYSPSIDLKSSQGSSSVSDAPGNVLCALSQKSSLKDCSEKTALDDRPQVLQPHRLRSFSASQSTDREG
 ASPVTEVRIKTEPSSPLSDPSDIIRVTVGDAATTAASSSSVTRDLCLKTEDDQKMSRLPAKRFFQADR
 RLPFKKLVNEHGSPVSEDNFEEGSSPTLLDADFSDLNKDEFEQGSHERLCRNAAVCPYCSLRFFSPE
 LKQEHESKCEYKLLTCECMRTFKSSFSIWRHQVEVHNQNMPTENFSLPVLDHNGDVTGSSRPQSQPE
 PNKVNHI VTTKDDNVFSDSSEQVNFDSSEDSSCLPEDLSL SKQLKIQVKEEPVEEAEEEAPEASTAPKEAG
 PSKEASLWPCEKCGKMFVHKQLERHQELLCSVKPFICHVCNKAFRTNFRLWSHFQSHMSQASEESAHKE
 SEVCPVPTNSPSPPLPPPPPLPKIQPLEPDSPTGLSENPTATEKLFVPQESDTLFYHAPPLSAITFKR
 QFMCKLCHRTFKTAFSLWSHEQTHN

TRTRPLEQKLISEEDLAANDILDYKDDDDKV

Chromatograms: https://cdn.origene.com/chromatograms/mk8045_d09.zip

Restriction Sites: SgfI-MluI

Cloning Scheme:

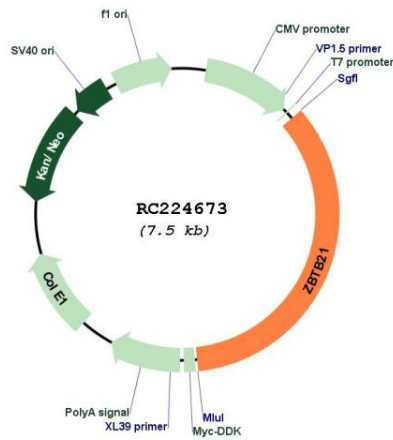
Cloning sites used for ORF Shuttling:



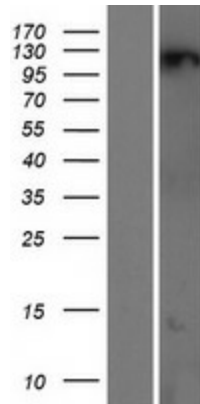
* The last codon before the Stop codon of the ORF

ACCN:	NM_001098403
ORF Size:	2595 bp
OTI Disclaimer:	The molecular sequence of this clone aligns with the gene accession number as a point of reference only. However, individual transcript sequences of the same gene can differ through naturally occurring variations (e.g. polymorphisms), each with its own valid existence. This clone is substantially in agreement with the reference, but a complete review of all prevailing variants is recommended prior to use. More info
OTI Annotation:	This clone was engineered to express the complete ORF with an expression tag. Expression varies depending on the nature of the gene.
Components:	The ORF clone is ion-exchange column purified and shipped in a 2D barcoded Matrix tube containing 10ug of transfection-ready, dried plasmid DNA (reconstitute with 100 ul of water).
Reconstitution Method:	<ol style="list-style-type: none">1. Centrifuge at 5,000xg for 5min.2. Carefully open the tube and add 100ul of sterile water to dissolve the DNA.3. Close the tube and incubate for 10 minutes at room temperature.4. Briefly vortex the tube and then do a quick spin (less than 5000xg) to concentrate the liquid at the bottom.5. Store the suspended plasmid at -20°C. The DNA is stable for at least one year from date of shipping when stored at -20°C.
RefSeq:	NM_001098403.2
RefSeq Size:	6876 bp
RefSeq ORF:	2598 bp
Locus ID:	49854
UniProt ID:	Q9ULJ3
Cytogenetics:	21q22.3
Protein Families:	Transcription Factors
MW:	95.6 kDa
Gene Summary:	Acts as a transcription repressor.[UniProtKB/Swiss-Prot Function]

Product images:



Circular map for RC224673



Western blot validation of overexpression lysate (Cat# [LY420568]) using anti-DDK antibody (Cat# [TA50011-100]). Left: Cell lysates from untransfected HEK293T cells; Right: Cell lysates from HEK293T cells transfected with RC224673 using transfection reagent MegaTran 2.0 (Cat# [TT210002]).