

Product datasheet for **RC224664**

BAI2 (ADGRB2) (NM_001703) Human Tagged ORF Clone

Product data:

Product Type:	Expression Plasmids
Product Name:	BAI2 (ADGRB2) (NM_001703) Human Tagged ORF Clone
Tag:	Myc-DDK
Symbol:	BAI2
Synonyms:	brain-specific angiogenesis inhibitor 2; Brain-specific angiogenesis inhibitor-2
Mammalian Cell Selection:	Neomycin
Vector:	pCMV6-Entry (PS100001)
E. coli Selection:	Kanamycin (25 ug/mL)
ORF Nucleotide Sequence:	>RC224664 representing NM_001703 Red=Cloning site Blue=ORF Green=Tags(s)

TTTTGTAATACGACTCACTATAGGGCGGCCGGAATTCGTCGACTGGATCCGGTACCGAGGAGATCTGCC
GCC**CGATCGCC**

ATGGAGAATACAGGTTGGATGGGCAAGGGACATAGGATGACCCAGCCTGTCCCCTTACTGTCTGTGA
TTCTGTCCCTGCGCTGGCCACCGCTTCGACCCCGCCCCAGTGCCTGCTCTGCCCTGGCTCGGGTGT
GCTCTACGGGGCTTCTCGCTGCAGGACCTTTTCTACCATCGCCTCGGGCTGCTCTGGACCCTGGAG
AACCTGACCCACCAAGTACTCCCTCTACCTGCGCTTCAACCGCAGGAGCAGGTGTGCGCACACTTTG
CCCCCGCTGTGCCCTGGACCACTACCTGGTCAACTTACCTGCCTGCGGCCTAGCCCCGAGGAGGC
GGTGGCCAGGCGGAGTCAAGAGTGGGGCGCCAGAAGAGGAGGAGGCAGAGGCGGACGGGGTTGGAG
CTGTGCAGCGGCTCAGGCCCTTACCTTCTGCACTTCGACAAGAACTTCGTGCAGCTGTGCCTGTCCG
CTGAGCCCTCCGAGGCCCGCGCTGTGGCGCCCGCTGCCCTAGCCTTCCGCTTGTGCGAGGTCTTGT
CATCAACAACAACAACCTAGCCAATTCACCTGTGGTGTGCTCTGCCGCTGGAGTGGAGTGTGGCCGC
GCTGCCGCGAGGGCTGCGGCTTTGCTCAGCCAGGCTGCAGTGCCTGGAGAGGCGGGGGCCGGCTCCA
CCACCACCATCTCCAGGCCCTCTGTGCCACACCTGTCCAATGCCTGGTCCCGGGGGCCAGC
CCCACCTGCTGAGGCCGATTTGCACTCGGGGAGCAGCAATGATCTGTTTACAACCGAGATGAGATATGTT
GAGGAGCCGGAAGAGGAACCGAAAGTAAAACCCAGTGGCCGAGGTCTGCAGATGACCTGGCTATACA
TGGCGCAGACAGGCGACCCGCGCTGAGGAGTGGTCCCGTGGAGCGTGTGTTCCCTGACGTGTGGCA
GGGTCTGCAGGTGCGGACCCGCTCCTGTGTGCTCCTCCCTATGGGACCTGTGCAGCGGCCCTGCGG
GAGACCAGGCCCTGCAACAATTCAGCCACCTGCCAGTGCACGGCGTGTGGGAGGAGTGGGGTCTGGA
GCCTGTGCTCCCGCAGCTGCGGGCGGGGTCCCGAGCCGGATGCGGACCTGCGTCCCCCCAGCACGG
CGGCAAGGCTGCGAGGGTCTGAGCTGCAGACTAAGCTCTGCAGTATGGCTGCCTGCCCGTGGAAAGGC
CAGTGGTTAGAATGGGGTCCCTGGGGCCATGCTCCACGCTCTGTCCAATGGGACCAACAGCGCAGCC
GGAAGTGCAGCGTGGCGGCCAGCCTGGGCCACATGCACGGTGCCTCACTGACACCCGGAGTGCAG
CAACCTCGAGTCCCGGCCACTGATAGCAAGTGGGGCCATGGAATGCGTGGAGCCTGTGCTAAGACG



[View online >](#)

TGTGACACAGGCTGGCAGCGCCGCTTCCGCATGTGCCAGGCCACGGGCACGCAGGGCTACCCCTGCGAGG
GCACCGGAGAGGAGGTGAAGCCTTGTAGTGAGAAGAGGTGCCAGCCTCCATGAGATGTGCAGGGATGA
GTACGTGATGCTGATGACGTGGAAGAAGGCAGCTGCTGGCGAGATCATCTACAACAAGTGCCCCCGAAT
GCCTCAGGGTCTGCCAGCCGCCGCTGTCTCCTCAGTGCCCAAGGCGTGGCGTACTGGGGGTGCCAGCT
TTGCTCGCTGCATCTCCCATGAGTACCGCTACCTGTATCTGTCACTTAGGGAGCACCTGGCCAAGGGGCA
GCGCATGTGGCAGGCGAGGGCATGTGCGAGGTGGTGGCAGCCTGCAGGAGTACTGGCCCGGCGCACC
TACTATAGTGGGACCTGCTCTTCTCTGTGGACATTCTGAGGAATGTCACTGACACCTTTAAGAGGGCCA
CCTACGTGCCCTCGGCTGATGATGTGCAGCGCTTCTTCCAGGTGGTGAAGTTCATGGTGGATGCGGAAAA
CAAGGAGAAGTGGGACGATGCTCAGCAGGTGTCCCTGGCTCTGTGCACCTGCTCCGTGTCGTGGAGGAC
TTCATTACCTGGTGGGCGATGCTCTCAAGGCCTTCCAGAGCTCTCTGATTGTCACAGATAATCTAGTGA
TCAGCATTAGCGAGAGCCCGTCTCAGCTGTGTCCAGTGACATCACGTTCCCATGCGGGGCCGCCGGG
CATGAAGGACTGGGTGGGCACTCAGAGGACCGCCTTCTTCCCAAGGAGGTGCTCAGCCTCTCTCC
CCAGGGAAGCCAGCCACATCTGGGGCAGCAGCCAGCCTGGCAGGGGAGGGGCCAGGAACGTTGCTC
CTGGCCAGGCCACTCCACCAGCGCCTCTCCAGCAGACCCTGATGAGTCTCTACTTTGTGATCGG
TGCTGTACTCTACCGCACCTTGGCCTCATCTGCCGCTCCAGGCCCGCTGGCCGTACATCCCGG
GTGATGACAGTACTGTGCGCCCCCTACCCAGCCTCCAGCTGAGCCCCATCACTGTGGAGCTCTCT
ACATCATCAATGGGACCACGGATCCCCATTGCGCCAGCTGGGACTACTCCAGAGCAGATGCCAGCTCAGG
AGACTGGGACACTGAAAATTGCCAGACCCTGGAGACCCAGGCAGCTCACACCCGCTGCCAGTGCAGCAC
CTGTCCACCTTTGCTGTACTAGCCAGCCGCCAAGGACCTGACCCTGGAGCTGGCGGGTCCCCCTCGG
TCCCCCTGGTGATCGGCTGTGACGTGTGTCATGGCGTGTCAACCCTGCTCGCCATCTATGCCGCTT
TTGGAGTTTCATAAAATCTGAACGCTCCATCATCTTGTGAACCTCTGCCTGTCCATCTTGGCATCAAC
ATCCTGATCCTCGTGGCCAGTCCCGGTGCTGAGCAAGGCGTGTGCACCATGACGGTGCCTTCTCTG
ACTTCTTCTTCTCCTCCTTTTGTGGTGTACCGAGCCTGGCAGTCTACTGGCTGTCACTTGG
GCGGATGCGCACCCGCTCGTTTCGAAGCGCTTCTCTGCTGGGCTGGGCTCTGCTGCCCTGGTGGTG
GCCGTGTCTGTTGGCTTACCCGAACGAAAGGATACGGTACATCCAGCTACTGCTGGCTCTCCCTGGAGG
GCGGCTGCTCTACGCTTTGTGGGCCCTGCAGCCGTCATTGTCTGGTGAACATGCTCATCGGAATCAT
CGTCTTCAACAAGCTCATGGCAGTGTGGCATCTCCGACAAATCCAAGAAGCAGAGGGCCGGTGGAG
CGGTGCCCTGGCCAGCCTGCTCCTCCCTGCTCAGCGTGTGGAGCGTCCCGAGCCCCCTGCTCAGCT
CAGCCTCGGCCAGGAACGCCATGGCCTCACTCTGGAGCTCTGCGTGGTGTGCCCTGCTGGCGCTCAC
CTGGATGTCTGCCGCTCTGGCTATGACAGACCCGCTTCCGCTCTTCCAGGCCCTTTTGTGTCTTC
AACTCCGCGCAGGGCTTTGTCACTGCTGTGCACTGCTTCTGCGCCAGAGGTCCAGGATGTGGTGA
AGTGCCAGATGGGGGTGTGCCGGCTGATGAGAGCGAAGACTCCCTGACTCGTGTAAAGAACGGGAGCT
GCAGATCCTGTCAGACTTTGAAAAGGATGTGGATCTGGCTTGTCAACAGTGTGTTCAAGGAGGTCAAC
ACTTGAACCCGTCCACCATCACGGGCACACTATCCCGCCTGTCCCTGGATGAGGATGAGGAGCCCAAGT
CCTGCCTCGTGGGCCCTGAGGGCAGCCTCAGCTTCTACCACTGCCTGGGAATATCCTGGTGGCCATGGC
AGCCTCACAGGGCTGGGGGAGCCTCCGCCCCACAGGAGGCCAACCCCTGTTTACATGTGTGGGAGGGT
GGCCTGCGGCAGCTGGACCTCACATGGCTGCGGCCACTGAGCCAGGCTCTGAGGGAGACTACATGGTGC
TGCCCCGGCGGACTTTGAGCCTGCAGCCTGGCGGTGGGGTGGAGGTGGTGGAGTGCCTCCAGGGCCCG
GCCGGAGGGGACCCCGCGAGCTGCCAAGACAGTGGCCACACTGAAGGCTACCCAGCTTCTGTCTCC
GTGGACCACTCGGCCTGGGGCTGGGCCCTGCCTATGGATCTCTCAGAATCCCTATGGAATGACCTTCC
AACCGCCACCGCGACACCCAGCGCCCGCAAGTCCCGAGCCAGGGGAGCGCAGCCGACCATGCCTCG
CACCGTGCCCGGCTTACCATGAAGATGGGCTCCCTGGAGCGAAAGAAATTACGGTATTACAGACCTGGAC
TTTGAGAAGGTGATGCACACCCGAAACGGCATTAGAACTCTACCAGGACTCAACCAGAAGTTCCACA
CTTTGACCGCTACCGCAGCCAGTCCACGGCCAAGAGGGAGAAGCGGTGGAGTGTGCTCGGGTGGGGC
AGCCGAGCGGAGCGTGTGACCGATAAGCCAGCCCTGGGGAGCGCCCGAGCTTGTCCCAACATCGGCGC
CATCAGAGCTGGAGCACCTTCAAATCTATGACACTGGGCTCGCTGCCCCCAAGCCCGAGAACGGCTGA
CTCTGCACCGGGCAGCAGCTGGGAGCCACAGAACCACCGGATGGTACTTCCAGACAGAGGTG

ACGCGTACGCGGCCGCTCGAGCAGAAACTCATCTCAGAAGAGGATCTGGCAGCAAATGATATCCTGGATT
ACAAGGATGACGACGATAAGGTTTAA

Protein Sequence: >RC224664 representing NM_001703
 Red=Cloning site Green=Tags(s)

MENTGWMGKGRMTPACPLLLSVILSLRLATAFDPAAPSACSALASGVL YGAFSLQDLFPTIASGCSWTLE
 NPDPTKYSL YLRFNRQEVC AHPAPRLPLDHYLVNFTCLRPSPEEAVAQA ESEVGRPEEEEEAEAAAGLE
 LCSGSGPFTFLHFDKNFVQLCLSAEPSEAPRLAPAALAFRFVEVLLINNNSSQFTCGVLCRWSEECGR
 AAGRACGFAQPGCSCPGEAGAGSTTTTSPGPPAHTLSNALVPGGPAPP AEA DLHSGSSNDLFTTEMRYG
 EEP EEPKVKTQWPRSADEPGLYMAQTGDPA AEEWSPWSVCSLTCGQGLQVRTRSCVSSPYGTLCSGPLR
 ETRPCNNSATCPVHG VWEWGSWSLCSRSCGRGSRMRMTCVPPQHGGKACEGPELQTKLCSMAACPVGE
 QWLEWGPWGPCSTSCANGTQQRSRKCSVAGPAWATCTGALTDRECSNLECPATDSKWPWNAWSLCSKT
 CDTGWQRFRMCQATGTQGYPCGTGEEVKPCSEKRCPAFHMC RDEYVMLMTWKAAAGEI IYNKCPN
 ASGSASRRCLLSAQGVAYWGLPSFARCISHEYRYLYLSLREHLAKQRMLAGEGMSQVVRSLQELLARRT
 YYSGDLLFSVDILRNVTDTFKRATYVPSADDVQRFFQVVSF MVDAENKEKWDDAQVSPGSVHLR VVED
 F IHLVGDALKAFQSSLIVTDNLVISIQREPVS AVSSDITFPMRGRRG MKDWVRHSEDRLFLPKEVLSLSS
 PGKPATSGAAGSPGRGRPGTVPPGPGHSHQRLLPADPDESSYFVIGAVLYRTLGLILPPPRPLAVTSR
 VMTVTVRPPTQPPAEPLITVELSYIINGTTDPHCASWDYSRADASSGDWDTENCQTLETQA AHTRCQCQH
 LSTFAVLAQPPKDLTLELAGSPSVPLVIGCAVSCMALLTLLAIYAAFWRFIKERSIILLNFCLSLASN
 ILILVQGSRVLSKGVCTMTAAFLHFFFLSSFCWVLTEAWQSYLAVIGMRTRLVKRFLCLGWGLPALVV
 AVS VGFTRTKGYGTSSYCWLSLEGLLYAFVGPAAVIVLVNMLIGIIVFNKLMARDGISDKSKKQRAGSE
 RCPWASLLLPSCACGAVPSPLLSSASARNAMASLWSSCVLPLLALTWMSAVLAMTDRRSVLFQALFAVF
 NSAQGFVITAVHCFLRREVDVVKCQMVCRADESESDSPDCKNGQLQILSDFEKDVLACQTVLFKEVN
 TCNPSTITGTL SRLSLDEDEE PKSCLVGPEGSLSF SPLPGNILVPMAASPGLGEP PPPQEANPVYMC GEG
 GLRQLDLTWLRPTEPGSEGDYMLPRRTL SLQPGGGGGGGEDAPRARPEGTPRRAAKTVAHTEGYPSFLS
 VDHSGLGLGPAYGSLQNPYGMTFQPPPTPSARQVPEP GERSRTPRTPVPGSTMKMSLERKRLRYSDLD
 FEKVMHTRKRHSELYHEL NQKFHTFDRYRSQSTAKREK RWSVSSGGAAERSVCTDKPSPGERPSLSQHRR
 HQSWSTFKSMTLGSLPPKPRERLTLHRAAAWEPT EPPDGFQTEV

TRTRPLEQKLISEEDLAANDILDYKDDDDKV

Chromatograms: https://cdn.origene.com/chromatograms/mk8007_f09.zip

Restriction Sites: Sgfl-MluI

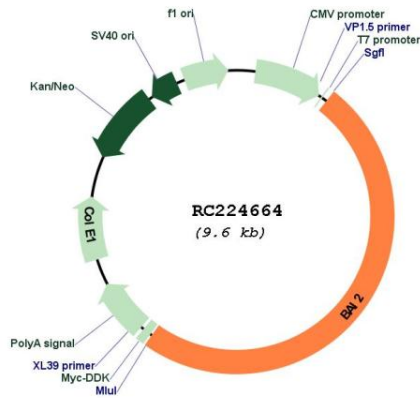
Cloning Scheme:



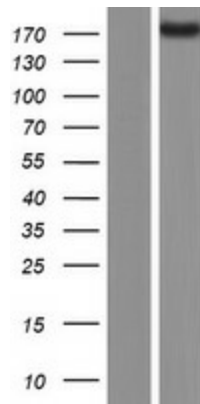
ACCN: NM_001703

ORF Size:	4755 bp
OTI Disclaimer:	The molecular sequence of this clone aligns with the gene accession number as a point of reference only. However, individual transcript sequences of the same gene can differ through naturally occurring variations (e.g. polymorphisms), each with its own valid existence. This clone is substantially in agreement with the reference, but a complete review of all prevailing variants is recommended prior to use. More info
OTI Annotation:	This clone was engineered to express the complete ORF with an expression tag. Expression varies depending on the nature of the gene.
Components:	The ORF clone is ion-exchange column purified and shipped in a 2D barcoded Matrix tube containing 10ug of transfection-ready, dried plasmid DNA (reconstitute with 100 ul of water).
Reconstitution Method:	<ol style="list-style-type: none">1. Centrifuge at 5,000xg for 5min.2. Carefully open the tube and add 100ul of sterile water to dissolve the DNA.3. Close the tube and incubate for 10 minutes at room temperature.4. Briefly vortex the tube and then do a quick spin (less than 5000xg) to concentrate the liquid at the bottom.5. Store the suspended plasmid at -20°C. The DNA is stable for at least one year from date of shipping when stored at -20°C.
RefSeq:	NM_001703.2 , NP_001694.2
RefSeq Size:	5434 bp
RefSeq ORF:	4758 bp
Locus ID:	576
Cytogenetics:	1p35.2
Protein Families:	Druggable Genome, Transmembrane
MW:	172.5 kDa
Gene Summary:	This gene encodes a a seven-span transmembrane protein that is thought to be a member of the secretin receptor family. The encoded protein is a brain-specific inhibitor of angiogenesis. The mature peptide may be further cleaved into additional products (PMID:20367554). Alternative splicing results in multiple transcript variants. [provided by RefSeq, Jun 2014]

Product images:



Circular map for RC224664



Western blot validation of overexpression lysate (Cat# [LY419803]) using anti-DDK antibody (Cat# [TA50011-100]). Left: Cell lysates from untransfected HEK293T cells; Right: Cell lysates from HEK293T cells transfected with RC224664 using transfection reagent MegaTran 2.0 (Cat# [TT210002]).