

Product datasheet for RC224662

DBX1 (NM_001029865) Human Tagged ORF Clone

Product data:

Product Type:	Expression Plasmids
Product Name:	DBX1 (NM_001029865) Human Tagged ORF Clone
Tag:	Myc-DDK
Symbol:	DBX1
Mammalian Cell Selection:	Neomycin
Vector:	pCMV6-Entry (PS100001)
E. coli Selection:	Kanamycin (25 ug/mL)
ORF Nucleotide Sequence:	>RC224662 representing NM_001029865 Red=Cloning site Blue=ORF Green=Tags(s)

TTTTGTAATACGACTCACTATAGGGCGGCCGGGAATTCGTCGACTGGATCCGGTACCGAGGAGATCTGCC
GCC**CGATCGCC**

ATGATGTTCCCCGGCCTCCTCGCGCCCCCGCCGGGTACCCTAGCCTCCTGCGGCCACGCCACCTTGA
CGCTGCCCCAGTCCTTGCAGTCGGCATTTCGGGCCACTCCAGCTTCTGGTGGAGGATCTGATCCGCAT
CAGCCGACCCCCGCCTACCTGCCCGCAGCGTGCCACCGCCAGCATGTCGCGCCACGGCAGGGGGCC
CCCACGGCCCTCACCGACACGGGGCCCTCGGACCTGGGCTCCCCGGTCCCAGCCAGCCGACGGGGCCCT
CTCCGGGACTGCCTTCTCCCCGCCAGGAGACGACGTTTCTGAAGTTTGGAGTGAACGCCATCCTCTC
CTCGGGGCCAGAACAGAAACATCCCCAGCCTTGCTCCAGAGCGTCCCTCCCAAGACCTTCGCCTTTCCC
TACTTCGAAGGGTCTTTTCAGCCTTTCATCAGATCTTCTTATTTCCAGCTTCTCCAGCGTGGTGCCCA
TCCCCGGGACCTTCTCCTGGCCGCTGGCCGCGCGGGAAGCCTCGGCGGGCATGCTGCGTCGAGCAGT
CTTCTCCGACGTGCAGCGGAAGGCGCTGGAGAAGATGTTCCAGAAGCAGAAGTACATCAGCAAGCCCGAC
CGCAAGAAGCTGGCGGCAAGCTGGGCTGAAAGACTCGCAGGACACAGCCCGAAGGACAGAGCCTGCAC
CCGACTCCACTCCCCGCCCGTGGTCCCCGGAGCCCTGATCTGACCTCTGCTTCTCCCTTCTTCTC
GCCGGCCGGGACATTCCAGGTGAAAATCTGGTTCCAGAACCGACGCATGAAATGGCGGAAGTCCAAGGAG
CGCGAAGTCTGTCTAGCGGGGGCTGTGCGGAGCAGACCTGCCACCAAGCTCAATCCGCACCCGGACC
TCAGCGAGTGGGCCAGAAAGGCCCTGGGAACGAAGAGGAGGAGGGCCCGGGCAGCCCCAGCCACCG
CCTGGCCTACCACGCGTCTCCGACCCCGACCTGCGGGACCCGCGGCTGCCAGGGCCGCTGCCCCCC
TCGCCCCGCACTCGAGCAGTCCCGGAAACCTTCGGACTTCTCAGATTCAGAGGAGGAAGAGGAGGGCG
AGGAACAGGAGGAAATCACCGTGTCC

AG**CGGACCG**ACGCGTACGCGCCGCTCGAGCAGAACTCATCTCAGAAGAGGATCTGGCAGCAAATGATATCC
TGGATTACAAGGATGACGACGATAAGGTTTAA



[View online »](#)

Protein Sequence: >RC224662 representing NM_001029865
Red=Cloning site Green=Tags(s)

MMFPGLLAPPAGYPSLLRPTTLTLPQSLQSAFSGHSSFLVEDLIRISRPPAYLPRSVPTASMSPPRQGA
 PTALTDTGASDLGSPGPGSRRGGSPTAFSPASETTFLKFGVNAILSSGPRTEETSPALLQSVPPKTFAFP
 YFEGSFQPFIRSSYFPASSVVPVPGTFSWPLAARGKPRRGLRRAVFSVQVRKALEKMFQKQKYISKPD
 RKKLAALKGLKDSQDARRTEPADSTPRPRASPGAPDLTSASPFSPAGTFQVKIWFQNRMRKWRNSKE
 RELLSSGGCREQLPTKLNPHPDLSVVGKQKPGNEEEEEEGPGSPSHRLAYHASSDPQHLRDPRLPGPLPP
 SPAHSSSPGKPSDFSDSEEEEEEGEEITVS

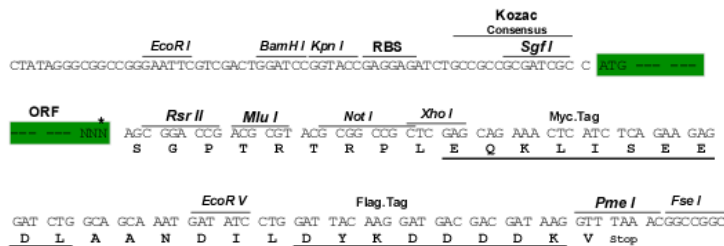
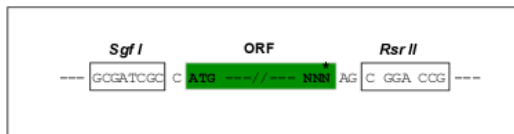
SGPTRTRPLEQKLISEEDLAANDILDYKDDDDKV

Chromatograms: https://cdn.origene.com/chromatograms/mk8045_d10.zip

Restriction Sites: SgfI-RsrII

Cloning Scheme:

Cloning sites used for ORF Shuttling:



* The last codon before the Stop codon of the ORF

ACCN: NM_001029865

ORF Size: 1146 bp

OTI Disclaimer: The molecular sequence of this clone aligns with the gene accession number as a point of reference only. However, individual transcript sequences of the same gene can differ through naturally occurring variations (e.g. polymorphisms), each with its own valid existence. This clone is substantially in agreement with the reference, but a complete review of all prevailing variants is recommended prior to use. [More info](#)

OTI Annotation: This clone was engineered to express the complete ORF with an expression tag. Expression varies depending on the nature of the gene.

Components: The ORF clone is ion-exchange column purified and shipped in a 2D barcoded Matrix tube containing 10ug of transfection-ready, dried plasmid DNA (reconstitute with 100 ul of water).

Reconstitution Method:

1. Centrifuge at 5,000xg for 5min.
2. Carefully open the tube and add 100ul of sterile water to dissolve the DNA.
3. Close the tube and incubate for 10 minutes at room temperature.
4. Briefly vortex the tube and then do a quick spin (less than 5000xg) to concentrate the liquid at the bottom.
5. Store the suspended plasmid at -20°C. The DNA is stable for at least one year from date of shipping when stored at -20°C.

RefSeq: [NM_001029865.1](#), [NP_001025036.1](#)

RefSeq Size: 1032 bp

RefSeq ORF: 1032 bp

Locus ID: 120237

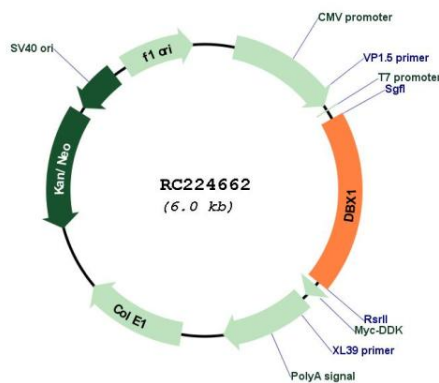
UniProt ID: [A6NMT0](#)

Cytogenetics: 11p15.1

MW: 41.3 kDa

Gene Summary: Could have a role in patterning the central nervous system during embryogenesis. Has a key role in regulating the distinct phenotypic features that distinguish two major classes of ventral interneurons, V0 and V1 neurons. Regulates the transcription factor profile, neurotransmitter phenotype, intraspinal migratory path and axonal trajectory of V0 neurons, features that differentiate them from an adjacent set of V1 neurons (By similarity).
[UniProtKB/Swiss-Prot Function]

Product images:



Circular map for RC224662