

## Product datasheet for **RC224661**

### WIPI2 (NM\_001033519) Human Tagged ORF Clone

#### Product data:

Product Type:	Expression Plasmids
Product Name:	WIPI2 (NM_001033519) Human Tagged ORF Clone
Tag:	Myc-DDK
Symbol:	WIPI2
Synonyms:	ATG18B; Atg21; CGI-50; IDDSSA; WIPI-2
Mammalian Cell Selection:	Neomycin
Vector:	pCMV6-Entry (PS100001)
E. coli Selection:	Kanamycin (25 ug/mL)



[View online »](#)

**ORF Nucleotide Sequence:**

>RC224661 representing NM\_001033519  
 Red=Cloning site Blue=ORF Green=Tags(s)

TTTTGTAATACGACTCACTATAGGGCGGCCGGGAATTCGTCGACTGGATCCGGTACCGAGGAGATCTGCC  
 GCC**CGGATCGCC**

ATGAACCTGGCGAGCCAGAGCGGGAGGCCGGCGCCGAGCTGCTCTTCGCCAACTTCAACCAGGACA  
 ACACGTCCCTAGCTGTTGGTAGTAAGTCCGGTTATAAATTTTCTCCCTTCTTCTGTGGATAAGCTGGA  
 ACAGATCTATGAATGCACCGATACGGAAGATGTGTGCATTGTAGAGAGATTGTTCTCCAGCAGCCTAGTG  
 GCCATCGTCAGCCTTAAAGCACCAAGGAAGCTAAAGGTTTGCCACTTTAAGAAGGGAAGTGAATCTGCA  
 ACTACAGCTACTCCAACACGATTCTGGGTGTGAAGCTCAACAGGCAGAGGCTGATAGTATGCCTGGAGGA  
 GTCCCTGTACATCCACAACATTCGGGACATGAAGGTGCTGCATACGATCAGGGAGACGCCTCAAACCTT  
 GCAGGCCGTGTGCGCTGTCAATCAACAACGACAACCTGCTACTTGGCGTACCCAGGGAGCGCACCATCG  
 GAGAGGTGCAAGTCTTCGATACCATAATTTGAGAGCTGCAAACATGATTCCGGCTCACGACGTCTTT  
 AGCGGCACTGGCCTTTGACGCAAGTGAACTAACTTGCACGGCTTCGGAGAAGGGGACCGTGATTAGG  
 GTATTTTCCATTCAGAAGGACAAAACTTTGAGTTTCGGAGAGGAGTAAAGAGGTGCGTGAGCATCT  
 GCTCCCTGGCCTTCAGCATGGACGGCATGTTCTCTCCGCTCCAGCAACACTGAGACCGTGACATCTT  
 CAAACTCGAGACTGTGAAAGAAAAACCCAGAGGAGCCACCACCTGGACCGGGTACTTCGGGAAAGTG  
 CTCATGGCCTCCACCAGCTACCTGCCTTCCAAGTGACAGAAATGTTCAACCAGGGCAGAGCCTTCGCCA  
 CGGTCCGCTGCCATTCTGCGGCCACAAAAACATCTGCTCGTAGCCACAATTCAGAAGATCCCGCGGT  
 GTTGGTGGGTGCCCGCAGCGGTACCTGTACATGTACAACCTGGACCCAGGAGGGCGGCGAGTGTGCC  
 CTGATGAAGCAGCACCGGCTGGACGGCAGTCTGGAACGACCAATGAGATCTTGGACTCTGCCTCTCAG  
 ACTGCCCTTAGTCACTCAGACATACGGCGCAGCTGCAGGAAAAGCCTACACAGACGACCTGGGTGCTGT  
 GGTGGCGCCTGCCTGGAGGACGAGGCCAGCCCTGCGCTGGATGAGGACAGCGAGCACCCGCCCATG  
 ATTCTTCGGACTGAC

**ACGCGT**ACGCGGCCGCTCGAGCAGAACTCATCTCAGAAGAGGATCTGGCAGCAAATGATATCCTGGATT  
 ACAAGGATGACGACGATAAGGTTTAA

**Protein Sequence:**

>RC224661 representing NM\_001033519  
 Red=Cloning site Green=Tags(s)

MNLSQSGEAGAGQLLFANFNQDNTSLAVGSKSGYKFFSLSSVDKLEQIYECTDTEDEVCIIVERLFSSSLV  
 AIVSLKAPRKLKVFHFKGTEICNYSYSNTILAVKLNQRQLIVCLEESLYIHNIRDMKVLHTIRETPNP  
 AGLCAL SINNDNCYLAYPGSATIGEVQVFDINLRAANMIPAHSPLAALAFDASGKLTASEKGTVIR  
 VFSIPEGQKLFERRGVKRCVSI CSLAFSMDGMFLSASSNTETVHIFKLETVKEKPEEPTTWTGYFGKV  
 LMASTSYLPSQVTEMFNQGRAFATVRLPFCGHKNICSLATI QKIPRLLVGAADGYLYMYNLDPQEGGECA  
 LMKQHRLDGSLETTNEILDSASHDCPLVTQTYGAAAGKAYTDDLGA VGGACLEDEASALRLDEDESEHPPM  
 ILRTD

**TR**TRPLEQKLISEEDLAANDILDYKDDDDKV

**Chromatograms:**

[https://cdn.origene.com/chromatograms/mk8059\\_a02.zip](https://cdn.origene.com/chromatograms/mk8059_a02.zip)

**Restriction Sites:**

SgfI-MluI

**Cloning Scheme:**


**ACCN:** NM\_001033519

**ORF Size:** 1275 bp

**OTI Disclaimer:** The molecular sequence of this clone aligns with the gene accession number as a point of reference only. However, individual transcript sequences of the same gene can differ through naturally occurring variations (e.g. polymorphisms), each with its own valid existence. This clone is substantially in agreement with the reference, but a complete review of all prevailing variants is recommended prior to use. [More info](#)

**OTI Annotation:** This clone was engineered to express the complete ORF with an expression tag. Expression varies depending on the nature of the gene.

**Components:** The ORF clone is ion-exchange column purified and shipped in a 2D barcoded Matrix tube containing 10ug of transfection-ready, dried plasmid DNA (reconstitute with 100 ul of water).

**Reconstitution Method:**

1. Centrifuge at 5,000xg for 5min.
2. Carefully open the tube and add 100ul of sterile water to dissolve the DNA.
3. Close the tube and incubate for 10 minutes at room temperature.
4. Briefly vortex the tube and then do a quick spin (less than 5000xg) to concentrate the liquid at the bottom.
5. Store the suspended plasmid at -20°C. The DNA is stable for at least one year from date of shipping when stored at -20°C.

**Note:** Plasmids are not sterile. For experiments where strict sterility is required, filtration with 0.22um filter is required.

**RefSeq:** [NM\\_001033519.2](#)

**RefSeq Size:** 4402 bp

**RefSeq ORF:** 1278 bp

**Locus ID:** 26100

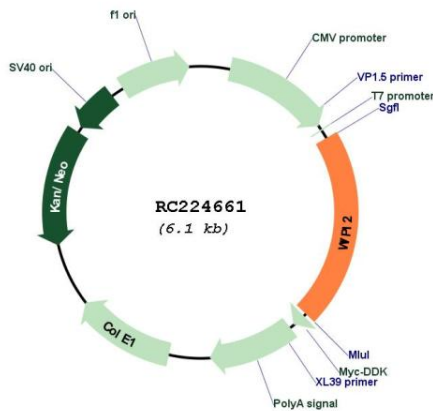
UniProt ID: [Q9Y4P8](#)

Cytogenetics: 7p22.1

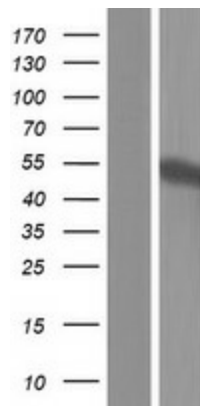
MW: 46.2 kDa

**Gene Summary:** WD40 repeat proteins are key components of many essential biologic functions. They regulate the assembly of multiprotein complexes by presenting a beta-propeller platform for simultaneous and reversible protein-protein interactions. Members of the WIPI subfamily of WD40 repeat proteins, such as WIPI2, have a 7-bladed propeller structure and contain a conserved motif for interaction with phospholipids (Proikas-Cezanne et al., 2004 [PubMed 15602573]).[supplied by OMIM, Mar 2008]

**Product images:**



Circular map for RC224661



Western blot validation of overexpression lysate (Cat# [LY422378]) using anti-DDK antibody (Cat# [TA50011-100]). Left: Cell lysates from untransfected HEK293T cells; Right: Cell lysates from HEK293T cells transfected with RC224661 using transfection reagent MegaTran 2.0 (Cat# [TT210002]).