

Product datasheet for **RC224658**

TMEM158 (NM_015444) Human Tagged ORF Clone

Product data:

Product Type:	Expression Plasmids
Product Name:	TMEM158 (NM_015444) Human Tagged ORF Clone
Tag:	Myc-DDK
Symbol:	TMEM158
Synonyms:	BBP; p40BBP; RIS1
Mammalian Cell Selection:	Neomycin
Vector:	pCMV6-Entry (PS100001)
E. coli Selection:	Kanamycin (25 ug/mL)
ORF Nucleotide Sequence:	>RC224658 representing NM_015444 Red=Cloning site Blue=ORF Green=Tags(s)

TTTGTGAATACGACTCACTATAGGGCGGCCGGAATTCGTCGACTGGATCCGGTACCGAGGAGATCTGCC
GCC**CGATCGCC**

ATGCTGCCCTGCTGCGCGCTCCTGGCCGCCGCTGCCGCTGCCGCCGTCCGCGGCGGGGCCGCGG
ACGCGCCCGGCTCCTCGGGGTGCCCTCCAATGCTTCAGTCAACGCGTCTCCGCGGACGAGCCCATCGC
CCCGCGGCTGCTGGCCTCGGCGGCCCCGGGCCCCCGAGCGCCCGGCGCGGAGGAGACGGCGCGGCA
GCGGCGCGTGAACATCAGCGTGCAGCGGCAGATGCTGAGCTCGCTGCTCGTGCCTGGGGCCGCCGC
GGGGCTTCCAGTGCAGCTACTGCTCTTCTCCACCAACGCGCACGGCCGCTTTCTTCGCCGCCGCTT
CCACCGCGTCGGGCCCGCTGCTCATCGAGCACCTGGGGCTGGCGGCGGCGGCGCGCAGCAGGACCTG
CGCTCTGCGTGGGTGCGGCTGGGTGCGCGGTGCGCGCACTGGCCGCTCCGGCCCGGCCGCCGCCCA
GCGCCGCCCGCCACC GCCGGGCGCCACC CGCTGCCAGCCTACCCGCGGCGGAGCCGCCGGGCC
GCTGTGGTGCAGGGCGAGCCGCTGCATTTCTGCTGCCTAGACTTCAGCCTGGAGGAGTGCAGGGCGAG
CCGGGCTGGCGGTGAACCGTAAGCCATTGAGTCCACGCTGGTGGCTGCTTCATGACCTGGTCATCG
TGGTGTGAGCGTGGCCGCCCTCATCTGGCCGGTGCCATCATCGCCGGCTTCTGCCCAACGGCATGGA
ACAGCGCCGACCAACGCCAGCACCACCGCAGCCACCCCGCCGAGTGGCCGAGGAGCAGCCAGCC
GCCGCCCGCCCGCTGCCGCCGCCGCCGCGCGCTCACTTCGGGGGTGGCGACCAAG

AG**CGGACCG**ACGCGTACGCGGCCGCTCGAGCAGAACTCATCTCAGAAGAGGATCTGGCAGCAAATGATATCC
TGGATTACAAGGATGACGACGATAAGGTTAA



[View online »](#)

Protein Sequence: >RC224658 representing NM_015444
 Red=Cloning site Green=Tags(s)

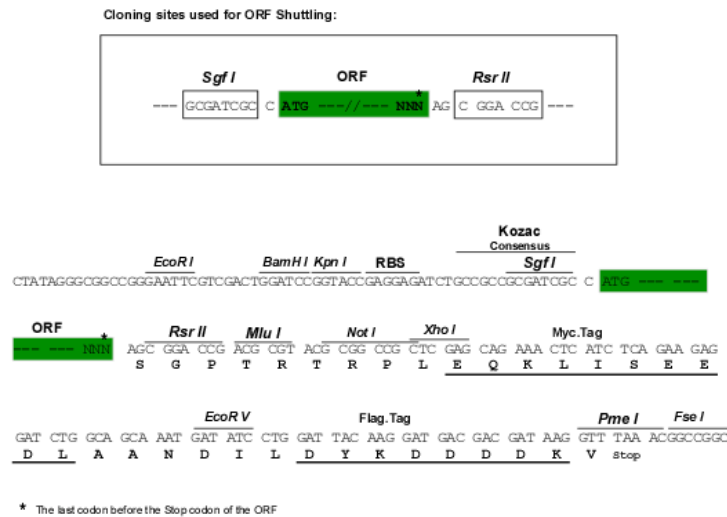
MLPLLAALLAAACPLPPVRGGAADAPGLLGVPASNASNASSADEPIAPRLLASAAGPPPERPGPEETAAA
 AAPCNISVQRQMLSSLLVRWGRPRGFQCDLLFSTNAHGRAFFAAAFHRVGPPLLIEHLGLAAGGAQDDL
 RLCVCGGWVRGRRTGRLRPAAPSAATAAGAPTALPAYPAAEPPGPLWLQGEPLHFCCLDFSLEELQGE
 PGWRLNRKPIESTLVACFMTLVIVVWSVAALIWVPVPIIAGFLPNGMEQRRTTASTTAATPAAVPAGTTAA
 AAAAAAAAAAAVTSGVATK

SGPTRTRPLEQKLISEEDLAANDILDYKDDDDKV

Chromatograms: https://cdn.origene.com/chromatograms/mg4958_a09.zip

Restriction Sites: SgfI-RsrII

Cloning Scheme:



ACCN: NM_015444

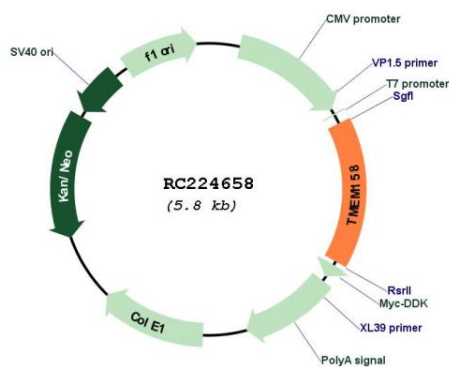
ORF Size: 900 bp

OTI Disclaimer: Due to the inherent nature of this plasmid, standard methods to replicate additional amounts of DNA in E. coli are highly likely to result in mutations and/or rearrangements. Therefore, OriGene does not guarantee the capability to replicate this plasmid DNA. Additional amounts of DNA can be purchased from OriGene with batch-specific, full-sequence verification at a reduced cost. Please contact our customer care team at custsupport@origene.com or by calling 301.340.3188 option 3 for pricing and delivery.

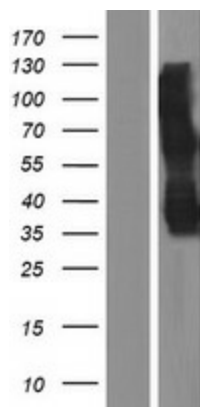
The molecular sequence of this clone aligns with the gene accession number as a point of reference only. However, individual transcript sequences of the same gene can differ through naturally occurring variations (e.g. polymorphisms), each with its own valid existence. This clone is substantially in agreement with the reference, but a complete review of all prevailing variants is recommended prior to use. [More info](#)

OTI Annotation:	This clone was engineered to express the complete ORF with an expression tag. Expression varies depending on the nature of the gene.
Components:	The ORF clone is ion-exchange column purified and shipped in a 2D barcoded Matrix tube containing 10ug of transfection-ready, dried plasmid DNA (reconstitute with 100 ul of water).
Reconstitution Method:	<ol style="list-style-type: none"> 1. Centrifuge at 5,000xg for 5min. 2. Carefully open the tube and add 100ul of sterile water to dissolve the DNA. 3. Close the tube and incubate for 10 minutes at room temperature. 4. Briefly vortex the tube and then do a quick spin (less than 5000xg) to concentrate the liquid at the bottom. 5. Store the suspended plasmid at -20°C. The DNA is stable for at least one year from date of shipping when stored at -20°C.
Note:	Plasmids are not sterile. For experiments where strict sterility is required, filtration with 0.22um filter is required.
RefSeq:	<u>NM_015444.1, NP_056259.1</u>
RefSeq Size:	1797 bp
RefSeq ORF:	903 bp
Locus ID:	25907
UniProt ID:	<u>Q8WZ71</u>
Cytogenetics:	3p21.31
Protein Families:	Druggable Genome
MW:	30.4 kDa
Gene Summary:	Constitutive activation of the Ras pathway triggers an irreversible proliferation arrest reminiscent of replicative senescence. Transcription of this gene is upregulated in response to activation of the Ras pathway, but not under other conditions that induce senescence. The encoded protein is similar to a rat cell surface receptor proposed to function in a neuronal survival pathway. An allelic polymorphism in this gene results in both functional and non-functional (frameshifted) alleles; the reference genome represents the functional allele. [provided by RefSeq, Jul 2015]

Product images:



Circular map for RC224658



Western blot validation of overexpression lysate (Cat# [LY414544]) using anti-DDK antibody (Cat# [TA50011-100]). Left: Cell lysates from untransfected HEK293T cells; Right: Cell lysates from HEK293T cells transfected with RC224658 using transfection reagent MegaTran 2.0 (Cat# [TT210002]).