

Product datasheet for **RC224656**

SORBS1 (NM_006434) Human Tagged ORF Clone

Product data:

Product Type:	Expression Plasmids
Product Name:	SORBS1 (NM_006434) Human Tagged ORF Clone
Tag:	Myc-DDK
Symbol:	SORBS1
Synonyms:	CAP; FLAF2; R85FL; SH3D5; SH3P12; SORB1
Mammalian Cell Selection:	Neomycin
Vector:	pCMV6-Entry (PS100001)
E. coli Selection:	Kanamycin (25 ug/mL)



[View online »](#)

ORF Nucleotide Sequence:

>RC224656 representing NM_006434
 Red=Cloning site Blue=ORF Green=Tags(s)

TTTTGTAATACGACTCACTATAGGGCGGCCGGAATTCGTCGACTGGATCCGGTACCGAGGAGATCTGCC
 GCC**CGGATCGCC**

ATGAGTTCGAATGTGATGGTGGTTCCAAAGCTGTGATGAATGGCTTGGCACCTGGCAGCAATGGGCAAG
 ACAAAGACATGGATCCTACAAAAATCTGCACTGGGAAGGAGCGGTGACTCTCCGGCCTCGTCTTCTTA
 CAGGGAACCCCAAGCAGTAGCCCTGCGAGCCCTCAGGAAACCCGGCAACACGAAAGCAAACCAGATGAG
 TGGAGGCTTTCTCCAGTGTGATGCCAATGGAATGCCAGCCCTTTCACTCGCTGCCAAGGGCTACA
 GAAGTGTGCATCCCAACCTTCTTCTGACAAGTCCAGGATTCCAGTCTCTACTAAATGAAGTTTCTTC
 TTCCCTTATTGGAAGTATTCCCAAGCCTTTCCATCAGTTAGCAAGCCTTCATCCGCCTATCCCTCCACA
 ACGATTGTCAATCCTACTATTGTGCTCTTGCAACACAATCGAGAACAGCAAAAACGACTCAGTAGCCTTT
 CAGATCCTGTCTCAGAAAGAAGAGTGGGAGAGCAGGACTCAGACCAACCCAGGAAAAACCCACCTCACC
 TGGCAAGGCTATTGAAAAAGAGCAAAGGATGACAGTAGCGGGTGGTGAAGAGCACTCAGGACTTAAGC
 GATGTTTTCCATGGATGAAGTGGGATCCCACTCCGGAACACTGAGAGATCAAAGACTGGTACAAGACTA
 TGTTTAAACAGATCCACAAACTGAACAGAGATGATGATTCAGATCTGTACTCTCCAGATACTCATTTC
 TGAAGACACAAAATCTCCCTTTCTGTGCCTCGCTCAAAAAGTGAGATGAGCTACATTGATGGTGAAG
 GTAGTCAAGAGGTCCGCCACACTACCCCTCCAGCCCGCTCTTCTCACTGAAGTCAAGCTCAGAAAGAA
 ATGACTGGGAACCCCAAGATAAGAAAGTAGACACAAGAAAATATCGTGCAGAGCCCAAGAGCATTACGA
 ATATCAGCCTGGCAAGTCTTCCGTTCTGACCAACGAAAAGATGAGCTCAGCCATCAGCCCTACTCCGGAA
 ATTTCTTCAGAGACTCCTGGATATATATTCTTCCAACCTCCATGCAGTGAAGAGGGAATCAGACGGGG
 CTCCTGGGGATCTCACTAGCTTGGAGAATGAGAGACAAAATTTATAAAAGTGTCTTGAAGTGGTGACAT
 CCCTCTTCAGGGCTGAGTGGGCTCAAGCGACCATCCAGCTCTGCTTCCACTAAAGATTCAGAATCGCCA
 AGACATTTTATACCAGCTGATTACTTGAATCCACGGAAGAATTTATTGGAAGAGCTCATGATGATAAAG
 AGATGAGACCTGCCAGAGCCAAATTTGACTTTAAAGCTCAGACACTAAAGGAGCTTCTCTGCAGAAGGG
 AGATATTGTTTACATTTAAGCAAATGATCAGAAGTGGTATGAAGGAGAACACCACGGCCGGGTGGGA
 ATCTTCCACGCACCTACATCGAGCTTCTTCTCCTGCTGAGAAGGCACAGCCAAAAAGTTGACACCAG
 TGCAGGTTTTGGAATATGGAGAAGCTATTGCTAAGTTAACTTTAATGGTATACACAAGTAGAAATGTC
 CTTCAGAAAGGGTGAGAGGATCACACTGCTCCGGCAGGTAGATGAGAAGTGGTACGAAGGGAGGATCCCG
 GGGACATCCCACAGGCATCTTCCCATCACCTACGTGGATGTGATCAAGCGACCACTGGTAAAAACC
 CTGTGGATTACATGGACCTGCCTTTCTCCTCCTCCCAAGTCGCAGTGCCACTGCAAGCCCACAGCAACC
 TCAAGCCCAGCAGCAAGAGTCACCCCCGACAGGAGTCAAACCTCACAAGATTTATTTAGCTATCAAGCA
 TTATATAGCTATATACCACAGAATGATGATGAGTTGGAATCCGCGATGGAGATATCGTTGATGTCATGG
 AAAAATGTGACGATGGATGGTTTGGTACTTCAAGAAGGACAAAGCAGTTTGGTACTTTTCCAGGCAA
 CTATGTAAAACCTTTGTATCTA

ACGCGTACGCGGCCGCTCGAGCAGAACTCATCTCAGAAGAGGATCTGGCAGCAATGATATCCTGGATT
 ACAAGGATGACGACGATAAGGTTTAA

Protein Sequence: >RC224656 representing NM_006434
Red=Cloning site Green=Tags(s)

MSSECDGGSKAVMNGLAPGSNGQDKMDPTKICTGKGAVTLRASSYRETPTSSSPASPQETRQHESKPDE
 WRLSSSADANGNAQPSSLAAGYRSVHPNLP SDKSQDSSPLLNEVSSSLIGTDSQAFPSVKPSSAYPST
 TIVNPTIVLLQHNREQKRLSSLSDPVSERRVGEQDSAPTQEKPTSPGKAIEKRAKDDSRRVVKSTQDLS
 DVSMDEVGIPLRNTERSKDWYKTMFKQIHKLNRRDDSDLYSPRYSFSEDTKSPLSVPRSKSEMSYIDGK
 VVKRSATLPLPARSSSLKSSSERNDWEPPDKKVDTRKYRAEPKSIYEYQPGKSSVLTNEKMSSAISPTPE
 ISSETPGYIYSSNFHAVKRES DGAPGDLTSLENERQIYKSVLEGGDIPLQGLSGLKRPSSSASTKDS
 RHFIPADYLESTEEFIRRRHDDKEMRPARAKFDFAQTLKELPLQKGDIVYIYKQIDQNWYEGEHHGRVG
 IFPRTYIELLPPAEKAQPKLTPVQVLEYGEIAKFNFGDTQVEMFRKGERITLLRQVDENWYEGRIP
 GTSRQGIFFITYVDVIKRPVKNPVDYMDLPFSSSPRSATASPQQPQAQRRVTPDRSQTSDLF SYQA
 LYSYIPQNDELELRDGDIVDMKEDDGFVGT SRRTKQFGTFPGNYVKPLYL

TRTRPLEQKLISEEDLAANDILDYKDDDDKV

Chromatograms: https://cdn.origene.com/chromatograms/mk8072_h02.zip

Restriction Sites: SgfI-MluI

Cloning Scheme:



ACCN: NM_006434

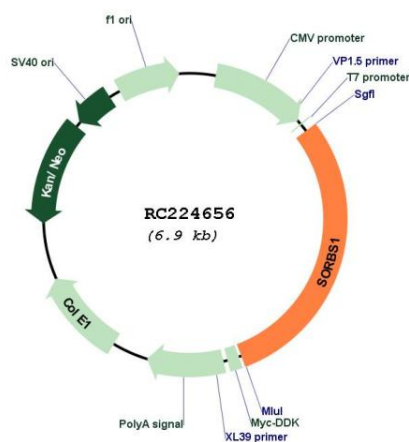
ORF Size: 2052 bp

OTI Disclaimer: The molecular sequence of this clone aligns with the gene accession number as a point of reference only. However, individual transcript sequences of the same gene can differ through naturally occurring variations (e.g. polymorphisms), each with its own valid existence. This clone is substantially in agreement with the reference, but a complete review of all prevailing variants is recommended prior to use. [More info](#)

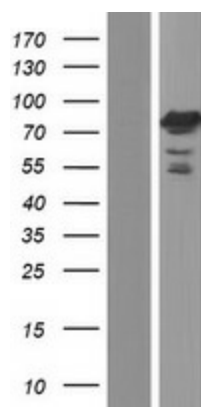
OTI Annotation: This clone was engineered to express the complete ORF with an expression tag. Expression varies depending on the nature of the gene.

Components:	The ORF clone is ion-exchange column purified and shipped in a 2D barcoded Matrix tube containing 10ug of transfection-ready, dried plasmid DNA (reconstitute with 100 ul of water).
Reconstitution Method:	<ol style="list-style-type: none"> 1. Centrifuge at 5,000xg for 5min. 2. Carefully open the tube and add 100ul of sterile water to dissolve the DNA. 3. Close the tube and incubate for 10 minutes at room temperature. 4. Briefly vortex the tube and then do a quick spin (less than 5000xg) to concentrate the liquid at the bottom. 5. Store the suspended plasmid at -20°C. The DNA is stable for at least one year from date of shipping when stored at -20°C.
RefSeq:	<u>NM_006434.2</u> , <u>NP_006425.2</u>
RefSeq Size:	5402 bp
RefSeq ORF:	2055 bp
Locus ID:	10580
UniProt ID:	<u>Q9BX66</u>
Cytogenetics:	10q24.1
Domains:	SH3, Sorb
Protein Families:	Druggable Genome
Protein Pathways:	Adherens junction, Insulin signaling pathway, PPAR signaling pathway
MW:	76.4 kDa
Gene Summary:	This gene encodes a CBL-associated protein which functions in the signaling and stimulation of insulin. Mutations in this gene may be associated with human disorders of insulin resistance. Alternative splicing results in multiple transcript variants. [provided by RefSeq, Mar 2014]

Product images:



Circular map for RC224656



Western blot validation of overexpression lysate (Cat# [LY416648]) using anti-DDK antibody (Cat# [TA50011-100]). Left: Cell lysates from untransfected HEK293T cells; Right: Cell lysates from HEK293T cells transfected with RC224656 using transfection reagent MegaTran 2.0 (Cat# [TT210002]).