

Product datasheet for **RC224653**

Apc11 (ANAPC11) (NM_001002246) Human Tagged ORF Clone

Product data:

Product Type: Expression Plasmids
Product Name: Apc11 (ANAPC11) (NM_001002246) Human Tagged ORF Clone
Tag: Myc-DDK
Symbol: Apc11
Synonyms: APC11; Apc11p; HSPC214
Mammalian Cell Selection: Neomycin
Vector: pCMV6-Entry (PS100001)
E. coli Selection: Kanamycin (25 ug/mL)
ORF Nucleotide Sequence: >RC224653 ORF sequence
Red=Cloning site Blue=ORF Green=Tags(s)

TTTTGTAATACGACTCACTATAGGGCGCCGGAATTCGTCGACTGGATCCGGTACCGAGGAGATCTGCC
GCC**CGATCGCC**

RCATGAAGGTGAAGATTAAGTGCTGGAACGGCGTGGCCACTTGGCTCTGGGTGGCCAACGATGAGAACTG
TGGCATCTGCAGGATGGCATTAAACGGATGCTGCCCTGACTGCAAGGTGCCGGCGACGACTGCCCGCTG
GTGTGGGGCCAGTGCTCCACTGCTTCCACATGCATTGCATCCTCAAGTGGCTGCACGCACAGCAGGTGC
AGCAGCACTGCCCATGTGCCCGCAGGAATGGAAGTTCAAGGAG

ACGCGTACGCGGCCGCTCGAGCAGAAACTCATCTCAGAAGAGGATCTGGCAGCAAATGATATCCTGGATT
ACAAGGATGACGACGATAAGGTTTAA

Protein Sequence: >RC224653 protein sequence
Red=Cloning site Green=Tags(s)

X*R*RLSAGTAWPLGSGWPTMRTVASAGWHLTDAALTARCPATTARWCGASAPTASTCIASSGCTHSRC
SSTAPCAARNGSSR

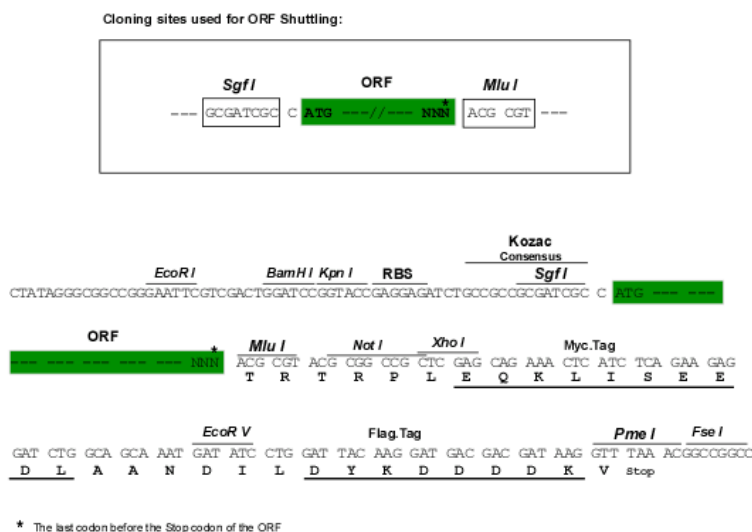
TRTRPLEQKLISEEDLAANDILDYKDDDDKV

Chromatograms: https://cdn.origene.com/chromatograms/mk6486_c01.zip

Restriction Sites: Sgfl-MluI



[View online »](#)

Cloning Scheme:


ACCN: NM_001002246

ORF Size: 252 bp

OTI Disclaimer: The molecular sequence of this clone aligns with the gene accession number as a point of reference only. However, individual transcript sequences of the same gene can differ through naturally occurring variations (e.g. polymorphisms), each with its own valid existence. This clone is substantially in agreement with the reference, but a complete review of all prevailing variants is recommended prior to use. [More info](#)

OTI Annotation: This clone was engineered to express the complete ORF with an expression tag. Expression varies depending on the nature of the gene.

Components: The ORF clone is ion-exchange column purified and shipped in a 2D barcoded Matrix tube containing 10ug of transfection-ready, dried plasmid DNA (reconstitute with 100 ul of water).

Reconstitution Method:

1. Centrifuge at 5,000xg for 5min.
2. Carefully open the tube and add 100ul of sterile water to dissolve the DNA.
3. Close the tube and incubate for 10 minutes at room temperature.
4. Briefly vortex the tube and then do a quick spin (less than 5000xg) to concentrate the liquid at the bottom.
5. Store the suspended plasmid at -20°C. The DNA is stable for at least one year from date of shipping when stored at -20°C.

RefSeq: [NM_001002246.2](#)

RefSeq Size: 918 bp

RefSeq ORF: 255 bp

Locus ID: 51529

UniProt ID: [Q9NYG5](#)

Cytogenetics: 17q25.3

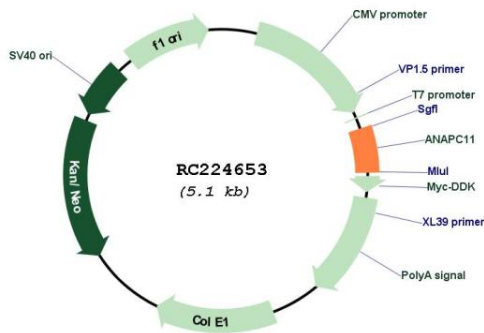
Protein Families: Druggable Genome

Protein Pathways: Cell cycle, Oocyte meiosis, Progesterone-mediated oocyte maturation, Ubiquitin mediated proteolysis

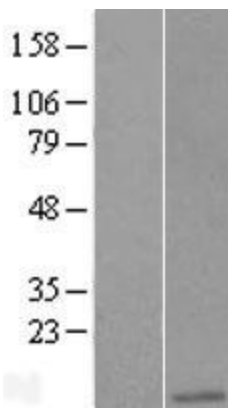
MW: 9.8 kDa

Gene Summary: Together with the cullin protein ANAPC2, constitutes the catalytic component of the anaphase promoting complex/cyclosome (APC/C), a cell cycle-regulated E3 ubiquitin ligase that controls progression through mitosis and the G1 phase of the cell cycle. The APC/C complex acts by mediating ubiquitination and subsequent degradation of target proteins: it mainly mediates the formation of 'Lys-11'-linked polyubiquitin chains and, to a lower extent, the formation of 'Lys-48'- and 'Lys-63'-linked polyubiquitin chains. May recruit the E2 ubiquitin-conjugating enzymes to the complex.[UniProtKB/Swiss-Prot Function]

Product images:



Circular map for RC224653



Western blot validation of overexpression lysate (Cat# [LY424186]) using anti-DDK antibody (Cat# [TA50011-100]). Left: Cell lysates from untransfected HEK293T cells; Right: Cell lysates from HEK293T cells transfected with [RC224701] using transfection reagent MegaTran 2.0 (Cat# [TT210002]).