

## Product datasheet for **RC224651**

### COPE (NM\_199444) Human Tagged ORF Clone

#### Product data:

**Product Type:** Expression Plasmids  
**Product Name:** COPE (NM\_199444) Human Tagged ORF Clone  
**Tag:** Myc-DDK  
**Symbol:** COPE  
**Synonyms:** epsilon-COP  
**Mammalian Cell Selection:** Neomycin  
**Vector:** pCMV6-Entry (PS100001)  
**E. coli Selection:** Kanamycin (25 ug/mL)  
**ORF Nucleotide Sequence:** >RC224651 representing NM\_199444  
**Red=Cloning site Blue=ORF Green=Tags(s)**

TTTTGTAATACGACTCACTATAGGGCGGCCGGAATTCGTCGACTGGATCCGGTACCGAGGAGATCTGCC  
GCC**CGATCGCC**

ATGGCGCCTCCGGCCCCGGCCCGCCTCCGGCGGCTCCGGGGAGGTAGACGAGCTGTTTCGACGTAAGA  
ACGCCTTCTACATCGGCAGCTACCAGCAGTGCATAAACGAGGCGCAGCGGGTGAAGCTATCAAGCCCAGA  
GAGAGACGTGGAGAGGGACGTCTCCTGTATAGAGCGTACCTGGCGCAGAGGAAGTTCGGTGTGGTCCTG  
GATGAGATCAAGCCCTCCTCGGCCCTGAGCTCCAGGCCGTGCGCATGTTTGCTGACTACCTCGCCCAGC  
AGAGTCGGAGGGACAGCATCGTGGCCGAGCTGGACCGAGAGATGAGCAGGAGCGTGGACGTGACCAACAC  
CACCTTCCTGCTCATGGCCGCCTCCATCTATCTCCACGACCAGAACC CGGATGCCGCCCTGCGTGGCGCTG  
CACCAGGGGGACAGCCTGGAGTGCACAGCCATGACAGTGCAGATCCTGCTGAAGCTGGACCGCCTGGACC  
TCGCCCCGAAGGAGCTGAAGAGAATGCAGGACCTGGACGAGGATGCCACCCTCACCCAGCTCGCCACTGC  
CTGGGTACGCCTGGCCACGGATAGTGGCTACCCAGAGACGCTGGTCAACCTCATCGTCTGTCCCAGCAC  
CTGGGCAAGCCCCCTGAGGTGACAAACCGATACCTGTCCCAGCTGAAGGATGCCACAGGTCCCATCCCT  
TCATCAAGGAGTACCAGGCCAAGGAGAACGACTTTGACAGGCTGGTGCTACAGTACGCTCCCAGCGCC

**ACGCGT**ACGCGGCCGCTCGAGCAGAACTCATCTCAGAAGAGGATCTGGCAGCAAATGATATCCTGGATT  
ACAAGGATGACGACGATAAGGTTTAA



[View online »](#)

**Protein Sequence:** >RC224651 representing NM\_199444  
Red=Cloning site Green=Tags(s)

MAPPAPGPASGGSGEVDLFDVKNFYIGSYQQCINEAQRVKLSSPERDVERDVFLYRAYLAQRKFGVVL  
 DEIKPSSAPELQAVRMFADYLAHESRRDSIVAELDREMSRSVDVNTTFFLLMAASIYLDQNPDAALRAL  
 HQGDSLECTAMTVQILLKLDRLDLARKELKRMQDLDEDATLTQLATAWVSLATDSGYPETLVNLIIVLSQH  
 LGKPPEVTNRYLSQLKDAHRSHPF IKEYQAKENDFDRLLVLYQYAPSA

TRTRPLEQKLISEEDLAANDILDYKDDDDKV

**Chromatograms:** [https://cdn.origene.com/chromatograms/ja1467\\_a02.zip](https://cdn.origene.com/chromatograms/ja1467_a02.zip)

**Restriction Sites:** SgfI-MluI

**Cloning Scheme:**

Cloning sites used for ORF Shuttling:



\* The last codon before the Stop codon of the ORF

**ACCN:** NM\_199444

**ORF Size:** 768 bp

**OTI Disclaimer:** The molecular sequence of this clone aligns with the gene accession number as a point of reference only. However, individual transcript sequences of the same gene can differ through naturally occurring variations (e.g. polymorphisms), each with its own valid existence. This clone is substantially in agreement with the reference, but a complete review of all prevailing variants is recommended prior to use. [More info](#)

**OTI Annotation:** This clone was engineered to express the complete ORF with an expression tag. Expression varies depending on the nature of the gene.

**Components:** The ORF clone is ion-exchange column purified and shipped in a 2D barcoded Matrix tube containing 10ug of transfection-ready, dried plasmid DNA (reconstitute with 100 ul of water).

**Reconstitution Method:**

1. Centrifuge at 5,000xg for 5min.
2. Carefully open the tube and add 100ul of sterile water to dissolve the DNA.
3. Close the tube and incubate for 10 minutes at room temperature.
4. Briefly vortex the tube and then do a quick spin (less than 5000xg) to concentrate the liquid at the bottom.
5. Store the suspended plasmid at -20°C. The DNA is stable for at least one year from date of shipping when stored at -20°C.

**RefSeq:** [NM\\_199444.2](#)

**RefSeq Size:** 978 bp

**RefSeq ORF:** 771 bp

**Locus ID:** 11316

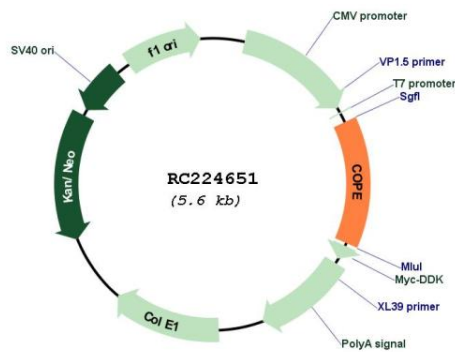
**UniProt ID:** [O14579](#)

**Cytogenetics:** 19p13.11

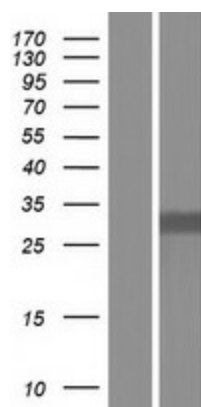
**MW:** 28.6 kDa

**Gene Summary:** The product of this gene is an epsilon subunit of coatomer protein complex. Coatomer is a cytosolic protein complex that binds to dilysine motifs and reversibly associates with Golgi non-clathrin-coated vesicles. It is required for budding from Golgi membranes, and is essential for the retrograde Golgi-to-ER transport of dilysine-tagged proteins. Coatomer complex consists of at least the alpha, beta, beta', gamma, delta, epsilon and zeta subunits. Alternatively spliced transcript variants encoding different isoforms have been identified. [provided by RefSeq, Jul 2008]

**Product images:**



Circular map for RC224651



Western blot validation of overexpression lysate (Cat# [LY404568]) using anti-DDK antibody (Cat# [TA50011-100]). Left: Cell lysates from untransfected HEK293T cells; Right: Cell lysates from HEK293T cells transfected with RC224651 using transfection reagent MegaTran 2.0 (Cat# [TT210002]).