

Product datasheet for RC224639

CLTCL1 (NM_007098) Human Tagged ORF Clone

Product data:

Product Type:	Expression Plasmids
Product Name:	CLTCL1 (NM_007098) Human Tagged ORF Clone
Tag:	Myc-DDK
Symbol:	CLTCL1
Synonyms:	CHC22; CLH22; CLTCL; CLTD
Mammalian Cell Selection:	Neomycin
Vector:	pCMV6-Entry (PS100001)
E. coli Selection:	Kanamycin (25 ug/mL)
ORF Nucleotide Sequence:	>RC224639 representing NM_007098 Red=Cloning site Blue=ORF Green=Tags(s)

TTTTGTAATACGACTCACTATAGGGCGGCCGGAATTCGTCGACTGGATCCGGTACCGAGGAGATCTGCC
GCC**CGATCGCC**

ATGGCGCAGATCCTCCCTGTTTCGCTTTCCAGGAGCACTTCCAGCTCCAAAACCTTGAATTAATCCAGCTA
ACATTGGATTGACACACTGACCATGGAATCTGACAAGTTCATATGTATCCGAGAGAAAGTTGGTGAGCA
GGCACAGGTCACGATCATTGACATGAGTGACCAATGGCTCCGATCCGACGGCCTATCTCTGCAGAGAGT
GCCATCATGAATCCAGCCTCTAAGGTGATAGCTCTGAAAGCTGGGAAGACACTTCAGATCTTTAATATTG
AGATGAAGAGTAAAATGAAGGCTCATACTATGGCAGAAGAAGTGATTTTCTGGAAATGGGTTTCTGTGAA
CACTGTTGCCTTGGTGACCGAGACCGCGGTCTACCACTGGAGCATGGAAGGTGACTCCAGCCCATGAAG
ATGTTTGTAGACATACCACTGCTGGTGGCTGCCAGGTGATTCCTACCGACTGATGAGTACCAGAAGT
GGCTGCTGCTCGTAGGCATCTCGGCTCAGCAAAACCGTGTGGTTGGAGCAATGCAGCTCTACTCTGTGGA
TAGGAAGGTTTCAACAACCATAGAAGGCCATGCTGCGGCTTTTGCAGAGTTCAAGATGGAGGGGAATGCC
AAGCCTGCCACCCTTTTCTGCTTTGCTGTACGTAATCCCACAGGAGGCAAGTTGCACATCATTGAAGTTG
GACAGCCTGCAGCGGAAACCAACCTTTTGTAAAGAAAGCAGTAGATGTGTTTTTCTCCAGAGGCACA
GAATGATTTTCCAGTGGCTATGCAGATTGGAGCTAAACATGGTGTATTTACTTGATCACAAAGTATGCC
TATCTTCATCTGTACGACCTAGAGTCTGGCGTGTGCATCTGCAACCGTATTAGTGTGACACAATAT
TTGTCACTGCTCCACACAAACCAACCTCTGGAATTATTGGTGTCAACAAAAGGGACAGGTACTGTCAGT
TTGTGTTGAGGAAGATAACATTGTGAATTATGCAACCAACGTGCTTCAGAATCCAGACCTTGGTCTGCGT
TTGGCCGTTCTGAGTAACCTGGCTGGGGCAGAGAAGTTGTTTGTGAGAAAATTCATACCCTCTTTGCAC
AGGGCAGCTATGCTGAAGCCGCCAAAGTTGCAGCGTCTGCACCAAGGGAATCCTGCGTACCAGAGAGAC
GGTCCAGAAAATCCAGAGTATACCCGCTCAGTCTGGCCAGGCTTCTCCATTGCTGCAGTACTTCGGAATC
CTGCTCGACCAGGTCAGCTCAATAAATCTGAATCCTTAGAATTTGCCATCTGGTTCTTCAGCAGGGGC
GTAAGCAACTCCTAGAGAAGTGGCTGAAAGAAGATAAGCTGGAGTCTCAGAGGAGCTCGGAGACTTGGT
CAAAACCACTGACCCATGCTCGCTCTGAGTGTGTACCTCGGGCAAATGTGCCAAGCAAAGTATCCAG



[View online »](#)

TGTTTTGCAGAAACAGGCCAATTCCAGAAAATTGTGCTCTATGCCAAAAAGGTTGGGTACACCCAGACT
 GGATCTTTCTGCTGAGGGGTGAATGAAGATCAGTCCGGAACAGGGCCTGCAGTTTTCTCGAATGCTAGT
 GCAGGACGAGGAGCCGCTGGCCAACATTAGCCAGATTGTGGACATTTTCATGGAAAAAGTTAATTCAG
 CAGTGTACTTCTTTCTTATTGGATGCCTTGAAGAATAATCGCCAGCTGAGGGACTCCTGCAGACATGGC
 TGTTGGAGATGAACCTTGTTCATGCACCCAGGTTGCAGATGCCATCCTTGAAAAATAAATGTTTACTCA
 TTACGACCGGGCCACATTGCCAGCTCTGTGAGAAGGCAGGCCCTCCTGCAGCAAGCAGCTGGAGCACTAC
 ACCGACCTCTATGACATCAAGAGGGCTGTGGTCCACACTCACCTCCTCAATCCCGAGTGGCTTGTCAATT
 TCTTTGGCTCCTTATCGGTGGAGATTCTGTGGAGTGTCTGCATGCCATGCTGTCTGCTAACATCAGACA
 GAACCTTCAGCTGTGTGTCAGGTGGCCTCTAAGTACCACGAGCAGCTGGGCACGAGGCCCTGGTGGAG
 CTCTTTGAATCCTTCAAGAGTTACAAAGGCCTTCTACTTCTGGGCTCAATCGTGAACCTCAGCCAAG
 ACCCAGATGTGCATCTGAAATACATTAGGCTGCCTGTAAGACAGGGCAGATCAAGGAGGTGGAGAGGAT
 ATGCCGAGAGAGCAGCTGCTACAACCCAGAGCGTGTGAAGAACTCCTGAAGGAGGCCAAGCTCACAGAC
 CAGTTCCCTCATCATCGTGTGTGATCGTTTTGGCTTGTCCATGACCTTGTCTATATTTATACCGCA
 ACAACCTGCAGAGGTACATTGAGATCTACGTGCAGAAGGTCAACCCTAGCCGGACCCAGCTGTGATTGG
 AGGGCTGCTTGATGTGGATTGTTCTGAGGAAGTGATTAACACTTAATCATGGCAGTGAGAGGACAGTTC
 TCTACTGATGAGTTGGTGGCTGAAGTAGAAAAAGAAAATAGGCTCAAGCTGCTGCTCCCTGGCTGGAGT
 CCCAGATTCAGGAAGGCTGTGAGGAGCCTGCCACTCACAATGCACCTGGCTAAAATCTACATCGACAGCAA
 CAACAGCCCCGAGTGTCTCCTGAGAGAGAATGCCTACTATGACAGCAGCGTGGTGGGCCGCTACTGTGAG
 AAGCGAGACCCCCATCTGGCCTGTGTGGCTATGAGCGGGGGCAGTGTGACCTTGAGCTCATCAAGGTGT
 GCAATGAGAATCTCTGTTCAAAAGCGAGGCCGCTACCTGGTATGCAGAAAGGATCCGGAGCTCTGGGC
 TCACGTCTTGAGGAGACCAACCCATCCAGGAGACAGTAATTGACCAGGTGGTACAGACAGCATTGTCA
 GAAACACGGGATCCTGAAGAGATTTCCGTCACCTGTCAAAGCCTTATGACAGCCGACCTGCCTAATGAAC
 TGATTAACCTGCTGGAGAAGATAGTTCTGGATAACTCTGTCTTCAGCGAGCACAGGAATCTACAGAATCT
 GTTGATCCTGACTGCCATCAAGGCAGACCGCACACGGGTCTGGAGTACATCAGCCGCTGGACAACAT
 GACGCACTGGACATCGCGAGCATCGCTGTGAGGAGCCTTACCCTTTCCACA
 AGTTTGATATGAATGCCTCAGCAATCCAGTCTGATCGAGCACATTGGAACCTGGACCGGCATATGA
 GTTTGGGAGAGATGCAATGAGCCTGCTGTGTGGAGTCACTGGCCCAAGCCAGCTCCAGAAAGATTTG
 GTGAAGGAAGCCATCACTCCTATATCAGAGGGGACGACCCTTCTTACCTGGAAGTTGTTCACTCAG
 CCAGCAGGAGCAACAACCTGGGAGGATCTAGTTAAATTTCTGCAGATGGCCAGGAAAAAGGCCGTGAGTC
 CTATATAGAGACTGAACCTATTTTTGCCTTGGCTAAAACCAGCCGTGTTTCTGAGCTAGAAGATTTTATT
 AATGGACCAACAATGCCACATCCAGCAGGTTGGAGACCCTGTTACGAGGAGGAATGTACGAGGCTG
 CCAAGCTGCTCTATAGCAATGTTTCTAACTTTGCCCGCCTGGCTCCACCTTGGTTCACCTCGGTGAGTA
 TCAGGCAGCAGTGGACAACAGCCGAAGGCCAGCAGCACCCGGACGTGGAAGGAGGTGTGCTTTGCCTGC
 ATGGATGGACAAGAGTTCCGCTTCGCACAGCTGTGTGGTCTTACATCGTCATTATGCAGATGAGCTGG
 AGGAGCTGATGTGCTATTACCAGGATCGTGGCTACTTTGAGGAGCTGATCTTGCTGTTGGAAGCGGCCCT
 GGGCCTGGAGCGGGCCACATGGGCATGTTCACTGAGCTGGCCATCCTCTACTCCAAATTAAGCCACAG
 AAGATGCTGGAGCATCTGGAGCTTTTCTGGTCCCGTGTCAACATCCCAAAGGTGCTGAGGGCTGCAGAGC
 AGGCACACCTGTGGGCTGAGCTGGTGTCTCTATGACAAGTACGAGGAGTATGACAATGCTGTGCTCAC
 CATGATGAGCCACCCACTGAGGCTGGAAGGAGGGTCAGTTCAAGGACATCATTACCAAGTTGCCAAC
 GTCGAGCTCTGTTACAGAGCCCTGCAGTTCTATTTGGATTACAAACCACTGCTCATCAATGACCTGCTGC
 TGGTGCTTTACCCCGGCTGGACCACACCTGGACAGTCAGTTTCTTTTCAAGGCAGGTGAGCTGCCCT
 GGTGAAGCCTTACCTGCGGTGAGTCCAGAGCCACAACAACAAGAGTGTGAATGAGGCACTCAACCACCTG
 CTGACAGAGGAGGAGGACTATCAGGGCTTAAGGGCATCTATCGATGCCTATGACAACCTTTGACAACATCA
 GCCTGGCTCAGCAGCTGGAGAAGCATCAGCTGATGGAGTTCAGGTGCATTGCGGCCTATCTGTACAAGGG
 CAATAACTGGTGGGCCAGAGCGTGGAGCTCTGCAAGAAGGATCATCTCTACAAGGATGCCATGCAGCAT
 GCTGCAGAGTCGCGGGATGCTGAGCTGGCCAGAAGTTGCTGCAGTGGTTCCTGGAGGAAGCAAGAGGG
 AGTGCTTCGCAGCTTGTCTTTACCTGCTATGACCTGCTTCGCCAGACATGGTCTTGAGCTGGCCTG
 GAGGCACAACCTCGTGGACTTGGCCATGCCTACTTCATCCAGGTGATGAGGGAGTACCTGAGCAAGGTG
 GACAACTGGATGCCTTGAGAGTCTGCGCAAGCAAGAGGAGCATGTGACAGAGCCTGCCCTCTCGTGT
 TTGATTTTATGGGCATGAA

ACGCGTACGCGGCCGCTCGAGCAGAACTCATCTCAGAAGAGGATCTGGCAGCAATGATATCCTGGATT

ACAAGGATGACGACGATAAGGTTTAA

Protein Sequence:

>RC224639 representing NM_007098
 Red=Cloning site Green=Tags(s)

MAQILPVRFQEHFQLQNLGINPANIGFSTLTMESDKFICIREKVGQAQVTTIIDMSDPMAPIRRPISAES
 AIMNPASKVIALKAGKTLQIFNIEMKSKMKAHTMAEEVIFWKWVSVNTVALVTETAVYHWSMEGDSQPMK
 MFDHRHTSLVGCQVIHYRTDEYQKWL L L V G I S A Q Q N R V V G A M Q L Y S V D R K V S Q P I E G H A A F A E F K M E G N A
 KPATLFCFAVRNPTGGKLHIEVGPAAAGNQPFVYKAVDVFFPPEAQNDFPVAMQIGAKHGVIYLITKYG
 YLHLYDLESGVICMNRISADTIFVTAPHKPTSGIIGVNKKGQVLSVCVEEDNIVNYATNVLQNPDLGLR
 LAVRSNLAGAELFVRKFNFLFAQGSYAEAAKVAASAPKGI L R T R E T V Q K F Q S I P A Q S G Q A S P L L Q Y F G I
 LLDQGLNKLKLELCHLVLQQGRKQLEKWLKEDKLECESEELGDLVKTDPMLALSVYLRANVPSKVIQ
 CFAETGQFQKIVLYAKKVGYPDWIFLLRGVMKISPEQGLQFSRMLVQDEEPLANISQIIVDIFMENS LI Q
 QCTSFLLDALKNNRPAEGLLQTWLLMNLVHAPQVADAILGNKMFTHYDRAHIAQLCEKAGLLQQALEHY
 TDLYDIKRAVVHTHLLNPEWLVNFFGSLSVEDSVECLHAML SANIRQNLQLCVQVASKYHEQLGTQALVE
 LFESFSYKGLFYFLGSI V N F S Q D P D V H L K Y I Q A A C K T G Q I K E V E R I C R E S S C Y N P E R V K N F L K E A K L T D
 QLPLIIVCDRFGFVHDLVLYLRNQLQRYIEIYVQKVNPSRTPAVIGLLD V D C S E E V I K H L I M A V R G Q F
 STDELVAEVEKRNLKLLPWLESQIQEGCEEPATHNALAKIYIDSNNSPECFLRENAYYDSSVVGRYCE
 KRDPHLACVAYERGQCDLELIKVCNENSLFKSEARYLVCRKDPELWAHVLEETNPSRRQLIDQVVQTALS
 ETRDPEEISVTVKAFMTADLPNELIELLEKIVLDNSVFSEHRNLQNL L I L T A I K A D R T R V M E Y I S R L D N Y
 DALDIASIAVSSALYEEAFVTFHKFDMNASAIQVLIHIGNLDRAVEFAERCNEPAVWSQLAQAQLQKDL
 VKEAINSYIRGDDPSSYLEVVQSASRSNNWEDLVKFLQMARKKGRESYIETELIFALAKTSRVSELEDFI
 NGPNNAHIQQVGDRCYEEGMYEAAKLLYSNVSNFARLASTLVHLGEYQAAVDNSRKASSTRTWKEVCFAC
 MDGQEFRFQAQLCGLHIVIHADALEELMCCYYQDRGYFEELILLLEAALGLERAHMGMFTELA I L Y S K F K P Q
 KMLEHLELFWSRVNIPKVLRAEAQHLWAEVFLYDKYEEYDNAVLTMMSHPTAEAWKEGQFKDIITKVAN
 VELCYRALQFYLDYKPLLINDLLLVLSPRLDHTWTVSFFSKAGQLPLVKPYLRSVQSHNNKSVNEALNHL
 L T E E E D Y Q G L R A S I D A Y D N F D N I S L A Q Q L E K H Q L M E F R C I A A Y L Y K G N N W A Q S V E L C K K D H L Y K D A M Q H
 AAESRDAELAQKLLQWFLEEGKRECFAACLFCTCYDLLRPDMVLELAWRHNLVDLAMPYFIQVMREYLSKV
 DKLDALESLRKQEEHVTEPAPLVDFDFGHE

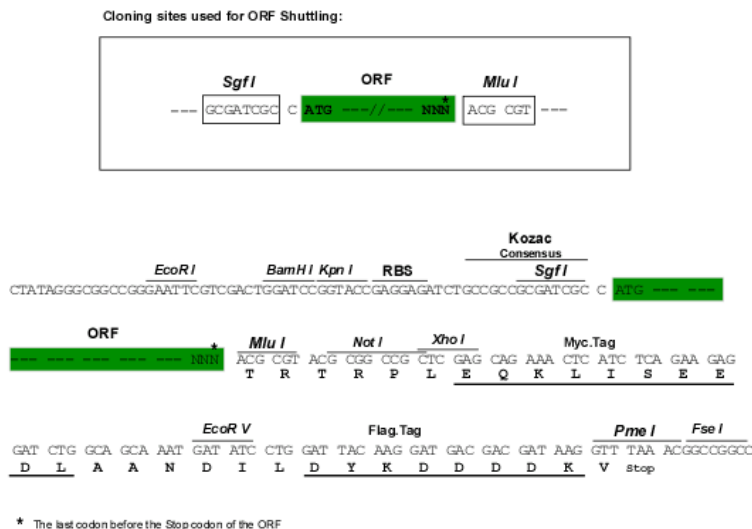
TRTRPLEQKLISEEDLAANDILDYKDDDDKV

Chromatograms:

https://cdn.origene.com/chromatograms/mk8045_d12.zip

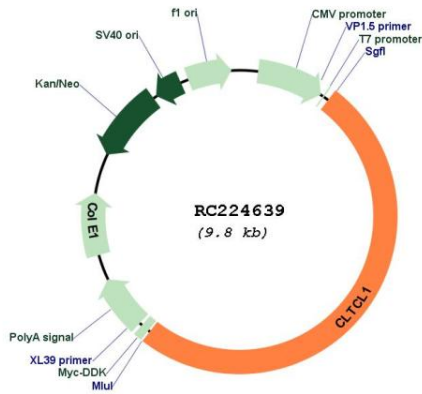
Restriction Sites:

SgfI-MluI

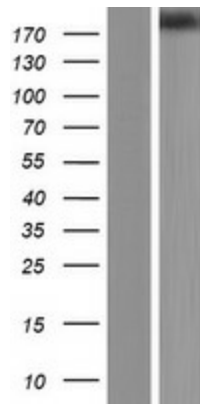
Cloning Scheme:


ACCN:	NM_007098
ORF Size:	4920 bp
OTI Disclaimer:	The molecular sequence of this clone aligns with the gene accession number as a point of reference only. However, individual transcript sequences of the same gene can differ through naturally occurring variations (e.g. polymorphisms), each with its own valid existence. This clone is substantially in agreement with the reference, but a complete review of all prevailing variants is recommended prior to use. More info
OTI Annotation:	This clone was engineered to express the complete ORF with an expression tag. Expression varies depending on the nature of the gene.
Components:	The ORF clone is ion-exchange column purified and shipped in a 2D barcoded Matrix tube containing 10ug of transfection-ready, dried plasmid DNA (reconstitute with 100 ul of water).
Reconstitution Method:	<ol style="list-style-type: none">1. Centrifuge at 5,000xg for 5min.2. Carefully open the tube and add 100ul of sterile water to dissolve the DNA.3. Close the tube and incubate for 10 minutes at room temperature.4. Briefly vortex the tube and then do a quick spin (less than 5000xg) to concentrate the liquid at the bottom.5. Store the suspended plasmid at -20°C. The DNA is stable for at least one year from date of shipping when stored at -20°C.
RefSeq:	NM_007098.4
RefSeq Size:	5525 bp
RefSeq ORF:	4923 bp
Locus ID:	8218
UniProt ID:	P53675
Cytogenetics:	22q11.21
Protein Families:	Druggable Genome
Protein Pathways:	Endocytosis, Huntington's disease, Lysosome
MW:	186.9 kDa
Gene Summary:	This gene is a member of the clathrin heavy chain family and encodes a major protein of the polyhedral coat of coated pits and vesicles. Chromosomal aberrations involving this gene are associated with meningioma, DiGeorge syndrome, and velo-cardio-facial syndrome. Multiple transcript variants encoding different isoforms have been found for this gene. [provided by RefSeq, Jun 2009]

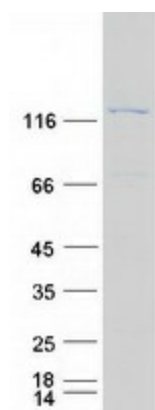
Product images:



Circular map for RC224639



Western blot validation of overexpression lysate (Cat# [LY416211]) using anti-DDK antibody (Cat# [TA50011-100]). Left: Cell lysates from untransfected HEK293T cells; Right: Cell lysates from HEK293T cells transfected with RC224639 using transfection reagent MegaTran 2.0 (Cat# [TT210002]).



Coomassie blue staining of purified CLTCL1 protein (Cat# [TP324639]). The protein was produced from HEK293T cells transfected with CLTCL1 cDNA clone (Cat# RC224639) using MegaTran 2.0 (Cat# [TT210002]).