

Product datasheet for **RC224638**

GTF2IRD2 (NM_173537) Human Tagged ORF Clone

Product data:

Product Type:	Expression Plasmids
Product Name:	GTF2IRD2 (NM_173537) Human Tagged ORF Clone
Tag:	Myc-DDK
Symbol:	GTF2IRD2
Synonyms:	FP630; GTF2IRD2 alpha; GTF2IRD2A
Mammalian Cell Selection:	Neomycin
Vector:	pCMV6-Entry (PS100001)
E. coli Selection:	Kanamycin (25 ug/mL)



[View online »](#)

ORF Nucleotide Sequence:

>RC224638 representing NM_173537
 Red=Cloning site Blue=ORF Green=Tags(s)

TTTTGTAATACGACTCACTATAGGGCGGCCGGGAATTCGTCGACTGGATCCGGTACCGAGGAGATCTGCC
 GCC**CGGATCGCC**

ATGGCCCAGGTAGCAGTGTCCACCTGCCTGTTGAAGAAGAGTCTCCTCAGAGACCAGGATGGTGGTGA
 CATTCTCGTGTCTGCCCTCGAATCCATGTGTAAGAAGTGGCCAAGTCCAAGGCAGAAGTGGCCTGCAT
 CGCAGTGTACGAAACAGACGTGTTTGTCTCGGAACCGAGAGAGGATGCGCTTTTGTAAATGCCAGGACG
 GATTTTCAGAAAGATTTTGCAAAATACTGCGTTGCAGAGGGACTGTGTGAGGTGAAACCTCCCTGCCCTG
 TGAACGGGATGCAGGTCCACTCGGGCGAAACGAAATACTCAGGAAGGCAGTGGAGGACTATTTCTGCTT
 TTGTTATGGTAAAGCCTTAGGGACAACAGTGTGGTGCCTGTTCCCTATGAGAAGATGCTGCGAGACCAG
 TCGGCTGTGGTAGTGCAGGGCTTCCGGAAGGCGTTGCCTTCAACACCTGAGAATTACGACCTTGCAA
 CCCTGAAATGGATTTGGAGAACAAGCAGGGATTTTCATTCATATAAATAGACCCTTCTAGGACCAGA
 GAGTCAGCTGGGTGGCCCTGGGATGGTAAACAGATCGCGAGAGATCCATAGTATCACCAAGTAAAAGCTGC
 GGCCCATCAATGTGAAAACGAACTGAAAGATTCTGGCATTCACTGAAAAGCAGAAGCTGTCTCAG
 TCAAGAAAGAATCAGAAGATCCTAATTACTATCAATATAATATGCAAGGAAGCCACCTTCTCCACAAG
 CAATGAAGTAATAGAAATGGAATTACCAATGGAAGATCCACTCCGCTGGTCCCTTCAGAAGAACCAAAAT
 GAGGACCTGAAGCCGAGGTGAAAATCGAAGGAAACACAAATTCATCCAGTGTACAAAATTCGACGACG
 GTGTTGAAGATCTTAACATCGTTCAAGTACTGTTCCAGATAATGAGAAGGAAAGATTATCAAGCATTGA
 AAAGATTAACAGCTAAGAGAACAAGTTAATGACCTCTTAGCCGAAAATTTGGTGAAGCAATTGGCGTG
 GATTTCCCTGTGAAAGTCCCTACAGGAAGATCACATTAACCTGGCTGTGTGGTATTGATGGCATGC
 CCCCAGGGGTGGTATTCAAGGCCCGGCTATCTGGAAATCAGTCCATGAGGAGGATCTTGGAGGACG
 TGAGTTTATCAAATTCACAGTCATCAGGCGCTTCCAGGGCTTGAGCTCAGTAATGTGGAAAACGCAAG
 ATAGACCAGGAGGCGGTGTGTTTCAAGAAAAGTGGGAGAGAGCGTATTTCTCGTGAAGTACAGAATA
 TTCCAACATGTCTCATATGCAAAACAAAGCATGTCTGTGTCCAAAGAATATAACCTAAGACGCCACTATCA
 AACCAATCACAGCAAGCATTATGACCAGTATATGGAAAGAATGCGTGACGAGAAGCTTACGAGCTGAAA
 AAAGGGCTCAGGAAGTATCTCTTAGGCTGTGACACCCGAGTGTCCGAGCAAAAACAAGTGTTCGAC
 ACCCAAGTCAACCCAGAAAATCCCCGTCAGCCTGTAGAGGACCTAGCTGGAACTTATGGGAGAAGT
 ACGTGAAAAAATCAGGTCTTTGTGGCATATTCTATCGCAATCGATGAGATCACGGATATAAATAATACC
 ACCCAGTTGGCCATATTCATCCGTGGTGTGATGAGAATTCGATGTGTCCGAAGAACTTCTGGACACGG
 TGCCCATGACGGGTACAAAATCTGGCAACGAGATCTTTTCGCGTGTGAGAAGAGCCTGAAAAGTTCTG
 TATCGACTGGTCGAAATAGTAAGCGTGGCCTCCACTGGCACCCAGCGATGGTGGATGCCAATAACGGG
 CTTGTCAAAAACGAAGTCCAGGGTGGCGACGTTCTGCAAGGGTGGCGAACTGAAGTCCATCTGTTGTA
 TAATTCATCCGGAATCACTCTGTGCTCAGAAGTTGAAGATGGACCACGTCATGGACGTGGTGTGAGATC
 CGTGAAGTGGATATGCTCCCGGGACTGAACCACAGTGAAGTTCACAACCTTGCTCTATGAGCTGGACAGC
 CAGTATGGTAGCCTCCTGTAACACGGAGATTAAGTGGCTCAGTCGCGGGCTCGTGCTAAAGAGATTTT
 TCGAATCCTTGAAGAAAATCGACTCCTTCATGTATCCAGAGGAAAACCCCTGCCTCAACTGAGCTCCAT
 AGATTGGATCCGAGACCTGGCCTTCTTGGTTGACATGACGATGCATCTGAACGCTTTGAACATCTCTC
 CAAGGACACTCCCAAATCGTCACGAGATGTATGACCTGATCCGGGCTTCCAGCAAACTGTGCCTCT
 GGGAGACTCATTTGACGAGGAATAATCTGGCCACTTTCCACCCTGAAATGGCTTCCAGAAAATGAAAG
 CGATGGCCTGAAGTACATTTCCAAAATCGCGGAACTCAAGACCGAATTCAGAAAAGGCTGTCTGATTTT
 AAATCTACGAAAGCGAACTGACTCTGTTAGCTCCCCGTTCTCCACGAAGATCGACAGTGTGCACGAGG
 AGCTCCAGATGGAGGTTATCGACCTGCAATGCAACACGGTCTGAAGACGAAATACGACAAGGTGGGAAT
 ACCAGAATTCTACAAGTACCTCTGGGTAGCTACCCGAAATACAAGCACCATTGCGCAAAGATTCTTTCC
 ATGTTCCGGGAGCACCTACATCTGCGAACAGCTGTTCTCCATTATGAAACTGAGCAAAAACAAAATACTGCT
 CCCAGTTAAAGGATCCAGTGGGATTCTGTACTCCACATCGCAACG

ACGCGTACGCGGCCGCTCGAGCAGAAAACCTCATCTCAGAAGAGGATCTGGCAGCAAATGATATCCTGGATT
 ACAAGGATGACGACGATAAGGTTTAA

Protein Sequence: >RC224638 representing NM_173537
 Red=Cloning site Green=Tags(s)

MAQVAVSTLPVEEESSETRMVVTFVLSALESMCKELAKSKAEVACIAVYETDVFVVGTERGCFAVNART
 DFQKDFAKYCVAEGLCEVKPPCVNGMQVHSGETEILRKAVEDYFCFCYKALGTTVMVPVPEYKMLRDQ
 SAVVVQGLPEGVAFQHPENYDLATLKWILENKAGISFIIINRPFLGPESQLGGPGMVTDAERSIVSPSEC
 GPINVKTEPMEDSGISLKAFAVSVKKESEDPNYYQYNMQGSHPSSTNEVIEMELPMEDSTPLVPSEPN
 EDPEAEVKIEGNTNSSSVTNSAAGVEDLNIVQVTPDNEKERLSSIEKIKQLREQVNDLFSRKFGEAIGV
 DFPVKVPYRKITFNPGCVVVDGMPPGVVFKAPGYLEISSMRRILEAAEFIKFTVIRPLGLELSNVGKRK
 IDQEGRVFQEKWERAYFFVEVQNIPTCLICKQSMSVSKEYNLRHRYQTNHSHYDQYMERMRDEKLHELK
 KGLRKYLGLSDTECPKQVFAHPSPTQKSPVQPVEDLAGNLWEKLREKIRSFVAYSIAIDEITDINNT
 TQLAIFIRGVDFVSEELDTVPMTGKSGNEIFSRVEKSLKKFCIDWSKLVSVASTGTPAMVDANNG
 LVTKLKSrvATFCKGAELKSICCIHPESLCAQKLKMDHVMVVVKSvNWIcSRGLNHSEFTLLYELDS
 QYGSLLYYTEIKWLSRGLVLRFFESLEEIDSFMSRSGKPLPQLSSIDWIRDLAFLVDMTMLNALNISL
 QGHSQIVTQMYDLIRAFKAKLCLWETHLTRNNLAHFPTLKLASRNESDGLNYIPKIAELKTEFQKRLSDF
 KLYESELTLFSSPFSTKIDSVHEELQMEVIDLQCNTVLKTKYDKVGIPEFYKYLWGSYPKYKHKAKILS
 MFGSTYICEQLFSIMKLSKTKYCSQLKDSQWDSVLHIAT

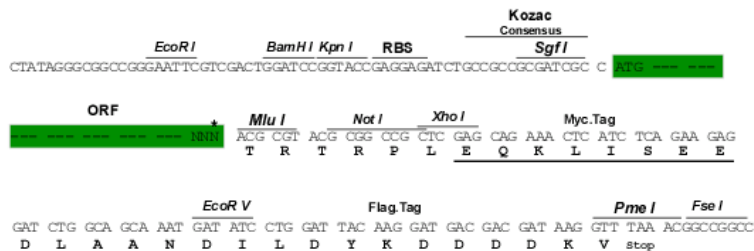
TRTRPLEQKLISEEDLAANDILDYKDDDDKV

Chromatograms: https://cdn.origene.com/chromatograms/mk8102_a08.zip

Restriction Sites: SgfI-MluI

Cloning Scheme:

Cloning sites used for ORF Shuttling:



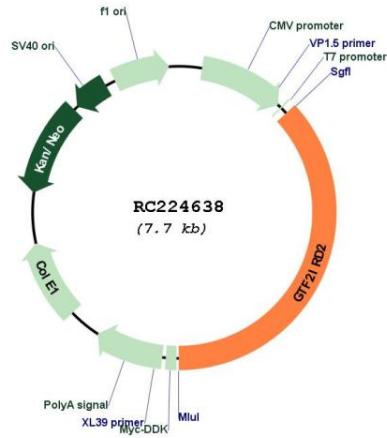
* The last codon before the Stop codon of the ORF

ACCN: NM_173537

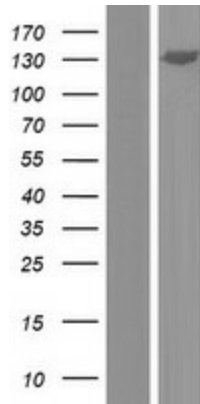
ORF Size: 2847 bp

OTI Disclaimer:	The molecular sequence of this clone aligns with the gene accession number as a point of reference only. However, individual transcript sequences of the same gene can differ through naturally occurring variations (e.g. polymorphisms), each with its own valid existence. This clone is substantially in agreement with the reference, but a complete review of all prevailing variants is recommended prior to use. More info
OTI Annotation:	This clone was engineered to express the complete ORF with an expression tag. Expression varies depending on the nature of the gene.
Components:	The ORF clone is ion-exchange column purified and shipped in a 2D barcoded Matrix tube containing 10ug of transfection-ready, dried plasmid DNA (reconstitute with 100 ul of water).
Reconstitution Method:	<ol style="list-style-type: none">1. Centrifuge at 5,000xg for 5min.2. Carefully open the tube and add 100ul of sterile water to dissolve the DNA.3. Close the tube and incubate for 10 minutes at room temperature.4. Briefly vortex the tube and then do a quick spin (less than 5000xg) to concentrate the liquid at the bottom.5. Store the suspended plasmid at -20°C. The DNA is stable for at least one year from date of shipping when stored at -20°C.
RefSeq:	NM_173537.2 , NP_775808.2
RefSeq Size:	3551 bp
RefSeq ORF:	2850 bp
Locus ID:	84163
UniProt ID:	Q86UP8
Cytogenetics:	7q11.23
Protein Families:	Transcription Factors
MW:	107.2 kDa
Gene Summary:	This gene is one of several closely related genes on chromosome 7 encoding proteins containing helix-loop-helix motifs. These proteins may function as regulators of transcription. The encoded protein is unique in that its C-terminus is derived from CHARLIE8 transposable element sequence. This gene is located in a region of chromosome 7 that is deleted in Williams-Beuren syndrome, and loss of this locus may contribute to the cognitive phenotypes observed in this disease. Alternative splicing results in multiple transcript variants. [provided by RefSeq, Jul 2013]

Product images:



Circular map for RC224638



Western blot validation of overexpression lysate (Cat# [LY406336]) using anti-DDK antibody (Cat# [TA50011-100]). Left: Cell lysates from untransfected HEK293T cells; Right: Cell lysates from HEK293T cells transfected with RC224638 using transfection reagent MegaTran 2.0 (Cat# [TT210002]).