

Product datasheet for RC224634

MECR (NM_016011) Human Tagged ORF Clone

Product data:

Product Type:	Expression Plasmids
Product Name:	MECR (NM_016011) Human Tagged ORF Clone
Tag:	Myc-DDK
Symbol:	MECR
Synonyms:	CGI-63; DYTOABG; ETR1; FASN2B; NRBF1
Mammalian Cell Selection:	Neomycin
Vector:	pCMV6-Entry (PS100001)
E. coli Selection:	Kanamycin (25 ug/mL)
ORF Nucleotide Sequence:	>RC224634 ORF sequence Red=Cloning site Blue=ORF Green=Tags(s)

TTTTGTAATACGACTCACTATAGGGCGGCCGGAATTCGTCGACTGGATCCGGTACCGAGGAGATCTGCC
GCC**CGATCGCC**

ATGTGGGTCTGCAGTACCCTGTGGCGGGTGCGAACCCCGCCCGGCAGTGGCGGGGGTCTCCAGCTT
CTGGCTGTACGGACCTGCCCTCCTCTACTCCGCATCCGCCGAGCCTGCCCGGGTCCGGGCGCTTGT
CTATGGGCACCACGGGGATCCAGCCAAGGTCGTGCAACTCAAGAACCTGGAGCTAGCTGCTGTGAGAGGA
TCAGATGTCGGTGAAGATGCTGGCGGCCCTATCAATCCATCTGACATAAATATGATCCAAGGAACT
ACGGACTCCTTCTGAAGTGCCTGCTGTTGGAGGGAACGAAGGTGTTGCACAGGTGGTAGCGGTGGGCAG
CAATGTGACCGGGCTGAAGCCAGGAGACTGGGTGATTCCAGCAAATGCTGGTTTAGGAACCTGGCGGACC
GAGGCTGTGTTACGCGAGGAAGCACTGATCCAAGTTCGAGTGACATCCCTCTTCAGAGCGCTGCCACCC
TGGGTGTCAATCCCTGCACAGCCTACAGGATGTTGATGGACTTCGAGCAACTGCAGCCAGGGGATTCTGT
CATCCAGAATGCATCCAACAGCGGAGTGGGGCAAGCGGTATCCAGATCGCCGACGCCCTGGGCCTAAGA
ACCATCAATGTGGTCCGAGACAGACCTGATATCCAGAAGCTGAGTGACAGACTGAAGAGTCTGGGGGCTG
AGCATGTCATCACAGAAGAGGAGCTAAGAAGGCCCGAAATGAAAACTTCTTTAAGGACATGCCCCAGCC
ACGGCTTGCTCTCAACTGTGTTGGTGGGAAAAGCTCCACAGAGCTGCTGCGGCAGTTAGCGCGTGGAGGA
ACCATGGTAACCTATGGGGGATGGCCAAGCAGCCCGTCTGAGCCTCTGTGAGCCTGCTCATTTTTAAGG
ATCTCAAACCTTCGAGGCTTTTGGTTGTCCAGTGGGAAGAAGGATCACAGTCCAGACCAGTTCAAGGAGCT
GATCCTCACACTGTGCGATCTATCCGCCGAGGCCAGCTCACAGCCCTGCCTGCTCCAGGTCCCGCTG
CAGGACTACCAGTCTGCCTTGGAAAGCCTCCATGAAGCCCTTCATATCTTCAAAGCAGATTCTCACCATG

ACGCGTACGCGGCCGCTCGAGCAGAACTCATCTCAGAAGAGGATCTGGCAGCAAATGATATCCTGGATT
ACAAGGATGACGACGATAAGGTTTAA



[View online »](#)

Protein Sequence: >RC224634 protein sequence
Red=Cloning site Green=Tags(s)

MWVCSTLWRVRTPARQWRGLLPASGCHGPAASSYSASAEPARVRALVYGHGDPKAVVELKNLELAAVRG
SDVRVKMLAAPINPSDINMIQGNVGLLPELPAVGGNEGVAQVVAVGSNVTGLKPGDWVIPANAGLGTWRT
EAVFSEEALIQVPSDIPLQSAATLGVNPTAYRMLMDFEQLQPGDSVIQNASNSGVGQAVIQIAAALGLR
TINVVRDRPDIQKLSDRLKSGLGAEHVITEEELRRPEMKNFFKDMPPQRLALNCVGGKSSTELLRQLARGG
TMVTYGGMAKQPVVASVSLLIIFKDLKLRGFWLSQWKKDHSPDQFKELILTLCDLIRRQLTAPACSQVPL
QDYQSALEASMKPFISSKQILTM

TRTRPLEQKLISEEDLAANDILDYKDDDDKV

Chromatograms: https://cdn.origene.com/chromatograms/mk6400_g11.zip

Restriction Sites: SgfI-MluI

Cloning Scheme:



ACCN: NM_016011

ORF Size: 1119 bp

OTI Disclaimer: The molecular sequence of this clone aligns with the gene accession number as a point of reference only. However, individual transcript sequences of the same gene can differ through naturally occurring variations (e.g. polymorphisms), each with its own valid existence. This clone is substantially in agreement with the reference, but a complete review of all prevailing variants is recommended prior to use. [More info](#)

OTI Annotation: This clone was engineered to express the complete ORF with an expression tag. Expression varies depending on the nature of the gene.

Components: The ORF clone is ion-exchange column purified and shipped in a 2D barcoded Matrix tube containing 10ug of transfection-ready, dried plasmid DNA (reconstitute with 100 ul of water).

Reconstitution Method:

1. Centrifuge at 5,000xg for 5min.
2. Carefully open the tube and add 100ul of sterile water to dissolve the DNA.
3. Close the tube and incubate for 10 minutes at room temperature.
4. Briefly vortex the tube and then do a quick spin (less than 5000xg) to concentrate the liquid at the bottom.
5. Store the suspended plasmid at -20°C. The DNA is stable for at least one year from date of shipping when stored at -20°C.

RefSeq: [NM_016011.3](#)

RefSeq Size: 2539 bp

RefSeq ORF: 1122 bp

Locus ID: 51102

UniProt ID: [Q9BV79](#)

Cytogenetics: 1p35.3

Domains: ADH_zinc_N

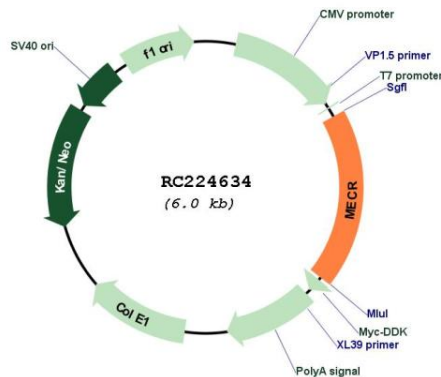
Protein Families: Druggable Genome

Protein Pathways: Fatty acid elongation in mitochondria, Metabolic pathways

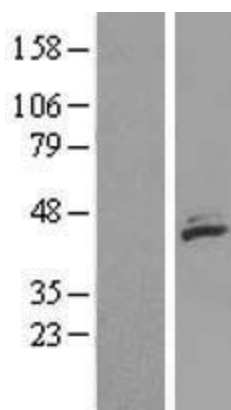
MW: 40.4 kDa

Gene Summary: The protein encoded by this gene is an oxidoreductase that catalyzes the last step in mitochondrial fatty acid synthesis. Defects in this gene are a cause of childhood-onset dystonia and optic atrophy. [provided by RefSeq, Mar 2017]

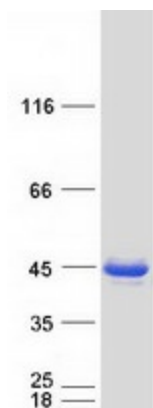
Product images:



Circular map for RC224634



Western blot validation of overexpression lysate (Cat# [LY414252]) using anti-DDK antibody (Cat# [TA50011-100]). Left: Cell lysates from un-transfected HEK293T cells; Right: Cell lysates from HEK293T cells transfected with RC224634 using transfection reagent MegaTran 2.0 (Cat# [TT210002]).



Coomassie blue staining of purified MECR protein (Cat# [TP324634]). The protein was produced from HEK293T cells transfected with MECR cDNA clone (Cat# RC224634) using MegaTran 2.0 (Cat# [TT210002]).