

Product datasheet for **RC224632**

GREB1 (NM_033090) Human Tagged ORF Clone

Product data:

Product Type:	Expression Plasmids
Product Name:	GREB1 (NM_033090) Human Tagged ORF Clone
Tag:	Myc-DDK
Symbol:	GREB1
Mammalian Cell Selection:	Neomycin
Vector:	pCMV6-Entry (PS100001)
E. coli Selection:	Kanamycin (25 ug/mL)



[View online »](#)

ORF Nucleotide Sequence:

>RC224632 representing NM_033090
 Red=Cloning site Blue=ORF Green=Tags(s)

TTTTGTAATACGACTCACTATAGGGCGGCCGGAATTCGTCGACTGGATCCGGTACCGAGGAGATCTGCC
 GCC**CGGATCGCC**

ATGGGAAATTCCTACGCTGGACAGCTGAAGACGACACGCTTTGAAGAGGTCTTGACAATCCATCGAGG
 CATCCCTGCGGTCCAACAACCTGGTGCCAGGCCATCTTTCCAGCTGTACCTGGAAGCTGAGCAGCA
 GCTTGCCGCTCTAGAAGGTGGTAGCCGAGTGGACAATGAGGAAGAGGAAGAAGAGGGAGAAGGAGGCTG
 GAAACAAATGGCCCCCAAACCTTTCCAGCTGCACCCTCGCCTGAAGGATGCTGTACCACAGACGGGT
 TTTGCCAGGCCGGAAGGACCTGCGCCTGTCTCCATTCCAACGAGCCCATGGATGTCCCTGCGGGCTT
 TCTCCTCGTGGGGTCAAGTCCCCCAGCCTGCCGGACCATCTCCTGGTGTGCGCCGTTGACAAGAGGTTT
 TTGCCAGATGACAATGGCCACAATGCTCTTCTGGTTTCTCTGGGAATTGTGTGGCTGTGAAAGAAAG
 GCTTCTGTACTTCACGGAATTCCAATCATATAAATCTGAAACTGACCACTCAACCAAGAAGCAGAA
 ACACTTGAAGTATTACCTGGTCCGTAATGCACAAGGGACTCTAACCAAGGACCTTAATCTGTTGGAAA
 GGCTCAGAGTTTAGAAGCCGGCAGATCCCCGCCAGTACTTGTCCAGTCCCTCTCCCAGCCCTGGAGA
 GCACGGCTGCCTCCCCAGCGAGCCGTTCTGGGACGAACCCAGCATCCTGATGGGAGCTCAGCAGGC
 AGGACCAGCTTCTGATCACCCCTCACTAAACGCAGCAATGGGTCCGGCTGTTTTCAACGGCAAAGATTCC
 CCGAAGTGCCAACTGGCAAAGAATAACCTGTTGGCCCTGCCGCGACCATCGGCTTTAGGTATCTTGT
 CAACTCCGGGCCCCCAAAAAACGCCACAAGGGTGGTCTCCAGAATCTCCATCAGCTCCAGATGGTGG
 CTGCCCCAAGGTGGTGGGAACAGAGCTAAGTATGAGAGCGCAGGCATGTCTGCGTGCCGAGGTTGGC
 TTGGTGGGACAGCTTCACTCACCTTCCAGTGGTGGCCTCTGGAGAACCAGTGTCTGTTCTGACAAC
 TGCTGAAAATATGCAAGCCAAGCCAGTGATATTTAAAGGCCATGGGAACCTTACCTCTGTGGGAA
 CCTGAATGACGTGCTGGTCAGCCCCCTTGTACACGTGCTACCAGAATCCAGTCTGTCTCACGGGCA
 TACGAGCAGTACGGCGCCTCTGCCATCCAGCCATCTCCGAGGAGATGCAGCTCCTGCTTACCGTCTACT
 ACCTGGTCCAGCTGGCACATCAAATACGAAATCCGGACGTA

ACGCGTACGCGGCCGCTCGAGCAGAACTCATCTCAGAAGAGGATCTGGCAGCAAATGATATCCTGGATT
 ACAAGGATGACGACGATAAGGTTTAA

Protein Sequence:

>RC224632 representing NM_033090
 Red=Cloning site Green=Tags(s)

MGNSYAGQLKTRFEEVLHNSIEASLRSNLVRPPIFSQLYLEAEQQLAALEGGSRVDNEEEEEEGEGL
 ETNGPPNPFQLHPLPEGCCTTDGFCQAGKDLRLVSI SNEPMDVPAGFLLVGKSPSLPDHLLVCAVDKRF
 LPDDNGHNALLGFSGNCVCGKKGFCYFTEFSNHINLKLTTQPKKQKHLKYLV RNAQGLTKGPLICWK
 GSEFRSRQIPASTCSSSLFPALESTAAFPSEVPGTNPSILMGAQQAGPASPDPHSLNAAMGPAVFNGKDS
 PKCQQLAKNNLLALPRPSALGILSNSGPPKRRHKGWSPESSAPDGGCPQGGGNRAKYESAGMSCVPQVG
 LVGPASVTFPVVASGEPVSPDNLLKICKAKPVIKFGHGNFPYLCGNLNDVVVSPLLTYCYQNSQVSRA
 YEYQASAIQPISEEMQLLLTVYYLVQLAHQIRNPDV

TRTRPLEQKLISEEDLAANDILDYKDDDDKV

Chromatograms:

https://cdn.origene.com/chromatograms/mk8061_c07.zip

Restriction Sites:

SgfI-MluI

Cloning Scheme:

Cloning sites used for ORF Shutting:



* The last codon before the Stop codon of the ORF

ACCN: NM_033090

ORF Size: 1371 bp

OTI Disclaimer: The molecular sequence of this clone aligns with the gene accession number as a point of reference only. However, individual transcript sequences of the same gene can differ through naturally occurring variations (e.g. polymorphisms), each with its own valid existence. This clone is substantially in agreement with the reference, but a complete review of all prevailing variants is recommended prior to use. [More info](#)

OTI Annotation: This clone was engineered to express the complete ORF with an expression tag. Expression varies depending on the nature of the gene.

Components: The ORF clone is ion-exchange column purified and shipped in a 2D barcoded Matrix tube containing 10ug of transfection-ready, dried plasmid DNA (reconstitute with 100 ul of water).

Reconstitution Method:

1. Centrifuge at 5,000xg for 5min.
2. Carefully open the tube and add 100ul of sterile water to dissolve the DNA.
3. Close the tube and incubate for 10 minutes at room temperature.
4. Briefly vortex the tube and then do a quick spin (less than 5000xg) to concentrate the liquid at the bottom.
5. Store the suspended plasmid at -20°C. The DNA is stable for at least one year from date of shipping when stored at -20°C.

RefSeq: [NM_033090.3](#)
RefSeq Size: 2347 bp

RefSeq ORF: 1374 bp

Locus ID: 9687

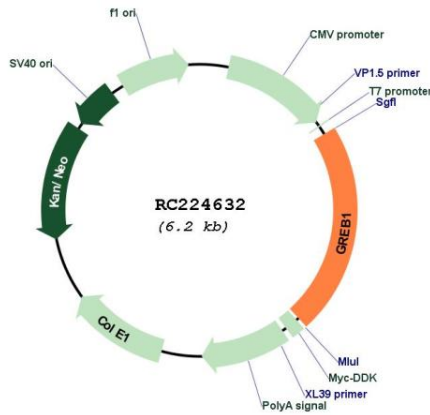
UniProt ID: [Q4ZG55](#)

Cytogenetics: 2p25.1

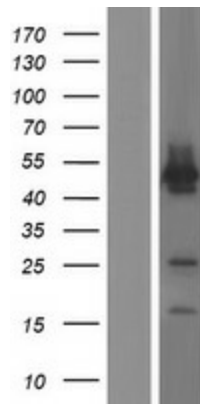
MW: 48.8 kDa

Gene Summary: This gene is an estrogen-responsive gene that is an early response gene in the estrogen receptor-regulated pathway. It is thought to play an important role in hormone-responsive tissues and cancer. Three alternatively spliced transcript variants encoding distinct isoforms have been found for this gene. [provided by RefSeq, Jul 2008]

Product images:



Circular map for RC224632



Western blot validation of overexpression lysate (Cat# [LY409740]) using anti-DDK antibody (Cat# [TA50011-100]). Left: Cell lysates from untransfected HEK293T cells; Right: Cell lysates from HEK293T cells transfected with RC224632 using transfection reagent MegaTran 2.0 (Cat# [TT210002]).