

Product datasheet for RC224630

HES3 (NM_001024598) Human Tagged ORF Clone

Product data:

Product Type: Expression Plasmids
Product Name: HES3 (NM_001024598) Human Tagged ORF Clone
Tag: Myc-DDK
Symbol: HES3
Synonyms: bHLHb43
Mammalian Cell Selection: Neomycin
Vector: pCMV6-Entry (PS100001)
E. coli Selection: Kanamycin (25 ug/mL)
ORF Nucleotide Sequence: >RC224630 representing NM_001024598
 Red=Cloning site Blue=ORF Green=Tags(s)

TTTTGTAATACGACTCACTATAGGGCGGCCGGAATTCGTCGACTGGATCCGGTACCGAGGAGATCTGCC
 GCC**CGATCGCC**

ATGGAGAAAAAGCGCCGGGCACGCATCAATGTGTCACTGGAGCAGCTCAAGTCGCTGCTGGAGAAACACT
 ACTCGCACCAGATCCGGAAGCGCAAATTGGAGAAGGCCGACATCTGGAGTTGAGCGTGAAGTACATGAG
 AAGCCTTCAGAACTCCTTGAAGGGCTCTGGCCTGTGCCAGGGGAGCCGAGCAACCGTCGGGCTCCGC
 AGCTGCCTGCCCGCGTGAGCCAGCTCCTCGGCGGGAGATGAGGTCGGCAGCGGCTGCGCTGCCCC
 TGGTGCCCGAGAGCGCCCGGCAGCACCATGGACAGCGCGGGTTGGCCAGGAGCGCCCGCGCTGTT
 CCGCCCTTGACCCCTGCCGTCTGGGCTCCTGCTCCGGCCGCGCGGCCGCGGTCCTCCACCACCCTG
 CTCTCTCCCGAAAGTCTCCCTGGCTCGTCCGCCAGCGTCCCCCGCCGAGCCAGCGTCGAGTCGCT
 CGCGCGAGAGTCCCGGGCTGGGCTGCGCGTGTGGCGGCCCTGGGGAAGCCCCGGGGATGACCTGAAC

ACGCGTACGCGGCCGCTCGAGCAGAACTCATCTCAGAAGAGGATCTGGCAGCAAATGATATCCTGGATT
 ACAAGGATGACGACGATAAGGTTTAA

Protein Sequence: >RC224630 representing NM_001024598
 Red=Cloning site Green=Tags(s)
 MEKRRRARINVSLEQLKSLLEKHYSHQIRKRKLEKADILELSVKYMRSLQNSLQGLWPVPRGAEQPSGFR
 SCLPGVSQLLRRGDEVGSLRCPLVPESAAGSTMDSAGLGQEAPALFRPCTPAVWAPAPAAGGPPSPPL
 LLLPESLPGSSASVPPPQPASSRCAESPLGLRVWRPWGSPGDDLN

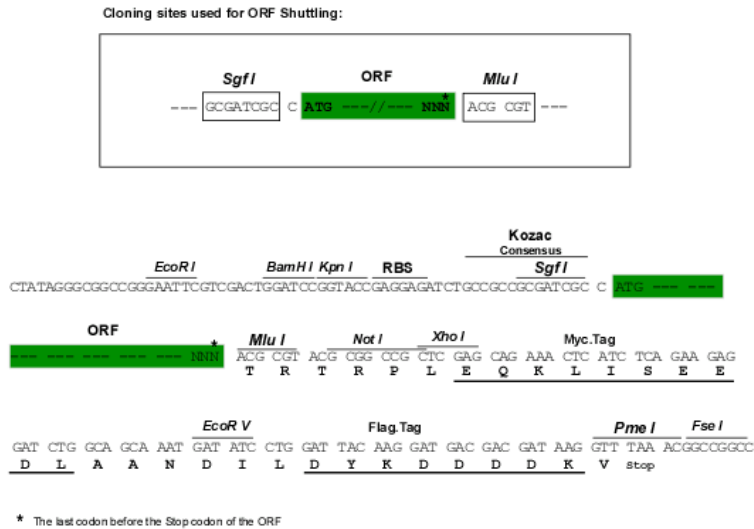
TRTRPLEQKLISEEDLAANDILDYKDDDDKV

Chromatograms: https://cdn.origene.com/chromatograms/mk8045_a11.zip



Restriction Sites: SgfI-MluI

Cloning Scheme:



ACCN: NM_001024598

ORF Size: 558 bp

OTI Disclaimer: The molecular sequence of this clone aligns with the gene accession number as a point of reference only. However, individual transcript sequences of the same gene can differ through naturally occurring variations (e.g. polymorphisms), each with its own valid existence. This clone is substantially in agreement with the reference, but a complete review of all prevailing variants is recommended prior to use. [More info](#)

OTI Annotation: This clone was engineered to express the complete ORF with an expression tag. Expression varies depending on the nature of the gene.

Components: The ORF clone is ion-exchange column purified and shipped in a 2D barcoded Matrix tube containing 10ug of transfection-ready, dried plasmid DNA (reconstitute with 100 ul of water).

Reconstitution Method:

1. Centrifuge at 5,000xg for 5min.
2. Carefully open the tube and add 100ul of sterile water to dissolve the DNA.
3. Close the tube and incubate for 10 minutes at room temperature.
4. Briefly vortex the tube and then do a quick spin (less than 5000xg) to concentrate the liquid at the bottom.
5. Store the suspended plasmid at -20°C. The DNA is stable for at least one year from date of shipping when stored at -20°C.

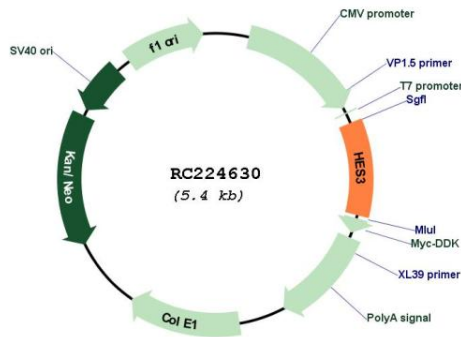
Note: Plasmids are not sterile. For experiments where strict sterility is required, filtration with 0.22um filter is required.

RefSeq: [NM_001024598.4](#)

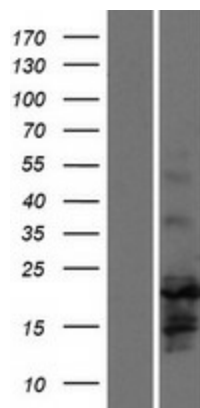
RefSeq Size: 1355 bp

RefSeq ORF: 561 bp

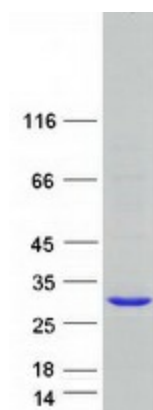
Locus ID: 390992
UniProt ID: [Q5TGS1](#)
Cytogenetics: 1p36.31
MW: 19.8 kDa
Gene Summary: Transcriptional repressor of genes that require a bHLH protein for their transcription. [UniProtKB/Swiss-Prot Function]

Product images:


Circular map for RC224630



Western blot validation of overexpression lysate (Cat# [LY422515]) using anti-DDK antibody (Cat# [TA50011-100]). Left: Cell lysates from untransfected HEK293T cells; Right: Cell lysates from HEK293T cells transfected with RC224630 using transfection reagent MegaTran 2.0 (Cat# [TT210002]).



Coomassie blue staining of purified HES3 protein (Cat# [TP324630]). The protein was produced from HEK293T cells transfected with HES3 cDNA clone (Cat# RC224630) using MegaTran 2.0 (Cat# [TT210002]).