

## Product datasheet for RC224622

### Clathrin light chain (CLTB) (NM\_007097) Human Tagged ORF Clone

#### Product data:

Product Type:	Expression Plasmids
Product Name:	Clathrin light chain (CLTB) (NM_007097) Human Tagged ORF Clone
Tag:	Myc-DDK
Symbol:	Clathrin light chain
Synonyms:	LCB
Mammalian Cell Selection:	Neomycin
Vector:	pCMV6-Entry (PS100001)
E. coli Selection:	Kanamycin (25 ug/mL)
ORF Nucleotide Sequence:	>RC224622 representing NM_007097 Red=Cloning site Blue=ORF Green=Tags(s)

TTTTGTAATACGACTCACTATAGGGCGGCCGGAATTCGTCGACTGGATCCGGTACCGAGGAGATCTGCC  
GCC**CGATCGCC**

ATGGCTGATGACTTTGGCTTCTTCTCGTCGTCGGAGAGCGGTGCCCGGAGGCGGCGGAGGAGGACCCGG  
CGGCCGCCTTCTGGCCAGCAGGAGAGCGAGATTGCAGGCATAGAGAACGACGAGGGCTTCGGGGCACC  
TGCCGGCAGCCATGCGGCCCGCGCAGCCGGGCCACGAGTGGGGCTGGTTCTGAGGACATGGGGACC  
ACAGTCAATGGAGATGTGTTTCAGGAGGCCAACGGTCTGCTGATGGCTACGCAGCCATTGCCAGGCTG  
ACAGGCTGACCCAGGAGCCTGAGAGCATCCGCAAGTGGCGAGAGGAGCAGAGGAAACGGTGCAGAGCT  
GGATGCTGCATCTAAGGTCACGGAACAGGAATGGCGGGAGAAGGCCAAGAAGGACCTGGAGGAGTGGAA  
CAGCGCCAGAGTGAACAAGTAGAGAAGAACAAGATCAACAACCGGATCGCTGACAAAGCATTCTACCAGC  
AGCCAGATGCTGATATCATCGGCTACGTGGCATCCGAGGAGGCTTTCGTGAAGGAATCCAAGGAGGAGAC  
CCCAGGCACAGAGTGGGAGAAGGTGGCCAGCTATGTGACTTCAACCCCAAGAGCAGCAAGCAGTGCAAA  
GATGTGTCCCGCTGCGCTCGGTGCTCATGTCCCTGAAGCAGACGCCACTGTCCCGC

**ACGCGT**ACGCGGCCGCTCGAGCAGAACTCATCTCAGAAGAGGATCTGGCAGCAATGATATCCTGGATT  
ACAAGGATGACGACGATAAGGTTTAA



[View online »](#)

**Protein Sequence:** >RC224622 representing NM\_007097  
Red=Cloning site Green=Tags(s)

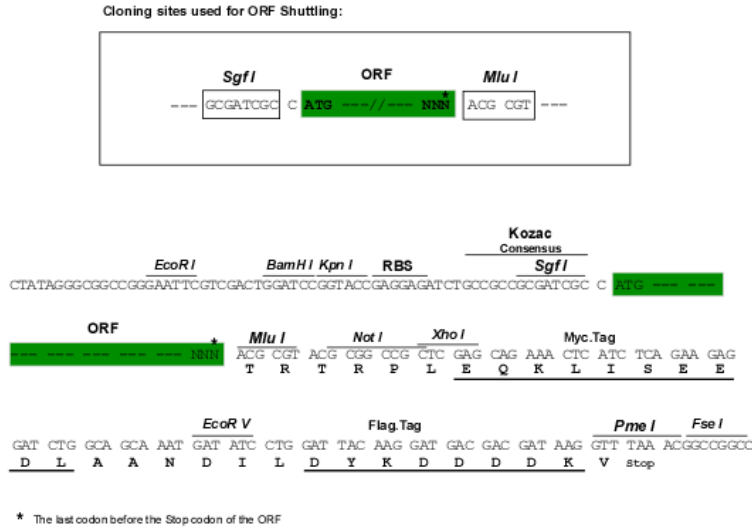
MADDFGFFSSSESGAPEAAEEDPAAAFLAQESEIAGIENDEGFGAPAGSHAAPAQPGPTSGAGSEDMGT  
 TVNGDVFQEANGPADGYAAIAQADRLTQEPESIRKWREEQRKRLQELDAASKVTEQEWREKAKDLEEWN  
 QRQSEQVEKNKINNRIADKAFYQQPDADIIGYVASEEAFVKESKEETPGTEWEKVAQLCDFNPKSSKQCK  
 DVSRLRSVLMMLKQTPLSR

TRTRPLEQKLISEEDLAANDILDYKDDDDKV

**Chromatograms:** [https://cdn.origene.com/chromatograms/mk6475\\_a08.zip](https://cdn.origene.com/chromatograms/mk6475_a08.zip)

**Restriction Sites:** SgfI-MluI

**Cloning Scheme:**



**ACCN:** NM\_007097

**ORF Size:** 687 bp

**OTI Disclaimer:** The molecular sequence of this clone aligns with the gene accession number as a point of reference only. However, individual transcript sequences of the same gene can differ through naturally occurring variations (e.g. polymorphisms), each with its own valid existence. This clone is substantially in agreement with the reference, but a complete review of all prevailing variants is recommended prior to use. [More info](#)

**OTI Annotation:** This clone was engineered to express the complete ORF with an expression tag. Expression varies depending on the nature of the gene.

**Components:** The ORF clone is ion-exchange column purified and shipped in a 2D barcoded Matrix tube containing 10ug of transfection-ready, dried plasmid DNA (reconstitute with 100 ul of water).

**Reconstitution Method:**

1. Centrifuge at 5,000xg for 5min.
2. Carefully open the tube and add 100ul of sterile water to dissolve the DNA.
3. Close the tube and incubate for 10 minutes at room temperature.
4. Briefly vortex the tube and then do a quick spin (less than 5000xg) to concentrate the liquid at the bottom.
5. Store the suspended plasmid at -20°C. The DNA is stable for at least one year from date of shipping when stored at -20°C.

**RefSeq:** [NM\\_007097.5](#)

**RefSeq Size:** 1184 bp

**RefSeq ORF:** 690 bp

**Locus ID:** 1212

**UniProt ID:** [P09497](#)

**Cytogenetics:** 5q35.2

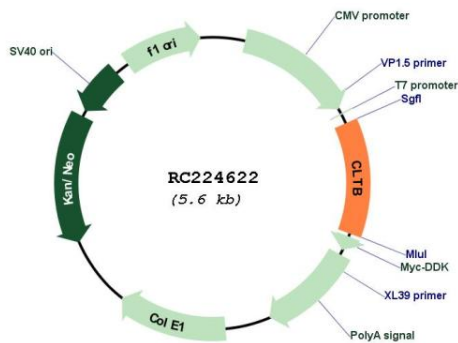
**Domains:** Clathrin\_lg\_ch

**Protein Pathways:** Endocytosis, Huntington's disease, Lysosome

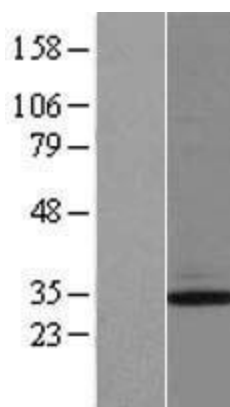
**MW:** 25 kDa

**Gene Summary:** Clathrin is a large, soluble protein composed of heavy and light chains. It functions as the main structural component of the lattice-type cytoplasmic face of coated pits and vesicles which entrap specific macromolecules during receptor-mediated endocytosis. This gene encodes one of two clathrin light chain proteins which are believed to function as regulatory elements. Alternative splicing results in multiple transcript variants. [provided by RefSeq, Jul 2008]

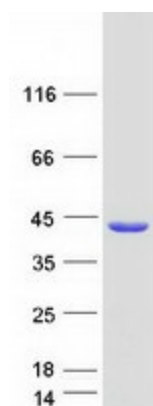
**Product images:**



Circular map for RC224622



Western blot validation of overexpression lysate (Cat# [LY416210]) using anti-DDK antibody (Cat# [TA50011-100]). Left: Cell lysates from untransfected HEK293T cells; Right: Cell lysates from HEK293T cells transfected with RC224622 using transfection reagent MegaTran 2.0 (Cat# [TT210002]).



Coomassie blue staining of purified CLTB protein (Cat# [TP324622]). The protein was produced from HEK293T cells transfected with CLTB cDNA clone (Cat# RC224622) using MegaTran 2.0 (Cat# [TT210002]).