

Product datasheet for RC224617

NT5C1A (NM_032526) Human Tagged ORF Clone

Product data:

Product Type:	Expression Plasmids
Product Name:	NT5C1A (NM_032526) Human Tagged ORF Clone
Tag:	Myc-DDK
Symbol:	NT5C1A
Synonyms:	CN-I; CN-IA; CN1; CN1A; CN1
Mammalian Cell Selection:	Neomycin
Vector:	pCMV6-Entry2 (PS100063)
E. coli Selection:	Kanamycin (25 ug/mL)
ORF Nucleotide Sequence:	>RC224617 representing NM_032526 Red=Cloning site Blue=ORF Green=Tags(s)

TTTTGTAATACGACTCACTATAGGGCGGCCGGAATTCGTCGACTGGATCCGGTACCGAGGAGATCTGCC
GCC**CGATCGCC**

ATGGAACCTGGGCAGCCCGGGAGCCCCAGGAGCCCCGCGAGCCCGGGCCAGGAGCGGAGACCGCTGCGG
CCCCGGTCTGGGAGGAAGCCAAGATTTTCTACGACAACCTCGCGCCAAGAAGAAACCAATCGCCAA
GCCTCAGAATGCAGTCACCATCGCTGTCTCCCGAGCCTTGTTTCGCATGGACGAGGAGCAGCAGATC
TACACGGAGCAGGGCGTGGAGGAGTACGTGCGCTACCAGCTGGAACATGAGAACGAACCCCTCAGTCCCG
GGCCAGCCTTCCCTTTTGTGAAGGCTCTGGAGGCCGTGAACAGGGCGCTGCGGGAGCTGTACCCTGATAG
TGAGGACGCTTCGACATCGTCCCTCATGACTAACAACCATGCTCAAGTGGGTGTCGCCCTCATCAACAGT
ATCAACCACTATGACCTGTTTCATCGAGAGGTTCTGCATGACAGGTGGGAACAGCCGATCTGCTACCTCA
AGGCCTATCACACCAACCTCTACTTGTGACCCGATGCGGAAAAAGTGCAGAAAGCCATTGATGAGGGGAT
CGCAGCTGCCACCATCTCAGCCCCAGCAGGGATGTGGTTGTGTCCCAGAGTCAGCTGCGCGTGGCCCTT
GATGGGGACGCCGTGCTTCTCGGACGAGTCGGAGCGCATCGTCAAGGCCACGGGCTGGACCGATTCT
TCGAGCATGAGAAGGCCACGAGAACAAGCCTCTGGCTCAGGGCCCTTAAAGGGCTTTCTGGAGGCACT
GGGTAGGTTGCAGAAGAAGTTCTACTCCAAAGGCTGCGGCTGGAGTGCCCAATTCGTACCTACTTGGTG
ACAGCAGCAGTGCAGCCAGTTCCGGGGCCGGGCTCTCAAGACCCTGCGCAGCTGGGGCTGGAGACAG
ATGAAGCCTTGTTCCTTGTGGAGCGCCAAGGGCCCTCTCCTTGAGAAGATCCGCCACACATCTTCTT
TGATGACCAGATGTTCCATGTGGCTGGGCTCAGGAGATGGGCACTGTGGCCGCCATGTGCCTTATGGT
GTGGCACAGACCCCCGGCGGACTGCACCTGCAAAGCAGGCCCATCTGCACAG

ACGCGTACGCGGCCGCTCGAGCAGAACTCATCTCAGAAGAGGATCTGGCAGCAATGATATCCTGGATT
ACAAGGATGACGACGATAAGGTTAA



[View online »](#)

Protein Sequence: >RC224617 representing NM_032526
Red=Cloning site Green=Tags(s)

MEPGQPREPQEPREPGGAETAAPVWEEAKIFYDNLAPKKKPKSPKQNAVTVIIVSSRALFRMDEEQI
 YTEQGVVEEYVRYQLEHENEPFSPGPAFPFVKALEAVNRRLRELYPDSDEVFDIVLMTNHAQVGVRLINS
 INHYDLFIERFCMTGGNSPICYLKAYHTNLYLSADAEEKVREAIIDEGIAAATIFSPSRDVVVSQSQRVAF
 DGDVAVLFSDSERIVKAHGLDRFFEHEKAHENKPLAQGPLKGFLEALGRLQKKFYSKGLRLECPRTYLV
 TARSAASSGARALKTLRSWGLETDALFLAGAPKGPILLEKIRPHIFFDDQMFHVAGAQEMGTVAAHVPYQ
 VAQTPRRTAPAKQAPSAQ

TRTRPLEQKLISEEDLAANDILDYKDDDDKV

Chromatograms: https://cdn.origene.com/chromatograms/ja2181_e11.zip

Restriction Sites: SgfI-MluI

Cloning Scheme:



ACCN: NM_032526

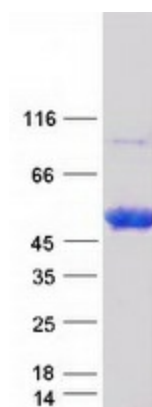
ORF Size: 1104 bp

OTI Disclaimer: Due to the inherent nature of this plasmid, standard methods to replicate additional amounts of DNA in E. coli are highly likely to result in mutations and/or rearrangements. Therefore, OriGene does not guarantee the capability to replicate this plasmid DNA. Additional amounts of DNA can be purchased from OriGene with batch-specific, full-sequence verification at a reduced cost. Please contact our customer care team at custsupport@origene.com or by calling 301.340.3188 option 3 for pricing and delivery.

The molecular sequence of this clone aligns with the gene accession number as a point of reference only. However, individual transcript sequences of the same gene can differ through naturally occurring variations (e.g. polymorphisms), each with its own valid existence. This clone is substantially in agreement with the reference, but a complete review of all prevailing variants is recommended prior to use. [More info](#)

OTI Annotation:	This clone was engineered to express the complete ORF with an expression tag. Expression varies depending on the nature of the gene.
Components:	The ORF clone is ion-exchange column purified and shipped in a 2D barcoded Matrix tube containing 10ug of transfection-ready, dried plasmid DNA (reconstitute with 100 ul of water).
Reconstitution Method:	<ol style="list-style-type: none">1. Centrifuge at 5,000xg for 5min.2. Carefully open the tube and add 100ul of sterile water to dissolve the DNA.3. Close the tube and incubate for 10 minutes at room temperature.4. Briefly vortex the tube and then do a quick spin (less than 5000xg) to concentrate the liquid at the bottom.5. Store the suspended plasmid at -20°C. The DNA is stable for at least one year from date of shipping when stored at -20°C.
RefSeq:	NM_032526.1 , NP_115915.1
RefSeq Size:	1107 bp
RefSeq ORF:	1107 bp
Locus ID:	84618
UniProt ID:	Q9BXI3
Cytogenetics:	1p34.2
Protein Pathways:	Metabolic pathways, Nicotinate and nicotinamide metabolism, Purine metabolism, Pyrimidine metabolism
MW:	41.5 kDa
Gene Summary:	Cytosolic nucleotidases, such as NT5C1A, dephosphorylate nucleoside monophosphates (Hunsucker et al., 2001 [PubMed 11133996]).[supplied by OMIM, Mar 2008]

Product images:



Coomassie blue staining of purified NT5C1A protein (Cat# [TP324617]). The protein was produced from HEK293T cells transfected with NT5C1A cDNA clone (Cat# RC224617) using MegaTran 2.0 (Cat# [TT210002]).