

Product datasheet for RC224616

Ninein (NIN) (NM_016350) Human Tagged ORF Clone

Product data:

Product Type:	Expression Plasmids
Product Name:	Ninein (NIN) (NM_016350) Human Tagged ORF Clone
Tag:	Myc-DDK
Symbol:	Ninein
Synonyms:	SCKL7
Mammalian Cell Selection:	Neomycin
Vector:	pCMV6-Entry (PS100001)
E. coli Selection:	Kanamycin (25 ug/mL)
ORF Nucleotide Sequence:	>RC224616 representing NM_016350 Red=Cloning site Blue=ORF Green=Tags(s)

TTTTGTAATACGACTCACTATAGGGCGGCCGGAATTCGTCGACTGGATCCGGTACCGAGGAGATCTGCC
GCC**CGATCGCC**

ATGGATGAGGTGGAGCAGGACCAGCATGAGGCCGACTCAAGGAGCTGTTTGACAGTTTTGACACGACGG
GCACAGGGTCCCTGGGGCAGGAGGAACACCGACCTTTGCCACATGTTGAGCTTGGAGGAGGTGGCCCC
AGTGCTGCAGCAGACATTACTTCAGGACAACCTTTGGGCAGGGTACATTTTGACCAATTTAAAGAAGCA
TTAATACTCATCTGTCCAGAACTCTGTCAAATGAAGAACAACCTTTCAAGAACCAGACTGCTCACTAGAAG
CTCAGCCCAAATATGTTAGAGGTGGGAAGCGTTACGGACGAAGGTCTTGCCCGAGTTCCAAGAGTCCGT
GGAGGAGTTTCTGAAGTGACGGTGATTGAGCCACTGGATGAAGAAGCGCGGCCTTCACACATCCCAGCC
GGTGACTGCAGTGAGCACTGGAAGACGCAACGCAGTGAGGAGTATGAAGCGGAAGGCCAGTTAAGGTTTT
GGAACCCAGATGACTTGAATGCTTCACAGAGTGGATCTTCCCCTCCCAAGACTGGATAGAAGAGAAACT
GCAAGAAGTTTGTGAAGATTTGGGGATCACCCGTGATGGTCACCTGAACCGGAAGAAGCTGGTCTCCATC
TGTGAGCAGTATGGTTTACAGAAATGTGGATGGAGAGATGCTCGAGGAAGTATCCATAATCTTGATCCTG
ACGGTACAATGAGTGTAGAAGATTTTTCTATGGTTTGTAAAAATGAAAAATCTTTACACCATCAGC
ATCTACTCCATATAGACAACAAAAAGGCACCTTTCCATGCAGTCTTTGATGAGAGTGGACGACGTACC
ACAACCTCATCAGCAATGACAAGTACCATTGGCTTTGGGTCTTCTCCTGCCTGGATGATGGGATGGCC
ATGCATCTGTGGAGAGAATACTGGACACCTGGCAGGAAGAGGGCATTGAGAACAGCCAGGAGATCCTGAA
GGCCTTGATTTGAGCCTCGATGAAAAATCAATTTGACAGAATTAACACTGGCCCTTAAAAATGAACTT
TTGGTTACCAAGAACAGCATTACCAGGCGGCTCTGGCCAGCTTTAAGGCTGAAATCCGGCATTGTTGG
AACGAGTTGATCAGGTGGTCAGAGAAAAAGAGAAGCTACGGTCAGATCTGGACAAGGCCGAGAAGCTCAA
GTCTTTAATGGCCTCGGAGGTGGATGATCACCATGCGGCCATAGAGCGGCGGAATGAGTACAACCTCAGG
AAACTGGATGAAGAGTACAAGGAGCGAATAGCAGCCTTAAAAATGAACTCCGAAAAGAGAGAGAGCAGA
TCCTGCAGCAGGCAGGCAAGCAGCGTTTGAACCTTGAACAGGAAATGAAAAGGCAAAAACAGAAGAGAA
CTATATCCGGGACCGCCTTGCCTCTTTAAAGGAAAACAGTCGCTGGAAAATGAGCTCTAGAAAAT



[View online »](#)

GCAGAGAAGTTGGCAGAATATGAGAATCTGACAAACAACTTCAGAGAAATTTGGAAAATGTGTTAGCAG
 AAAAGTTTGGTGACCTCGATCCTAGCAGTGTGAGTTCTTCTGCAAGAAGAGAGACTGACACAGATGAG
 AAATGAATATGAGCGGCAGTGCAGGGTACTACAAGACCAAGTAGATGAACTCCAGTCTGAGCTGGAAGAA
 TATCGTGACAAGGCAGAGTGTCTCAGGCTCCGTTGAAGAATCACCGTCAGAAGAAGTTGAGGCTAACAA
 GCGGTGGCATTGAGCCGAACACGGGCTCGGTTCTGAAGAATGCAATCCATTGAATATGAGCATTGAGGC
 AGAGCTGGTCATTGAACAGATGAAAGAACAACATCACAGGGACATATGTTGCCTCAGACTGGAGCTCGAA
 GATAAAGTGCGCCATTATGAAAAGCAGCTGGACGAAACCGTGGTCAGCTGCAAGAAGGCACAGGGAACA
 TGAAAGCAAAGGCATGAGAACGAAACGCACACCTTAGAAAAACAAATAAGTGACCTTAAAAATGAAATTGC
 TGAACCTCAGGGGCAAGCAGCAGTGCTCAAGGAGGCACATCATGAGGCCACTGCAGGCATGAGGAGGAG
 AAAAAACAACTGCAAGTGAAGCTTGAGGAGGAAAAGACTCACCTGCAGGAGAAGCTGAGGCTGCAACATG
 AGATGGAGCTCAAGGCTAGACTGACACAGGCTCAAGCAAGCTTTGAGCGGAGAGGGAAGGCCTTCAGAG
 TAGCGCTGGACAGAAGAGAAGGTGAGAGGCTTACTCAGGAAGTACAGCAGTTTACCAGGAGCAGCTG
 ACAAGCCTGGTGGAGAAACACACTCTTGAGAAAGAGGAGTTAAGAAAAGAGCTCTGGAAAAGCACAAA
 GGGAGCTTCAGGAGGGAAGATATGAATCTGAAAAGCTTCAACAGGAAAAATCTATTTTGAGAAATGAAAT
 TACTACTTTAAATGAAGAAGATAGCATTCTAACCTGAAATTAGGGACATTAAATGGATCTCAGGAAGAA
 ATGTGGCAAAAAACGAAACTGTAAAACAGAAAATGCTGCAGTTCAGAAGATGGTTGAAAATTTAAGA
 AACAGATTTTCAAGATTTAAAAATCAAAAACCAACAAATTGGATTTGAAAATACAGAAGTTAGCCAAAAAGAA
 CTCTCAAAACCAGGAAAAACTGCAAGAAGTTAATCAACGTCTAACAGAAATGCTATGCCAGAAGGAAAA
 GAGCCAGGAAACAGTGCATTGGAGGAACGGGAACAAGAGAAGTTAATCTGAAAGAAGAACTGGAACGTT
 GTAAGTGCAGTCTCCACTTTAGTGTCTTCTCTGGAGGCGGAGCTCTCTGAAGTTAAAAACAGACCCA
 TATTGTGAACAGGAAAACACCTTCTCAAAGTGAAGTGGAGAAAATGAAACAGCTGCACAGATGTCCC
 GATCTCTGACTTCCAGCAAAAAATCTCTAGTGTCTAAGCTACAACGAAAAACTGCTGAAAGAAAAGG
 AAGCTCTGAGTGAGGAATTAATAGCTGTGTCGATAAGTTGGCAAAATCAAGTCTTTAGAGCATAGAAT
 TGGCAGCATGAAGCAGGAACAGAAATCCTGGGAACATCAGAGTGGCAGCTTAAAGTCACAGCTGGTGGCT
 TCTCAGGAAAAGTTTCAAGATTTAGAAGACACCGTGCAGAAATGTAACCTGCAAAATGTCCCGGATGAAAT
 CTGACCTACGAGTACTCAGCAGGAAAAGGAGGCTTTAAAACAAGAAGTATGATGCTTTACATAAGCAACT
 TCAGAATGCTGGTGGCAAGAGCTGGGCCCCAGAGATAGCTACTCATCCATCAGGGCTCCATAACCAGCAG
 AAAAGGCTGTCTGGGACAAGTTGGATCATCTGATGAATGAGGAACAGCAGCTGCTTTGGCAAGAGAATG
 AGAGGCTCCAGACCATGGTACAGAACACCAAAGCCGAAGTACGCACTCCCGGAGAAAGTCCGTCAGTT
 GGAATCCAATCTTCTTCCAAGCACAAAAACATCTAAACCCATCAGGTACCATGAATCCCACAGAGCAA
 GAAAAATTGAGCTTAAAGAGAGAGTGTGATCAGTTTCAGAAAGAACAATCTCCTGCTAACAGGAAGGTCA
 GTCAGATGAATCCCTTGAACAAGAATTAGAAACAATTCAATTTGGAAAATGAAGGCTGAAAAAGAAACA
 AGTAAAAGTGGATGAGCAGCTCATGGAGATGCAGCACCTGAGGTCCACTGCGACGCTAGCCCGTCCCT
 CATGCTTGGGATTTGAGCTGCTCCAGCAGCAAGCCTGTCCGATGGTGCCAGGGAGCAGTTTCTGCAGC
 TTCAACGCCAGCTGCTGCAGGCAGAAAGGATAAACCAGCACCTGCAGGAGGAACTTGAAAACAGGACCTC
 CGAAACCAACACACCAGGAAACAGGAAACAACTGGTAACTGTGATGGAGGAACGAATGATAGAAGTT
 GAACAGAACTGAACTAGTAAAAGGCTTCTTCAAGAGAAAGTGAATCAGCTCAAGAACAAGTGAAGCC
 TACCCGGTCATCTCTGTTCAACCCACTCACATTCCAGCTTAACTCCAGTTTTACATCCCTTTATTGCCA
 T

ACGCGTACGCGGCCGCTCGAGCAGAACTCATCTCAGAAGAGGATCTGGCAGCAATGATATCCTGGATT
 ACAAGGATGACGACGATAAGGTTTAA

Protein Sequence: >RC224616 representing NM_016350
 Red=Cloning site Green=Tags(s)

MDEVEQDQHEARLKELFDSFDTTGTGSLGQEELTDLCHMLSLEEVAPVLQQTLLQDNLLGRVHFDQFKEA
 LILILSRTL SNEEHFQEPDCSLEAQPKYVRGGKRYGRRSLPEFQESVEEFPEVTVIEPLDEEARSHIPA
 GDCSEHWKTQRSEEYEAEGQLRFWNPDDLNASQSGSSPPQDWIEEKLQEVCELDGITRDGHLNRKKLVSI
 CEQYGLQNVGDGEMLEEVFHNLDPDGTMSVEDFFYGLFKNGKSLTPSASTPYRQLKRHLSMQSFDESGRRT
 TTSSAMTSTIGFRVFSCLDDGMGHASVERILDWQEEGIENSQEI LKALDFSLDGNINLTELTLALENEL
 LVTKNSIHQAALASFKAIEIRHLLERVDQVREKEKLRSDLDKAEKLSLMASEVDDHHAATERRNEYNLR
 KLDEEYKERIAALKNELRKEREQILQQAGKQRLELEQEIEKAKTEENYIRDRLALSLKENSRLNELLN
 AEKLAEYENLTNKLQRNLENLVAEKFGDLDPSSAEFFLQEERLTQMRNEYERQCRVLQDQVDELQSELEE
 YRAQGRVLRPLKNPSEEVEANSGGIEPEHGLGSEECNPLNMSIEAELVIEQMKEQHHRDICCLRLELE
 DKVRHYEKQLDETVVSCKAQENMKQRHENETHLEKQISDLKNEIAELQGQAAVLKEAHHEATCRHEEE
 KKQLQVKLEEEKTHLQEKLRLEHEMELKARLTQAQASFEREREGLSAWTEEKVRGLTQELEQFHQEQ
 TSLVEKHTLEKEELRKELEKHKRELQEGRYESEKLQEQNSILRNEITTLNEEDSISNLKLGTLNGSQEE
 MWQKTETVKQENAAVQKMVENLKKQISELKIKNQQLDLENTELSQKNSQNEKQLQELNQRLTEMLCQKEK
 EPGNSALEEREQEFNLKEELERCKVQSSTLVSSLEAELSEVKIQTHIVQQENHLLKDELEKMKQLHRCP
 DLSDFQQKISSVLSYNEKLLKEKEALSEELNSCVDKLAKSSLLEHRIATMKQEQSWEHQASLSQLVA
 SQEKVQNL EDTVQNVNLQMSRMKSDLRVTQQEKEALKQEVMSLHKQLQNAAGGKSWAPEIATHPSGLHNQQ
 KRLSWDKLDHLMNEEQQLLWQENERLQTMVQNTKAELTHSREKVRQLESNLLPKHQKHLNPSGTMNPTEQ
 EKL SLKRECDQFQKEQSPANRKYVQMSLEQELETIHLENEGLKKKQVKLDEQLMEMQHLRSTATPSPSP
 HAWDLQLLQQQACPMVPREQFLQLQRQLQAERINQHLQEELNRTSETNTPQGNQEQLVTVMEERMIEV
 EQKLLVKRLLQEKVNQLKEQVSLPGHLCSPSSHSSFNSSFTSLYCH

TRTRPLEQKLISEEDLAANDILDYKDDDDKV

Restriction Sites:

SgfI-MluI

Cloning Scheme:



ACCN: NM_016350

ORF Size: 4131 bp

OTI Disclaimer: Due to the inherent nature of this plasmid, standard methods to replicate additional amounts of DNA in E. coli are highly likely to result in mutations and/or rearrangements. Therefore, OriGene does not guarantee the capability to replicate this plasmid DNA. Additional amounts of DNA can be purchased from OriGene with batch-specific, full-sequence verification at a reduced cost. Please contact our customer care team at custsupport@origene.com or by calling 301.340.3188 option 3 for pricing and delivery.

The molecular sequence of this clone aligns with the gene accession number as a point of reference only. However, individual transcript sequences of the same gene can differ through naturally occurring variations (e.g. polymorphisms), each with its own valid existence. This clone is substantially in agreement with the reference, but a complete review of all prevailing variants is recommended prior to use. [More info](#)

OTI Annotation: This clone was engineered to express the complete ORF with an expression tag. Expression varies depending on the nature of the gene.

Components: The ORF clone is ion-exchange column purified and shipped in a 2D barcoded Matrix tube containing 10ug of transfection-ready, dried plasmid DNA (reconstitute with 100 ul of water).

Reconstitution Method:

1. Centrifuge at 5,000xg for 5min.
2. Carefully open the tube and add 100ul of sterile water to dissolve the DNA.
3. Close the tube and incubate for 10 minutes at room temperature.
4. Briefly vortex the tube and then do a quick spin (less than 5000xg) to concentrate the liquid at the bottom.
5. Store the suspended plasmid at -20°C. The DNA is stable for at least one year from date of shipping when stored at -20°C.

RefSeq: [NM_016350.4](#), [NP_057434.4](#)

RefSeq Size: 4388 bp

RefSeq ORF: 4134 bp

Locus ID: 51199

UniProt ID: [Q8N4C6](#)

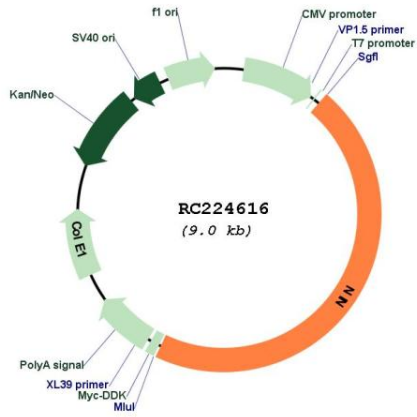
Cytogenetics: 14q22.1

Domains: M

MW: 160.1 kDa

Gene Summary: This gene encodes one of the proteins important for centrosomal function. This protein is important for positioning and anchoring the microtubules minus-ends in epithelial cells. Localization of this protein to the centrosome requires three leucine zippers in the central coiled-coil domain. Multiple alternatively spliced transcript variants that encode different isoforms have been reported. [provided by RefSeq, Jul 2008]

Product images:



Circular map for RC224616