

Product datasheet for **RC224614**

RASSF3 (NM_178169) Human Tagged ORF Clone

Product data:

Product Type:	Expression Plasmids
Product Name:	RASSF3 (NM_178169) Human Tagged ORF Clone
Tag:	Myc-DDK
Symbol:	RASSF3
Synonyms:	RASSF5
Mammalian Cell Selection:	Neomycin
Vector:	pCMV6-Entry (PS100001)
E. coli Selection:	Kanamycin (25 ug/mL)
ORF Nucleotide Sequence:	>RC224614 ORF sequence Red=Cloning site Blue=ORF Green=Tags(s)

TTTTGTAATACGACTCACTATAGGGCGGCCGGAATTCGTCGACTGGATCCGGTACCGAGGAGATCTGCCGCC**CGATCGCC**

ATGAGCAGCGGCTACAGCAGCCTGGAGGAGGACGCCGAGGACTTCTTCTCACCGCCAGGACCTCCTTCTCAGGAGAGCGCCCCAGGGCAAGCCCCGCTCCGGCCAACAAGATGTTGAGAAAGAGAAGGAAACCCACAGTTACCTCAGCAAAGAGGAGATCAAAGAGAAAGTTCATAAATACTTAGCAGTCACAGACAAGTTGAAGATGACCTTGAATTCAAATGGGATTTACTACTGGCTTCATTAAGTACAGATGGAACCTGCAAACCTCCACAGACTTCCAAATCTGGAAACTCTCTCCAGTAGCAATGGCTGTATGAATACACTTCATATCAGCAGCACAAACTGTGCGGGAAGTGATCGAGGCCCTGCTCAAAAAGTTTCTCGTGACTGAGAGCCCTGCCAAGTTTGCACTTTATAAGCGTTGTCACAGGGAAGACCAAGTCTACGCCTGCAAGCTCTCAGACCGGGAACATCACTCTACCTGCGTTTGGTAGCAGGGCCGAGAACAGACACTTAGTTTTGTTCTTCGTGAACATGAAATGGAGAGTGGGAAGCCTTCAGCCTCCAGAACTACAGAAATTTCTTGCGCATCTTGACAAGGAAGAAGATGAACAGCTGCAGAACCTGAAGAGGCGCTACACAGCCTACAGGCAGAAAGCTGGAAGAAGCCCTCCGTGAGGTGTGAAGCCTGAT

ACGCGTACGCGGCCGCTCGAGCAGAACTCATCTCAGAAGAGGATCTGGCAGCAAATGATATCCTGGATTACAAGGATGACGACGATAAGGTTTAA



[View online »](#)

Protein Sequence: >RC224614 protein sequence
Red=Cloning site Green=Tags(s)

MSSGYSSLEEDAEDFFFTARTSFRRAPQGKPRSGQQDVEKEKETHSYLSKEEIKEKVHKYNLAVTDKLL
 MTLNSNGIYTGFIKVQMECLKPPQTSPNSGKLSPPSNGCMNTLHISSTNTVGEVIEALLKKFLVTEPAK
 FALYKRCHREDQYYACKLSDREHPLYRLVAGPRTDTLFSFVLRHEIGEWAFSLPELQNFLRILDKEED
 EQLQNLKRRYTAYRQKLEELREVWKP

TRTRPLEQKLISEEDLAANDILDYKDDDDKV

Chromatograms: https://cdn.origene.com/chromatograms/mk6449_a09.zip

Restriction Sites: SgfI-MluI

Cloning Scheme:

Cloning sites used for ORF Shuttling:



* The last codon before the Stop codon of the ORF

ACCN: NM_178169

ORF Size: 714 bp

OTI Disclaimer: The molecular sequence of this clone aligns with the gene accession number as a point of reference only. However, individual transcript sequences of the same gene can differ through naturally occurring variations (e.g. polymorphisms), each with its own valid existence. This clone is substantially in agreement with the reference, but a complete review of all prevailing variants is recommended prior to use. [More info](#)

OTI Annotation: This clone was engineered to express the complete ORF with an expression tag. Expression varies depending on the nature of the gene.

Components: The ORF clone is ion-exchange column purified and shipped in a 2D barcoded Matrix tube containing 10ug of transfection-ready, dried plasmid DNA (reconstitute with 100 ul of water).

Reconstitution Method:

1. Centrifuge at 5,000xg for 5min.
2. Carefully open the tube and add 100ul of sterile water to dissolve the DNA.
3. Close the tube and incubate for 10 minutes at room temperature.
4. Briefly vortex the tube and then do a quick spin (less than 5000xg) to concentrate the liquid at the bottom.
5. Store the suspended plasmid at -20°C. The DNA is stable for at least one year from date of shipping when stored at -20°C.

RefSeq: [NM_178169.4](#)

RefSeq Size: 3492 bp

RefSeq ORF: 717 bp

Locus ID: 283349

UniProt ID: [Q86WH2](#)

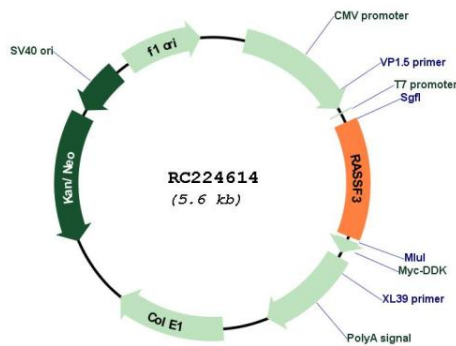
Cytogenetics: 12q14.2

Protein Families: Druggable Genome

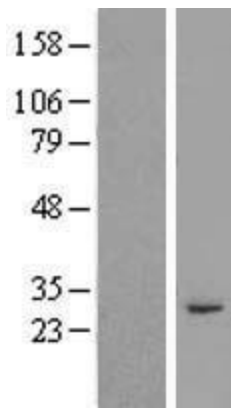
MW: 27.6 kDa

Gene Summary: The RAS oncogene (MIM 190020) is mutated in nearly one-third of all human cancers. Members of the RAS superfamily are plasma membrane GTP-binding proteins that modulate intracellular signal transduction pathways. A subfamily of RAS effectors, including RASSF3, share a RAS association (RA) domain.[supplied by OMIM, Jul 2003]

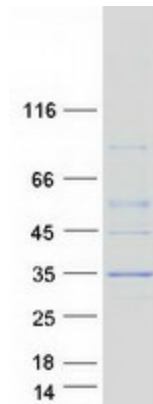
Product images:



Circular map for RC224614



Western blot validation of overexpression lysate (Cat# [LY406009]) using anti-DDK antibody (Cat# [TA50011-100]). Left: Cell lysates from untransfected HEK293T cells; Right: Cell lysates from HEK293T cells transfected with RC224614 using transfection reagent MegaTran 2.0 (Cat# [TT210002]).



Coomassie blue staining of purified RASSF3 protein (Cat# [TP324614]). The protein was produced from HEK293T cells transfected with RASSF3 cDNA clone (Cat# RC224614) using MegaTran 2.0 (Cat# [TT210002]).