

Product datasheet for **RC224604**

Kv2.2 (KCNB2) (NM_004770) Human Tagged ORF Clone

Product data:

Product Type:	Expression Plasmids
Product Name:	Kv2.2 (KCNB2) (NM_004770) Human Tagged ORF Clone
Tag:	Myc-DDK
Symbol:	Kv2.2
Synonyms:	KV2.2
Mammalian Cell Selection:	Neomycin
Vector:	pCMV6-Entry (PS100001)
E. coli Selection:	Kanamycin (25 ug/mL)



[View online »](#)

ORF Nucleotide Sequence:

>RC224604 representing NM_004770
 Red=Cloning site Blue=ORF Green=Tags(s)

TTTTGTAATACGACTCACTATAGGGCGGCCGGGAATTCGTCGACTGGATCCGGTACCGAGGAGATCTGCC
 GCC**CGGATCGCC**

ATGGCAGAAAAGGCTCCCCGGGCTTAAACAGGAAGACTTCAAGTGCACACTTTCCTTCTCCAGAGC
 CTGTGGACATTATCCGGAGCAAAACATGCTCCAGGAGAGTTAAGATCAATGTGGGGGCCTCAACCACGA
 AGTCTGTGGAGAACGCTGGACAGGCTGCCAGGACGCGCCTGGGGAAGCTTCGAGACTGCAACACACAC
 GAGAGCCTCCTGGAAGTGTGCGACGACTATAATCTGAACGAGAACGAGTATTTCTTTGATCGGCATCCAG
 GAGCCTTCACTTCCATTTAAATTTCTACCGACCAGGAACTCCATATGATGGAAGAAATGTGTGCACT
 TTCGTTTGGCCAAGAACTTGATTACTGGGGATTGATGAGATCTACTGGAGTCTGTGCCAGGCCAGA
 TATCATCAAAAAAAGAACAATGAACGAAGAAGTGGGCGAGAGGCAGAGACTATGCGAGAGCGAGAAG
 GAGAAGAGTTGATAATACCTGCTGCCCTGATAAAAGGAAGAACTGTGGGACTTGTGGAGAACTTAA
 CTCATCAGTGGCTGCAAAGATCCTGGCCATCGTGTCTATCCTGTTCAATTGTGCTTCCACCATTGCTTTG
 TCTCTCAATACGCTGCCGAGCTGCAGGAAACGGACGAATTTGGACAACCAATGACAACCGCCAATTAG
 CACACGTGGAGGCTGTGTATTGCATGGTTTACCATGGAGTACCTTTTGGCATTCTTATCTCACCAAAA
 TAAATGGAAGTCTTCAAAGGCCCACTGAATGTCATTGATTTGCTGGCCATCTTGCCGACTATGTCACC
 ATTTTTCTGACGGAGTCCAACAAGAGCGTGTGCAGTTCCAAAACGTGAGGCGCGTGGTCCAGATCTTCC
 GAATCATGCGCATCCTCAGGATCCTGAAACTCGCCAGGCATTGACAGGCCTGCAGTCTCTGGGTTTAC
 CCTTAGGCGGAGTTACAATGAATGGGCTTGTGATATTGTTTCTGGCCATGGGGATAATGATATTTTCC
 AGCCTGGTATTTTTGCTGAGAAGGATGAAGATGCTACCAAGTTCACCAGTATCCCTGCATCAATTTGGT
 GGGCCACCATCACCATGACCAGTGTGGCTATGGTGACATTTACCCTAAAACATTACTAGGAAAATTTGT
 GGGAGGCTGTGCTGTATTGCTGGGGTTCTGGTTATTGCCCTTCTATCCCAATTTATTGGAACAATTTT
 TCTGAGTTTTACAAGGAGCAGAAACGCCAAGAGAAAGCAATTAAGGAGGGAGGCTCTTGGAGCGGCCA
 AAAGGAACGGAAGCATCGTTTCTATGAACTTAAAAGATGCCTTCGCTCGAAGTATGGAAGTATAGATGT
 GGCTGTTGAGAAGGCCGGAGAGTCCGCCAACACAAAGGACTCCGCCGACGATAATCACCTGTCGCCAAGC
 CGGTGGAAGTGGCCAGGAAGGCTCTGTGGAACAAGCTCCAACAAGTCTTTCGAGAATAAGTACCAGG
 AGGTTAGCAAAAAGACTCCCACGAGCAGTGAACAACACGTCTTCTCCAGCCACAGCATCTGAGTGC
 CCAGAAACTGGAGATGCTATACAATGAAATCACCAGACACAGCCTCATTCTACCCAAACCCAGACTGC
 CAAGAAAAGCCTGAGAGGCCATCTGCATATGAAGAAGAGATTGAAATGGAAGAAGTGGTGTGCCACAGG
 AGCAGCTGGCCGTGGCACAGACCGAGGTATTGTGGACATGAAGAGCACCTCCAGCATCGACAGCTTCCAC
 CAGCTGTGCCACCGACTTCACAGAGACAGAGAGATCGCCGCTGCCGCCGCCCTCCGCCTCTCACTTGCAG
 ATGAAGTTCCTCAACCGACCTCCCAGGGACAGAAGAGCACCAAGAGCTAGGGGCCCCCGTTTCTAACTC
 TATCCAGAGAGAAAGGACCTGCTGCCAGGGATGGCACGCTGGAGTATGCCCCAGTTGACATAACTGTGAA
 CCTCGATGCCAGTGGCTCCCAGTGTGGGTACATAGTCTTTGCACTGACAAATGCCACCGACAGTCTCT
 AAGAGCTCTCTAAAAGGCAGCAACCCACTAAAGTCCAGATCCCTCAAAGTGAACCTTAAGGAAAATAGAG
 GCAGTGCACCACAGACCCCGCCAGCACAGCCAGGCCACTGCCAGTCAACACAGCTGACTTTTCGCTCAC
 TACCCCGCAGCACATCAGTACCATCCTCTTAGAAGAAACCCCTCCAGGGAGACAGACCCTTGTGGGC
 ACTGAGGTTTTCAGCGCCTTGTGAGGACCTTCCAAAGGGCTGTCCCCAGGTTTCCCAAGCAGAACTGT
 TCCTTTCTCTTCAAGAGAGAGGAGGAGCTTCACTGAAATAGATACTGGTGCAGCAGAAAGACTTCTTAGA
 GCTCCCAGGGCAAGGGAGGAGAAGCAGGTGGACTCCAGCCAAATGCTTTGCAGATAAGCCTAGTGAT
 GGGAGAGACCTTTAAGAGAAGAGGGCAGTGTGGGCTCTTCTCCCGCAGGACACAGGTCACTGTA
 GGCAAGACATTTACCATGCTGTGAGTGAAGTCAAAAAGGACAGTGTCAAGAAGGGTGAAGATGGAAAA
 TCACCTGTTTGGCCAGAAATTCATTCCAACCCAGGAGACACAGGTTATTGTCCACACGTGAAACCAGC
 ATG

ACGCGTACGCGGCCGCTCGAGCAGAAACTCATCTCAGAAGAGGATCTGGCAGCAAATGATATCCTGGATT
 ACAAGGATGACGACGATAAGGTTTAA

Protein Sequence: >RC224604 representing NM_004770
 Red=Cloning site Green=Tags(s)

```

MAEKAPPGLNRKTSRSTLSLPPEPVDIIRSKTCSRVRKINVGGLNHEVLWRTLDRLPRTLGLKLRDCNTH
ESLLEVCDDYNLNENEYFFDRHPGAFSTILNFYRTGKLHMMEEMCALSFGQELDYWGIDEIYLESCCQAR
YHQKKEQMNEELRREAETMREREGEEFDNTCCPDKRKKLWDLLEKPNSSVAAKILAIVSILFIVLSTIAL
SLNLTPELQETDEFGLNDNRQLAHVEAVCIAWFMEYLLRFLSSPNKWKFFKGPLNVIDLLAILPYYVT
IFLTESNKSVLQFQNVRRVVIIFRIMRILRILKLARHSTGLQSLGFTLRRSYNELGLLILFLAMGIMIFS
SLVFFAEKDEDATKFTSIPASFWWATITMTTVGYGDIYPKTLLGKIVGGLCCAGVLIPIIIVNNF
SEFYKEQKRQEKAIKRREALERAKRNGSIVSMNLKDAFARSMELIDVAVEKAGESANTKDSADDNHLSPS
RWKWARDALSETSSNKSFENKYQEVSQKDSHEQLNNTSSSPQHLAQKLEMLYNEITKTPHSHPNPDC
QEKPERPSAYEEEEIEMEEVVCPEQLAVAQTEIVDMKSTSSIDSFTSCATDFTETERSPLPPPSASHLQ
MKFPTDLPGTEEHQRARGPPFLTLSREKGAARDGTLEYAPVDITVNLDSGSGCGLHSPLQSDNATDSP
KSSLKGSNPLKSRSLKVNFKENRGSAPQTPPSTARPLPVTTADFSLTTPQHISTILLEETPSQGDRLG
TEVSAPCQGPSKGLSPRFPKQKLPFSSRERRSFTEIDTGDDEFLELPGAREEKQVDSSPNCFAFKPSD
GRDPLREEGVSQSSSPQDTGHNCRQDIYHAVSEVKKDSSQEGCKMENHLFAPEIHSNPGDGYCPTRETS
M
    
```

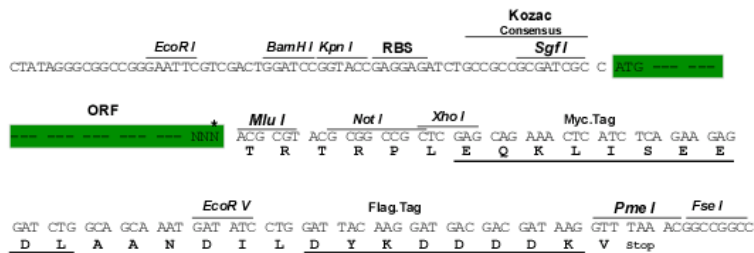
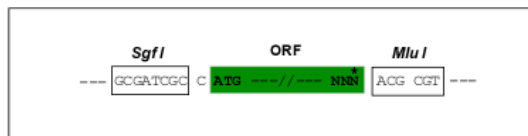
TRTRPLEQKLISEEDLAANDILDYKDDDDKV

Restriction Sites:

SgfI-MluI

Cloning Scheme:

Cloning sites used for ORF Shuttling:



* The last codon before the Stop codon of the ORF

ACCN: NM_004770

ORF Size: 2733 bp

OTI Disclaimer: Due to the inherent nature of this plasmid, standard methods to replicate additional amounts of DNA in E. coli are highly likely to result in mutations and/or rearrangements. Therefore, OriGene does not guarantee the capability to replicate this plasmid DNA. Additional amounts of DNA can be purchased from OriGene with batch-specific, full-sequence verification at a reduced cost. Please contact our customer care team at custsupport@origene.com or by calling 301.340.3188 option 3 for pricing and delivery.

The molecular sequence of this clone aligns with the gene accession number as a point of reference only. However, individual transcript sequences of the same gene can differ through naturally occurring variations (e.g. polymorphisms), each with its own valid existence. This clone is substantially in agreement with the reference, but a complete review of all prevailing variants is recommended prior to use. [More info](#)

OTI Annotation: This clone was engineered to express the complete ORF with an expression tag. Expression varies depending on the nature of the gene.

Components: The ORF clone is ion-exchange column purified and shipped in a 2D barcoded Matrix tube containing 10ug of transfection-ready, dried plasmid DNA (reconstitute with 100 ul of water).

Reconstitution Method:

1. Centrifuge at 5,000xg for 5min.
2. Carefully open the tube and add 100ul of sterile water to dissolve the DNA.
3. Close the tube and incubate for 10 minutes at room temperature.
4. Briefly vortex the tube and then do a quick spin (less than 5000xg) to concentrate the liquid at the bottom.
5. Store the suspended plasmid at -20°C. The DNA is stable for at least one year from date of shipping when stored at -20°C.

RefSeq: [NM_004770.3](#)

RefSeq Size: 3597 bp

RefSeq ORF: 2736 bp

Locus ID: 9312

UniProt ID: [Q92953](#)

Cytogenetics: 8q21.11

Domains: BTB, K_tetra, Kv2channel, ion_trans

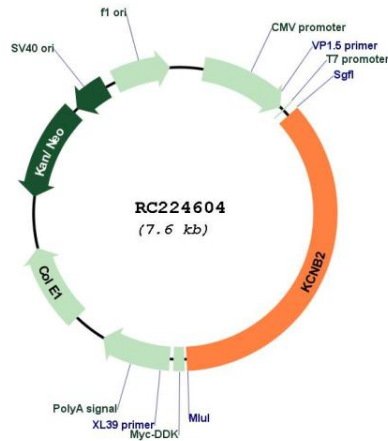
Protein Families: Druggable Genome, Transmembrane

MW: 102.4 kDa

Gene Summary:

Voltage-gated potassium (Kv) channels represent the most complex class of voltage-gated ion channels from both functional and structural standpoints. Their diverse functions include regulating neurotransmitter release, heart rate, insulin secretion, neuronal excitability, epithelial electrolyte transport, smooth muscle contraction, and cell volume. Four sequence-related potassium channel genes - shaker, shaw, shab, and shal - have been identified in *Drosophila*, and each has been shown to have human homolog(s). This gene encodes a member of the potassium channel, voltage-gated, shab-related subfamily. This member is a delayed rectifier potassium channel. The gene is expressed in gastrointestinal smooth muscle cells. [provided by RefSeq, Jul 2008]

Product images:



Circular map for RC224604