

## Product datasheet for **RC224586**

### USP4 (NM\_003363) Human Tagged ORF Clone

#### Product data:

Product Type:	Expression Plasmids
Product Name:	USP4 (NM_003363) Human Tagged ORF Clone
Tag:	Myc-DDK
Symbol:	USP4
Synonyms:	UNP; Unph
Mammalian Cell Selection:	Neomycin
Vector:	pCMV6-Entry (PS100001)
E. coli Selection:	Kanamycin (25 ug/mL)



[View online »](#)

**ORF Nucleotide Sequence:**

>RC224586 representing NM\_003363  
 Red=Cloning site Blue=ORF Green=Tags(s)

TTTTGTAATACGACTCACTATAGGGCGGCCGGAATTCGTCGACTGGATCCGGTACCGAGGAGATCTGCC  
 GCC**CGCATCGCC**

ATGGCGGAAGGTGGAGGCTGCCGTGAGCGACCGGATGCGGAGACTCAGAAGTCCGAGCTTGACCCTTAA  
 TGAGACCACACTCCAACGCGGGGCGCAGTGGTATCTTATTGACAGCCGGTGGTTCAAGCAGTGGAAAGAA  
 GTATGTGGGCTTTGACAGCTGGGACATGTACAATGTGGGTGAACATAACCTATTTCTGGCCCAATAGAC  
 AACTCTGGGCTATTTTCAGATCCTGAGAGTCAGACCTTAAAAGAACAACCTAATTGATGAATTGGACTATG  
 TATTGGTCCCTACCGAGGCGTGAATAAACTACTAACTGGTACGGCTGTGTAGAAGGCCAGCAACCCAT  
 CGTCAGAAAAGTTGTGGAGCATGGCCTGTTTGTCAAGCACTGCAAAGTCGAGGTGATTTTGTGAACTG  
 AAGCTCTGTGAGAACAGTGACCCACCAATGTGCTGAGTTGCCATTTTCAGCAAGGCAGACACCATTGCAA  
 CCATCGAGAAAGAGATGCGGAAGCTATTCAACATCCCTGCGGAGCGTAAAACACGGCTCTGGAACAATA  
 CATGAGCAACACCTACGAGCAGTTGAGCAAAGTACGACAACACTGTCCAGGATGCTGGGCTATACCGGGT  
 CAGGTGCTAGTAATTGAGCCTCAAAATGAAGATGGCACATGGCCAGGCAGACCTTGCAAGTCAAAATCAA  
 GCACTGCGCCTAGCAGAAATTTTACTACCTCTCAAAATCATCAGCAAGTCCCTATTTCTCAGTGTCTGC  
 CTCTCTCATTGCAAAATGGTATAGCACTAGCACCTGTGGGATGCACAGTTCGGTGTGAGGAGGGTGGAA  
 TCTGGCTTTTCTGCTTCTATAATTGTCAAGGAGCCACCCTCTCTCATATAACAACCTGGGCTCTGTGGAC  
 TTGAAACCTGGGAAACACCTGCTTCATGAACTCCGCTTTGCAGTGTGTTGAGCAACACTGCACCACTGAC  
 TGACTACTTTCTCAAAGATGAGTATGAAGCCGAAATCAACAGAGACAACCCCTCTGGGGATGAAAGGGGAA  
 ATTGCAAGAGCCTATGCTGAACCTAATTAAGCAGATGTGGTCTGGAAGGGATGCCATGTGGCACCCTCGCA  
 GTTCAAAACTCAAGTAGGACCTTTTGTCTCAATTTTCTGGCTACCAGCAACAAGATTTCTCAGGAGCT  
 GCTGGCCTTTCTTAGATGGATTGCATGAAGATCTGAACCGGGTAAAGAAAAAGCCTACTTGGAGCTG  
 AAGGATGCCAATGGGCGGCCAGATGCGGTGGTGGCAAAGGAAGCCTGGGAGAATCACAGGTTGAGGAATG  
 ATTCTGTGATTGTGGATACTTTCCATGGCCTCTTCAAATCTACTTTGGTTTGGCCAGAATGTGCTAAGGT  
 TTCTGTGACCTTTGACCCATTTTGTATCTAACGCTGCCACTGCCCTTGAAGAAAGATCGAGTTATGGAG  
 GTTTTCTGGTCTCTGCTGACCCCTACTGCAGACCTACTCAGTACCGTGTGACTGTGCCGCTGATGGGGG  
 CTGTGTCCGACCTGTGCGAGGCTCTCTCCAGGCTGTCTGGCATTGCTGCAGAAAAATGTTGGTGCAGAA  
 TGTGTATAATCACCGATCCACAAAATTTTCAAATGGATGAAGGTTTAAACCACATCATGCCTCGGGAT  
 GACATTTTCTGTACGAGGCTCTGCAGCACTTCCGTGGATGGCTCGGAATGTGTCACGCTTCCAGTCTACT  
 TCAGGGAGAGGAAGTCCAGGCCATCAAGCACTTCTCCGATCAGCGCTATATGGGCAGCCACTATTGCT  
 TTCTGTCCCAAGCACAAGTTAACCCCTTGAGTCTTTGTACCAGGCTGTTTGTGATCGTATCAGCCGCTAT  
 GTGAAACAGCCTTACCTGATGAGTTTGGCAGCTCACCTTGGAGCCAGGGGCTGCAATGGCTCCAGGA  
 ACAGCTGTGAAGGAGAAGATGAGGAAGAAATGGAGCATCAGGAAGAAGGCCAAAGAGCAGCTTTCAGAAAC  
 AGAAGGCAGTGGGGAAGATGAGCCAGGAAATGACCCCAAGTGAAGCCACCCAAAAGAAGATCAAAGGCCAG  
 CCCTGCCCAAAAAGGCTTTTACCTTCAGTCTTGTGAACCTCTATGGAACAGCTGACATAAATCACTTG  
 CAGCTGATGGAAAACACTTAACTCAACTCTCGATCTACACTGGCCATGGATTGGGACAGTGAACCTCG  
 GAGACTTTACTATGATGAGCAAGAATCTGAGGCCTACGAGAAGCATGTGAGCATGTTGCAGCCTCAGAAG  
 AAGAAGAAGACCACAGTGGCCCTGAGAGACTGCATCGAGCTTTCACCACCATGGAGACCCTTGGGAGC  
 ATGACCCCTGGTACTGTCCCAACTGTAAGAAGCATCAACAGGCCACAAAAAGTTTGACCTATGGTCTT  
 GCCAAGATCCTGGTGGTCCACCTCAAACGTTTCTCTACAACAGATACTGGAGGGATAAGCTCGACACA  
 GTCGTAGAATTCCAATCAGAGGGCTGAACATGTCGAGTTTGTCTGTAACCTGTGAGCAAGGCCTTATG  
 TGTACGACCTATTGCCGTGCAATCATTATGGAGCCATGGGGTTGGCCACTACACTGCATATGCGAA  
 GAACAACTGAATGGTAAATGGTATTACTTTGATGATAGCAACGTGTCCCTGGCCTCTGAGGATCAGATA  
 GTGACTAAAGCAGCTTATGTCTATTTTACCAACGTGAGATGATGAATTTTATAAGACACCTTCACTTA  
 GCAGTTCTGGTCTCTGATGGAGGGACACGACCAAGCAGCTCTCAGCAGGGCTTTGGGGATGATGAGGC  
 TTGCAGCATGGACACCAAC

**ACGCGT**ACGCGGCCGCTCGAGCAGAACTCATCTCAGAAGAGGATCTGGCAGCAAATGATATCCTGGATT  
 ACAAGGATGACGACGATAAGGTTTAA

Protein Sequence: >RC224586 representing NM\_003363  
 Red=Cloning site Green=Tags(s)

MAEGGGCRERPDAETQKSELGPLMRTTLQRGAQWYLIDSRWFKQWKKYVGFDSWDMYVNGEHNLFPGPID  
 NSGLFSDPESQTLKEHLIDELDYLVPTAEWNKLLNHYGCVGQQPIVRKVVEHGLFVKHCKVEVYLLEL  
 KLCENSODPTNVLSCHFSAKADTIATIEKEMRKLFNIPAEERETRLWNKYMSNTYEQLSKLDNTVQDAGLYQG  
 QVLVIEPQNEGTWPRQTLQSKSSTAPSRNFTTSPKSSASPYSSVSASLIANGDSTSTCGMHSSGVSRRG  
 SGFSASYNCEPPSSHIQPLGCLGNLGNCTCFMNSALQCLSNAPLTDYFLKDEYEAENRDNPLGMKGE  
 IAEAYAELIKQMWSGRDAHVAPRMFKTQVGRFAPOFSGYQQQDSQELLAFLLDGLHEDLNRVKKPKPYLEL  
 KDANGRPDAVVAKEAWENHRLRNDISVIVDTFHGLFKSTLVCPECAKVSVTFDPFCYLTPLPLKDRVME  
 VFLVPADPHCRPTQYRVTVPLMGAVSDLCEALSRLSGIAAENMVADVYNHRFHKIFQMDEGLNHIMPRD  
 DIFVYEVCSVSDGSECVTLPVYFRERKSRPSSTSSASALYGQPLLLSVPKHKL TLESLYQAVCDRISRY  
 VKQPLPDEFGSSPLEPGACNGSRNSCEGEDEEEMHQEEGKEQL SETEGSGEDEPGNDPSETTQKKIKGQ  
 PCPKRLF TFSLVNSYGTADINSLAADGKLLKLSRSTLAMDWSETRRLYYDEQESEAYEKHVSMLQPQK  
 KKKTTVALRDCIELFTTMETLGEHDPWYCPNCKKHQQATKKFDLWSPKILVVHLKRF SYNRYWRDKLDT  
 VVEFPIRGLNMSEFVNCLSARPYVYDLIAVSNHYGAMGVGHYAYAKNKLNGKWYFDDSNVSLASEDQI  
 VTKAAYVLFYQRRDEFYKTPSLSSSGSSDGGTRPSSSQGFGDDEACSMDTN

TRTRPLEQKLISEEDLAANDILDYKDDDDKV

Chromatograms: [https://cdn.origene.com/chromatograms/mg2877\\_a07.zip](https://cdn.origene.com/chromatograms/mg2877_a07.zip)

Restriction Sites: SgfI-MluI

Cloning Scheme:

Cloning sites used for ORF Shuttling:



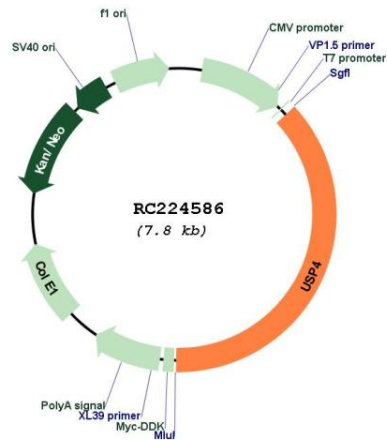
\* The last codon before the Stop codon of the ORF

ACCN: NM\_003363

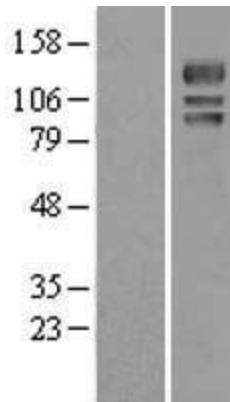
ORF Size: 2889 bp

<b>OTI Disclaimer:</b>	The molecular sequence of this clone aligns with the gene accession number as a point of reference only. However, individual transcript sequences of the same gene can differ through naturally occurring variations (e.g. polymorphisms), each with its own valid existence. This clone is substantially in agreement with the reference, but a complete review of all prevailing variants is recommended prior to use. <a href="#">More info</a>
<b>OTI Annotation:</b>	This clone was engineered to express the complete ORF with an expression tag. Expression varies depending on the nature of the gene.
<b>Components:</b>	The ORF clone is ion-exchange column purified and shipped in a 2D barcoded Matrix tube containing 10ug of transfection-ready, dried plasmid DNA (reconstitute with 100 ul of water).
<b>Reconstitution Method:</b>	<ol style="list-style-type: none"> <li>1. Centrifuge at 5,000xg for 5min.</li> <li>2. Carefully open the tube and add 100ul of sterile water to dissolve the DNA.</li> <li>3. Close the tube and incubate for 10 minutes at room temperature.</li> <li>4. Briefly vortex the tube and then do a quick spin (less than 5000xg) to concentrate the liquid at the bottom.</li> <li>5. Store the suspended plasmid at -20°C. The DNA is stable for at least one year from date of shipping when stored at -20°C.</li> </ol>
<b>RefSeq:</b>	<a href="#">NM_003363.4</a>
<b>RefSeq Size:</b>	3696 bp
<b>RefSeq ORF:</b>	2892 bp
<b>Locus ID:</b>	7375
<b>UniProt ID:</b>	<a href="#">Q13107</a>
<b>Cytogenetics:</b>	3p21.31
<b>Domains:</b>	UCH, DUSP
<b>Protein Families:</b>	Druggable Genome, Protease
<b>MW:</b>	108.4 kDa
<b>Gene Summary:</b>	The protein encoded by this gene is a protease that deubiquitinates target proteins such as ADORA2A and TRIM21. The encoded protein shuttles between the nucleus and cytoplasm and is involved in maintaining operational fidelity in the endoplasmic reticulum. Three transcript variants encoding different isoforms have been found for this gene. [provided by RefSeq, Oct 2011]

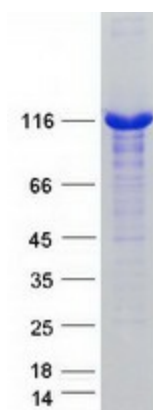
Product images:



Circular map for RC224586



Western blot validation of overexpression lysate (Cat# [LY418737]) using anti-DDK antibody (Cat# [TA50011-100]). Left: Cell lysates from untransfected HEK293T cells; Right: Cell lysates from HEK293T cells transfected with RC224586 using transfection reagent MegaTran 2.0 (Cat# [TT210002]).



Coomassie blue staining of purified USP4 protein (Cat# [TP324586]). The protein was produced from HEK293T cells transfected with USP4 cDNA clone (Cat# RC224586) using MegaTran 2.0 (Cat# [TT210002]).