

Product datasheet for **RC224569**

Lamin B Receptor (LBR) (NM_194442) Human Tagged ORF Clone

Product data:

Product Type:	Expression Plasmids
Product Name:	Lamin B Receptor (LBR) (NM_194442) Human Tagged ORF Clone
Tag:	Myc-DDK
Symbol:	Lamin B Receptor
Synonyms:	C14SR; DHCR14B; LMN2R; PHA; PHASK; TDRD18
Mammalian Cell Selection:	Neomycin
Vector:	pCMV6-Entry (PS100001)
E. coli Selection:	Kanamycin (25 ug/mL)



[View online »](#)

ORF Nucleotide Sequence:

>RC224569 ORF sequence
 Red=Cloning site Blue=ORF Green=Tags(s)

TTTTGTAATACGACTCACTATAGGGCGGCCGGAATTCGTCGACTGGATCCGGTACCGAGGAGATCTGCC
 GCC**CGGATCGCC**

ATGCCAAGTAGGAAATTTGCCGATGGTGAAGTGGTGAAGAGTTCGATGGCCTGGGAGTTCACCTTTATTATG
 AAGTAGAAATTCGAGCCACGACAGCACCTCCAGCTTTACACTGTGAAGTATAAAGATGGAACAGAGCT
 TGAATTGAAAGAGAATGATATTAAGCCTTTAACTTCCTTTAGGCAAAGGAAAGGTGGCTCAACTCCAGT
 TCCCTTCCAGACGCGGAGGGAGTGCATCAAGGTCACGCTCCCGATCCCTGGTCGACCCTAAAAGTG
 CCCGCCGATCTGCTTCTGCTTCCACCAGGCCGACATTAAGGAAGCAAGGAGGGAAGTGAAGTTAAATT
 GACTCCGCTGATTCTGAAGCCATTTGAAATAGCATCAGCAGATATAATGGGGAGCTGAGCATATTGAG
 AGAAATGACGCACCTCATAAAAAACACAGGAAAAATTCAGTTTGTCAAGAAGCAGTTACATAGCAA
 CACAGTATAGCCTTCGTCGAAGAAGAGAAGAAGTCAAATTAAGAAATAGATTCTAAGGAAGAAAAATA
 CGTTGCAAAGAAGTGGCAGTGAGAACCTTTGAAGTGACCCCATCCGGGCAAAGGACTTGGAGTTTGGG
 GGAGTACCTGGTGTGTTTCTCATCATGTTTGGCCTGCCTGTTCCTCTTCTGTTGCTGTTGATGTGTA
 AACAGAAAGATCCAGTCTTCTGAATTTCCCTCCTCCTTTGCCAGCTTTGTATGAGTTATGGGAAACCAG
 AGTATTTGGGGTCTACCTCCTGTGGTTTTTGTATCAAGTCTGTCTACCTACTGCCAATGGAAAGGTT
 GTAGAAGGAACGCCTCTTATTGATGGAAGAAGACTCAAGTATAGATTAATGGATTCTATGCTTTTATCC
 TGACATCTGCAGTCATCGGAACATCTCTTCCAGGGCGTAGAGTTTCATTACGTGTACAGTCATTTTCT
 TCAGTTTGCACCTGCGGCCACTGTTTTTGTGTGGTCTTGAGTGTGTATCTACATGCGCTCTTTGAAA
 GCGCCCCGGAATGACCTGTCGCTGCCAGCTCTGAAATGCTGTCTATGATTTCTTATTGGCCGTGAAT
 TAAACCCTCGAATGGTACTTTTGTACTCAAATACTTTTGTGAATTGCGCCCCGGATTGATTGGATGGGT
 GGTTATTAACCTGGTGATGCTTTTGGCTGAAATGAAATACAGGACCGCGCTGTTCCATCCTTGGCCATG
 ATTTTAGTTAATAGTTTCCAGCTTCTCTATGTGGTGGATGCTCTGGAATGAGGAAGCGTTGTTGACGA
 CCATGGACATCATCCACGATGGATTTGGATTGATGCTGGCTTTTGGAGACTTGGTGTGGTTCCCTTTAT
 TTACAGCTTCCAAGCCTTTTATTAGTCAGTCATCCAAATGAAGTGTCTTGGCCAATGGCTTCTCTAATT
 ATTGTTCTGAACTTTGTGGTTATGTAATCTCCGAGGTGCAAATTCAGAAAAATGCATTCCGGAAAA
 ATCCCAGTGATCCAAAGCTTGCACATTTAAAACCATTCACTTCAACGGGAAAAATCTTCTAGTTTC
 TGGATGGTGGGGCTTTGTTGCCACCCCAATTACTTGGGTGATCTCATCATGGCCTTGGCGTGGTCCCTC
 CCATGTGGTTTTAACACATTCTGCCTTATTTCTACATAATTTATTTACCATGTTGCTTGTCCACCGAG
 AAGCTCGTGACGAGTACCACTGTAAAGAAGAAATACGGCGTGGCTTGGGAAAAGTACTGTCAGCGTGTGCC
 CTACCGTATATTTCCATACATCTAC

ACGCGTACGCGGCCGCTCGAGCAGAACTCATCTCAGAAGAGGATCTGGCAGCAAATGATATCCTGGATT
 ACAAGGATGACGACGATAAGGTTTAA

Protein Sequence:

>RC224569 protein sequence
 Red=Cloning site Green=Tags(s)

MPSRKFADGEVVRGRWPGSSLYEVEILSHDSTSQLYTVKYKDGTELELKENDIKPLTSFRQRKGGSTSS
 SPSRRRGSRSRSRSPGRPPKSARRSASASHQADIKEARREVEVKLTPLILKPFGNISRYNGEPEHIE
 RNDAPHKNTQEKFSLSQESSYIATQYSLRPRREEVKLKEIDSKEEKYVAKELAVRTFEVTPIRAKDLEFG
 GVPGVFLIMFGLPVFLFLLLLMCKQKDPSSLNFPPLPALYELWETRVFGVYLLWFLIQVLFYLLPIGKV
 VEGTPLIDGRRLLKYRLNGFYAFILTSAVIGTSLFQGVFHYVYSHFLQFALAATVFCVVLSVYLYMRSLK
 APRNDLSPASSGNAVYDFFIGRELNPRIGTFDLKYFCELRPGLIGWVINLVMLLAEMKIQDRAVPSLAM
 ILVNSFQLLYVVDALWNEEALLTTMDIHDGFGFMLAFGDLVWVPIYSFQAFYLVSHPNVSWPMASLI
 IVLKLKCGYVIFRGANSQKNAFRKNPSDPKLAHLKTIHTSTGKNLLVSGWVGFVRHPNYLGDLMALAWSL
 PCGFNHILPYFYIIFFTMLLVHREARDEYHCKKKYGVAVEKYCQRPYRIFPYIY

TRTRPLEQKLISEEDLAANDILDYKDDDDKV

Chromatograms: https://cdn.origene.com/chromatograms/mk6232_h08.zip

Restriction Sites: SgfI-MluI

Cloning Scheme:



ACCN: NM_194442

ORF Size: 1845 bp

OTI Disclaimer: The molecular sequence of this clone aligns with the gene accession number as a point of reference only. However, individual transcript sequences of the same gene can differ through naturally occurring variations (e.g. polymorphisms), each with its own valid existence. This clone is substantially in agreement with the reference, but a complete review of all prevailing variants is recommended prior to use. [More info](#)

OTI Annotation: This clone was engineered to express the complete ORF with an expression tag. Expression varies depending on the nature of the gene.

Components: The ORF clone is ion-exchange column purified and shipped in a 2D barcoded Matrix tube containing 10ug of transfection-ready, dried plasmid DNA (reconstitute with 100 ul of water).

- Reconstitution Method:**
1. Centrifuge at 5,000xg for 5min.
 2. Carefully open the tube and add 100ul of sterile water to dissolve the DNA.
 3. Close the tube and incubate for 10 minutes at room temperature.
 4. Briefly vortex the tube and then do a quick spin (less than 5000xg) to concentrate the liquid at the bottom.
 5. Store the suspended plasmid at -20°C. The DNA is stable for at least one year from date of shipping when stored at -20°C.

RefSeq: [NM_194442.2](#)

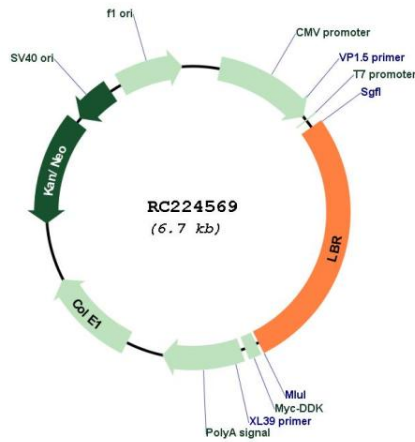
RefSeq Size: 3827 bp

RefSeq ORF: 1848 bp

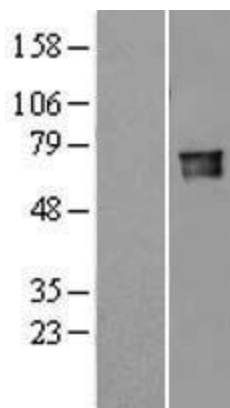
Locus ID: 3930
UniProt ID: [Q14739](#)
Cytogenetics: 1q42.12
Protein Families: Druggable Genome, Transmembrane
MW: 70.7 kDa

Gene Summary: The protein encoded by this gene belongs to the ERG4/ERG24 family. It localized in the nuclear envelope inner membrane and anchors the lamina and the heterochromatin to the membrane. It may mediate interaction between chromatin and lamin B. Mutations of this gene has been associated with autosomal recessive HEM/Greenberg skeletal dysplasia. Alternative splicing occurs at this locus and two transcript variants encoding the same protein have been identified. [provided by RefSeq, Jul 2008]

Product images:



Circular map for RC224569



Western blot validation of overexpression lysate (Cat# [LY405131]) using anti-DDK antibody (Cat# [TA50011-100]). Left: Cell lysates from untransfected HEK293T cells; Right: Cell lysates from HEK293T cells transfected with RC224569 using transfection reagent MegaTran 2.0 (Cat# [TT210002]).