

Product datasheet for **RC224563**

EXOC6B (NM_015189) Human Tagged ORF Clone

Product data:

Product Type:	Expression Plasmids
Product Name:	EXOC6B (NM_015189) Human Tagged ORF Clone
Tag:	Myc-DDK
Symbol:	EXOC6B
Synonyms:	SEC15B; SEC15L2; SEMDJL3
Mammalian Cell Selection:	Neomycin
Vector:	pCMV6-Entry (PS100001)
E. coli Selection:	Kanamycin (25 ug/mL)



[View online »](#)

ORF Nucleotide Sequence:

>RC224563 representing NM_015189
 Red=Cloning site Blue=ORF Green=Tags(s)

TTTTGTAATACGACTCACTATAGGGCGGCCGGAATTCGTCGACTGGATCCGGTACCGAGGAGATCTGCC
 GCC**CGGATCGCC**

ATGGAGCGGGGTAAAGATGGCGGAGGCGGAGAGCCTGGAGACAGCGGCAGAGCAGCAGCGGATCCTGCGAG
 AGATCGAGAGCACTGACACGGCCTGCATCGGGCCACGCTCAGGTCTGTTTATGATGGTGAAGAACATGG
 ACGTTTCATGGAGAAGCTTGAAACTCGTATCCGTAATCACGACCGAGAAAATTGAGAAAATGTGCAACTTT
 CATTACCAGGGCTTTGTGGACTCTATAACTGAACTGCTGAAAGTGAGAGGAGAAGCCAGAAAACAAAA
 ATCAAGTGACGGATACTAATAGAAAACACAACATGAGGGAAAGGAACTGGTAATAGCAATGGAAGAGCT
 GAAGCAGTGTGACTACAACAGAGAAAATTTCTGCCACTGTTGATAAATTAATGCTGTGCTTCCAGTC
 CTAGAGATGTACAGCAAACTGAGGGACCAGATGAAAACAAAAGGCATTATCCTGCACTGAAAACCTGG
 AACATCTAGAGCATACCTACCTGCCTCAAGTAAGCCACTATCGATTCTGCAAGGTGATGGTGACAACAT
 CCCAAGCTTCGAGAAGAAAATAAAGATGTTTCTATGTCCGATCTCAAAGACTTTCTGGAGAGCATCCGC
 AAACATTCAGACAAAATTGGAGAGACTGCCATGAAGCAAGCCAGCAGCAAGAAAACCTGGATAACATCG
 TCTTGCAACAACCCAGAATAGGTAGCAAGAGGAAATCTAAGAAAGATGCATATATAATCTTTGATACAGA
 GATAGAAAAGTACTAGTCCGAAGTCTGAACAGGATTGAGGAATCTGGATGTTGAAGACGAGGAAGATGAT
 GAAGAGGTACCTGGGCCCCAAGATTTGGTGGATTTCTCTCCAGTTTATCGATGCTACATATATATTCTG
 TCCTGGGTGCCCGGAAACATTTGAGAATTACTACCGAAAACAGAGGCGAAAACAGGCTCGTTTGGTACT
 TCAACCTCCATCTAACATGCATGAACTTTAGTAGGCTACAGGAAGTATTTAATCAAATGTAGGCTTT
 TTTGTGGTTGAAGATCACATTTACATACAACCCAGGGCTTAGTAAATAGAGCCTACATTGATGAACTGT
 GGGAAATGGCACTTTCAAAAACCATCGCAGCACTCCGTACCCACTCGTCTTACTGTTCTGATCCAAACCT
 TGTGTTAGATTTGAAGAACCTCATTGTGCTTTTTGCTGACACACTTCAGGTGTATGGTTTCCCTGTAAT
 CAGCTTTTTGACATGCTGTTAGAAAATCAGAGACCAATATAGTAAACTCTGCTAAAGAAGTGGCAGGTA
 TTTTCAGAAAACATACTTGATTCTGACAACTACAGTCTATACCAGTAACAAGTGAAGAGATGTACAAAA
 GGTGGTAGGACAATCCCATTTCAAGATATAGAACTGGAAAAGCAACATTTCCAAAAAAGTTTCTTTTC
 TCTGAATTTGTCAAAAGTTTACAACCAAAATTAAGAATTTATCTACGTTGTCTGAAGTTTTCAGAAG
 ATCTTCATCTAAGCTCAACTGAAGTTGATGACATGATTCGAAAATCAACAAACCTGTTGCTAACCAGGAC
 TCTGAGCAACTCTCTGCAGAATGTAATTAAGGAAGAATATTGGGCTTACTGAGCTTGTTCAGATTATT
 ATCAATACAACACATTTGGAGAAATCCTGTAAGTACTTGAAGAATTTATCACCACATCACTAATGTGC
 TTCCAGAGACAGTTCACACTACCAAGCTCTATGGCACCACAACCTTTAAGGATGCTAGACATGCAGCTGA
 AGAAGAGATTTATACCAACTAAACCAGAAGATTGACCAGTTCCTACAGCTGGCAGACTATGACTGGATG
 ACCGGAGATTTGGGCAACAAAGCTAGTGATTACCTGGTAGACCTCATTGCCTTTCTTCGTAGCACCTTTG
 CTGATTCACACACCTTCTGAAAAGGTGGCCAGACAGCGTGTATGTCAGCTTGAAGCATTAGCCAC
 ATCCTTGATGCAACTTTGTTGGAAGCTGAAGTGGCAGCTCACCTGGGAGCATTACAGCAGTTCAAC
 TTGGACGTCAGAGAATGTGAACAGTTTCCAGATCCGGCCCGGTGCCTGGGTTCCAGGAGGACACGCTGC
 AGTTGGCTTTCATCGACTTGAGACAACCTTTGGATCTTTTCATCCAGTGGGATTGGTCAACCTACCTTGC
 TGACTATGGTCAGCCCAACTGCAAGTACCTCCGGGTAACCCAGTGACTGCTGACCCTGCTTGAGAAG
 ATGAAGGATACTAGCCGCAAGAACAACATGTTTGCACAGTTTCGGAAAAATGAGCGAGACAAGCAGAAAC
 TCATTGACACCGTGGCCAAGCAGCTCCGAGGACTCATCAGCAGCCACCACTCA

ACGCGTACGCGGCCGCTCGAGCAGAAAACATCTCAGAAGAGGATCTGGCAGCAAATGATATCCTGGATT
 ACAAGGATGACGACGATAAGGTTTAA

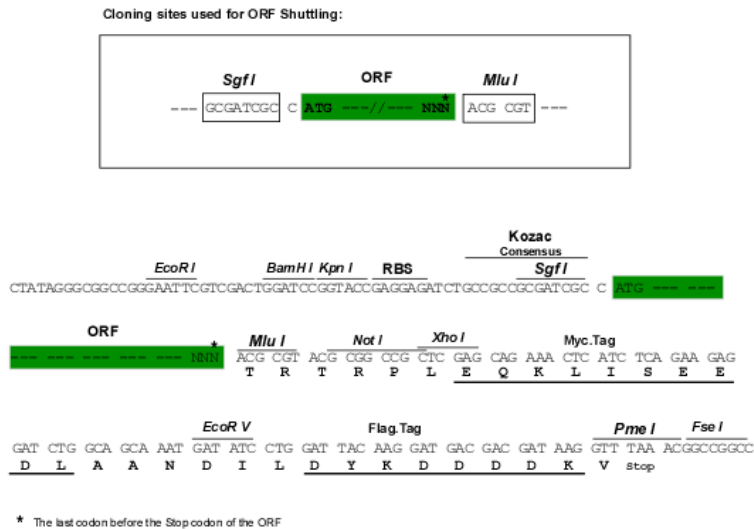
Protein Sequence: >RC224563 representing NM_015189
Red=Cloning site Green=Tags(s)

MER GKMAEAE SLE TAAEHERILREIESTDTACIGPTLRSVYDGEEHGRFMEKLETRIRNHDREIEKMCNF
HYQGFVDSITELLKVRGEAQKLNQVTDNRKLGHEGKELVIAMEELKQCRLQQRNISATVDKMLCLPV
LEMYSKLRDQMKTKRHYPALKTLEHLEHTYLPQVSHYRFCKVMVDNIPKLREEIKDVSMSDLKDFLESIR
KHSDKIGETAMKQAQQQRNLNIVLQQPRIGSKRKSCKDAYIIFDTEIESTSPKSEQDSGILDVEDEEDD
EEVPGAQDLVDFSPVYRCLHIYSVLGARETFENYRQRRKQARLVLPSPSNMHETLDGYRKYFNQIVGF
FVVEDHILHTTQGLVNRAYIDELWEMALSKTIAALRTHSSYCDPNLVLDLKNLIVLFADTLQVYGFVFN
QLFDMLEIRDQYSETLLKKWAGIFRNILDSNYSPVPTSEEMYKVVGGQFPFQDIELEKQPFKPKFPF
SEFVPKVYNQIKEFIYACLKFSEDLHLSSTEVDMMIRKSTNLLL TRTLSNSLQNVIKRKNIGLTEL VQII
INTTHLEKSKYLEEFITNITNVLPEVHTTKLYGTTTTFKDARHAAEEEEIYTNLNQKIDQFLQLADYDWM
TGDLGNKASDYLVDLIAFLRSTFAVFTHLPGKVAQTACMSACKHLATSLMQLLLEAEVRQLTLGALQQFN
LDVRECEQFARSGPVPGFQEDTLQLAFIDLRQLDLFIQWDWSTYLADYGQPNCKYLRVNPVTALTLLEK
MKDTSRKNMFAQFRKNERDKQKLI DTVAKQLRGLISSHHS

TRTRPLEQKLI SEEDLAANDILDYKDDDDKV

Chromatograms: https://cdn.origene.com/chromatograms/mk8045_b02.zip

Restriction Sites: Sgfl-Mlul

Cloning Scheme:


ACCN: NM_015189

ORF Size: 2433 bp

OTI Disclaimer: The molecular sequence of this clone aligns with the gene accession number as a point of reference only. However, individual transcript sequences of the same gene can differ through naturally occurring variations (e.g. polymorphisms), each with its own valid existence. This clone is substantially in agreement with the reference, but a complete review of all prevailing variants is recommended prior to use. [More info](#)

OTI Annotation: This clone was engineered to express the complete ORF with an expression tag. Expression varies depending on the nature of the gene.

Components: The ORF clone is ion-exchange column purified and shipped in a 2D barcoded Matrix tube containing 10ug of transfection-ready, dried plasmid DNA (reconstitute with 100 ul of water).

Reconstitution Method:

1. Centrifuge at 5,000xg for 5min.
2. Carefully open the tube and add 100ul of sterile water to dissolve the DNA.
3. Close the tube and incubate for 10 minutes at room temperature.
4. Briefly vortex the tube and then do a quick spin (less than 5000xg) to concentrate the liquid at the bottom.
5. Store the suspended plasmid at -20°C. The DNA is stable for at least one year from date of shipping when stored at -20°C.

RefSeq: [NM_015189.3](#)

RefSeq Size: 2594 bp

RefSeq ORF: 2436 bp

Locus ID: 23233

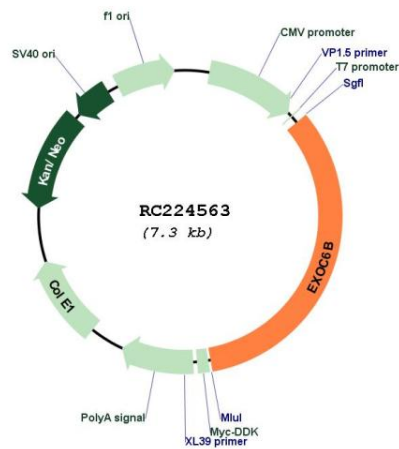
UniProt ID: [Q9Y2D4](#)

Cytogenetics: 2p13.2

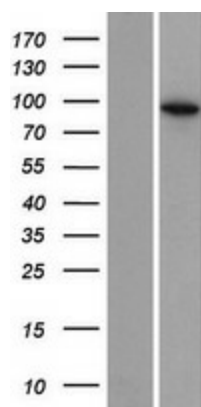
MW: 94 kDa

Gene Summary: This gene encodes a protein which is a part of the evolutionarily conserved exocyst, a multimeric protein complex necessary for exocytosis, which in turn, is crucial for cell growth, polarity and migration. Disruption of this gene may be associated with phenotypes exhibiting multiple symptoms including intellectual disability and developmental delay (DD). [provided by RefSeq, Jun 2016]

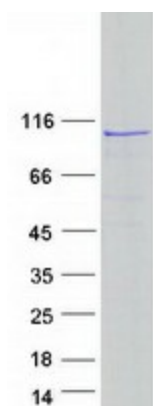
Product images:



Circular map for RC224563



Western blot validation of overexpression lysate (Cat# [LY414687]) using anti-DDK antibody (Cat# [TA50011-100]). Left: Cell lysates from un-transfected HEK293T cells; Right: Cell lysates from HEK293T cells transfected with RC224563 using transfection reagent MegaTran 2.0 (Cat# [TT210002]).



Coomassie blue staining of purified EXOC6B protein (Cat# [TP324563]). The protein was produced from HEK293T cells transfected with EXOC6B cDNA clone (Cat# RC224563) using MegaTran 2.0 (Cat# [TT210002]).