

Product datasheet for RC224562

C21ORF56 (SPATC1L) (NM_032261) Human Tagged ORF Clone

Product data:

Product Type: Expression Plasmids
Product Name: C21ORF56 (SPATC1L) (NM_032261) Human Tagged ORF Clone
Tag: Myc-DDK
Symbol: C21ORF56
Synonyms: C21orf56
Mammalian Cell Selection: Neomycin
Vector: pCMV6-Entry (PS100001)
E. coli Selection: Kanamycin (25 ug/mL)
ORF Nucleotide Sequence: >RC224562 ORF sequence
 Red=Cloning site Blue=ORF Green=Tags(s)

TTTTGTAATACGACTCACTATAGGGCGGCCGGAATTCGTCGACTGGATCCGGTACCGAGGAGATCTGCC
 GCC**CGATCGCC**

ATGGTCCGGCCTAAGAAGGTGTGTTTCTCGGAGAGCAGCCTGCCACCGGGGACAGGACCAGGAGGAGCT
 ACTACCTCAATGAGATCCAGAGCTTCGCGGGCGCCGAGAAGGACGCGCGTGGTGGCGAGATCGCCTT
 CCAGCTGGACCGCCGATCCTGGCTACGTGTTCCCGGGCGTGACGCGGCTCTACGGCTCACGGTGGCC
 AACATCCCGAGAAGATCGAGCAGACCTCCACCAAGTCTCTGGACGGCTCCGTGGACGAGAGGAAGCTGC
 GCGAGCTGACGCAGCGCTACCTGGCCCTGAGCGCGCCCTGGAGAAGCTGGGCTACAGCCGCGACGTGCA
 CCGGGCGTTCAGCGAGTTCCTCATCAACACCTACGGAATCCTGAAGCAGCGGCCGACCTGCGCGCAAC
 CCCCTGCACAGCAGCCCGCCGCGCTGCGCAAGCTGGTACGACGTGGTCCCCCAAGTTCCTGGCGC
 ACTCGTGCTGCTCAACTGCCTGTGCGAGCTCTCAAGGAGGACGGCAAGCCCTCTTCGCTGG

ACGCGTACGCGGCCGCTCGAGCAGAACTCATCTCAGAAGAGGATCTGGCAGCAATGATATCCTGGATT
 ACAAGGATGACGACGATAAGGTTTAA

Protein Sequence: >RC224562 protein sequence
 Red=Cloning site Green=Tags(s)

MVRPKKVCFSSESLPTGDRTRRSYYLNEIQSFAGAEEKDARVVGEIAFQLDRRILAYVFPVTRLYGFTVA
 NIPEKIEQTSTKSLDGSVDERKLRREL TQRYLAL SARLEKLGYSRDVHPAFSEFLINTYGILKQRPDLRAN
 PLHSSPAALRKLVIDVPPKFLGDSLLLLNCLCELSKEDGKPLFAW

TRTRPLEQKLISEEDLAANDILDYKDDDDKV

Chromatograms: https://cdn.origene.com/chromatograms/mk6453_h05.zip



[View online »](#)

Restriction Sites: SgfI-MluI

Cloning Scheme:



ACCN: NM_032261

ORF Size: 558 bp

OTI Disclaimer: The molecular sequence of this clone aligns with the gene accession number as a point of reference only. However, individual transcript sequences of the same gene can differ through naturally occurring variations (e.g. polymorphisms), each with its own valid existence. This clone is substantially in agreement with the reference, but a complete review of all prevailing variants is recommended prior to use. [More info](#)

OTI Annotation: This clone was engineered to express the complete ORF with an expression tag. Expression varies depending on the nature of the gene.

Components: The ORF clone is ion-exchange column purified and shipped in a 2D barcoded Matrix tube containing 10ug of transfection-ready, dried plasmid DNA (reconstitute with 100 ul of water).

Reconstitution Method:

1. Centrifuge at 5,000xg for 5min.
2. Carefully open the tube and add 100ul of sterile water to dissolve the DNA.
3. Close the tube and incubate for 10 minutes at room temperature.
4. Briefly vortex the tube and then do a quick spin (less than 5000xg) to concentrate the liquid at the bottom.
5. Store the suspended plasmid at -20°C. The DNA is stable for at least one year from date of shipping when stored at -20°C.

RefSeq: [NM_032261.5](#)

RefSeq Size: 1181 bp

RefSeq ORF: 561 bp

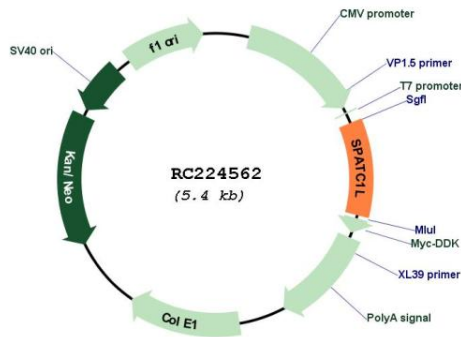
Locus ID: 84221

UniProt ID: [Q9H0A9](#)

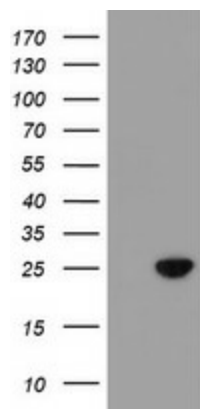
Cytogenetics: 21q22.3

MW: 21 kDa

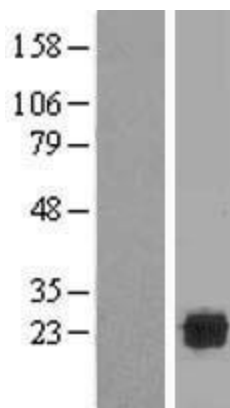
Product images:



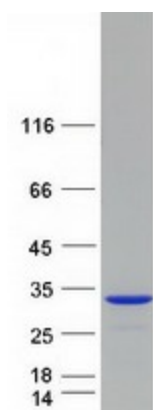
Circular map for RC224562



HEK293T cells were transfected with the pCMV6-ENTRY control (Cat# [PS100001], Left lane) or pCMV6-ENTRY C21orf56 (Cat# RC224562, Right lane) cDNA for 48 hrs and lysed. Equivalent amounts of cell lysates (5 ug per lane) were separated by SDS-PAGE and immunoblotted with anti-C21orf56 (Cat# [TA504634]). Positive lysates [LY410249] (100ug) and [LC410249] (20ug) can be purchased separately from OriGene.



Western blot validation of overexpression lysate (Cat# [LY410249]) using anti-DDK antibody (Cat# [TA50011-100]). Left: Cell lysates from untransfected HEK293T cells; Right: Cell lysates from HEK293T cells transfected with RC224562 using transfection reagent MegaTran 2.0 (Cat# [TT210002]).



Coomassie blue staining of purified SPATC1L protein (Cat# [TP324562]). The protein was produced from HEK293T cells transfected with SPATC1L cDNA clone (Cat# RC224562) using MegaTran 2.0 (Cat# [TT210002]).