

Product datasheet for **RC224549**

GBP3 (NM_018284) Human Tagged ORF Clone

Product data:

| | |
|---------------------------|---|
| Product Type: | Expression Plasmids |
| Product Name: | GBP3 (NM_018284) Human Tagged ORF Clone |
| Tag: | Myc-DDK |
| Symbol: | GBP3 |
| Mammalian Cell Selection: | Neomycin |
| Vector: | pCMV6-Entry (PS100001) |
| E. coli Selection: | Kanamycin (25 ug/mL) |



[View online »](#)

ORF Nucleotide Sequence:

>RC224549 representing NM_018284
 Red=Cloning site Blue=ORF Green=Tags(s)

TTTTGTAATACGACTCACTATAGGGCGGCCGGAATTCGTCGACTGGATCCGGTACCGAGGAGATCTGCC
 GCC**CGGATCGCC**

ATGGCTCCAGAGATCCACATGACAGGCCAATGTGCCTCATTGAGAACACTAATGGGAACTGGTGGCGA
 ATCCAGAAGCTCTGAAAATCCTGTCTGCCATTACACAGCCTGTGGTGGTGGCAATTGTGGCCCTCTA
 CCGCACAGGAAAATCCTACCTGATGAACAAGCTAGCTGGGAAGAATAAGGGCTTCTCTGGGCTCCACA
 GTGAAATCTCACACCAAAGGAATCTGGATGTGGTGTGTGCCTCACCCAAAAAGCCAGAACACACCTTAG
 TCCTGCTTGACTGAGGGCCTGGGAGATGTAAGAAGGGTGACAACCAGAATGACTCCTGGATCTTCAC
 CCTGGCCGTCCTCTGAGCAGCACTCTCGTGTACAATAGCATGGGAACCATCAACCAGCAGGCTATGGAC
 CAACTGTACTATGTGACAGAGCTGACACATCGAATCCGATCAAAATCCTCACCTGATGAGAATGAGAATG
 AGGATTCAGCTGACTTTGTGAGCTTCTCCAGATTTTGTGTGGACTGAGAGATTTCTCCTGGACTT
 GGAAGCAGATGGACAACCCCTCACACCAGATGAGTACCTGGAGTATCCCTGAAGCTAACGCAAGGTACC
 AGTCAAAAAGATAAAAATTTTAATCTGCCCCGACTCTGTATCCGGAAATCTTCCAAAAGAAAAATGTT
 TTGTCTTCGATCTGCCATTACCCGAGGAAGCTTGCCAGCTTGAGAACTACAAGATGAAGAGCTGGA
 CCCTGAATTTGTGCAACAAGTAGCAGACTTCTGTTCTACATCTTAGCAATCCAAAACAAAACCTCTT
 TCAGGAGGCATCAAGGTCAATGGCCCTCGTCTAGAGAGCCTAGTGTGACCTATATCAATGTCTATCAGCA
 GAGGGGATCTGCCCTGCATGGAGAACGCAGTCTGGCCTTGCCAGATAGAGAAGCTCAGCCGAGTGCA
 AAAGGCTATTGCCACTATGACCAGCAGATGGCCAGAAGGTGCAGCTGCCCGCAGAAACCTCCAGGAG
 CTGTGGACCTGCACAGGGTTAGTGAGAGGGAGGCCACTGAAGTCTATATGAAGAAGCTTTTCAAGGATG
 TGGACCTCTGTTTCAAAGAAAATAGCGGCCAGCTAGACAAAAGCGGGATGACTTTTGTAAACAGAA
 TCAAGAAGCATCATCAGATCGTTGCTCAGCTTACTTCAGGTCAATTTTCAGTCTCTAGAAGAAGAAGTG
 AAGCGGGAAATTTATTCGAAACAGGGGCTATTGTCTTTTATTCAGAAGCTACAAGACCTGGAGAAAA
 AGTACTATGAGGAACCAAGGAAGGGGATACAGGCTGAAGAGATTCTGCAGACATACTTGAATCCAAGGA
 GTCTGTGACCGATGCAATTTACAGACAGACCAGATTCTCACAGAAAAGGAAAAGGAGATTGAAGTGGA
 TGTGTAAGGCTGAATCTGCACAGGCTTACGCAAAAATGGTGGAGGAAATGCAATAAAGTATCAGCAGA
 TGATGGAAGAGAAAGAGAAGGTTATCAAGAACATGTGAAACAATTGACTGAGAAGATGGAGAGGGAGAG
 GGCCAGTTGCTGGAAGAGCAAGAGAAGACCCTACTAGTAACTTCAGGAACAGGCCGAGTACTAAAG
 GAGAGATGCCAAGGTGAAAGTACCAACTTCAAAATGAGATACAAAAGCTACAGAAGACCCTGAAAAAAA
 AAACCAAGAGATATATGTCGCATAAGCTAAAGATC

ACGCGTACGCGGCCGCTCGAGCAGAAACTCATCTCAGAAGAGGATCTGGCAGCAAATGATATCCTGGATT
 ACAAGGATGACGACGATAAGGTTTAA

Protein Sequence:

>RC224549 representing NM_018284
 Red=Cloning site Green=Tags(s)

MAPEIHMTGPMCLIENGTNGLVANPEALKILSAITQPVVVVAIVGLYRTGKSYLMNKLKAGKNKGFSLGST
 VKSHTKGIWMWCVPHPKKPEHTLVLLDTEGLGDVKKGDNDNSWIFTLAVLLSSTLVYNSMGTINQQAMD
 QLYYVTELTTHRIRSKSSPDENENEDSADFVSPDFVWTLRDFSLDLEADGQPLTPDEYLEYSLKLTQGT
 SQKDKNFNLPRLCIRKFFPKKCFVFDLPIHRRKLAQLEKLQDEELDPEFVQVADFCSYIFSNSKTKTL
 SGGIKVNGPRLESVLTYINAI SRGDLPCMENAVLALAQIENSAAVQKAI AHYDQQMGQKVQLPAETLQE
 LLDLHRVSEREATEVYMKNSFKVDVHLLFQKLLAAQLDKKRDDFCQKQNEASSDRCSALLQVIFSPLEEEV
 KAGIYSKPGGYCLFIQKLQDLEKKYEEPRKGIQAEELQTYLKSKE SVTDAI LQTDQIL TEKEKEIEVE
 CVKAESAQASAKMVEEMQIKYQQMMEKEKSYQEHVKQLTEKMERERAQLLEEQEKTLSKLEQARVLK
 ERCQGESTQLQNEIQKLQKTLKKKTKRYMSHKLKI

TRTRPLEQKLISEEDLAANDILDYKDDDDKV

Chromatograms:

https://cdn.origene.com/chromatograms/ja1415_e08.zip

Restriction Sites: SgfI-MluI

Cloning Scheme:



ACCN: NM_018284

ORF Size: 1785 bp

OTI Disclaimer: The molecular sequence of this clone aligns with the gene accession number as a point of reference only. However, individual transcript sequences of the same gene can differ through naturally occurring variations (e.g. polymorphisms), each with its own valid existence. This clone is substantially in agreement with the reference, but a complete review of all prevailing variants is recommended prior to use. [More info](#)

OTI Annotation: This clone was engineered to express the complete ORF with an expression tag. Expression varies depending on the nature of the gene.

Components: The ORF clone is ion-exchange column purified and shipped in a 2D barcoded Matrix tube containing 10ug of transfection-ready, dried plasmid DNA (reconstitute with 100 ul of water).

- Reconstitution Method:
1. Centrifuge at 5,000xg for 5min.
 2. Carefully open the tube and add 100ul of sterile water to dissolve the DNA.
 3. Close the tube and incubate for 10 minutes at room temperature.
 4. Briefly vortex the tube and then do a quick spin (less than 5000xg) to concentrate the liquid at the bottom.
 5. Store the suspended plasmid at -20°C. The DNA is stable for at least one year from date of shipping when stored at -20°C.

RefSeq: [NM_018284.3](#)

RefSeq Size: 3051 bp

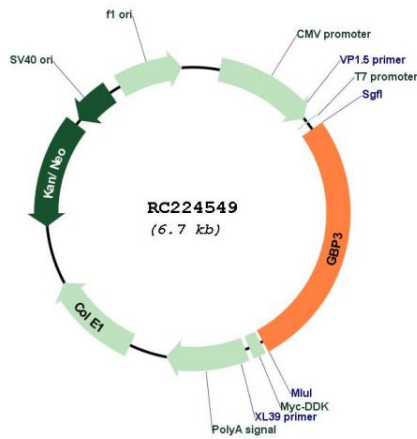
RefSeq ORF: 1788 bp

Locus ID: 2635

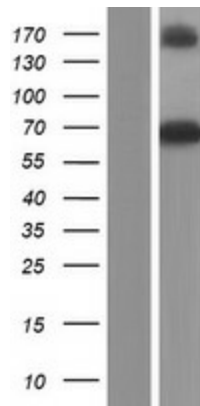
UniProt ID: [Q9H0R5](#)
Cytogenetics: 1p22.2
Domains: GBP
MW: 67.9 kDa

Gene Summary: This gene encodes a member of the guanylate-binding protein (GBP) family. GBPs specifically bind guanine nucleotides (GMP, GDP, and GTP) and contain two of the three consensus motifs found in typical GTP-binding proteins. The encoded protein interacts with a member of the germinal center kinase family. Multiple transcript variants encoding different isoforms have been found for this gene. [provided by RefSeq, Jan 2017]

Product images:



Circular map for RC224549



Western blot validation of overexpression lysate (Cat# [LY413094]) using anti-DDK antibody (Cat# [TA50011-100]). Left: Cell lysates from untransfected HEK293T cells; Right: Cell lysates from HEK293T cells transfected with RC224549 using transfection reagent MegaTran 2.0 (Cat# [TT210002]).