

Product datasheet for **RC224548**

CELF2 (NM_006561) Human Tagged ORF Clone

Product data:

Product Type:	Expression Plasmids
Product Name:	CELF2 (NM_006561) Human Tagged ORF Clone
Tag:	Myc-DDK
Symbol:	CELF2
Synonyms:	BRUNOL3; CELF-2; CUG-BP2; CUGBP2; ETR-3; ETR3; NAPOR
Mammalian Cell Selection:	Neomycin
Vector:	pCMV6-Entry (PS100001)
E. coli Selection:	Kanamycin (25 ug/mL)



[View online »](#)

ORF Nucleotide Sequence:

>RC224548 representing NM_006561
 Red=Cloning site Blue=ORF Green=Tags(s)

TTTTGTAATACGACTCACTATAGGGCGGCCGGAATTCGTCGACTGGATCCGGTACCGAGGAGATCTGCC
 GCC**CGGATCGCC**

ATGACTTCTGCCTTCAAGCTGGATTTCTCCCGGACATGATGGTCGAGGGCCGCTGCTCGTTCCCTGACA
 GAATTAACGGCACAGCCAACAAGATGAACGGAGCTTTGGATCACTCAGACCAACCAGACCCAGATGCCAT
 TAAGATGTTTGTGCGACAGATCCCCGGTCATGGTCGAAAAGGAGCTGAAAAGAACTTTTGGAGCCTTAC
 GGAGCCGCTACCCAGATCAACGCTCTCCGGGACCGGAGTCAGAACCCTCCGCAGAGTAAAGGTTGTTGTT
 TCGTAACATTTTATAACAAGAAAAGCTGCCTTGGAGCCAGAATGCACTGCACAAATATAAACTTTACC
 TGGGATGCATCATCCATTAGATGAAACCTGCAGATAGTAAAAGTCCAACGCTGTGGAAGACAGAAAA
 TTGTTTCATAGGAATGGTATCGAAGAAATGTAATGAGAACGACATCAGGGTATGTTCTCTCCATTTGGCC
 AGATAGAAGAATGCCGGATCCTCCGGGGACCTGATGGGCTGAGTCGAGGCTGTGCGTTTGCACATTTTC
 TACAAGGGCAATGGCACAGAATGCAATCAAAGCCATGCATCAGTCTCAGACCATGGAGGGCTGCTCTTCA
 CCTATCGTGGTGAAGTTTGTGACTCAGAAGGACAAAGAGCAAAGGCCCTCCAGCAGAGCTCGCTC
 AGCAGATGCAGCAGCTCAACACTGCCACCTGGGGAACTGACAGGGCTGGGCGGACTGACCCACAGTA
 TCTGGCGCTCTGCAGCAGGCCACCTCCTCCAGCAACTGGGTGCGTTTACGCGGATTCAACAAATGGCA
 GGCATGAATGCTTTACAGTTGCAGAACCCTGGCGAGCTGGCTGCTGCTGCAGCTGCGGCCAGACCTCAG
 CCACCAGACCAATGCAAACTCTCTACCACGAGCAGCGCCCTGGGAGCCCTCACGAGTCCCCTGGC
 TGCTTCAACCCCACTCACTGCTGGTGCAGCCATGAACTCCTGACCTCTCTCGGGACTCTGCAAGGA
 CTGGCTGGAGCCACTGTTGGACTGAATAATATTAATGCACTAGCAGTTGCTCAAATGCTCTCAGGTATGG
 CGGCTCTGAATGGAGGACTTGGCGCCACAGGCTTGACGAATGGCAGGCTGGCACCATGGCAGCCCTCAC
 CCAGGCCTACTCAGGAATTC AACAGTACGACGCGCCGCTGCCACTGTGTACAGCCAGAGCCTGCTG
 CAGCAGCAGAGCCTGCAGGCAGCCAGAAGGAAGTCCAGAGGGGCAAACCTCTTTATTTACCACCTTC
 CACAGGAATTTGGAGACCAGGACATTCTGCAGATGTTTCATGCCTTTTGGAAATGTTATCTCTGCTAAAGT
 CTTTATTGACAAACAGACCAATCTGAGCAAGTCTTTGGTTTTGTTAGCTACGACAATCCAGTCTCTGCA
 CAAGCTGCTATCCAAGCTATGAATGGCTTTAGATCGGCATGAAACGCTTGAAGTGCAGCTGAAGCGTT
 CCAAAAACGACAGCAAACCTTAC

ACGCGTACGCGGCCGCTCGAGCAGAACTCATCTCAGAAGAGGATCTGGCAGCAAATGATATCCTGGATT
 ACAAGGATGACGACGATAAGGTTTAA

Protein Sequence:

>RC224548 representing NM_006561
 Red=Cloning site Green=Tags(s)

MTSAFKLDLFLPDMMEVGRLLVPDRINGTANKMNGALDHSDQDPDAIKMFVQIPRSWSEKELKELFEPY
 GAVYQINVLDRSQNPPQSKGCCFVTFYTRKAALAEQNALHNIKTLPGMHPIQMKPADSEKSNAVEDRK
 LFIGMVSKKNENDIRVMFSPFGQIEECRILRGPDGLSRGCAFVTFSTRAMAQNAIKAMHQSQTMEGCSS
 PIVVKFADTQKDKERRLQQQLAQMQQLNTATWGNLTGLGGLTPQYLALLQQATSSSNLGAFTSGIQQMA
 GMNALQLQNLATLAAAAAAQTSATSTNANPLSTSSALGALTSPVAASTPNSTAGAAMNSLTSGLTQG
 LAGATVGLNNINALAVAQMLSGMAALNGGLGATGLTNGTAGTMDALTQAYSGIQQYAAAAALPTLYSLL
 QQQSAAGSQKEGPEGANLFYHLPQEFQDQDILQMFMPFGNVISAKVFIKQTNLSKCFGVSYDNPVSA
 QAAIQAMNGFQIGMKRLKVQLKRSKNDSKPY

TRTRPLEQKLISEEDLAANDILDYKDDDDKV

Chromatograms:

https://cdn.origene.com/chromatograms/mk8045_b04.zip

Restriction Sites:

Sgfl-MluI

Cloning Scheme:


ACCN: NM_006561

ORF Size: 1563 bp

OTI Disclaimer: The molecular sequence of this clone aligns with the gene accession number as a point of reference only. However, individual transcript sequences of the same gene can differ through naturally occurring variations (e.g. polymorphisms), each with its own valid existence. This clone is substantially in agreement with the reference, but a complete review of all prevailing variants is recommended prior to use. [More info](#)

OTI Annotation: This clone was engineered to express the complete ORF with an expression tag. Expression varies depending on the nature of the gene.

Components: The ORF clone is ion-exchange column purified and shipped in a 2D barcoded Matrix tube containing 10ug of transfection-ready, dried plasmid DNA (reconstitute with 100 ul of water).

- Reconstitution Method:**
1. Centrifuge at 5,000xg for 5min.
 2. Carefully open the tube and add 100ul of sterile water to dissolve the DNA.
 3. Close the tube and incubate for 10 minutes at room temperature.
 4. Briefly vortex the tube and then do a quick spin (less than 5000xg) to concentrate the liquid at the bottom.
 5. Store the suspended plasmid at -20°C. The DNA is stable for at least one year from date of shipping when stored at -20°C.

RefSeq: [NM_006561.3](#), [NP_006552.3](#)

RefSeq Size: 8005 bp

RefSeq ORF: 1566 bp

Locus ID: 10659

UniProt ID: [O95319](#)

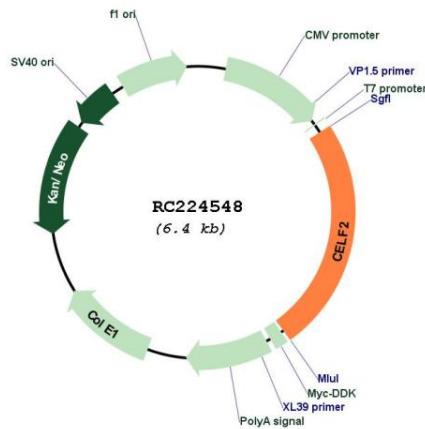
Cytogenetics: 10p14

Domains: RRM

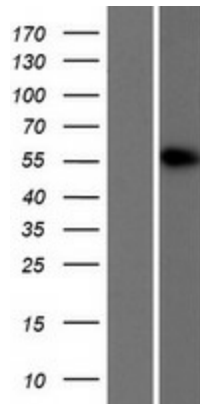
MW: 55.6 kDa

Gene Summary: Members of the CELF/BRUNOL protein family contain two N-terminal RNA recognition motif (RRM) domains, one C-terminal RRM domain, and a divergent segment of 160-230 aa between the second and third RRM domains. Members of this protein family regulate pre-mRNA alternative splicing and may also be involved in mRNA editing, and translation. Alternative splicing results in multiple transcript variants encoding different isoforms. [provided by RefSeq, Jul 2008]

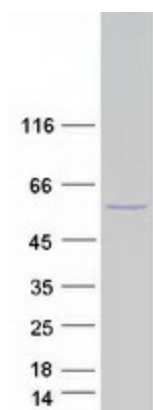
Product images:



Circular map for RC224548



Western blot validation of overexpression lysate (Cat# [LY416560]) using anti-DDK antibody (Cat# [TA50011-100]). Left: Cell lysates from untransfected HEK293T cells; Right: Cell lysates from HEK293T cells transfected with RC224548 using transfection reagent MegaTran 2.0 (Cat# [TT210002]).



Coomassie blue staining of purified CELF2 protein (Cat# [TP324548]). The protein was produced from HEK293T cells transfected with CELF2 cDNA clone (Cat# RC224548) using MegaTran 2.0 (Cat# [TT210002]).