

## Product datasheet for **RC224541**

### DDX19B (NM\_001014451) Human Tagged ORF Clone

#### Product data:

Product Type:	Expression Plasmids
Product Name:	DDX19B (NM_001014451) Human Tagged ORF Clone
Tag:	Myc-DDK
Symbol:	DDX19B
Synonyms:	DBP5; DDX19; RNAh
Mammalian Cell Selection:	Neomycin
Vector:	pCMV6-Entry (PS100001)
E. coli Selection:	Kanamycin (25 ug/mL)



[View online »](#)

**ORF Nucleotide Sequence:**

>RC224541 representing NM\_001014451  
 Red=Cloning site Blue=ORF Green=Tags(s)

TTTTGTAATACGACTCACTATAGGGCGGCCGGAATTCGTCGACTGGATCCGGTACCGAGGAGATCTGCC  
 GCC**CGATCGCC**

ATGGCCACTGACTCATGGCCCTGGCGGTGGACGAGCAGGAAGCTGCGGCTGAGTCGTTGAGCAACTTGC  
 ATCTTAAGGAAGAGAAAATCAAACCAGATACCAATGGTGCTGTTGTCAAGACCAATGCCAATGCAGAGAA  
 GACAGATGAAGAAGAGAAAAGAGGACAGAGCTGCCAGTCCTTACTCAACAAGCTGATCAGAAGCAACCTT  
 GTTGATAACACAAACCAAGTGAAGTCTGCAGCGGGATCCAACTCCCTCTGTACTCGGTGAAGTCTT  
 TTGAAGAGCTTCGGCTCCACAGAACTAATTGCCCAATCTCAGTCTGGTACTGGTAAAACAGCTGCCTT  
 CGTGCTGGCCATGCTTAGCCAAGTAGAACCTGCAAAACAAATACCCCAAGTGTCTATGTCTCTCCCAACG  
 TATGAGCTCGCCCTCAAACAGGAAAAGTATTGAACAAATGGGCAAATTTACCCTGAAGTGAAGCTAG  
 CTTATGCTGTTTCGAGGCAATAAATTGAAAGAGGCCAGAAGATCAGTGAGCAGATTGTCATTGGCACCCC  
 TGGGACTGTGCTGGACTGGTGTCCAAGCTCAAGTTCATTGATCCCAAGAAAATCAAGGTGTTTGTCTG  
 GATGAGGCTGATGTCATGATAGCCACTCAGGGCCACCAAGATCAGAGCATCCGCATCCAGAGGATGCTGC  
 CCAGGAAGTCCAGATGCTGCTTTTCTCCGCCACCTTTGAAGACTCTGTGTGGAAGTTTGCCAGAAAGT  
 GGTCCCAGACCCAAACGTTATCAAACCTGAAGCGTGAGGAAGAGACCCTGGACACCATCAAGCAGTACTAT  
 GTCCTGTGCAGCAGCAGAGACGAGAAGTCCAGGCCTTGTGAACCTCTACGGGGCCATCACCATTGCTC  
 AAGCCATGATCTTCTGCCATACTCGAAAACAGCTAGTTGGTGGCAGCAGAGCTCTCAAAAAGAGGCCA  
 CCAGGTGGCTCTGCTGAGTGGGGAGATGATGGTGAACAGAGGGCTGCAGTGATTGAGCGCTTCCGAGAG  
 GGCAAAGAGAAGGTTTTGGTGACCACCAACGTGTGTGCCCGCGCATTGATGTTGAACAAGTGTCTGTGCG  
 TCATCAACTTTGATCTTCCCGTGGACAAGGACGGGAATCCTGACAAATGAGACCTACCTGCACCGGATCGG  
 GCGCACGGGCGCTTTGGCAAGAGGGGCTGGCAGTGAACATGGTGGACAGCAAGCACAGCATGAACATC  
 CTGAACAGAATCCAGGAGCATTTTAATAAGAAGATAGAAAGATTGGACACAGATGATTTGGACGAGATTG  
 AAAAAATAGCCAAC

**ACGCGT**ACGCGGCCGCTCGAGCAGAACTCATCTCAGAAGAGGATCTGGCAGCAAATGATATCCTGGATT  
 ACAAGGATGACGACGATAAGGTTTAA

**Protein Sequence:**

>RC224541 representing NM\_001014451  
 Red=Cloning site Green=Tags(s)

MATDSWALAVDEQEAAAESLSNLHLKEEKIKPDTNGAVVKTNANAECTDEEEKEDRAAQSLNKLIRSNL  
 VDNTNQVEVLQRDPNSPLYSVKSFEELRLPQNLIAQSQSGTGKTAFLVLAAMLQVEPANKYPOCLCLSP  
 YELALQTGKVIEMGKFYPELKLAYAVRGNKLERGQKISEQIVIGTPGTVDWCSKLFIDPKKIKVFL  
 DEADVMIAATQGHQDQSIRIQRMLPRNCQMLLFSATFEDSVWKFQKVVDPNVIKLRKEETLDTIKQYY  
 VLCSSRDEKFAALCNLYGAIITIAQAMIFCHTRKTASWLAELKEGHQVALLSGEMMVEQRAAVIERFRE  
 GKEKVLVTTNVCARGIDVEQVSVVINFDPVDKDGNDNETYLHRIIGRTGRFGKRGLAVNMVDSKHSMNI  
 LNRIQEHFNKKIERLDTDDLDEIEKIAN

**TR**TRPLEQKLISEEDLAANDILDYKDDDDKV

**Chromatograms:**

[https://cdn.origene.com/chromatograms/mk8060\\_f10.zip](https://cdn.origene.com/chromatograms/mk8060_f10.zip)

**Restriction Sites:**

Sgfl-MluI

**Cloning Scheme:**


**ACCN:** NM\_001014451

**ORF Size:** 1344 bp

**OTI Disclaimer:** The molecular sequence of this clone aligns with the gene accession number as a point of reference only. However, individual transcript sequences of the same gene can differ through naturally occurring variations (e.g. polymorphisms), each with its own valid existence. This clone is substantially in agreement with the reference, but a complete review of all prevailing variants is recommended prior to use. [More info](#)

**OTI Annotation:** This clone was engineered to express the complete ORF with an expression tag. Expression varies depending on the nature of the gene.

**Components:** The ORF clone is ion-exchange column purified and shipped in a 2D barcoded Matrix tube containing 10ug of transfection-ready, dried plasmid DNA (reconstitute with 100 ul of water).

**Reconstitution Method:**

1. Centrifuge at 5,000xg for 5min.
2. Carefully open the tube and add 100ul of sterile water to dissolve the DNA.
3. Close the tube and incubate for 10 minutes at room temperature.
4. Briefly vortex the tube and then do a quick spin (less than 5000xg) to concentrate the liquid at the bottom.
5. Store the suspended plasmid at -20°C. The DNA is stable for at least one year from date of shipping when stored at -20°C.

**Note:** Plasmids are not sterile. For experiments where strict sterility is required, filtration with 0.22um filter is required.

**RefSeq:** [NM\\_001014451.3](#)

**RefSeq Size:** 1738 bp

**RefSeq ORF:** 1347 bp

**Locus ID:** 11269

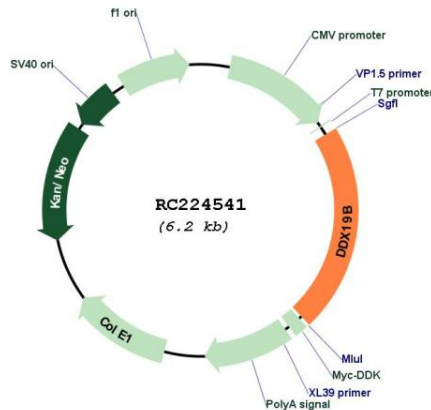
UniProt ID: [Q9UMR2](#)

Cytogenetics: 16q22.1

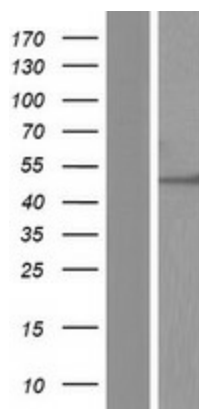
MW: 50.3 kDa

**Gene Summary:** DEAD box proteins, characterized by the conserved motif Asp-Glu-Ala-Asp (DEAD), are putative RNA helicases. They are implicated in a number of cellular processes involving alteration of RNA secondary structure such as translation initiation, nuclear and mitochondrial splicing, and ribosome and spliceosome assembly. Based on their distribution patterns, some members of this family are believed to be involved in embryogenesis, spermatogenesis, and cellular growth and division. This gene encodes a DEAD box protein, which exhibits RNA-dependent ATPase and ATP-dependent RNA-unwinding activities. This protein is recruited to the cytoplasmic fibrils of the nuclear pore complex, where it participates in the export of mRNA from the nucleus. Multiple alternatively spliced transcript variants encoding different isoforms have been found for this gene. [provided by RefSeq, Jul 2008]

**Product images:**



Circular map for RC224541



Western blot validation of overexpression lysate (Cat# [LY423074]) using anti-DDK antibody (Cat# [TA50011-100]). Left: Cell lysates from untransfected HEK293T cells; Right: Cell lysates from HEK293T cells transfected with RC224541 using transfection reagent MegaTran 2.0 (Cat# [TT210002]).