

Product datasheet for **RC224539**

LPP (NM_005578) Human Tagged ORF Clone

Product data:

Product Type:	Expression Plasmids
Product Name:	LPP (NM_005578) Human Tagged ORF Clone
Tag:	Myc-DDK
Symbol:	LPP
Mammalian Cell Selection:	Neomycin
Vector:	pCMV6-Entry (PS100001)
E. coli Selection:	Kanamycin (25 ug/mL)



[View online »](#)

ORF Nucleotide Sequence:

>RC224539 ORF sequence
 Red=Cloning site Blue=ORF Green=Tags(s)

TTTTGTAATACGACTCACTATAGGGCGGCCGGGAATTCGTCGACTGGATCCGGTACCGAGGAGATCTGCC
 GCC**CGGATCGCC**

ATGTCACCCATCTTGGCTGCCACCCAAAAGCACTGGTGGAGCCCTCGGCCATGTGCCTGCACGGATGG
 AGACCACCCATTCTTTGGGAACCCAGCATTTTCAAGTGTCTACACAACAGCCACCCAAAAAGTTTGCCCC
 GGTAGTTGCTCCAAAACCTAAGTACAACCCATACAAAACACTGGAGGTGAGGGTATTTCTTCCACCC
 CCACCTCCACCTTAGATGATTCCAGTGCCTTCCATCTATCTCTGGAACTTTCTCTCCACCACCTC
 TTGATGAAGAGGCTTTCAAAGTACAGGGGAATCCCGGAGGCAAGACACTTGAGGAGAGGCGCTCCAGCCT
 GGACGCTGAGATTGACTCCTTGACCAGCATCTTGGCTGACCTTGAGTGCAGCTCCCCCTATAAGCCTCGG
 CCTCCACAGAGCTCCACTGGTTCAACAGCCTCTCTCCAGTTTCGACCCAGTCACAGGACACAAGAGAA
 TGGTCATCCCGAACCAACCCCTCTAACAGCAACCAAGAAGTCTACATTGAAACACAGCCTGCACCCCA
 GGCTGGACCCATCCCTGTGGCTCCAATCGGAACACTCAAACCCAGCCTCAGCCAGTCCCAGCCTCTAC
 ACCACGGCCTCACTTCTCAAGGCCTACCTTTAATGTGCAGGTGAAGTCAGCCAGCCAGCCCTCATT
 ATATGGCTGCCCTTTCATCAGGACAAATTTATGGCTCAGGGCCCCAGGGCTATAACTCAGCCAGTTCC
 TGTCTCTGGGAGTGTCCACCTCCTTCAACACGGGGAGGCATGGATTATGCCTACATTCCACCACAGGA
 CTTACAGCCGGAGCCTGGGTATGGGTATGCCCCCAACAGGGAGCCTATTATGAAGGCTACTATGCAGCAG
 GGCCAGGCTATGGGGGCAGAAATGACTCTGATCCTACCTATGGTCAACAAGGTCACCCAAATACCTGGAA
 ACGGGAACAGGGTACTCCTCCTGGAGCAGGGAACCAAGCCCTCCTGGGATGATCCAGTCACTGGT
 CCCAAGAAGACCTATATCACAGATCCTGTTTCAGCCCCCTGTGCGCCACCATTGCAGCCAAAGGGTGGCC
 ATTCAGGGCAACTGGGGCCTTCGTGAGTTCCTTTCATTCGCCCCAGAGGATGAGCTTGAGCACCTGAC
 CAAAAAGATGCTGTATGACATGGAAAATCCACCTGCTGACGAATACTTTGGCCGCTGTGCTCGCTGTGGA
 GAAAACGTAGTTGGGGAAGGTACAGGATGCACTGCCATGGATCAGGTCTTCCACGTGGATTGTTTTACCT
 GCATCATCTGCAACAACAAGCTCCGAGGGCAGCCATTCTATGCTGTGGAAAAGAAAGCATACTGCGAGCC
 CTGCTACATTAATACTCTGGAGCAGTGAATGTGTGTTCCAAGCCATCATGGAGCGGATTCTCCGAGCC
 ACCGGGAAGGCCTATCATCCTCACTGTTTCACTGCGTGTGTCACCCAGCCTGGATGGGATCCCAT
 TCACTGTGGATGCTGGCGGGCTCATTCACTGCATTGAGGACTCCACAAGAAATTTGCCCGCGGTGTTT
 TGTGTGCAAGGAGCCTATTATGCCAGCCCCGGCCAGGAGGAGACTGTCCGTATTGTGGCTTTGGATCGA
 GATTTCCATGTTCACTGCTACCGATGCGAGGATTGCGGTGGTCTCTGTCTGAAGGAGATAACCAAGGCT
 GCTACCCCTTGGATGGGCACATCCTCTGCAAGACCTGCAACTCTGCCCGCATCAGGGTGTGACCCCAA
 GCGGAGCACTGACCTT

ACGCGTACGCGGCCGCTCGAGCAGAACTCATCTCAGAAGAGGATCTGGCAGCAAATGATATCCTGGATT
 ACAAGGATGACGACGATAAGGTTTAA

Protein Sequence:

>RC224539 protein sequence
 Red=Cloning site Green=Tags(s)

MSHPSWLPPKSTGEPLGHVPARMETTHSFGNPSISVSTQQPPKFAFVAVPKPKYNPYKQPGGEGDFLPP
 PPPPLDDSSALPSISGNFPPPPPLDEEAFKVQGNPGGKLEERRSSLD AEIDSLTILADLECSSPYKPR
 PPQSSTGSTASPPVSTPVTGHKRMVIPNQPLTATKKSTLKPQAPQAGPIPVAPIGTLKPQPVPASY
 TTASTSSRPTFNVQVKSAPSPHYMAAPSSGQIYGSGPQGYNTQVPVSGQCPPPSTRGGMDYAYIPPPG
 LQPEPGYGYAPNQGRYYEGYYAAGPGYGRNDSPTYGQQGHPNTWKREPGYTPPGAGNQPPGMYPVTG
 PKKTYITDPVSAPCAPPLQPKGGHSGQLGPSVAPSFPRPEDELEHLTKKMLYDMENPPADEYFGRCARCG
 ENVVGEGTGCTAMDQVFHVDFCTCIICNNKLRGQPFYAVEKKAYCEPCYINTLEQCNVCSKPIMERILRA
 TGKAYHPHCFTCVMCHRSLDGIPTVDAGGLIHCIEDFHKKFAPRCSVCKEPIMPAPGQEETVRIVALDR
 DFHVHCYRCEDCGGLLSEGDNQCYPLDGHILCKTCNSARIRVLTAKASTDL

TRTRPLEQKLISEEDLAANDILDYKDDDDKV

Chromatograms:

https://cdn.origene.com/chromatograms/mk6472_b02.zip

Restriction Sites: SgfI-MluI

Cloning Scheme:



ACCN: NM_005578

ORF Size: 1836 bp

OTI Disclaimer: The molecular sequence of this clone aligns with the gene accession number as a point of reference only. However, individual transcript sequences of the same gene can differ through naturally occurring variations (e.g. polymorphisms), each with its own valid existence. This clone is substantially in agreement with the reference, but a complete review of all prevailing variants is recommended prior to use. [More info](#)

OTI Annotation: This clone was engineered to express the complete ORF with an expression tag. Expression varies depending on the nature of the gene.

Components: The ORF clone is ion-exchange column purified and shipped in a 2D barcoded Matrix tube containing 10ug of transfection-ready, dried plasmid DNA (reconstitute with 100 ul of water).

Reconstitution Method:

1. Centrifuge at 5,000xg for 5min.
2. Carefully open the tube and add 100ul of sterile water to dissolve the DNA.
3. Close the tube and incubate for 10 minutes at room temperature.
4. Briefly vortex the tube and then do a quick spin (less than 5000xg) to concentrate the liquid at the bottom.
5. Store the suspended plasmid at -20°C. The DNA is stable for at least one year from date of shipping when stored at -20°C.

RefSeq: [NM_005578.5](#)

RefSeq Size: 18296 bp

RefSeq ORF: 1839 bp

Locus ID: 4026

UniProt ID: [Q93052](#)

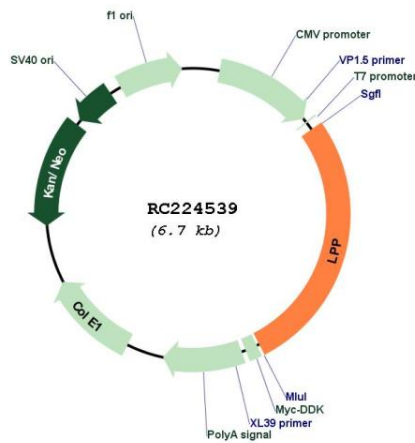
Cytogenetics: 3q27.3-q28

Domains: LIM

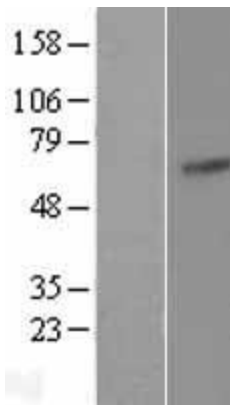
MW: 65.7 kDa

Gene Summary: This gene encodes a member of a subfamily of LIM domain proteins that are characterized by an N-terminal proline-rich region and three C-terminal LIM domains. The encoded protein localizes to the cell periphery in focal adhesions and may be involved in cell-cell adhesion and cell motility. This protein also shuttles through the nucleus and may function as a transcriptional co-activator. This gene is located at the junction of certain disease-related chromosomal translocations, which result in the expression of chimeric proteins that may promote tumor growth. Alternative splicing results in multiple transcript variants. [provided by RefSeq, Jul 2014]

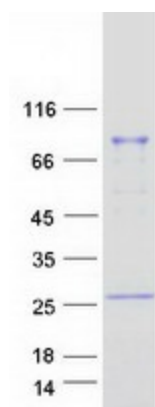
Product images:



Circular map for RC224539



Western blot validation of overexpression lysate (Cat# [LY417214]) using anti-DDK antibody (Cat# [TA50011-100]). Left: Cell lysates from untransfected HEK293T cells; Right: Cell lysates from HEK293T cells transfected with RC224539 using transfection reagent MegaTran 2.0 (Cat# [TT210002]).



Coomassie blue staining of purified LPP protein (Cat# [TP324539]). The protein was produced from HEK293T cells transfected with LPP cDNA clone (Cat# RC224539) using MegaTran 2.0 (Cat# [TT210002]).