

Product datasheet for **RC224538**

TXNDC11 (NM_015914) Human Tagged ORF Clone

Product data:

Product Type:	Expression Plasmids
Product Name:	TXNDC11 (NM_015914) Human Tagged ORF Clone
Tag:	Myc-DDK
Symbol:	TXNDC11
Synonyms:	EFP1
Mammalian Cell Selection:	Neomycin
Vector:	pCMV6-Entry (PS100001)
E. coli Selection:	Kanamycin (25 ug/mL)



[View online »](#)

ORF Nucleotide Sequence:

>RC224538 representing NM_015914
 Red=Cloning site Blue=ORF Green=Tags(s)

TTTTGTAATACGACTCACTATAGGGCGGCCGGGAATTCGTCGACTGGATCCGGTACCGAGGAGATCTGCC
 GCC**CGCATCGCC**

ATGTCGGAATGCGGAGGCCGCGGGCGGCAGCAGCAGCAGCAGGACGCCGAGGACGAGGGAGGGGGCG
 GCGGCGGCCCGGGGCTCAGACTGCCTCAGCTCGAGCCCGACCTGGCCACAGCGTCTCGGGCGGCCG
 GCTCCGTCGCGGGCTGCGTGGCGCTTCTCATGGCGCGCCAGCGGCCGAGCTGCTCTGCGGGGCGGTG
 GCGCTCGGCTGCGCGTCTCTCGCCCTCAAGTTCACCTGCAGTCGAGCAAAAGATGTGATAATACCGAG
 CAAAGCCACCTGTGAGCTTTTTCTCTTGGAGTCTCCAGTCTTGACCTTCCAGGGGACGCTGGATTA
 TGCAGAGTACGTTGACGGGATTCAGAGGTGGTACTGCTCTTCTATGCCCTTGGTGTGGACAGTCC
 ATCGCTGCCAGGGCAGAAATTGAGCAAGCAGCAAGTCGGCTTTCAGATCAGGTGTGTTTGTGGCAATTA
 ACTGTTGGTGAACAGGGGAAATGCAGAAAACAGAAACACTTCTTTATTTTCTGTAATATATCTGTA
 TCATCGGAGTTTTGGACCAATCGAATACAAAGGCCCATGAGTGTGTTTACATTGAGAAGTTTGTCCGC
 CGGGTGATGAAACCACTTCTCTACATCCCATCTCAATCAGAATTACTAGATTTTTCTCAAACACTAGGAGC
 CTGGAGTACTCGGTACTTTGAGTTCAGTGGCTCACCCAGCCTCCTGGTATTTTACCTTCTTACCTC
 AGCATTACATTCATTAAGAAAGATTACCTAGGAACAGTACGATTTGGGGTTATCACAAATAAACATCTT
 GCGAAACTGGTATCCTTAGTACACTCTGGAAGTGTGATTTACATAGACATTTCAACACATCACTTGTCT
 TCCCCAGGGAGGTCTGAACTACACAGCTGAGAACATCTGTAAGTGGGCCTTAGAAAACAGGAGACGCT
 CTTTCGGTGGCTGCGGCCACACGGAGGCAAGAGTCTCTGCTGAATAACGAGCTGAAGAAAGGACCAGCG
 CTGTTCTGTTTCATACCTTTAATCCCCGGCCGAAAGTATCCTTTAATAGACGAGATCACCGAAGTGG
 CTTTGGAGTACAACAACGTGTCATGGGGACAGGTGGTGGAGCGTCTCCTCAGCACCTGCGCGGGTGG
 TGCTCCAGTGTGGAGTCCCTGGCCCTGGAAGTGCCGGCACAGCTGCCAGACCCGCCAACGATCACAGCG
 TCCCCCTGCTGCAACACTGTGGTCTGCCCCAGTGGCACTCCTTCTCAGGACCCACAACGCTCTGTGAAC
 TCTGTGCAACCAGACCTCCGGGGCATGAAGCCGAGCTCGGTGACGCTGCCACAGTGCAGCTTTTTTGA
 AATGGCAGCAGCTCTGGATTCTTTCTACCTCAAGGAGCAGACCTTTTATCATGTGGCATCAGACAGCATA
 GAATGCAGCAATTTTTAACTTCTATAGCCCCTCAGCTACTACACTGCATGTTGCAGGACCATAAGCA
 GGGGTGTGTCAGGCTTCATCGACTCTGAACAAGGTGTCTTTGAAGCCCTACTGTTGCATTTTCTCCCT
 TGAGAAGAAATGTGAGGTTGATGCCCAAGCTCCGTTCTCACATTGAGGAGAACAGGTATCTCTTTCCA
 GAAGTGGACATGACTAGCACAACTTCACAGCCCTGAGCTGCAGAACCAAGACTCTCAACATCTACC
 TTTTGGATTCAAATTTGTTTTGGTTATATGCAGAGAGACTGGGTGCTCCGAGCTCCACTCAGGTGAAAGA
 ATTTGCGCAATTGTTGACGTGAAAGAAGAATCTCATTACATCTTGATCCAAAGCAAGCACTGATGAAG
 CTCACCCTAGAGTCTTTTATTCAAACCTTCAGCGTTCTCTATAGTCCCTTGAAAAGGCATCTCATTGGAA
 GTGGCTCTGCCAGTTCCTGCTCAGCATTTAATCACTGAAGTGACAACCTGATACCTTTTGGGAAGTAGT
 CCTTCAAACAGGACGTTCTCTGCTCTATTACGCTCCGTGGTGGCGCTTCTGTCCATCCCTCAATCAC
 ATCTTCATCCAGCTAGCTCGAACCTGCCATGGACACATTCAGTGTGGCAAGGATTGACGTGTCTCAGA
 ATGACCTCCTTGGGAATTTATGGTCGATCGTCTTCTACTGCTTGTTTTTTCCCTGCAACAGAAAGGA
 CCTAAGTGTGAAATACCCGGAAGACGTCCCCATCACCTTCCAAACCTGTTGAGGTTCAATTTGCATCAC
 TCAGACCCTGCTCCAGCCCCAGAATGTGGCTAACTCTCTACCAAGGAGTGTCTTCCAGAGCGAGGCAG
 TCTTACAGCGGGGCACATCTCCCACTTGAGAGAGAGATCCAGAAACTGAGAGCAGAAATAAGCAGCCT
 CCAGCGAGCACAAGTGCAGGTGGAGTCCAGCTCTCCAGTGCCCGCAGAGATGAGCACCGGCTGCGGCAG
 CAGCAGCGGGCCCTGGAAGAGCAGCACAGCCTGCTCCACGCACACAGTGCAGCAGTGCAGGCCCTATG
 AGCAGAAGACACGTGAGCTGCAGGAGCTGGCCGCAAGCTGCAGGAGCTGGCCGATGCCTCAGAAAACCT
 CCTTACCGAGAACACGTGGCTCAAGATCTGGTGGCGACCATGGAGAGGAACTGGAGGGCAGGGATGGA
 GCTGAAAGCCTGGCGGCCAGAGAGAGGTCCACCCCAAGCAGCCTGAGCCCTCAGCCACCCCCAGCTCC
 CTGGCAGCTCCCCTCCACCTGCCAATGTCAGCGCCACACTGGTGTCTGAAAGGAATAAGGAGAACAGGAC
 AGAC

ACGCGTACGCGGCCGCTCGAGCAGAACTCATCTCAGAAGAGGATCTGGCAGCAAATGATATCCTGGATT
 ACAAGGATGACGACGATAAGGTTTAA

Protein Sequence: >RC224538 representing NM_015914
 Red=Cloning site Green=Tags(s)

MSECGRRGGGSSSEDAEDEGGGGGPPAGSDCLSSSPTLATASSAGRLRRGLRGAFLMARQRPELLCGAV
 ALGCALLLALKFTCSRAKDVIIPAKPPVFFSLRSPVLDLFGQLDYAEYVRRDSEVLLFFYAPWCGQS
 IAARAEIEQAASRLSDQVLFVAINCWVNQKCRKQKHFFYPVVIYLYHRSFGPIEYKGPMSAVYIEKFVR
 RVMKPLLYIPQSSELLDFLSNYEPGVLGYFEFSGSPQPPGYLTFFTSALHSLKKDYLGTVRFVGVITNKKHL
 AKLVSLVHSGSVYLHRHFNTSLVFPREVLNYTAENICKWALENQETLFRWLRPHGGKSLLLNNELKKGPA
 LFLFIPFNPLAESHPLIDEITEVALEYNNCHGDQVVERLLQHLRRVDAPVLESLALEVPAQLPDPPTITA
 SPCCNTVVLPQWHSFSRTHNVCEL CVNQTSGGMKPSVSVQCSFFEMAAALDSFYLKEQTFYHVASDSI
 ECSNFLTSYSPFSYTTACCRITSRGVSGFIDSEQVFEAPTVAFFSLEKKCEVDAPSSVPHIEENRYLFP
 EVDMTSTNFTGLSCRNTKLNIIYLLDSNLFWL YAERLGAPSSTQVKEFAAIVDVKEESHYILDPKQALMK
 LTLESFIQNFVSVLYSPLKRHLIGSGSAQFPSQHLITEVTTDTFWEVVLQKQDVL LLYAPWCGFCPSLNH
 IFIQLARNLPMDFTVARIDVSQNDLPWEFMVDR LPTVLFPCNRKDL SVKYPEDVPITLPNLLRFILHH
 SDPASSQNVANSPTKECLQSEAVLQRGHI SHLEREIQKLR AEISSLQRAQVQVESQLSSARRDEHRLRQ
 QQRAL EEQHSL LHAHSEQLQALYEQKTRELQELARKLQELADASENLLTENTWLKILVATMERKLEGRDG
 AESLAAQREVHPKQPEPSATPQLPGSSPPANVSATLVSERNKENRTD

TRTRPLEQKLISEEDLAANDILDYKDDDDKV

Chromatograms: https://cdn.origene.com/chromatograms/mk8045_b05.zip

Restriction Sites: SgfI-MluI

Cloning Scheme:

Cloning sites used for ORF Shuttling:



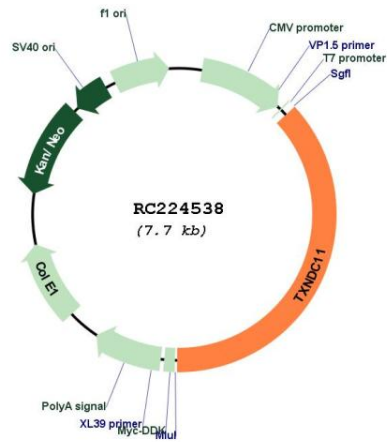
* The last codon before the Stop codon of the ORF

ACCN: NM_015914

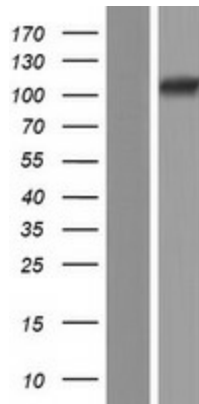
ORF Size: 2874 bp

OTI Disclaimer:	The molecular sequence of this clone aligns with the gene accession number as a point of reference only. However, individual transcript sequences of the same gene can differ through naturally occurring variations (e.g. polymorphisms), each with its own valid existence. This clone is substantially in agreement with the reference, but a complete review of all prevailing variants is recommended prior to use. More info
OTI Annotation:	This clone was engineered to express the complete ORF with an expression tag. Expression varies depending on the nature of the gene.
Components:	The ORF clone is ion-exchange column purified and shipped in a 2D barcoded Matrix tube containing 10ug of transfection-ready, dried plasmid DNA (reconstitute with 100 ul of water).
Reconstitution Method:	<ol style="list-style-type: none">1. Centrifuge at 5,000xg for 5min.2. Carefully open the tube and add 100ul of sterile water to dissolve the DNA.3. Close the tube and incubate for 10 minutes at room temperature.4. Briefly vortex the tube and then do a quick spin (less than 5000xg) to concentrate the liquid at the bottom.5. Store the suspended plasmid at -20°C. The DNA is stable for at least one year from date of shipping when stored at -20°C.
RefSeq:	NM_015914.5 , NP_056998.4
RefSeq Size:	3047 bp
RefSeq ORF:	2877 bp
Locus ID:	51061
UniProt ID:	Q6PKC3
Cytogenetics:	16p13.13
Domains:	thioired
Protein Families:	Druggable Genome
MW:	107.3 kDa
Gene Summary:	May act as a redox regulator involved in DUOX proteins folding. The interaction with DUOX1 and DUOX2 suggest that it belongs to a multiprotein complex constituting the thyroid H(2)O(2) generating system. It is however not sufficient to assist DUOX1 and DUOX2 in H(2)O(2) generation.[UniProtKB/Swiss-Prot Function]

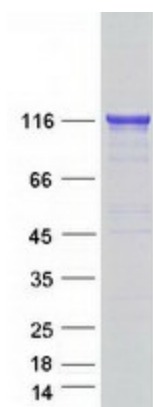
Product images:



Circular map for RC224538



Western blot validation of overexpression lysate (Cat# [LY414317]) using anti-DDK antibody (Cat# [TA50011-100]). Left: Cell lysates from untransfected HEK293T cells; Right: Cell lysates from HEK293T cells transfected with RC224538 using transfection reagent MegaTran 2.0 (Cat# [TT210002]).



Coomassie blue staining of purified TXNDC11 protein (Cat# [TP324538]). The protein was produced from HEK293T cells transfected with TXNDC11 cDNA clone (Cat# RC224538) using MegaTran 2.0 (Cat# [TT210002]).