

Product datasheet for RC224534

SYNRG (NM_007247) Human Tagged ORF Clone

Product data:

Product Type:	Expression Plasmids
Product Name:	SYNRG (NM_007247) Human Tagged ORF Clone
Tag:	Myc-DDK
Symbol:	SYNRG
Synonyms:	AP1GBP1; SYNG
Mammalian Cell Selection:	Neomycin
Vector:	pCMV6-Entry (PS100001)
E. coli Selection:	Kanamycin (25 ug/mL)
ORF Nucleotide Sequence:	>RC224534 representing NM_007247 Red=Cloning site Blue=ORF Green=Tags(s)

TTTTGTAATACGACTCACTATAGGGCGGCCGGGAATTCGTCGACTGGATCCGGTACCGAGGAGATCTGCC
GCC**CGATCGCC**

ATGGCGCTGCGGCCAGGAGCTGGTTCTGGTGGCGGCGGGGCCGCGGGAGCTGGCGGGGTCCGCCGGG
GAGGCGGCTTCATGTTTCTGTTGCAGGTGGGATAAGACCCCTCAAGCAGGCCTGATGCCGATGCAGCA
ACAAGGATTTCTATGGTCTCTGTCATGCAGCCTAATATGCAAGGCATTATGGGAATGAATTACAGCTCT
CAGATGTCCCAAGGACCTATTGCTATGCAGGCAGGAATACCAATGGGACCAATGCCAGCAGCGGGAATGC
CTTACCTAGGACAAGCACCTTCTGGGCATGCGTCCTCCAGGCCACAGTACACTCCAGACATGCAGAA
GCAGTTTGCCGAAGAGCAGCAGAAAACGATTTGAACAGCAGCAAAAACCTTTAGAAGAAGAAAAGAAAGA
CGCCAGTTTGAAGAGCAGAAGCAAAAGCTCAGACTTTTGAGCAGTGTGAAACCAAGACAGGAGAGAAGA
GTAGAGATGATGCTTTGGAGCCATAAAAGGAAATTTAGATGGGTTTTCCAGAGATGCAAAAATGCACCC
TACTCCAGCATCGCACCCCAAGAAACCAGGCCCTTCTTGGAGGAGAAGTTCTAGTATCTTGTGATATA
AGTACATCTGGGCAGGAACAAATTAATTAATACTTCTGAAGTTGGCCACAAAGCCCTAGGCCAGGTT
CCAGTAAGAAGTATCCAGTTTAAATGGCCAGTAACGGGTTGCTGTAGATGGATGTGAAGTGGTACCAC
CACTGCAGAGGCAGAAAATACTTCAGATCAAAACCTGTCAATTGAAGAGAGTGGTGTGGGAGTATTTCCC
TCACAGGATCCTGCTCAGCCCAGAATGCCTCCTGGATTACAATGAGAGTTTGGTCCAGATGCCATA
AGAAAATCTTAGAAACCAATGACTCCAACCTGGAATAGATACTGCCAACTGTATCCCATTCTGATGTC
ATCTGGGCTTCCAGGAAACTCTTGGACAGATATGGGCCTTAGCTAATCGAACTACACCTGGCAAACCT
ACAAAAGAAGAACTTTATACCGTTCTAGCCATGATAGCGGTAACACAGAGGGGCTTCTGCAATGAGTC
CTGATGCTTTAAACAGTTCCAGCAGCTCCTATTCCAACCTTAAAGTGGCTTTTCTAGACTCTGCCTAC
ACCGGTGAGTCAGCCAACGTGATACCTTCAGGTCTGCGGGCTCCATGCCCTCAGCCTTGACAGCCA
GTCATGGGCATTAACCTTGTGGACCAGTGGGTGGAGTCGAGCCAGGCTTCTAGTGGTTTCATACCAA
CCTACCCTGCAAATCAGGTAGTAAAGCCAGAAGAAGATGACTTCCAGGATTTTCAAGATGCTTCAAGTC
AGGATCCCTTGATGACTATTCACTGATTTCCAAGAGTTCCTGCTTCTCAAAAACAAGTAACTCCAG



CATGGAACAGTGCCCTTCTTTGTTGATGCCACTTCCTGGAACATAAGCATTGCCTTCAATGGACAAAT
ATGCTGTGTTAAAGGAATTGCAGCTGACAAGTCTCTGAAAATACTGTTCCACCTGGAGATCCTGGTGA
TAAATATAGTGCTTTAGAGAACTTGAACAGACAGCAGAGAATAAACCTTTAGGAGAAAGCTTTGCAGAA
TTCAGATCTGCAGGAAGTATGATGTTTACCAGATTTTAAAACAGCCGATAGTGTATCACCCTAGAGC
CACCAACAAAAGACAAAACCTTTCCACCATCCTTCCCCTCAGGAATAACAACAGAAACAACAACACA
AGTGAAAAACCTCTGAACCTAGCAGACCTAGATATGTTTTCTCAGTTAATTGCAGCAGCGAGAAACCA
TTGTCTTTTTCAGCTGTGTTAGCACATCAAAATCAGTTTCTACACCACAGTCAACAGGTTCTGTGCTA
CTATGACAGCATTGGCAGCAACAAAACCTTAGTTTGGCTGATGATTTTGGAGAATTCAGCCTTTTTGG
GGAATATTCTGGTCTAGCACCTGTTGGGAGCAGGATGACTTTGCAGATTTTATGGCTTTAGTAATAGC
TCTATTTTCTGAGCAAAAGCCGGATGACAAATATGATGCCCTTAAAGAGGAAGCCAGTCTGTTCCCTC
TAACCAGCAACGTGGGCAGCACAGTGAAGGTGGACAAAACCTCGACTGCTGCGTCTACCAAGTACGATG
CTTCAGACAACCTTCTGGAAGGTCTGGACTAGGTGTTGAAGACCTGAAAGATAACACTCCTTCAGGA
AAAAGTATGATGATTTTCTGACTTCCACTCCAGTAAATTTCTCCATAAACTCGACAAATCCCTGG
GAGAGAAAGCAGTGGCTTTCAGACACACCAAGAAGACTCTGCATCAGTGAAGTCTTAGATCTCCCTTC
CATTGGTGGCAGCAGTGTGGCAAGGAGACTCTGAAGATGCACTCTCTGTTTCTGATGAAATG
GCTGATGTGGGAGGAGATCTTAAGCATGTCATGCTGATAGCTCTTTGGATTTACCAACAGTTAGTGGCC
AGCATCTCTGCTGCAGATATAGAGGACTTAAAATATGCTGCTTTTGGAGCTACAGTAGCAATTTTGC
AGTGAGCACACTTACAAGCTATGACTGGTCCAGACAGGGATGATGCAACTCAGGGCAGAAAACCTCTCCA
TTTGTCTCTCAGCAGGAAGTGGATCCCCTCAGCCACCTCAATCTTCAAAGAAAGAGACTTCATTTG
GCAGTTCTGAAAACATCACCATGACATCTCTCCAAAGTAACGACCTTTGTAAGTGAAGATGCTCTTCC
AGAGACCACCTTCCCAGCTTTGCCAGTTTTAAGACAGATTCTCAGACCAGTGAAGAAAGGAATAT
GAAAACAGAGACTATAAAGATTTCAAAAACAGGACCTGCCTACGGCTGAACGGAGCCAGGAGGCCACGT
GTCCCAGCCAGCGTCCAGTGGTGCCTCTCAAGAAACCCGAACGAATGTTCCGATGACTTTGGAGAGTT
TCAAAGTGAAAAGCCAAAATCAGCAAATTTGACTTCTTAGTAGCCACTTCAAAGCAAAAATGAAATCC
AGTGAAGAAATGATCAAAAGTGAGCTGGCAACCTTTGACCTTTCTGTTCAAGGATCACACAAGAGGAGTT
TGAGCCTTGGTGATAAAGAAATAAGCCGTTCTTCTCCTTCTCCAGCTTTGGAGCAGCCTTTCAGAGACCG
TTCCAATACTCTGAATGAGAAGCCGCCCTGCCCGTCAATCCGAGACAAGTACAAAGACTGACGGGAGAG
GTGGAGGAAAATGAGAGATATGCATATGAATGGCAGAGATGCCTGGGAGTGCCTGAATGTCATTAAGA
AGGCAATGATACCTTAAATGGAATCAGTAGTAGTTCTGTTTGCACAGAAGTAATTCAGTCACTCAAGG
CATGGAATATTTATTAGGTGTTGTTGAAGTGTACAGGTAAACCAAGCGTGTGGAGCTGGGATAAAAGCC
ACTGCAGTGTGCAGTGAAGAACTCCAGCAGTTGCTGAAGGACATCGATAAAGTATGGAATAACCTAATCG
GCTTCATGCTCACTCGCCCACTCACACCAGATGAAAACCTCGCTGGATTTTCTCCTGTATGTTACGGCC
TGGGATAAAAATGCTCAGGAGCTTGCCTGTGGAGTGTGCCTCTTGAATGTGGACTCGAGGAGCCGAAA
GAAGAGAAGCCTGCAGAAGAATCCTAAAAAAGCATTCAACTCAGAAACAGACAGTTTCAAGCTGGCCT
ATGGAGGGCACCAGTATCACGCCAGCTGTGCCAATCTGGATCAACTGTGTCGAACCAAGCCTCCTGG
CCTCGTCTGCCTGACCTGCTC

ACGCGTACGCGGCCGCTCGAGCAGAACTCATCTCAGAAGAGGATCTGGCAGCAATGATATCCTGGATT
ACAAGGATGACGACGATAAGGTTTAA

Protein Sequence: >RC224534 representing NM_007247
 Red=Cloning site Green=Tags(s)

MALRPGAGSGGGGAAGAGAGSAGGGGFMPVAGGIRPPQAGLMPMQQQGFPMVSVMQPNMQGIMGMNYSS
 QMSQGP IAMQAGIPMGMPAAGMPYL GQAPFLGMRPPGPQYTPDMQKQFAEEQQKRFEQQKLEEEERKR
 RQFEEQKQKLRLLSSVKPKTGEKSRDDALEAIKGNLDGFSRDAKMHTPASHPKKPGPSLEEKFLVSCDI
 STSGQEIQIKLNTSEVGHKALGPGSSKKYPSLMA SNGVAVDGCVSGTTTAEAEENTSDQNL SIEESGVGVFP
 SQDPAQPRMPWIYNESLVPDAYKILETTMTPTGIDTAKLYPILMSSGLPRETLGQIWALANRTTPGKL
 TKEELYTVLAMI AVTQRGVPAMSPDALNQFPAAPIPTLSGFSMTLPTPVSQPTVIPS GPAGSMPLSLGQP
 VMGINLVGPVGGAAAQASSGFIPTYPANQVVKPEEDDFQDFQDASKSGSLD D SDFQELPASSKTSNSQ
 HGNSAPSLMPLPGTKALPSMDKYAVFKGIAADKSSSENTVPPGDPGDKYSAFRELEQTAENKPLGESFAE
 FRSAGTDDGFTDFKTADSVSPLEPPTKDKTFPPSFPSGT IQKQQTQVKNPLNLADLDMFSSVNCSEKP
 LSFSAVFSTKSVSTPQSTGSAATMTALAATKTSSLADDFGEFSLFGEYSG LAPVGEQDDFADMAFSNS
 SISSEQKPD KYDALKEEASPVPLTSNVGSTVKGQNSTAASTKYDVFRQLSLEGSGLVEDLKDNTPSG
 KSDDDFADFHSSKFSSINSDKSLGEKAVFRHTKEDSASVKS L D L P S I G G S S V G K E D S E D A L S V Q F D M K L
 ADVGGDLKHVMSDSSLDLPTVSGQHPPAADIEDLK YAAF GSYSSNF AVSTLT SYDWSDRDDATQGRKLS P
 FVL SAGSGSPSATSILQKETSFGSSENITMTSLSKVTTFFVSEDALPETTFPALASFKDTIPQTSEKEY
 ENRDYKDFTKQDLPTAERSQEATCPSPASSGASQETPNECSDDFGEFQSEKPKISKDFL VATSQSKMKS
 SEEMIKSELATFDL SVQGSHKRSLSLGDKEISRSSPSPALEQPFDRSNTLNEKPALPVIRDKYKDLTGE
 VEENERYAYEWQRCLGSALNVIKKANDTLNGISSSSVCTEVIQSAQGM EYLLGVVEVYRVTKRVELGIKA
 TAVCSEKLQQLLKDIDKVVNNLIGFMSLATLTPDENSLDFSSCMLRPGIKNAQELACGVCLLNVDSRSRK
 EEKPAEEHPKAFNSETSFKLAYGGHQYHASCANFWINCVEPKPPGLVLPDLL

TRTRPLEQKLI SEEDLAANDILDYKDDDDKV

Chromatograms: https://cdn.origene.com/chromatograms/mk8045_b06.zip

Restriction Sites: SgfI-MluI

Cloning Scheme:

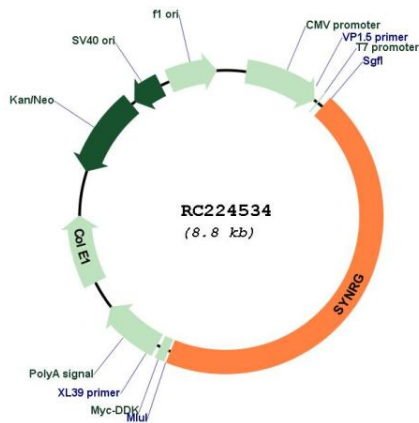


ACCN: NM_007247

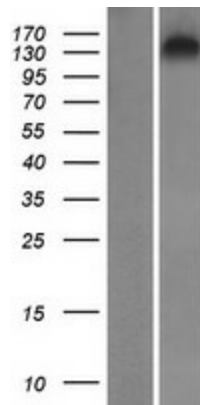
ORF Size: 3942 bp

OTI Disclaimer:	The molecular sequence of this clone aligns with the gene accession number as a point of reference only. However, individual transcript sequences of the same gene can differ through naturally occurring variations (e.g. polymorphisms), each with its own valid existence. This clone is substantially in agreement with the reference, but a complete review of all prevailing variants is recommended prior to use. More info
OTI Annotation:	This clone was engineered to express the complete ORF with an expression tag. Expression varies depending on the nature of the gene.
Components:	The ORF clone is ion-exchange column purified and shipped in a 2D barcoded Matrix tube containing 10ug of transfection-ready, dried plasmid DNA (reconstitute with 100 ul of water).
Reconstitution Method:	<ol style="list-style-type: none">1. Centrifuge at 5,000xg for 5min.2. Carefully open the tube and add 100ul of sterile water to dissolve the DNA.3. Close the tube and incubate for 10 minutes at room temperature.4. Briefly vortex the tube and then do a quick spin (less than 5000xg) to concentrate the liquid at the bottom.5. Store the suspended plasmid at -20°C. The DNA is stable for at least one year from date of shipping when stored at -20°C.
RefSeq:	NM_007247.6
RefSeq Size:	5114 bp
RefSeq ORF:	3945 bp
Locus ID:	11276
UniProt ID:	Q9UMZ2
Cytogenetics:	17q12
Domains:	EH
MW:	140.5 kDa
Gene Summary:	This gene encodes a protein that interacts with the gamma subunit of AP1 clathrin-adaptor complex. The AP1 complex is located at the trans-Golgi network and associates specific proteins with clathrin-coated vesicles. This encoded protein may act to connect the AP1 complex to other proteins. Alternatively spliced transcript variants that encode different isoforms have been described for this gene. [provided by RefSeq, Jul 2008]

Product images:



Circular map for RC224534



Western blot validation of overexpression lysate (Cat# [LY416100]) using anti-DDK antibody (Cat# [TA50011-100]). Left: Cell lysates from untransfected HEK293T cells; Right: Cell lysates from HEK293T cells transfected with RC224534 using transfection reagent MegaTran 2.0 (Cat# [TT210002]).