

Product datasheet for **RC224526**

DNAI4 (NM_024763) Human Tagged ORF Clone

Product data:

Product Type:	Expression Plasmids
Product Name:	DNAI4 (NM_024763) Human Tagged ORF Clone
Tag:	Myc-DDK
Symbol:	DNAI4
Synonyms:	DIC4; WDR78
Mammalian Cell Selection:	Neomycin
Vector:	pCMV6-Entry (PS100001)
E. coli Selection:	Kanamycin (25 ug/mL)



[View online »](#)

**ORF Nucleotide
Sequence:**

>RC224526 ORF sequence
 Red=Cloning site Blue=ORF Green=Tags(s)

TTTTGTAATACGACTCACTATAGGGCGGCCGGGAATTCGTGACTGGATCCGGTACCGAGGAGATCTGCC
 GCC**GCGATCGCC**

ATGACGCCCGGCAAAACATTCCGGAGCCTCGGCCGAGCCGCTAACGCAGGAGCTTGGGGTACAGGGACT
 TCAGAGCGGCCAAAAAAGGGTGGTGGACCCTCCCACTGGTCCGACCATGCCAGTCTCTCCGGC
 AGGCAGTCACAAGCAGCAGAACTTCGGTTGAACAATGCCACACAACAAAGAAGTCTATTAGCTTTTT
 GCTACAATGAAAGCAACTTCAGTAAAGGATATACTGGTGCAAAATCAAAGCAGAATGGTGTGTCCAAAA
 CCGTGCTTATCCACCTGAACTGAAAACCTGTAGAAAAACCAATCCCAATATAAGACAACACAGGTATT
 TGACATAAATGGAAGTGTACTCCCGACCTCTTACCATCCAGATCCACTTACTGGTACAGCAAAA
 CCAAGTAACTCTTGACATCACAAGAAGGATCACTTGGATCAGAATTTATCTTCTATAGCCTTTATC
 AGAATAACAATAAATCCTAGTACGTTAGGCAGTTTACAAGGTCAAGTTTGGGAAGCAGTACAGTTTCTAA
 GTCAAGTGTATCAGCAAGTGAATCAATAGCAGAAGACCTGGAAGAACCCTCTATAAACGGGAAAGATTG
 ACTAGTTTCACAGATTTGCAAGTTATAAGGGCAGCACCTGAAAAAATTGTAAACAAAAGAAGACCTGGAGA
 AGAATATAGAGATAATACTCACAGAGACAGAAACTGAGATTTTTTGACTTGCCACAGTCATGGTCTC
 TGTAGAATCTGAAGAAGCTGAGAAAAGTAACTCAGAGAAAACAAGAATTATGAAGTCTTTGTAGAAACAGA
 TTAGGCAATGACCTATATGTTGAAAGGATGATGCAGACTTTCAATGGAGCACAAAGAATAAAGATGTTT
 AATGTGATAAAATCATAATGGAAGATAAAGGCATAATGTCCACTGCCTGGGATTTGTATGATTCTTACAA
 TGCTATGGAAGTGTATCTTTATCAGTAAAACAATCTGTGGTTGAGTCAAGTAGTAAAGCAAATGTA
 CCTAAAGATCAGGACCAAGATTGCCAGGGAGCACTACAGAAAAAATAGTGAAGTACTTCTCTAATGG
 ACATAGAAAAATGTAATTTGGCAAAAAATCCATGAAGATGAGGAAGCAACTCAGATGCAATATTAATATC
 TGACAAAATTTTCAGGACTTATTTTTTATGGAACGGGTTCTGATGGAAAAATATATTTTCAGCCCAAACTT
 GCAGCTTATCGTCAGCTTCTGTTTTTAAAAAAGCCTGAACCTGAAGAGCCTGAAGATGTTTTAGAAAGTG
 CAAAACATGAAGAGGTAGAGGAAGAATCTAAGAAGGAGGAGGAAGAAGAATAACATGCAGAAGAATCAAC
 AATACCCGCCAAGTTGGAACGACTTTGGTCTTTTTCTGTGACTTAACCAAGGCCTCAATGTGAGCAGC
 CTTGCCTGGAATAAAACAAATCCAGATCTTTGGCTGTTGGCTATGGGCACTTTGGATTTAAAGAGCAAA
 AAAGAGGACTGGCTTGTGCTGGTCAATAAAGAATCCCATGTGCCAGAACGATTTTATCAGAGTCCATA
 TGGAGTACTGCTGTGGATTTTTCAATTGGAGCACCTAACCTTTAGCCGTTGGCTATCACAATGGCACA
 ATTGCAATTTACAATGTACGGAGCAACAGTAATGTTCCAGTTCTGGATAGTAGTGAATCACCTCAAAAC
 ATTTGGGACCTGTATGGCAACTACAGTGGATAGACAAGATCGAGGAACAACAGGAGATGGCAAAAGAGA
 AATACTAGTTTCTATATCAGCAGATGGAAGAATCTCCAAATGGGTTATACGAAAAGGACTAGACTGTTAT
 GATTTGATGCGATTAAGAGAACTACAGCTGCCAGTAACAAAAAGGAGGGGAAAAGGAAAAGAAAGATG
 AAGCTTTGATATCTCGACAGGCTCCTGGAATGTGTTTTGCTTTTCATCCCAAGGACACAAATATCTATTT
 GGCTGGCACTGAAGAAGTCAATTTACAAAATGTTCTTGTTCATATAATGAACAATACTTAGATACCTAC
 AGAGGACATAAAGGTCCAGTGTATAAAGTGACATGGAATCCATTTGTATGATGATTTTTAAGCTGTT
 CTGCAGATTGGGGTGTATTATATGGCAACAGGAGAATGTCAAGCCATCTTTGAGTTTTTATCCAGCTAC
 TTCTGTTGTTACGACGTTGCCTGGTCTCCAAAATCATCTATATATTTGCAGCTGCAAAATGAGAACAGG
 GTGGAGATTTGGACCTTCATATCAGCACTTTGGACCCTCTGATTGTGAATACTGCTAACCTGGAATCA
 AGTTACAAACATTCTTTTCCAAACAAACAGATTGCCTTCTGGTAGGAGACAGTATGACAGGTTTC
 TGTGTATGAACTGAGAAATATGCCTACTGTTTTGGAAACTGGCCGGGAGATATAATGGATACTTTGCTT
 GGATCCAAGTCAAACCAATCAGCA

ACGCGTACGCGGCCGCTCGAGCAGAACTCATCTCAGAAGAGGATCTGGCAGCAATGATATCCTGGATT
 ACAAGGATGACGACGATAAGGTTTAA

Protein Sequence: >RC224526 protein sequence
 Red=Cloning site Green=Tags(s)

MTPGKHS GASARAANAGAWGYRDFRGGQKKGWTTTPQLVATMPVSPAGSHKQQNFGLNNATQPKKISIFF
 ATMKATSVKGYTGANQSRMAVSKTVLIPPELKTVEKPNPIKTTQVFDINGTDVTPRPLYHPDPLTGTA
 PSKLLTSQEGSLGSEFISSYSLYQNTINPSTLGGFTRSVLGSSTVSKSSVASESIAEDLEEPSYKRERL
 TSFTDLQVIRAAPEKIVTKEDLEKNIEIILTETETLRFDFLPTVMVSVSEEEAEKVTQRNKNYEVLCRNR
 LGNDLYVERMMQTFNGAPKNKDVCQDKIIMEDKGI MSTAWDLYDSYNAMELVLSVKQSVVSSSKANVL
 PKDQDQRLPGSTTEKNSETSSLMDIENVILAKIHEDEEDHSDAILKSDKFHQDLFFMERVLMENIFQPKL
 AAYRQLPVLKEPEPEPEDVLES AKHEEVEEESKKEEEEEIHAEESTIPANLERLWSFCDLTKGLNVSS
 LAWNKTNPDLLAVGYGHFGFKEQKRLACCWSIKNPMWPERIYQSPYGVTA VDFSIGAPNLLAVGYHNGT
 IAIYNVRSNSNPVLDSSSQKHLGPVWQLQWIEQDRGTTGDGKREILVSI SADGRISKWVIRKGLDCY
 DLMRLKRRTTAASNKKGGEKEKDEALISRQAPGMCFAFHPKDTNIYLAGTEEGHIIHKSCSYNEQYLDY
 RGHKGPVYKVTWNPFC HDVFLSCSADWGVIIWQQENVKPSLSFY PATSVVYDVAWSPKSSYIFAANENR
 VEIWDLHISTLDPLIVNTANPGIKFTTILFAKQTDCLLVGSDGQVSVYELRNMPTVLETGRGDIMDTLL
 GSKSNQSA

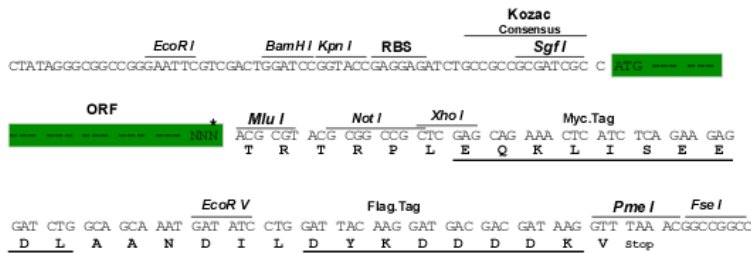
TRTRPLEQKLISEEDLAANDILDYKDDDDKV

Chromatograms: https://cdn.origene.com/chromatograms/mk6466_h05.zip

Restriction Sites: SgfI-MluI

Cloning Scheme:

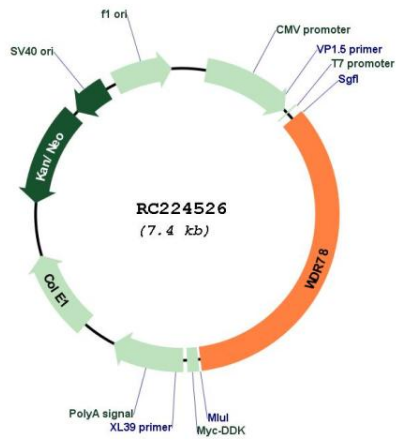
Cloning sites used for ORF Shuttling:



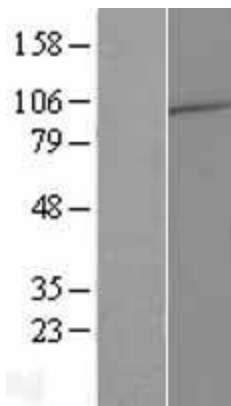
* The last codon before the Stop codon of the ORF

ACCN:	NM_024763
ORF Size:	2544 bp
OTI Disclaimer:	The molecular sequence of this clone aligns with the gene accession number as a point of reference only. However, individual transcript sequences of the same gene can differ through naturally occurring variations (e.g. polymorphisms), each with its own valid existence. This clone is substantially in agreement with the reference, but a complete review of all prevailing variants is recommended prior to use. More info
OTI Annotation:	This clone was engineered to express the complete ORF with an expression tag. Expression varies depending on the nature of the gene.
Components:	The ORF clone is ion-exchange column purified and shipped in a 2D barcoded Matrix tube containing 10ug of transfection-ready, dried plasmid DNA (reconstitute with 100 ul of water).
Reconstitution Method:	<ol style="list-style-type: none">1. Centrifuge at 5,000xg for 5min.2. Carefully open the tube and add 100ul of sterile water to dissolve the DNA.3. Close the tube and incubate for 10 minutes at room temperature.4. Briefly vortex the tube and then do a quick spin (less than 5000xg) to concentrate the liquid at the bottom.5. Store the suspended plasmid at -20°C. The DNA is stable for at least one year from date of shipping when stored at -20°C.
RefSeq:	NM_024763.3 , NP_079039.3
RefSeq Size:	3871 bp
RefSeq ORF:	2547 bp
Locus ID:	79819
UniProt ID:	Q5VTH9
Cytogenetics:	1p31.3
MW:	94.7 kDa
Gene Summary:	Plays a critical role in the assembly of axonemal dynein complex, thereby playing a role in ciliary motility.[UniProtKB/Swiss-Prot Function]

Product images:



Circular map for RC224526



Western blot validation of overexpression lysate (Cat# [LY411076]) using anti-DDK antibody (Cat# [TA50011-100]). Left: Cell lysates from untransfected HEK293T cells; Right: Cell lysates from HEK293T cells transfected with RC224526 using transfection reagent MegaTran 2.0 (Cat# [TT210002]).