

Product datasheet for **RC224524**

MICALCL (NM_032867) Human Tagged ORF Clone

Product data:

| | |
|---------------------------|--|
| Product Type: | Expression Plasmids |
| Product Name: | MICALCL (NM_032867) Human Tagged ORF Clone |
| Tag: | Myc-DDK |
| Symbol: | MICALCL |
| Synonyms: | Ebitein1 |
| Mammalian Cell Selection: | Neomycin |
| Vector: | pCMV6-Entry (PS100001) |
| E. coli Selection: | Kanamycin (25 ug/mL) |



[View online »](#)

ORF Nucleotide Sequence:

>RC224524 representing NM_032867
 Red=Cloning site Blue=ORF Green=Tags(s)

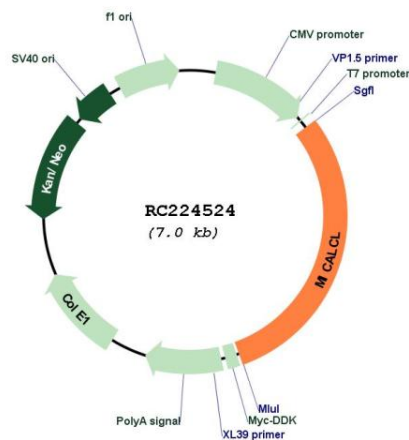
TTTTGTAATACGACTCACTATAGGGCGGCCGGGAATTCGTCGACTGGATCCGGTACCGAGGAGATCTGCC
 GCC**CGGATCGCC**

ATGTCACCTCCTAAGGACCTTCTCCTTCTCCTTCTCCTTCCATCGTCTTCCCATTATCTTCCCAC
 CATCTTCTTCTCAACCAAGTGTCTGGGAATGCTCCAGATGGTTCTCCCCGCCTCAGATGACAGCTTC
 TGAGCCCCCTCGCAAGTCTCGAGAGGTATCCAGTCTCCACCCCAAACCTTCGAGGCGAGCCGTA
 GCCCAAGGAGCACCCAGGAAATCCCCTGTATCTGCCTCATCACCCAAAGCCAGAGTGGGCAGAGTACT
 GCCTGGTGAAGTGGCCTCTCAGACCTGCAGAGATGACTTCTGATGAGTCCAGCCAGC
 AGAGGCCCTCTGGGGACATCGGAAGCAACCACAGAGACCCACCCCATCTGGGGGAAGGACAGGAGC
 TGGACAGGGCAAGAGCTATCTCCCTGGCTGGAGAAGACCGGAAAAAGGGAGTACTGGAGCCAGGAAGG
 AAGAAGAGGGAGGCCAGTGTGGTAAAGGAGAAGTTGGGCTGAAGAAGTTAGTCTCACTCAGGAGCA
 GAAGACCATGTTGTTGGATTGGAATGACTCCATCCCTGAGAGTGTGCACCTCAAAGCTGGGAGCGAATT
 TCCAGAAAAAGTCTGAGAATGGTAGAGAGGCCGTGTGCTAAAACCAAGTCCGCCCTGCTGCTCCCTA
 GGGCAGCAGGAGAGCCCTGCCAACCCAGAGAGGGGCCAGGAGAAGATGGGACCCCTGCGGAACAAGC
 TCAAGGGGAGCGAAACGTGCCTCCACCCAAAGTCCCCTACTGCGGCTCATAGCCAATGCCATCCGAAGTCT
 CTAGAGCCCTCTTCCAACCTGAAGGCGGGAAGAAGGCTGGGCCAAGCAAGAATCCAAAACCTTTCG
 CCGCACAGGCTGCACTCGCTCATTAGCCTTCGAAAACCAATTCAAATAAAGACGGGGACCAGCATT
 CCCTGGGAGAAACCAAGTCTCAGCCTTAGCCCTCCTGACCTGCCCTCCGACCCACAGTTTGCCTAAT
 CGGCCATCCAAGTCTTCTCAGCTTAGTCCCACCTGCAGCAAGATTGAAGATGTCCACACTCC
 TCGAGAAAAGTGAAGTTCGAAGAGAACTCCCAGATGCTTCTAAGCCTCAAAGAAAAAGAAATCTCACTTTT
 TTCTCCCTCAGACTCAAAGACAAATCTTTGAGAGTTTCTCCAAGAATCCAGACAAAGAAAGGACATC
 AGGGACCTCTTGGCAGCCCAAGAGGAAGGTGCTGCCTGAAGATAGTGCAGGAGCCCTGGAGAAGTGC
 TGCAGCTTTCAAAGCACCTCCCTGCGCCAGGCAGCTCCTCCTCCTCCTCCTCCTCCTCCTCCTCCTC
 TCCTCCTCCTACAGCGGGAGGTGCAGACTCCAAGAACTTCCCCTCAGAGCACAGGTAACAGAGGCTTCC
 TCTTCTGCCTCTTCAACCTCCTCCTCCTCCTGCAGATGAAGAAATTTGATCCCCAGCTTTCTTGCAGTTAA
 AGGAGAAGAAGACTTAGAAGAAGAAGAAGCTAGAAAAAGCAATGAAGCAGTTGGTTAAGCAAGAAGA
 ATTGAAAAGACTCTATAAGGCTCAGGCCATCCAGAGGCAGCTGGAGGAGGTGGAGGAGCGGCAGAGGGCT
 TCTGAGATCCAGGTTGTGAGGCTGGAGAAGGCGTTGCGAGGAGAAGCAGATTCAGGCACACAGGATGAAG
 CACAGCTTTTGCAGGAATGGTTAAGCTGGTTCTGGAGAAGAATAAATTAATGCGATATGAGTCGGAGCT
 CCTAATCATGGCCAGGAAGTGAATTAGAAGATCATCAAAGCAGACTGGAGCAGAAACTGAGAGAGAAA
 ATGCTCAAGGAGGAGAGCCAGAAAGATGAGAAGGATCTAAACGAAGAGCAAGAAGTATTCACCGAGCTGA
 TGCAAGTGATTGAGCAAAGGGACAAACTCGTCGATTCTTAGAGGAACAACGCATCAGAGAAAAAGCCGA
 GGACCAGCACTTTGAAAGCTTCGATTCTCCAGAGGCTGTCAGCTGAGCAGGACT

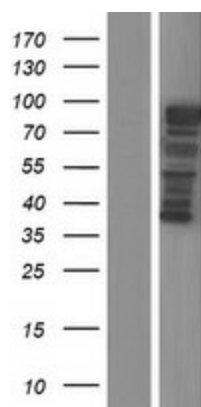
ACGCGTACGCGGCCGCTCGAGCAGAAACTCATCTCAGAAGAGGATCTGGCAGCAATGATATCCTGGATT
 ACAAGGATGACGACGATAAGGTTTAA

| | |
|-------------------------------|---|
| Components: | The ORF clone is ion-exchange column purified and shipped in a 2D barcoded Matrix tube containing 10ug of transfection-ready, dried plasmid DNA (reconstitute with 100 ul of water). |
| Reconstitution Method: | <ol style="list-style-type: none">1. Centrifuge at 5,000xg for 5min.2. Carefully open the tube and add 100ul of sterile water to dissolve the DNA.3. Close the tube and incubate for 10 minutes at room temperature.4. Briefly vortex the tube and then do a quick spin (less than 5000xg) to concentrate the liquid at the bottom.5. Store the suspended plasmid at -20°C. The DNA is stable for at least one year from date of shipping when stored at -20°C. |
| RefSeq: | NM_032867.3 |
| RefSeq Size: | 3044 bp |
| RefSeq ORF: | 2088 bp |
| Locus ID: | 84953 |
| UniProt ID: | Q6ZW33 |
| Cytogenetics: | 11p15.3 |
| Protein Families: | Protease |
| MW: | 77.1 kDa |
| Gene Summary: | May cooperate with MAPK1/ERK2 via an intracellular signal transduction pathway in the morphogenetic development of round spermatids to spermatozoa. May act as Rab effector protein and play a role in vesicle trafficking.[UniProtKB/Swiss-Prot Function] |

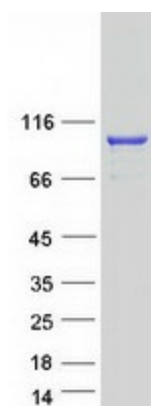
Product images:



Circular map for RC224524



Western blot validation of overexpression lysate (Cat# [LY409900]) using anti-DDK antibody (Cat# [TA50011-100]). Left: Cell lysates from untransfected HEK293T cells; Right: Cell lysates from HEK293T cells transfected with RC224524 using transfection reagent MegaTran 2.0 (Cat# [TT210002]).



Coomassie blue staining of purified MICALCL protein (Cat# [TP324524]). The protein was produced from HEK293T cells transfected with MICALCL cDNA clone (Cat# RC224524) using MegaTran 2.0 (Cat# [TT210002]).