

## Product datasheet for RC224520

### VIP (NM\_194435) Human Tagged ORF Clone

#### Product data:

Product Type: Expression Plasmids  
 Product Name: VIP (NM\_194435) Human Tagged ORF Clone  
 Tag: Myc-DDK  
 Symbol: VIP  
 Synonyms: PHM27  
 Mammalian Cell Selection: Neomycin  
 Vector: pCMV6-Entry (PS100001)  
 E. coli Selection: Kanamycin (25 ug/mL)  
 ORF Nucleotide Sequence: >RC224520 ORF sequence  
 Red=Cloning site Blue=ORF Green=Tags(s)

TTTTGTAATACGACTCACTATAGGGCGGCCGGAATTCGTCGACTGGATCCGGTACCGAGGAGATCTGCC  
 GCC**CGATCGCC**

ATGGACACCAGAAATAAGGCCAGCTCCTTGTGCTCCTGACTCTTCTCAGTGTGCTCTTCTCACAGACTT  
 CGGCATGGCCTTTTACAGGGCACCTTCTGCTCTCAGGTTGGGTGACAGAATACCCTTTGAGGGAGCAAA  
 TGAACCTGATCAAGTTTCATTAAGAAGACATTGACATGTTGCAAAATGCATTAGCTGAAAATGACACA  
 CCCTATTATGATGTATCCAGAAATGCCAGGCATGCTGATGGAGTTTTCCAGTGACTTCAGTAACTCT  
 TGGGTCAACTTTCTGCCAAAAAGTACCTTGAGTCTTTATGGGAAAACGTGTAGTAACATCTCAGAAGA  
 CCCTGTACCAGTCAAACGCTCACTCAGATGAGTCTTCACTGACAACTATACCCGCCTTAGAAAACAATG  
 GCTGTAAGAAATATTTGAACTCAATTCTGAATGGAAAGAGGAGCAGTGAGGGAGAATCTCCCGACTTTC  
 CAGAAGAGTTAGAAAA

**ACGCGT**ACGCGGCCGCTCGAGCAGAAACTCATCTCAGAAGAGGATCTGGCAGCAATGATATCCTGGATT  
 ACAAGGATGACGACGATAAGGTTTAA

Protein Sequence: >RC224520 protein sequence  
 Red=Cloning site Green=Tags(s)

MDTRNKAQLLVLLTLLSVLFSQTSAWPLYRAPSALRLGDRIPFEGANEPDQVSLKEDIDMLQNALAENDT  
 PYYDVSRNARHADGVFTSDFSKLLGQLSAKKYLESIMGKRVSNI SEDPVPVKRHSDAVFTDNYTRLRKQM  
 AVKKYLNSILNGKRSSEGESPDFPEELEK

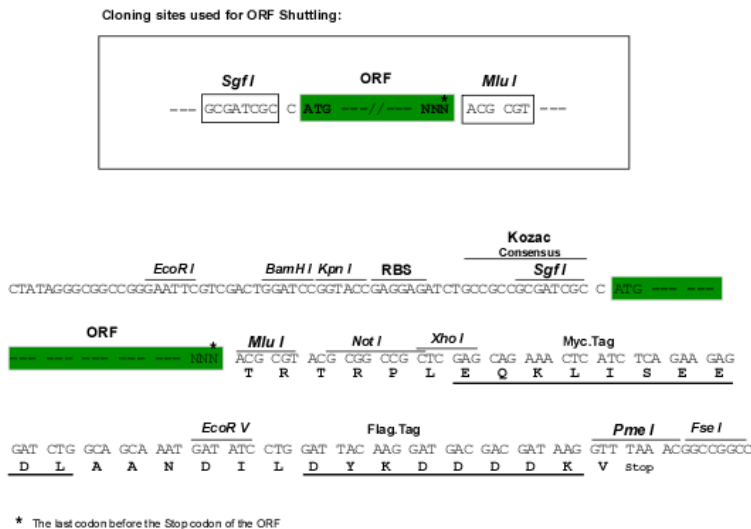
**TR**TRPLEQKLISEEDLAANDILDYKDDDDKV

Chromatograms: [https://cdn.origene.com/chromatograms/mk6434\\_b03.zip](https://cdn.origene.com/chromatograms/mk6434_b03.zip)



Restriction Sites: SgfI-MluI

Cloning Scheme:



ACCN: NM\_194435

ORF Size: 507 bp

OTI Disclaimer: The molecular sequence of this clone aligns with the gene accession number as a point of reference only. However, individual transcript sequences of the same gene can differ through naturally occurring variations (e.g. polymorphisms), each with its own valid existence. This clone is substantially in agreement with the reference, but a complete review of all prevailing variants is recommended prior to use. [More info](#)

OTI Annotation: This clone was engineered to express the complete ORF with an expression tag. Expression varies depending on the nature of the gene.

Components: The ORF clone is ion-exchange column purified and shipped in a 2D barcoded Matrix tube containing 10ug of transfection-ready, dried plasmid DNA (reconstitute with 100 ul of water).

Reconstitution Method:

1. Centrifuge at 5,000xg for 5min.
2. Carefully open the tube and add 100ul of sterile water to dissolve the DNA.
3. Close the tube and incubate for 10 minutes at room temperature.
4. Briefly vortex the tube and then do a quick spin (less than 5000xg) to concentrate the liquid at the bottom.
5. Store the suspended plasmid at -20°C. The DNA is stable for at least one year from date of shipping when stored at -20°C.

RefSeq: [NM\\_194435.3](#)

RefSeq Size: 1598 bp

RefSeq ORF: 510 bp

Locus ID: 7432

UniProt ID: [P01282](#)

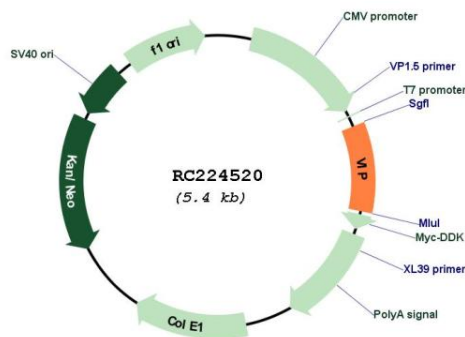
**Cytogenetics:** 6q25.2

**Protein Families:** Druggable Genome, Secreted Protein, Transmembrane

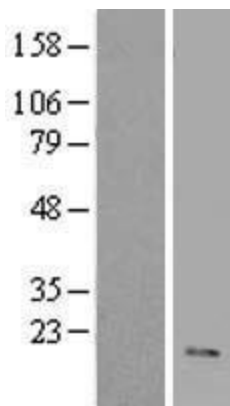
**MW:** 19.1 kDa

**Gene Summary:** The protein encoded by this gene belongs to the glucagon family. It stimulates myocardial contractility, causes vasodilation, increases glycogenolysis, lowers arterial blood pressure and relaxes the smooth muscle of trachea, stomach and gall bladder. The protein also acts as an antimicrobial peptide with antibacterial and antifungal activity. Alternative splicing occurs at this locus and two transcript variants encoding distinct isoforms have been identified. [provided by RefSeq, Nov 2014]

**Product images:**



Circular map for RC224520



Western blot validation of overexpression lysate (Cat# [LY405128]) using anti-DDK antibody (Cat# [TA50011-100]). Left: Cell lysates from untransfected HEK293T cells; Right: Cell lysates from HEK293T cells transfected with RC224520 using transfection reagent MegaTran 2.0 (Cat# [TT210002]).