

Product datasheet for RC224518

PXDN (NM_012293) Human Tagged ORF Clone

Product data:

Product Type:	Expression Plasmids
Product Name:	PXDN (NM_012293) Human Tagged ORF Clone
Tag:	Myc-DDK
Symbol:	PXDN
Synonyms:	ASGD7; COPOA; D2S448; D2S448E; MG50; PRG2; PXN; VPO
Mammalian Cell Selection:	Neomycin
Vector:	pCMV6-Entry (PS100001)
E. coli Selection:	Kanamycin (25 ug/mL)
ORF Nucleotide Sequence:	>RC224518 representing NM_012293 Red=Cloning site Blue=ORF Green=Tags(s)

TTTTGTAATACGACTCACTATAGGGCGCCGGGAATTCGTCGACTGGATCCGGTACCGAGGAGATCTGCC
GCC**CGATCGCC**

ATGGCCAAGCGCTCCAGGGGCCCGGGCGCCGCTGCCTGTTGGCGCTCGTGCTGTTCTGCGCCTGGGGGA
CGCTGGCCGTGGTGGCCAGAAGCCGGGCGCAGGGTGTCCGAGCCGCTGCCTGTGCTTCCGACCCACCGT
GCGCTGCATGCATCTGCTGCTGGAGGCCGTGCCGCCGTGGCGCCGAGACCTCCATCCTAGATCTTCGC
TTAACAGAATCAGAGAGATCCAACCTGGGGCATTGAGCGGCTGAGGAACCTGAACACATTGCTTCTCA
ATAATAATCAGATCAAGAGGATACCTAGTGGAGCATTTGAAGACTTGAAAATTTAAAATATCTCTATCT
GTACAAGAATGAGATCCAGTCAATTGACAGGCAAGCATTTAAGGGACTTGCTCTCTAGAGCAACTATAC
CTGCACCTTAATCAGATAGAAAATTTGGACCCAGATTCGTTCCAGCATCTCCCGAAGCTCGAGAGGCTAT
TTTTGCATAACAACCGGATTACACATTTAGTTCAGGGACATTTAATCACTTGGAATCTATGAAGAGATT
GCGACTGGACTCAAACACACTTCACTGCGACTGTGAAATCCTGTGGTTGGCGGATTTGCTGAAAACCTAC
GCGGAGTCGGGGAACGCGCAGGCAGCGGCCATCTGTGAATATCCAGACGCATCCAGGGACGCTCAGTGG
CAACCATCACCCCGGAAGAGCTGAACTGTGAAAGGCCCGGATCACCTCCGAGCCCCAGGACGCAGATGT
GACCTCGGGGAACACCGTGTACTTCACTGCAGAGCCGAAGGCAACCCCAAGCCTGAGATCATCTGGCTG
CGAAACAATAATGAGCTGAGCATGAAGACAGATTCCCGCCTAAACTTGTGGACGATGGACCCCTGATGA
TCCAGAACACACAGGAGACAGACCAGGGTATCTACCAGTGCATGGCAAAGAACGTGGCCGGAGAGGTGAA
GACGCAAGAGGTGACCCTCAGGTAATTCGGGTCTCCAGCTCGACCCACTTTTGTAAATCCAGCCACAGAAT
ACAGAGGTGCTGGTTGGGAGAGCGTCACGCTGGAGTGCAGCGCCACAGGCCACCCCGCCGGATCT
CCTGGACGAGAGGTGACCGCACACCCCTTCCAGTTGACCCGCGGGTGAACATCACGCCTTCTGGCGGGCT
TTACATACAGAACGTCGTACAGGGGACAGCGGAGAGTATGCGTGCTCTGCGACCAACAACATTGACAGC
GTCCATGCCACCGCTTTCATCATCGTCCAGGCTTTCCTCAGTTCAGTGTGACGCCTCAGGACAGAGTGC
TTATTGAGGGCCAGACCGTGGATTTCCAGTGTGAAGCCAAGGGCAACCCCGCCCGTCTCGCCTGGAC
CAAGGGAGGGAGCCAGCTCTCCGTGACCGCGGCACCTGGTCTGTCTCGGGAACACTTGAATCTCT



View online »

GGTGTGCCCTCCACGACCAGGGCCAGTACGAATGCCAGGCTGTCAACATCATCGGCTCCCAGAAGGTCG
TGGCCACCTGACTGTGCAGCCAGAGTCACCCAGTGTGGCCAGCATTCCCAGCGACACAACAGTGGA
GGTGGGCGCCAATGTGCAGCTCCCGTGCAGCTCCCAGGGCGAGCCGAGCCAGCCATCACCTGGAACAAG
GATGGGGTTTCAGGTGACAGAAAGTGAAATTTACATCAGCCCTGAAGGATTCTTGACCATCAATGACG
TTGGCCCTGCAGACGCAGGTCGCTATGAGTGTGTGGCCCGGAACACCATTGGGTCGGCCTCGGTGAGCAT
GGTGTTCAGTGTGAATGTTCTGACGTCAGTCGAAATGGAGATCCGTTTGTAGCTACCTCCATCGTGGAA
GCGATTGCGACTGTTGACAGAGCTATAAACTCAACCCGAACACATTTGTTTGGACGCCGCTCGTCTCTC
CAAATGATTTGCTGGCCTTGTCCGGTATCCGAGGGATCCTTACACAGTTGAACAGGCACGGGCGGGAGA
AATCTTTGAACGACATTGCAGCTCATTAGGAGCATGTACAGCATGGCTTGATGGTCGACCTCAACGGA
ACAAGTTACCACTACAACGACCTGGTGTCTCCACAGTACCTGAACCTCATCGAAACCTGTGGGGTGT
CCGCCACCGGCGGTGAACAACGCTCGGACATGTGCTTCCACCAGAAGTACCGGACGCACGACGGCAC
CTGTAACAACCTGCAGCACCCCATGTGGGGCGCCTCGCTGACCGCCTCGAGCGCCTGCTGAAATCCGTG
TACGAGAATGGCTTCAACACCCCTCGGGGCATCAACCCACCGACTGTACAACGGGCACGCCCTCCCA
TGCCGCGCCTGGTGTCCACCACCTGATCGGGACGGAGACCGTCACACCCGACGAGCAGTTCACCCACAT
GCTGATGCAGTGGGGCCAGTTCTTGACCACGACCTCGACTCCACGGTGGTGGCCCTGAGCCAGGCACGC
TTCTCCGACGGACAGCACTGCAGCAACGTGTGCAGCAACGACCCCCCTGCTTCTGTGATGATCCCC
CCAATGACTCCCGGGCCAGGAGCGGGGCCGCTGCATGTTCTTGTGCGCTCCAGCCCTGTGTGGCGCAG
CGGCATGACTTCGCTGCTCATGAACTCCGTGTACCCGCGGGAGCAGATCAACCAGCTCACCTCTACATA
GACGCATCCAACGTGTACGGGAGCAGGAGCATGAGGCCCGCAGCATCCGCGACCTGGCCAGCCACCGCG
GCCTGTGCGGCAGGGCATCGTGCAGCGGTCCGGGAAGCCGCTGCTCCCTTCGCCACCGGGCCGCCAC
GGAGTGCATGCGGGACGAGAACGAGAGCCCATCCCTGCTTCTTGCCGGGGACCACCGCCCAACGAG
CAGCTGGGCTGACCAGCATGCACACGCTGTGGTTCGCGAGCACAAACCGATTGCCACGGAGTGTCTCA
AGCTGAACCCGCACTGGGACGGGACACCATCTACTATGAGACAGGAAGATCGTGGTGGGAGATCCA
GCACATCACCTACCAGCACTGGCTCCCGAAGATCCTGGGGAGGTGGGCATGAGGACCTGGGAGAGTAC
CACGGCTACGACCCCGCATCAATGCTGGCATCTTCAACGCCTTCGCCACCGCGCCCTTACGTTTGGCC
ACACGCTTGTCAACCCACTGCTTACCAGCTGGACGAGAATTCCAGCCATTGCACAAGATCACCTCCC
CCTTACAAAAGCTTTCTTCTCCCTTCCGGATTGTGAATGAGGGCGGCATCGATCCGCTTCTCAGGGG
CTGTTCCGGGTGGCGGGGAAAATGCGTGTGCCCTCGCAGCTGCTGAACACGGAGCTCACGGAGCGGTGT
TCTCCATGGCACACACGGTGGCTCTGGACTGGCGCCATCAACATCCAGCGGGCCGGGACCACGGGAT
CCCACCTACCAGACTACAGGGTCTACTGCAATCTATCGGCGGCACACAGTTCGAGGACCTGAAAAAT
GAGATTAACCCCTGAGATCCGGGAGAACTGAAAAGTTGTATGGCTCGACACTCAACATCGACCTGT
TTCCGGCGCTCGTGGTGGAGACCTGGTGCCTGGCAGCCGGCTGGGCCCCACCCTGATGTGCTTCTCAG
CACACAGTTCAAGCGCCTGCGAGATGGGGACAGTTGTGGTATGAGAACCCTGGGGTGTCTCCCGGCC
CAGCTGACTCAGATCAAGCAGAGCTCGCTGGCCAGGATCCTATGCGACAACGCGGACAACATCACCCGGG
TGCAGAGCGACGTGTTACGGGTGGCGGAGTTCCCTCACGGCTACGGCAGCTGTGACGAGATCCCCAGGGT
AGACCTCCGGGTGTGGCAGGACTGCTGTGAAGACTGTAGGACCAGGGGCGAGTTCAATGCCTTTTCTAT
CATTTCCGAGGCAGACGGTCTCTTGAGTTCAGTACCAGGAGGACAAGCCGACCAAGAAAACAAGACCAC
GGAAAAATCCCAAGTGTGGGAGACAGGGGAACATCTCAGCAACAGCACCTCAGCCTTACGACACGCTC
AGATGCATCTGGGACAAATGACTTCAGAGAGTTTGTCTGAAAATGCAGAAGACCATCACAGACCTCAGA
ACACAGATAAAGAACTTGAATCACGGCTCAGTACCACAGAGTGCCTGGATGCCGGGGGGAATCTCAGC
CCAACAACACCAAGTGGAAAAAAGATGCATGCACCATTTGTGAATGCAAAGACGGGCAGGTACCTGCTT
CGTGGAAGCTTGGCCCCCTGCCACCTGTGCTGTCCCGTGAACATCCCAGGGCCTGCTGTCCAGTCTGC
TTACAGAAGAGGGCGGAGGAAAAGCCC

ACGCGTACGCGGCCGCTCGAGCAGAACTCATCTCAGAAGAGGATCTGGCAGCAATGATATCCTGGATT
ACAAGGATGACGACGATAAGGTTTAA

Protein Sequence: >RC224518 representing NM_012293
 Red=Cloning site Green=Tags(s)

MAKRSRGPGRRCLLALVLFCAWGLAVVAQKPGAGCPSRCLCFRTTVRCMHLLLEAVPAVAPQTSILDLR
 FNRIREIQPGAFRRRLNRLNTLLNANNQIKRIPSGAFEDLENLKYLYKNEIQSIDRQAFKGLASLEQLY
 LHFNQIETLDPDSFQHLPKLERLFLHNNRITHLVPGTFNHLESMKRLRLDSNTLHCDCEILWLADLLKTY
 AESGNAQAAAICEYPRRIQGRSVATITPEELNCERPRITSEPQDADVTSGNTVYFTCRAEGNPKPEIIWL
 RNNNELSMKTDSRLNLLDDGTLMIQNTQETDQGIYQCMKNAVAGEVKTQEVTLRYFGSPARPTFVIQPQN
 TEVLVGESVTLECSATGHPPPRI SWTRGDRTPLVDPVNIPTPSGGLYIQNVVQGDSEYACSATNNIDS
 VHATAFIIVQALPQFTVTPQDRVVEGQTVDFQCEAKGNPPPVI AWTKGGSQLSVDRRHLVLSGTLRIS
 GVALHDQGYEQAVNIIGSQKVV AHLTVQPRVTPVFASIPSDTTVEVGANVQLPCSSQGEPEPAITWNK
 DGVQVTESGKFHISPEGFLTINDVGPADAGRYECVARNTIGSASVSMVLSVNVDPVSRNGDPFVATSIVE
 AIATVDRAINSTRHLFDSRPRSPNDLLALFRYPRDPYVEQARAGEIFERTLQLIQEHVQHGLMVDLNG
 TSYHYNDLVSPQYLNLIANLSGCTAHRVNNCSDMCFHQKYRTHDGTNNLQHPMMWASLTAFERLLKSV
 YENGFNTPRGINPHRLYNGHALPMPRLVSTTLIGTETVTPDEQFTHMLMQWGQFLDHDLDSTVVALSQAR
 FSDGQHCNSVCSNDPPCF SVMIPPNSRARSARGARCMFFVRS SPVCGSGMTSLLMNSVYPREQINQLTSYI
 DASNVYGSSTEHEARSIRDLASHRGLLRQGIYQVRSKGKPLLPFATGPPTTECMRDENESPIPCFLAGDHRANE
 QLGLTSMHTLWFREHNRIATELLKLNPHWDGDTIYYETRKIVGAEIQHITYQHWPILKEVGMRTLGEY
 HGYDPGINAGIFNAFATAAFRFGHTLVNPLL YRLDENFQPIAQDHLPLHKAFFSPFRIVNEGGIDPLL RG
 LFGVAGKMRVPSQLNTELTERLFSMAHTVALDLAAINIQRGRDHGIPPYHDIRVYCNLSAHTFEDLKN
 EIKNPEIREKLRKLYGSTLNIDLFPALVVEDLVPGSRLGPTLMCLLSTQFKRLRDGDRLYWENPGVFS PA
 QLTQIKQTSLARILCDNADNITRVQSDVFRVAEFPHGYGSCDEIPRVDLRVWQDCCEDCRTRGQFNAFSY
 HFRGRRSLEFSYQEDKPTKTRPRKIPSVGRQGEHLSNSTSAFSTRSDASGTNDFREFVLEMQKTIIDL R
 TQIKKLESRLSTTECVDAGGESHANNTKWKKDACTICECKDGQVTCFVEACPPATCAVPVNI PGACCPVC
 LQKRAEEKP

TRTRPLEQKLISEEDLAANDILDYKDDDDKV

Chromatograms: https://cdn.origene.com/chromatograms/mk8008_f12.zip

Restriction Sites: SgfI-MluI

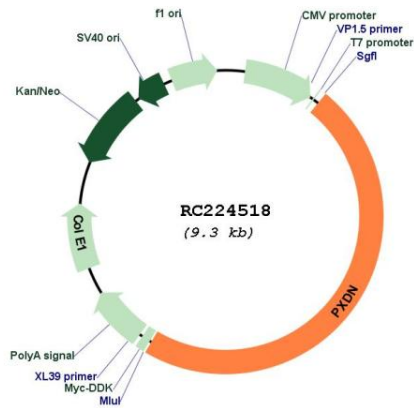
Cloning Scheme:



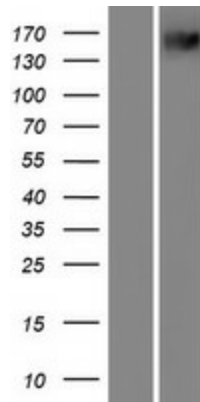
ACCN: NM_012293

ORF Size:	4437 bp
OTI Disclaimer:	The molecular sequence of this clone aligns with the gene accession number as a point of reference only. However, individual transcript sequences of the same gene can differ through naturally occurring variations (e.g. polymorphisms), each with its own valid existence. This clone is substantially in agreement with the reference, but a complete review of all prevailing variants is recommended prior to use. More info
OTI Annotation:	This clone was engineered to express the complete ORF with an expression tag. Expression varies depending on the nature of the gene.
Components:	The ORF clone is ion-exchange column purified and shipped in a 2D barcoded Matrix tube containing 10ug of transfection-ready, dried plasmid DNA (reconstitute with 100 ul of water).
Reconstitution Method:	<ol style="list-style-type: none">1. Centrifuge at 5,000xg for 5min.2. Carefully open the tube and add 100ul of sterile water to dissolve the DNA.3. Close the tube and incubate for 10 minutes at room temperature.4. Briefly vortex the tube and then do a quick spin (less than 5000xg) to concentrate the liquid at the bottom.5. Store the suspended plasmid at -20°C. The DNA is stable for at least one year from date of shipping when stored at -20°C.
RefSeq:	NM_012293.3
RefSeq Size:	6821 bp
RefSeq ORF:	4440 bp
Locus ID:	7837
UniProt ID:	Q92626
Cytogenetics:	2p25.3
Protein Families:	Druggable Genome, Transmembrane
MW:	165.1 kDa
Gene Summary:	This gene encodes a heme-containing peroxidase that is secreted into the extracellular matrix. It is involved in extracellular matrix formation, and may function in the physiological and pathological fibrogenic response in fibrotic kidney. Mutations in this gene cause corneal opacification and other ocular anomalies, and also microphthalmia and anterior segment dysgenesis. [provided by RefSeq, Aug 2014]

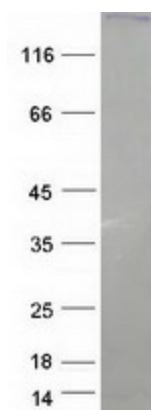
Product images:



Circular map for RC224518



Western blot validation of overexpression lysate (Cat# [LY415856]) using anti-DDK antibody (Cat# [TA50011-100]). Left: Cell lysates from untransfected HEK293T cells; Right: Cell lysates from HEK293T cells transfected with RC224518 using transfection reagent MegaTran 2.0 (Cat# [TT210002]).



Coomassie blue staining of purified PXDN protein (Cat# [TP324518]). The protein was produced from HEK293T cells transfected with PXDN cDNA clone (Cat# RC224518) using MegaTran 2.0 (Cat# [TT210002]).