

## Product datasheet for **RC224516**

### NRG1 (NM\_013959) Human Tagged ORF Clone

#### Product data:

**Product Type:** Expression Plasmids  
**Product Name:** NRG1 (NM\_013959) Human Tagged ORF Clone  
**Tag:** Myc-DDK  
**Symbol:** NRG1  
**Synonyms:** ARIA; GGF; GGF2; HGL; HRG; HRG1; HRGA; MST131; MSTP131; NDF; NRG1-IT2; SMDF  
**Mammalian Cell Selection:** Neomycin  
**Vector:** pCMV6-Entry (PS100001)  
**E. coli Selection:** Kanamycin (25 ug/mL)  
**ORF Nucleotide Sequence:** >RC224516 representing NM\_013959  
**Red=Cloning site Blue=ORF Green=Tags(s)**

TTTTGTAATACGACTCACTATAGGGCGCCGGGAATTCGTCGACTGGATCCGGTACCGAGGAGATCTGCC  
GCC**CGATCGCC**

ATGGAGATTTATCCCCAGACATGTCTGAGGTCGCCGCCGAGAGGTCTCCAGCCCCTCCACTCAGCTGA  
GTGCAGACCCATCTCTTGATGGCTTCCGGCAGCAGAAGACATGCCAGAGCCCAGACTGAAGATGGGAG  
AACCCCTGGACTCGTGGCCTGGCCGTGCCCTGCTGTGCGTGCCTAGAAGCTGAGCGCCTGAGAGGTTGC  
CTCAACTCAGAGAAAATCTGCATTGTCCCCATCCTGGCTTGCCTGGTCAAGCTCTGCCTCTGCATCGCC  
GCCTCAAGTGGGTATTTGTGGACAAGATCTTTGAATATGACTCTCCTACTCACCTTGACCCTGGGGGTT  
AGGCCAGGACCTATTATTTCTTGGACGCAACTGCTGCCTCAGCTGTGTGGGTGTGCTGAGGCATAC  
ACTTCACCTGTCTCTAGGGCTCAATCTGAAAGTGAGGTTCAAGTTACAGTGCAAGGTGACAAGGCTGTTG  
TCTCCTTTGAACCATCAGCGGCACCCGACCCGAAGAATCGTATTTTTGCCTTTTCTTTTGGCCGCCAC  
TGCGCCATCCTTCCCTTCAACCCCGAACCCCTGAGGTGAGAACGCCAAGTCAGCAACTCAGCCACAA  
ACAACAGAACTAATCTCAAATGCTCCTAACTTTCTACATCTACATCCACTGGGACAAGCCATC  
TTGTAAGTGTGCGGAGAAGGAGAAAATTTCTGTGTGAATGGAGGGGAGTGCTTCATGGTAAAGACCT  
TTCAAACCCCTCGAGATACTTGTGCAAGTGCCCAATGAGTTACTGGTGATCGCTGCCAAAACCTACGTA  
ATGGCCAGCTTCTACAGTACGTCCACTCCCTTTCTGTCTCTGCCTGAA

**ACGCGT**ACGCGGCCGCTCGAGCAGAACTCATCTCAGAAGAGGATCTGGCAGCAAATGATATCCTGGATT  
ACAAGGATGACGACGATAAGGTTTAA



[View online »](#)

**Protein Sequence:** >RC224516 representing NM\_013959  
Red=Cloning site Green=Tags(s)

```
MEIYSPDMSEVAAERSSSPSTQLSADPSLDGLPAAEDMPEPQTEDGRTPGLVGLAVPCCACLEAERLRGC
LNSEKICIVPILACLVSLLCLCIAGLKWVFDKIFDYDSPHTLDPGGLGQDPIISLDATAASAVVWSSEAY
TSPVSRQSESEVQVTVQGDKAVVSFEPSSAAPTPKNRIFAFSFLPSTAPSFSPTRNPEVTRPKSATQPQ
TTETNLQTAPKLSTSTTTGTSHLVKCAEKEKTFVNGGECFMVKDLNPSRYLCKCPNEFTGDRCQNYV
MASFYSTSTPFLSLPE
```

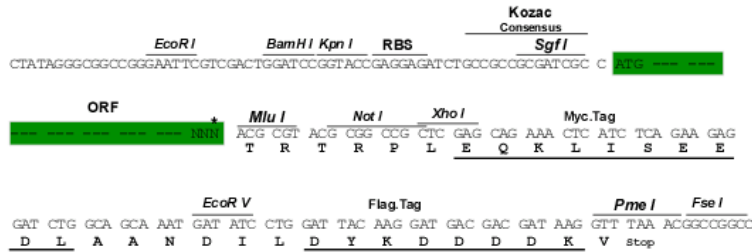
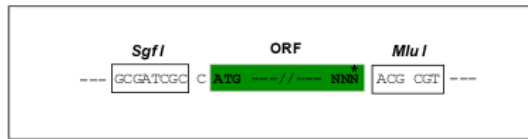
TRTRPLEQKLISEEDLAANDILDYKDDDDKV

**Chromatograms:** [https://cdn.origene.com/chromatograms/mg4379\\_e02.zip](https://cdn.origene.com/chromatograms/mg4379_e02.zip)

**Restriction Sites:** SgfI-MluI

**Cloning Scheme:**

Cloning sites used for ORF Shutting:



\* The last codon before the Stop codon of the ORF

**ACCN:** NM\_013959

**ORF Size:** 888 bp

**OTI Disclaimer:** The molecular sequence of this clone aligns with the gene accession number as a point of reference only. However, individual transcript sequences of the same gene can differ through naturally occurring variations (e.g. polymorphisms), each with its own valid existence. This clone is substantially in agreement with the reference, but a complete review of all prevailing variants is recommended prior to use. [More info](#)

**OTI Annotation:** This clone was engineered to express the complete ORF with an expression tag. Expression varies depending on the nature of the gene.

**Components:** The ORF clone is ion-exchange column purified and shipped in a 2D barcoded Matrix tube containing 10ug of transfection-ready, dried plasmid DNA (reconstitute with 100 ul of water).

**Reconstitution Method:**

1. Centrifuge at 5,000xg for 5min.
2. Carefully open the tube and add 100ul of sterile water to dissolve the DNA.
3. Close the tube and incubate for 10 minutes at room temperature.
4. Briefly vortex the tube and then do a quick spin (less than 5000xg) to concentrate the liquid at the bottom.
5. Store the suspended plasmid at -20°C. The DNA is stable for at least one year from date of shipping when stored at -20°C.

**RefSeq:** [NM\\_013959.3](#)

**RefSeq Size:** 1860 bp

**RefSeq ORF:** 891 bp

**Locus ID:** 3084

**UniProt ID:** [Q02297](#)

**Cytogenetics:** 8p12

**Domains:** EGF, EGF

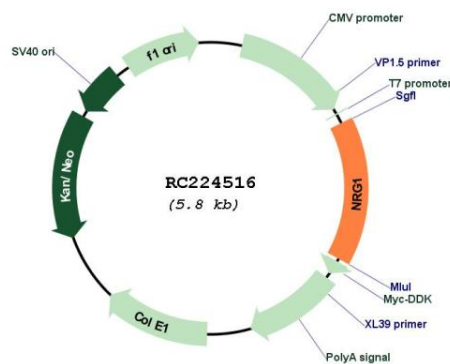
**Protein Families:** Druggable Genome, Secreted Protein, Transcription Factors, Transmembrane

**Protein Pathways:** ErbB signaling pathway

**MW:** 31.5 kDa

**Gene Summary:** The protein encoded by this gene is a membrane glycoprotein that mediates cell-cell signaling and plays a critical role in the growth and development of multiple organ systems. An extraordinary variety of different isoforms are produced from this gene through alternative promoter usage and splicing. These isoforms are expressed in a tissue-specific manner and differ significantly in their structure, and are classified as types I, II, III, IV, V and VI. Dysregulation of this gene has been linked to diseases such as cancer, schizophrenia, and bipolar disorder (BPD). [provided by RefSeq, Apr 2016]

## Product images:



Circular map for RC224516