

Product datasheet for RC224511

OR4C3 (NM_001004702) Human Tagged ORF Clone

Product data:

Product Type: Expression Plasmids
Product Name: OR4C3 (NM_001004702) Human Tagged ORF Clone
Tag: Myc-DDK
Symbol: OR4C3
Synonyms: OR11-98
Mammalian Cell Selection: Neomycin
Vector: pCMV6-Entry (PS100001)
E. coli Selection: Kanamycin (25 ug/mL)
ORF Nucleotide Sequence: >RC224511 representing NM_001004702
 Red=Cloning site Blue=ORF Green=Tags(s)

TTTTGTAATACGACTCACTATAGGGCGGCCGGAATTCGTCGACTGGATCCGGTACCGAGGAGATCTGCC
 GCC**CGATCGCC**

ATGCAATTAGTTCTATTACTTATGTTTCTCCTTGTCTTTATAGGCAATACTGCACCTGCATTCTCAGTGA
 CCTTGGAACTATGGACATACCACAAAATCACAGAATTTTTCATGCTGGGGCTCTCACAGAACTCAGA
 GGTACAGAGAGTTCTCTTTGGTCTTTTGTGATCTATGTGGTCACGGTTTGTGGCAACATGCTCATT
 GTGGTCACTATCACCTCCAGCCCCAGCTGGCTTCCCCTGTGATTTTTTCTGGCCAACCTATCCTTTA
 TTGACACCTTTTATTCTTCTTCTATGGCTCCTAAACTCATTGCTGACTCATTGTATGAGGGGAGAACCAT
 CTCTTATGAGTGCATGGCTCAGCTCTTGGAGCTCATTTTTTGGGAGGTGTTGAGATCATTCTGCTC
 ACAGTGATGGCTTATGACCGCTATGTGGCCATCTGTAAGCCCCTGCACAATACTACCATCATGACCAGGC
 ATCTCTGTGCCATGCTTGTAGGGGTGGCTTGGCTTGGGGCTTCTGCAATCATTGGTTCAGCTCCTCCT
 GGTCTTTGGTTGCCCTTCTGTGGGCCAATGTGATCAATCACTTGCCTGTGACTTGTACCCTTTGCTG
 GAAGTTGCCTGCACCAATACGTATGTCATTGGTCTGCTGGTGGTTGCCAACAGTGGTTAATCTGCCTGT
 TGAACCTCCTCATGCTGGCTGCCTCCTACATTGTATCCTGTACTCCTGAGGTCCCACAGTGCAGATGG
 GAGATGCAAAGCCCTCTCACCTGTGGAGCCCACTTATTGTTGTGCCTTGTCTTTGTGCCCTGTATA
 TTTACTTATGTGCATCCATTTTCTACTTTACCTATAGACAAAAATATGGCATTATTTTATGGTATTCTGA
 CACCTATGTTGAATCCACTCATTATACCTGAGAAATGAAGAGGTAAAAATGCCATGAGAAAGCTCTT
 TACATGG

ACGCGTACGCGGCCGCTCGAGCAGAAACTCATCTCAGAAGAGGATCTGGCAGCAATGATATCCTGGATT
 ACAAGGATGACGACGATAAGGTTTAA



[View online »](#)

Protein Sequence: >RC224511 representing NM_001004702
Red=Cloning site Green=Tags(s)

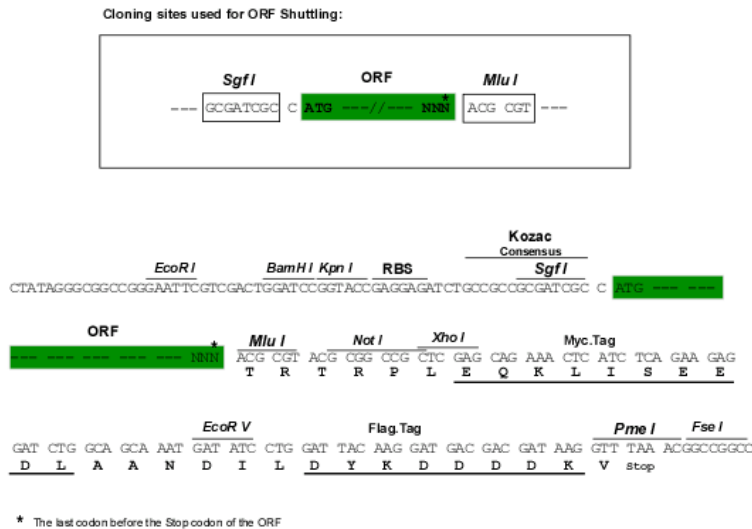
MQLVLLLMFLLVFIGNTAPAFSVTLSEMDIPQNITEFFMLGLSQNSEVQRVLFVVFLLIYVVTVCGNMLI
 VVTITSSPTLASPVYFFLANLSFIDTFYSSMAPKLIADSLYEGRTISYECCMAQLFGAHFLGGVEIILL
 TVMAYDRYVAICKPLHNTTIMTRHLCAMLVGVAWLGGFLHSLVQLLLVLWLPFCGPNVINHFACDLYPLL
 EVACTNTYVIGLLVVANGLICLLNFLMLAASYIVILYSLRSHSADGRCKALSTCGAHFIVVALFFVPCI
 FTYVHPFSTLPIDKNMALFYGILTPMLNPLIYTLRNEEVKNAMRKLFTW

TRTRPLEQKLISEEDLAANDILDYKDDDDKV

Chromatograms: https://cdn.origene.com/chromatograms/mk8002_e06.zip

Restriction Sites: SgfI-MluI

Cloning Scheme:



ACCN: NM_001004702

ORF Size: 987 bp

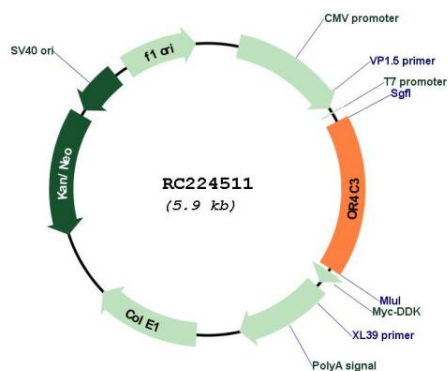
OTI Disclaimer: The molecular sequence of this clone aligns with the gene accession number as a point of reference only. However, individual transcript sequences of the same gene can differ through naturally occurring variations (e.g. polymorphisms), each with its own valid existence. This clone is substantially in agreement with the reference, but a complete review of all prevailing variants is recommended prior to use. [More info](#)

OTI Annotation: This clone was engineered to express the complete ORF with an expression tag. Expression varies depending on the nature of the gene.

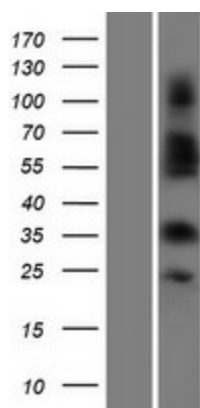
Components: The ORF clone is ion-exchange column purified and shipped in a 2D barcoded Matrix tube containing 10ug of transfection-ready, dried plasmid DNA (reconstitute with 100 ul of water).

Reconstitution Method:	<ol style="list-style-type: none">1. Centrifuge at 5,000xg for 5min.2. Carefully open the tube and add 100ul of sterile water to dissolve the DNA.3. Close the tube and incubate for 10 minutes at room temperature.4. Briefly vortex the tube and then do a quick spin (less than 5000xg) to concentrate the liquid at the bottom.5. Store the suspended plasmid at -20°C. The DNA is stable for at least one year from date of shipping when stored at -20°C.
RefSeq:	<u>NM_001004702.1, NP_001004702.1</u>
RefSeq Size:	990 bp
RefSeq ORF:	909 bp
Locus ID:	256144
UniProt ID:	<u>Q8NH37</u>
Cytogenetics:	11p11.2
Protein Families:	Druggable Genome, Transmembrane
Protein Pathways:	Olfactory transduction
MW:	36.5 kDa
Gene Summary:	Olfactory receptors interact with odorant molecules in the nose, to initiate a neuronal response that triggers the perception of a smell. The olfactory receptor proteins are members of a large family of G-protein-coupled receptors (GPCR) arising from single coding-exon genes. Olfactory receptors share a 7-transmembrane domain structure with many neurotransmitter and hormone receptors and are responsible for the recognition and G protein-mediated transduction of odorant signals. The olfactory receptor gene family is the largest in the genome. The nomenclature assigned to the olfactory receptor genes and proteins for this organism is independent of other organisms. [provided by RefSeq, Jul 2008]

Product images:



Circular map for RC224511



Western blot validation of overexpression lysate (Cat# [LY423890]) using anti-DDK antibody (Cat# [TA50011-100]). Left: Cell lysates from untransfected HEK293T cells; Right: Cell lysates from HEK293T cells transfected with RC224511 using transfection reagent MegaTran 2.0 (Cat# [TT210002]).