

Product datasheet for RC224493

Kallikrein 4 (KLK4) (NM_004917) Human Tagged ORF Clone

Product data:

| | |
|---------------------------|---|
| Product Type: | Expression Plasmids |
| Product Name: | Kallikrein 4 (KLK4) (NM_004917) Human Tagged ORF Clone |
| Tag: | Myc-DDK |
| Symbol: | Kallikrein 4 |
| Synonyms: | AI2A1; ARM1; EMSP; EMSP1; kallikrein; KLK-L1; PRSS17; PSTS |
| Mammalian Cell Selection: | Neomycin |
| Vector: | pCMV6-Entry (PS100001) |
| E. coli Selection: | Kanamycin (25 ug/mL) |
| ORF Nucleotide Sequence: | >RC224493 representing NM_004917 Red=Cloning site Blue=ORF Green=Tags(s) |

TTTGTGAATACGACTCACTATAGGGCGGCCGGAATTCGTCGACTGGATCCGGTACCGAGGAGATCTGCC
 GCCCGCATCGCC

ATGGCCACAGCAGGAAATCCCTGGGGCTGGTTCCTGGGGTACCTCATCCTTGGTGTGCGAGGATCGCTCG
 TCTCTGGTAGCTGCAGCCAAATCATAAACGGCGAGGACTGCAGCCCGCACTCGCAGCCCTGGCAGGCGGC
 ACTGGTCATGAAAACGAATTGTTCTGCTCGGGCGTCTGGTGCATCCGAGTGGGTGCTGTCAGCCGCA
 CACTGTTTCCAGAACTCCTACCATCGGGCTGGGCTGCACAGTCTTGAGGCCACCAAGAGCCAGGGA
 GCCAGATGGTGGAGGCCAGCCTCTCCGTACGGCACCCAGAGTACAACAGACCCTTGCTCGCTAACGACCT
 CATGCTCATCAAGTTGGACGAATCCGTGTCCGAGTCTGACACCATCCGGAGCATCAGCATTGCTTCGAG
 TGCCCTACCGCGGGAACTCTTGCTCGTTTCTGGCTGGGGTCTGCTGGCGAACGGCAGAATGCCTACCG
 TGCTGCAGTGCCTGAACGTGTCCGTGGTGTCTGAGGAGGTCTGCAGTAAGCTCTATGACCCGCTGTACCA
 CCCCAGCATGTTCTGCGCCGGCGGAGGGCAGCACCAGAAGGACTCCTGCAACGGTGACTCTGGGGGGCCC
 CTGATCTGCAACGGGTACTTGAGGGCCTTGCTCTTCGGAAAAGCCCCGTGTGGCCAAGTTGCCGTGC
 CAGGTGTCTACCAACCTCTGCAAATTCAGTGTGATAGAGAAAACCGTCCAGGCCAGT

ACGCGTACGCGGCCGCTCGAGCAGAACTCATCTCAGAAGAGGATCTGGCAGCAAATGATATCTGGATT
 ACAAGGATGACGACGATAAGGTTTAA


[View online »](#)

Protein Sequence: >RC224493 representing NM_004917
 Red=Cloning site Green=Tags(s)

MATAGNPWGWLGYLILGVAGSLVSGSCSQIINGEDCSPHSQPWQAALVMENELFCSGVLVHPQWVLSAA
 HCFQNSYITIGLHLSLEADQEPGSMVEASLSVRHPEYNRPLLANDMLIKLDESVSSEDTIRSISIASQ
 CPTAGNSCLVSGWGLLANGRMPTVLQCVNYSVVSEEVCSKLYDPLYHPSMF CAGGGHDQKDCNGDSGGP
 LICNGYLQGLVSFGKAPCGQVGPVYTNLCKFTWIEKTVQAS

TRTRPLEQKLISEEDLAANDILDYKDDDDKV

Chromatograms: https://cdn.origene.com/chromatograms/ja1521_a07.zip

Restriction Sites: SgfI-MluI

Cloning Scheme:



ACCN: NM_004917

ORF Size: 762 bp

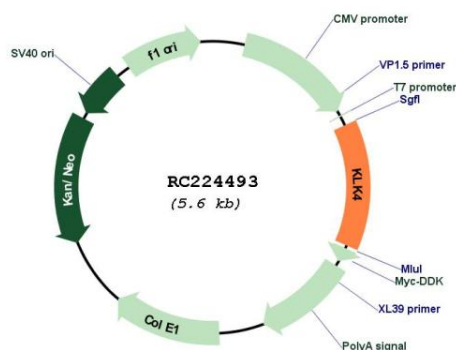
OTI Disclaimer: The molecular sequence of this clone aligns with the gene accession number as a point of reference only. However, individual transcript sequences of the same gene can differ through naturally occurring variations (e.g. polymorphisms), each with its own valid existence. This clone is substantially in agreement with the reference, but a complete review of all prevailing variants is recommended prior to use. [More info](#)

OTI Annotation: This clone was engineered to express the complete ORF with an expression tag. Expression varies depending on the nature of the gene.

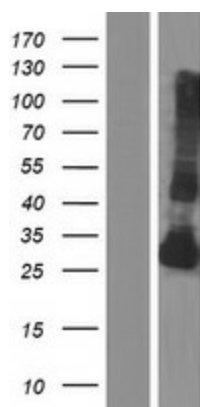
Components: The ORF clone is ion-exchange column purified and shipped in a 2D barcoded Matrix tube containing 10ug of transfection-ready, dried plasmid DNA (reconstitute with 100 ul of water).

| | |
|-------------------------------|--|
| Reconstitution Method: | <ol style="list-style-type: none"> 1. Centrifuge at 5,000xg for 5min. 2. Carefully open the tube and add 100ul of sterile water to dissolve the DNA. 3. Close the tube and incubate for 10 minutes at room temperature. 4. Briefly vortex the tube and then do a quick spin (less than 5000xg) to concentrate the liquid at the bottom. 5. Store the suspended plasmid at -20°C. The DNA is stable for at least one year from date of shipping when stored at -20°C. |
| Note: | Plasmids are not sterile. For experiments where strict sterility is required, filtration with 0.22um filter is required. |
| RefSeq: | <u>NM_004917.3, NP_004908.3</u> |
| RefSeq Size: | 1347 bp |
| RefSeq ORF: | 765 bp |
| Locus ID: | 9622 |
| UniProt ID: | <u>Q9Y5K2</u> |
| Cytogenetics: | 19q13.41 |
| Protein Families: | Druggable Genome, Secreted Protein, Transmembrane |
| MW: | 27.03 kDa |
| Gene Summary: | <p>Kallikreins are a subgroup of serine proteases having diverse physiological functions. Growing evidence suggests that many kallikreins are implicated in carcinogenesis and some have potential as novel cancer and other disease biomarkers. This gene is one of the fifteen kallikrein subfamily members located in a cluster on chromosome 19. In some tissues its expression is hormonally regulated. The expression pattern of a similar mouse protein in murine developing teeth supports a role for the protein in the degradation of enamel proteins. Several transcript variants encoding different proteins have been found for this gene. [provided by RefSeq, Dec 2014]</p> |

Product images:



Circular map for RC224493



Western blot validation of overexpression lysate (Cat# [LY417658]) using anti-DDK antibody (Cat# [TA50011-100]). Left: Cell lysates from untransfected HEK293T cells; Right: Cell lysates from HEK293T cells transfected with RC224493 using transfection reagent MegaTran 2.0 (Cat# [TT210002]).