

## Product datasheet for **RC224492**

### CSEN (KCNIP3) (NM\_001034914) Human Tagged ORF Clone

#### Product data:

Product Type:	Expression Plasmids
Product Name:	CSEN (KCNIP3) (NM_001034914) Human Tagged ORF Clone
Tag:	Myc-DDK
Symbol:	CSEN
Synonyms:	CSEN; DREAM; KCHIP3
Mammalian Cell Selection:	Neomycin
Vector:	pCMV6-Entry (PS100001)
E. coli Selection:	Kanamycin (25 ug/mL)
ORF Nucleotide Sequence:	>RC224492 representing NM_001034914 Red=Cloning site Blue=ORF Green=Tags(s)

TTTTGTAATACGACTCACTATAGGGCGGCCGGAATTCGTCGACTGGATCCGGTACCGAGGAGATCTGCC  
GCC**CGATCGCC**

ATGGGCATCCAGGGCATGGAGCTGTGCGCCATGGCCGTGGTGGTCTGCTGTTTCATCGCCGTCCTCAAGC  
AGTTCGGCATCCTGGAGCCATATCCATGGAAGATAGCAGCGACAGTGAGCTGGAGCTGTCCACGGTGCG  
CCACCAGCCAGAGGGCTGGACCAGCTGCAGGCCAGACCAAGTTCACCAAGAAGGAGCTGCAGTCTCTC  
TACAGGGGCTTTAAGAATGAGTGTCCCACGGGCCTGGTGGACGAAGACACCTTCAAACCTATTTACGCGC  
AGTTCTTCCCTCAGGGAGATGCCACCACCTATGCACACTTCTCTCAACGCCTTTGATGCGGACGGGAA  
CGGGGCCATCCACTTTGAGGACTTTGTGTTGGCCTCTCCATCCTGCTGCGGGGCACAGTCCACGAGAAG  
CTCAAGTGGGCCTTTAATCTCTACGACATTAACAAGGATGGCTACATCACCAAGAGGAGATGCTGGCCA  
TCATGAAGTCCATCTATGACATGATGGCCGCCACACCTACCCCATCCTGCGGGAGGACGCGCCGGCGGA  
GCACGTGGAGAGGTTCTTCGAGAAAATGGACCGGAACCAGGATGGGGTAGTGACCATTGAAGAGTTCCTG  
GAGGCCTGTCAGAAGGATGAGAACATCATGAGCTCCATGCAGCTGTTGAGAATGTCATC

**ACGCGT**ACGCGGGCCGCTCGAGCAGAACTCATCTCAGAAGAGGATCTGGCAGCAAATGATATCCTGGATT  
ACAAGGATGACGACGATAAGGTTTAA



[View online »](#)

**Protein Sequence:** >RC224492 representing NM\_001034914  
 Red=Cloning site Green=Tags(s)

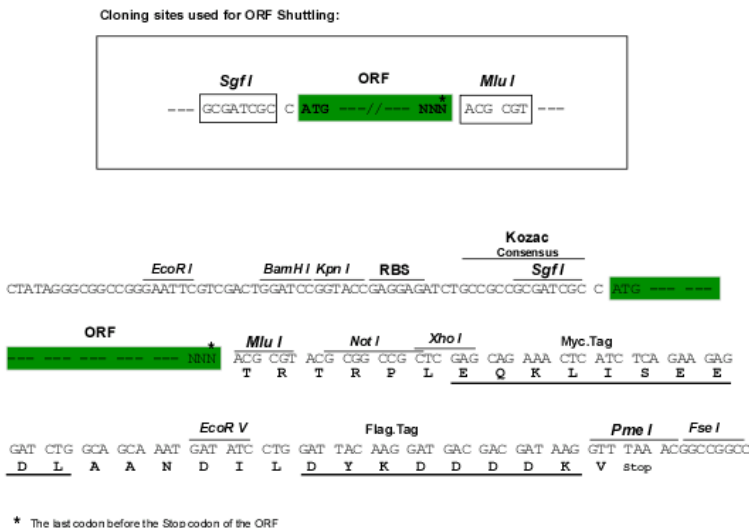
MGIQGMELCAMAVVLLFI AVLKQFGILEPISMEDSSDSELELSTVRHQPEGLDQLQAQTKFTKKEQLSL  
 YRGFKNECPTGLVDEDTFKLIYAQFFPQGDATTYAHFLFNAFDADGNCAIHFEDFVVGLSILLRGTVHEK  
 LKWFNLVDINKDGYITKEEMLAIMKSIYDMMGRHTYPILREDAPA EHVERFFEKMDRNQDGVVTIEEFL  
 EACQKDENIMSSMQLFENVI

TRTRPLEQKLISEEDLAANDILDYKDDDDKV

**Chromatograms:** [https://cdn.origene.com/chromatograms/mk6504\\_d11.zip](https://cdn.origene.com/chromatograms/mk6504_d11.zip)

**Restriction Sites:** SgfI-MluI

**Cloning Scheme:**



**ACCN:** NM\_001034914

**ORF Size:** 690 bp

**OTI Disclaimer:** The molecular sequence of this clone aligns with the gene accession number as a point of reference only. However, individual transcript sequences of the same gene can differ through naturally occurring variations (e.g. polymorphisms), each with its own valid existence. This clone is substantially in agreement with the reference, but a complete review of all prevailing variants is recommended prior to use. [More info](#)

**OTI Annotation:** This clone was engineered to express the complete ORF with an expression tag. Expression varies depending on the nature of the gene.

**Components:** The ORF clone is ion-exchange column purified and shipped in a 2D barcoded Matrix tube containing 10ug of transfection-ready, dried plasmid DNA (reconstitute with 100 ul of water).

This product is to be used for laboratory only. Not for diagnostic or therapeutic use.

©2023 OriGene Technologies, Inc., 9620 Medical Center Drive, Ste 200, Rockville, MD 20850, US

2 / 4

**Reconstitution Method:**

1. Centrifuge at 5,000xg for 5min.
2. Carefully open the tube and add 100ul of sterile water to dissolve the DNA.
3. Close the tube and incubate for 10 minutes at room temperature.
4. Briefly vortex the tube and then do a quick spin (less than 5000xg) to concentrate the liquid at the bottom.
5. Store the suspended plasmid at -20°C. The DNA is stable for at least one year from date of shipping when stored at -20°C.

**RefSeq:** [NM\\_001034914.2](#)

**RefSeq Size:** 2735 bp

**RefSeq ORF:** 693 bp

**Locus ID:** 30818

**UniProt ID:** [Q9Y2W7](#)

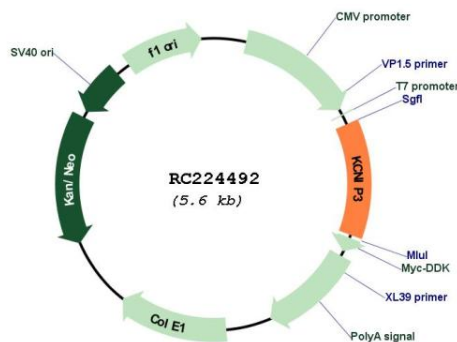
**Cytogenetics:** 2q11.1

**Protein Families:** Druggable Genome, Transcription Factors, Transmembrane

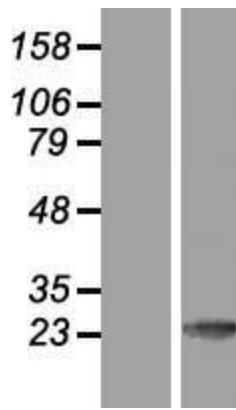
**MW:** 26.2 kDa

**Gene Summary:** This gene encodes a member of the family of voltage-gated potassium (Kv) channel-interacting proteins, which belong to the recoverin branch of the EF-hand superfamily. Members of this family are small calcium binding proteins containing EF-hand-like domains. They are integral subunit components of native Kv4 channel complexes that may regulate A-type currents, and hence neuronal excitability, in response to changes in intracellular calcium. The encoded protein also functions as a calcium-regulated transcriptional repressor, and interacts with presenilins. Alternatively spliced transcript variants encoding different isoforms have been described. [provided by RefSeq, Jul 2008]

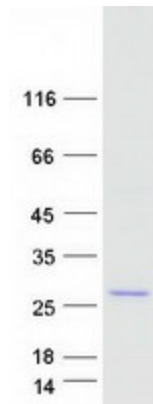
## Product images:



Circular map for RC224492



Western blot validation of overexpression lysate (Cat# [LY422112]) using anti-DDK antibody (Cat# [TA50011-100]). Left: Cell lysates from untransfected HEK293T cells; Right: Cell lysates from HEK293T cells transfected with RC224492 using transfection reagent MegaTran 2.0 (Cat# [TT210002]).



Coomassie blue staining of purified KCNIP3 protein (Cat# [TP324492]). The protein was produced from HEK293T cells transfected with KCNIP3 cDNA clone (Cat# RC224492) using MegaTran 2.0 (Cat# [TT210002]).