

Product datasheet for **RC224483**

DCBLD2 (NM_080927) Human Tagged ORF Clone

Product data:

Product Type:	Expression Plasmids
Product Name:	DCBLD2 (NM_080927) Human Tagged ORF Clone
Tag:	Myc-DDK
Symbol:	DCBLD2
Synonyms:	CLCP1; ESDN
Mammalian Cell Selection:	Neomycin
Vector:	pCMV6-Entry (PS100001)
E. coli Selection:	Kanamycin (25 ug/mL)



[View online »](#)

ORF Nucleotide Sequence:

>RC224483 representing NM_080927
 Red=Cloning site Blue=ORF Green=Tags(s)

TTTTGTAATACGACTCACTATAGGGCGGCCGGGAATTCGTCGACTGGATCCGGTACCGAGGAGATCTGCC
 GCC**CGGATCGCC**

ATGGCGAGCCGGCGGTGGTGAGAGCCAGGCGCTGCCCGCAGTGTCCCAAGTCCGGGCCGGCCGCCG
 CCCCCGCTGGGCGCGCTCCCCCTCTCCGCTCCCTCCCTGCTCCAACCTCCTCCTTCTCCAT
 GCCTCTGTTCTCCTGCTCTTACTTGTCTGCTCCTGCTGCTCGAGGACGCTGGAGCCCAGCAAGGTGAT
 GGATGTGGACACACTGTACTAGGCCCTGAGAGTGAACCCCTTACATCCATAAACTACCCACAGACCTATC
 CCAACAGCACTGTTTGTGAATGGGAGATCCGTGTAAGATGGGAGAGAGATTTCGCATCAAATTTGGTGA
 CTTTGACATTGAAGATTCTGATTCTTGTCACTTAATTACTTGAGAATTTATAATGGAATTGGAGTCAGC
 AGAACTGAAATAGGCAAATACTGTGGTCTGGGTTGCAAATGAACCATTCAATTGAATCAAAGGCAATG
 AAATCACATTGCTGTTTCATGAGTGAATCCATGTTTCTGGACGCGGATTTTTGGCCTCACTCTGTTAT
 AGATAACAAGATCTAATTACTTGTGGACACTGCATCCAATTTTTTGGAACCTGAGTTCAGTAAGTAC
 TGCCAGCTGGTTGTCTGCTTCTTTTGTGAGATATCTGGAACAATTCCTCATGGATATAGAGATTCTT
 CGCCATTGTGCATGGCTGGTGTGCATGCAGGAGTAGTGTCAAACACGTTGGGCGGCCAAATCAGTGTGT
 AATTAGTAAAGGTATTCCTATTATGAAAGTCTTTGGCTAAACAGTCCATCTGTGGTGGGACTTAA
 TCTACAAGTCTTTTTACATTTAAGACAAGTGGATGTTATGGAACACTGGGGATGGAGTCTGGTGTGATCG
 CGGATCCTCAAATAACAGCATCATCTGTGCTGGAGTGGACTGACCACACAGGGCAAGAGAACAGTTGGAA
 ACCCAAAAAGCCAGGCTGAAAAACCTGGACCGCCTTGGGCTGCTTTTGCCACTGATGAATACCAAGTGG
 TTACAAATAGATTTGAATAAGGAAAAGAAAATAACAGGCATTATAACCACTGGATCCACCATGGTGGAGC
 ACAATTAATGTGTCTGCCTACAGAATCCTGTACAGTGTGATGGGAGAAATGGACTGTGACAGAGA
 GCCTGGTGTGGAGCAAGATAAGATATTTCAAGGAAACAAGATTATCACCAGGATGTGCGTAATAACTTT
 TTGCCACCAATTATTGCACGTTTTATTAGAGTGAATCCTACCCAATGGCAGCAGAAAATTGCCATGAAAA
 TGGAGCTGCTCGGATGTCAGTTTATTCTAAAGGTCGCTCCTCAAAACTTACTCAACCTCCACCTCCTCG
 GAACAGCAATGACCTCAAAAACACTACAGCCCCTCAAAAATAGCCAAAGGTCGTGCCCCAAAATTTACG
 CAACCACTACAACCTCGCAGTAGCAATGAATTTCTGCACAGACAGAACAACAACCTGCCAGTCTGATA
 TCAGAAATACTACCGTAACTCAAATGTAACCAAAGATGTAGCGCTGGCTGCAGTCTTGTCCCTGTGCT
 GGTGATGGTCTCACTACTCTCATTCTCATATTAGTGTGTGCTTGGCACTGGAGAACAGAAAGAAAAAA
 ACTGAAGGCACCTATGACTTACCTTACTGGGACCGGGCAGGTTGGTGGAAAGGAATGAAGCAGTTTCTTC
 CTGCAAAAAGCAGTGGACCATGAGGAAACCCAGTTCGCTATAGCAGCAGCGAAGTTAATCACCTGAGTCC
 AAGAGAAGTCACCACAGTGTGTCAGGCTGACTCTGCAGAGTATGCTCAGCCACTGGTAGGAGGAATTGTT
 GGTACACTTATCAAAGATCTACCTTTAAACCAGAAGAAGGAAAAGAAGCAGGCTATGCAGACCTAGATC
 CTTACAACCTACCAGGGCAGGAAGTTTATCATGCCTATGCTGAACCACTCCCAATTACGGGGCCTGAGTA
 TGCAACCCCAATCATCATGGACATGTCAGGGCACCCCACTTCACTTGGTTCAGCCCTCCACATCCACT
 TTCAAGGCTACGGGGAACCAACCTCCCCACTAGTGGAACTTACAATACACTTCTCTCCAGGACTGACA
 GCTGCTCTCAGCCAGGCCAGTATGATACCCGAAAGCTGGGAAGCCAGGCTACCTGCCCCAGACGA
 ATTGGTGTACCAGGTGCCACAGAGCACACAAGAAGTATCAGGAGCAGGAAGGGATGGGGAATGTGATGTT
 TTTAAAGAAATCCTT

ACGCGTACGCGGCCGCTCGAGCAGAACTCATCTCAGAAGAGGATCTGGCAGCAAATGATATCCTGGATT
 ACAAGGATGACGACGATAAGGTTTAA

Protein Sequence: >RC224483 representing NM_080927
Red=Cloning site Green=Tags(s)

MASRAVVRARRCPQCQVRAAAAAPAWAALPLSRSLPPCSNSSFMSPLFLLLLLVLLLLLEDAQAQGD
GCGHTVLGPESGLTTSINYPQTYPNSTVCEWEIRVKMGERVRIKFGDFDIEDSDSCHFNLYRIYNGIGVS
RTEIGKYCGLGLQMNHSIESKGNEITLLFMSGIHVSGRGFLASYSVIDKQDLITCLDTASNFLPEFSKY
CPAGCLLPFAEISGTIPHGYPDSSPLCMAGVHAGVVSNTLGGQISVVISKGIPYYESSLANNVTSVVGHL
STSLFTFKTSGCYGTLGMESGVIADPQITASSVLEWTDHTGQENSWKPKKARLKKPGPPWAAFATDEYQW
LQIDLNKEKKITGIITTGSTMVEHNYYSAYRILYSDDGQKWTVYREPGVEQDKIFQGNKDYHQDVRNMF
LPPIIARFIRVNPTQWQKIAMKMELLGCQFIPKGRPPKLTQPPPPRNSNDLKNTTAPPKIAKGRAPKFT
QPLQPRSSNEFPAQTEQTASPDIRNTTVPNVTKDVALAAVLVPVLMVLTTLILILVCAWHWRNRKKK
TEGTYDLPYWDRAWWKGMKQFLPAKAVDHEETPVRYSSSEVNHLSPREVTTLQADSAEYAQPLVGGIV
GTLHQRSTFKPEEGKEAGYADLPYNSPGQEVYHAYAEPLPITGPEYATPIIMDMSGHPTTSVGPSTST
FKATGNQPPPLVGTYNLTL SRTDSCSSAQAYDTPKAGKPLPAPDEL VYQVPQSTQEVSGAGRDGECDV
FKEIL

TRTRPLEQKLI SEEDLAANDILDYKDDDDKV

Chromatograms: https://cdn.origene.com/chromatograms/mk6164_f01.zip

Restriction Sites: Sgfl-Mlul

Reconstitution Method:

1. Centrifuge at 5,000xg for 5min.
2. Carefully open the tube and add 100ul of sterile water to dissolve the DNA.
3. Close the tube and incubate for 10 minutes at room temperature.
4. Briefly vortex the tube and then do a quick spin (less than 5000xg) to concentrate the liquid at the bottom.
5. Store the suspended plasmid at -20°C. The DNA is stable for at least one year from date of shipping when stored at -20°C.

Note: Plasmids are not sterile. For experiments where strict sterility is required, filtration with 0.22um filter is required.

RefSeq: [NM_080927.1](#)

RefSeq Size: 6093 bp

RefSeq ORF: 2328 bp

Locus ID: 131566

UniProt ID: [Q96PD2](#)

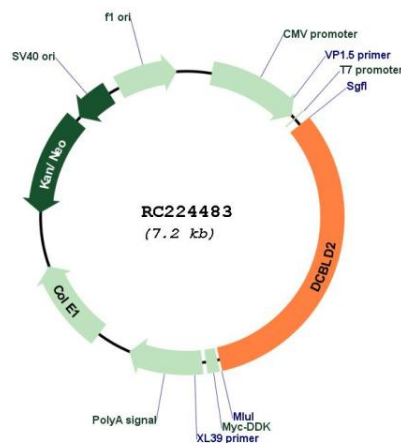
Cytogenetics: 3

Domains: F5_F8_type_C, CUB, LCCL

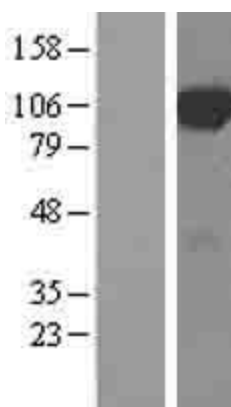
Protein Families: Druggable Genome, Transmembrane

MW: 84.9 kDa

Product images:



Circular map for RC224483



Western blot validation of overexpression lysate (Cat# [LY403322]) using anti-DDK antibody (Cat# [TA50011-100]). Left: Cell lysates from untransfected HEK293T cells; Right: Cell lysates from HEK293T cells transfected with RC224483 using transfection reagent MegaTran 2.0 (Cat# [TT210002]).