

Product datasheet for **RC224482**

Fibulin 1 (FBLN1) (NM_006487) Human Tagged ORF Clone

Product data:

Product Type:	Expression Plasmids
Product Name:	Fibulin 1 (FBLN1) (NM_006487) Human Tagged ORF Clone
Tag:	Myc-DDK
Symbol:	Fibulin 1
Synonyms:	FBLN; FIBL1
Mammalian Cell Selection:	Neomycin
Vector:	pCMV6-Entry (PS100001)
E. coli Selection:	Kanamycin (25 ug/mL)



[View online »](#)

ORF Nucleotide Sequence:

>RC224482 representing NM_006487
 Red=Cloning site Blue=ORF Green=Tags(s)

TTTTGTAATACGACTCACTATAGGGCGGCCGGAATTCGTCGACTGGATCCGGTACCGAGGAGATCTGCC
 GCC**CGGATCGCC**

ATGGAGCGCGCCGCGCCGTCGCGCCGGTCCCGCTTCCGCTGCTGCTGCTCGGCGCCTTGCCTGCTGG
 CGGCCGAGTGGACGCGGATGTCCTCCTGGAGGCTGCTGTGCGGACGGACACCGGATGGCCACTCATCA
 GAAGGACTGCTCGCTGCCATATGCTACGGAATCCAAAGAATGCAGGATGGTGCAGGAGCAGTGTGCCAC
 AGCCAGCTGGAGGAGCTGCACTGTGCCACGGGCATCAGCCTGGCCAACGAGCAGGACCGCTGTGCCACGC
 CCCACGGTGACAACGCCAGCCTGGAGGCCACATTTGTGAAGAGGTGCTGCCATTGCTGTCTGCTGGGGAG
 GGCGGCCAGGCCAGGCCAGAGCTGCGAGTACAGCCTCATGGTTGGCTACCAGTGTGGACAGGTCTTC
 CGGGCATGCTGTGTAAGAGCCAGGAGACCGGAGATTTGGATGTCGGGGGCTCCAAGAAACGGATAAGA
 TCATTGAGTTGAGGAGGAACAAGAGGACCCATATCTGAATGACCCTGCCGAGGAGCGGGCCCTGCAA
 GCAGCAGTCCGAGACACGGGTGACGAGTGGTCTGCTCCTGCTTCGTGGGCTACCAGCTGCTGTCTGAT
 GGTGCTCCTGTGAAGATGTCAATGAATGCATCACGGGCAGCCACAGCTGCCGGCTTGAGAATCCTGCA
 TCAACACAGTGGGCTCTTCCGCTGCCAGCGGGACAGCAGCTGCCGGACTGGCTATGAGCTCACAGAGGA
 CAATAGCTGCAAAGATATTGACGAGTGTGAGAGTGGTATTATAACTGCCTCCCCGATTTTATCTGTGAG
 AATACTCTGGGATCCTTCCGCTGCCGACCAAGCTACAGTGAAGAGTGGCTTTATAAGATGCTCTAG
 GCAACTGTATTGATATCAATGAGTGTGAGTATCAGTGGCCCGTGCCTATCGGGCATAACATGCATCAA
 CACAGAGGGCTCCTACAGTGCAGAGAAGACGTGCCAACTGTGGCCGTGGCTACCATCTCAACGAGGAG
 GGAACGCGCTGTGTTGATGTGGACGAGTCCGCGCCACCTGCTGAGCCCTGTGGAAAGGGACATCGCTGCC
 TGAATCTCCCGCAGTTTCCGCTGCGAATGCAAGACGGGTTACTATTTTACGGCATCAGCAGGATGTG
 TGTGATGTCAACGAGTCCAGCCTACCCCGGGCGCCTGTGTGGCCACAAGTCCGAGAACAACGCTGGGC
 TCTACCTCTGCAGTGTCCGCTGGGCTTCCGGCTCTCTGTGGATGGCAGGTCATGTGAAGACATCAATG
 AGTGCAGCAGCAGCCCTGTAGCCAGGAGTGTGCCAACGTCTACGGCTCTACCAGTGTACTGCCGGCG
 AGGCTACCAGCTCAGCGATGTGGATGGAGTCACTGTGAAGACATCGACGAGTGCGCCCTGCCACCGGG
 GGCCACATCTGCTCCTACCGCTGCATCAACATCCCTGGAAGCTTCCAGTGCAGCTGCCCTCGTCTGGCT
 ACAGGCTGGCCCCAATGGCCGCACTGCCAAGACATTGATGAGTGTGTGACTGGCATCCACAACCTGCTC
 CATCAACGAGACCTGCTCAACATCCAGGGCGGCTTCCGCTGCCTGGCCTTCAGTGCCTGAGAACTAC
 CGCCGCTCCGACGCCACA

ACGGTACGCGGCCGCTCGAGCAGAACTCATCTCAGAAGAGGATCTGGCAGCAAATGATATCCTGGATT
 ACAAGGATGACGACGATAAGGTTTAA

Protein Sequence:

>RC224482 representing NM_006487
 Red=Cloning site Green=Tags(s)

MERAAPSRVPLPLLLLGLALLAAGVDADVLLLEACCADGHRMATHQKDCSLPYATESKECRMVQECCCH
 SQLEELHCATGISLANEQDRCATPHGDNASLEATFVKRCCHCCLLGRAAQAGQSQCEYSLMVGYYCQGVF
 RACCVKSQETGDLVGGGLQETDKIIIEVEEEQEDPYLNDRCRGGGPKQQRDTGDEVVCSFVGYQLLSD
 GVSCEDVNECITGSHSRLGESCINTVGSFRCQRDSSCGTGYELTEDNSCKDIDECESGIHNCLPDFICQ
 NTLGSFRCRPLQCKSGFIQDALGNCIDINECLISAPCPIGHTCINTEGSYTCQKNVPNCGRGYHLNEE
 GTRCVDVDECAPPAEPCGKGHRCVNSPGSFRCECKTGYFDFGISRMCVDVNECQRYPGRLCGHKCENTLG
 SYLCSVGFRLSVDGRSCEDINECSSPSCQECANVYGSYQCYCRRGYQLSDVDGVTCEDIDECALPTG
 GHICSYRCINIPGSFQCSCPSSGYRLAPNGRNCQDIDECVTGIHNCSINETCFNIQGGFRCLAFCEPENY
 RRSAAAT

TRTRPLEQKLISEEDLAANDILDYKDDDDKV

Chromatograms:

https://cdn.origene.com/chromatograms/mk8067_f04.zip

Restriction Sites:

Sgfl-Mlul

Cloning Scheme:


ACCN: NM_006487

ORF Size: 1698 bp

OTI Disclaimer: The molecular sequence of this clone aligns with the gene accession number as a point of reference only. However, individual transcript sequences of the same gene can differ through naturally occurring variations (e.g. polymorphisms), each with its own valid existence. This clone is substantially in agreement with the reference, but a complete review of all prevailing variants is recommended prior to use. [More info](#)

OTI Annotation: This clone was engineered to express the complete ORF with an expression tag. Expression varies depending on the nature of the gene.

Components: The ORF clone is ion-exchange column purified and shipped in a 2D barcoded Matrix tube containing 10ug of transfection-ready, dried plasmid DNA (reconstitute with 100 ul of water).

Reconstitution Method:

1. Centrifuge at 5,000xg for 5min.
2. Carefully open the tube and add 100ul of sterile water to dissolve the DNA.
3. Close the tube and incubate for 10 minutes at room temperature.
4. Briefly vortex the tube and then do a quick spin (less than 5000xg) to concentrate the liquid at the bottom.
5. Store the suspended plasmid at -20°C. The DNA is stable for at least one year from date of shipping when stored at -20°C.

RefSeq: [NM_006487.2](#), [NP_006478.2](#)

RefSeq Size: 2485 bp

RefSeq ORF: 1701 bp

Locus ID: 2192

UniProt ID: [P23142](#)

Cytogenetics: 22q13.31

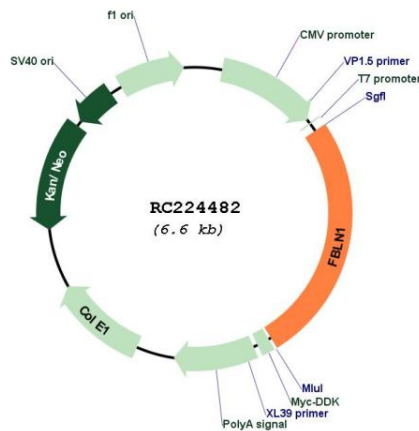
Domains: ANATO, EGF_CA, EGF, EGF

Protein Families: Secreted Protein

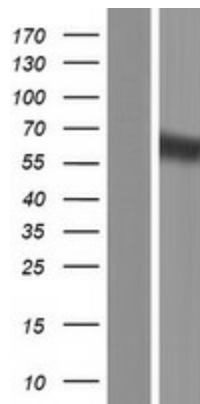
MW: 61.58 kDa

Gene Summary: Fibulin 1 is a secreted glycoprotein that becomes incorporated into a fibrillar extracellular matrix. Calcium-binding is apparently required to mediate its binding to laminin and nidogen. It mediates platelet adhesion via binding fibrinogen. Four splice variants which differ in the 3' end have been identified. Each variant encodes a different isoform, but no functional distinctions have been identified among the four variants. [provided by RefSeq, Jul 2008]

Product images:



Circular map for RC224482



Western blot validation of overexpression lysate (Cat# [LY416607]) using anti-DDK antibody (Cat# [TA50011-100]). Left: Cell lysates from untransfected HEK293T cells; Right: Cell lysates from HEK293T cells transfected with RC224482 using transfection reagent MegaTran 2.0 (Cat# [TT210002]).