

## Product datasheet for **RC224481**

### OGT (NM\_181673) Human Tagged ORF Clone

#### Product data:

Product Type:	Expression Plasmids
Product Name:	OGT (NM_181673) Human Tagged ORF Clone
Tag:	Myc-DDK
Symbol:	OGT
Synonyms:	HINCUT-1; HRNT1; MRX106; O-GLCNAC; OGT1
Mammalian Cell Selection:	Neomycin
Vector:	pCMV6-Entry (PS100001)
E. coli Selection:	Kanamycin (25 ug/mL)
ORF Nucleotide Sequence:	>RC224481 representing NM_181673 Red=Cloning site Blue=ORF Green=Tags(s)

TTTTGTAATACGACTCACTATAGGGCGGCCGGAATTCGTCGACTGGATCCGGTACCGAGGAGATCTGCC  
GCC**CGATCGCC**

ATGGCGTCTTCCGTGGCAACGTGGCCGACAGCACAGGGTTAGCTGAGTTGGCACATCGAGAATATCAGG  
CAGGAGATTTTGAGGCAGCTGAGAGACTGCATGCAGCTCTGGAGACAAGAGCCAGACAATACTGGTGT  
GCTTTTACTTTTCATCTATACACTTCCAGTGTGCAAGGCTGGACAGATCTGCTCACTTTAGCACTCTG  
GCAATTAACAGAACCCCTTCTGGCAGAAGCTTATTCGAATTTGGGGAATGTGTACAAGGAAAGAGGGC  
AGTTGCAGGAGGCAATTGAGCATTATCGACATGCATTGCGTCTCAAACCTGATTTTCATCGATGGTTATAT  
TAACCTGGCAGCCGCTTGGTAGCAGCGGGTACATGGAAGGGGCAAGCTTACGTCCTGCTCTT  
CAGTACAATCCTGATTTGTACTGTGTTCCGAGTGACCTGGGGAACCTGCTCAAAGCCCTGGTTCGCTTGG  
AAGAAGCCAAGGCATGTTATTTGAAAGCAATTGAGACGCAACCGAATTTGCAAGTACGTTGGAGTAACT  
TGGCTGTGTTTTCAATGCACAAGGGGAAATTTGGCTTGAATTCATCACTTTGAAAAGGCTGTCACCCCT  
GACCCAACTTTCTGGATGCTTATCAATTTAGGAAATGTCTTGAAAGAGGCACGCATTTTTGACAGAG  
CTGTGGCAGCTTATCTTCGTGCCCTAAGTTTGTGTTGCAATTCACGAGTGGTGCACGGCAACCTGGCTT  
TGTATACTATGAGCAAGGCCTGATAGATCTGGCAATAGACACCTACAGGGGGCTATCGAACTACAACCA  
CATTTCCCTGATGCTTACTGCAACCTAGCCAATGCTCTCAAAGAGAAGGGCAGTGTGCTGAAGCAGAAG  
ATTGTTATAATACAGCTCTCCGTCTGTGCCACCCATGCAGACTCTCTGAATAACCTAGCCAATATCAA  
ACGAGAACAGGGAAACATTGAAGAGGCAGTTCGCTTGTATCGTAAAGCATTAGAAGTCTTCCCAGAGTTT  
GCTGCTGCCATTCAAATTTAGCAAGTGTACTGCAGCAGCAGGGAAAAGTGCAGGAAGCTCTGATGCATT  
ATAAGGAGGCTATTCGAATCAGTCTACCTTTGCTGATGCCTACTCTAATATGGGAAACTCTAAAGGA  
GATGCAGGATGTTGAGGAGCCTTGCAGTGTATACGCGTGCCATCCAAATTAATCTGCATTTGCAGAT  
GCACATAGCAATCTGGCTTCCATTCATAAGGATTGAGGAATATCCAGAAGCCATAGCTTCTTACC  
CGCTCTGAAACTTAAGCCTGATTTTCTGATGCTTATTGTAACCTGGCTCATTGCCTGCAGATTGCTG  
TGATTGGACAGACTATGATGAGCGAATGAAGAAGTTGGTCAGTATTGTGGCTGACCAGTTAGAGAAGAAT



[View online »](#)

```

AGGTTGCCTTCTGTGCATCCTCATCATAGTATGCTATATCCTCTTTCTCATGGCTTCAGGAAGGCTATTG
CTGAGAGGCACGGCAACCTGTGCTTAGATAAGATTAATGTTCTTCATAAACCCACCATATGAACATCCAAA
AGACTTGAAGCTCAGTGATGGTCGGCTGCGTGTAGGATATGTGAGTTCGACTTTGGGAATCATCTACT
TCTCACCTTATGCAGTCTATTCCAGGCATGCACAACTCTGATAAAATTTGAGGTGTTCTGTTATGCCTGA
GCCAGACGATGGCACAACCTCCGAGTGAAGGTGATGGCAGAAGCCAATCATTTTCATTGATCTTTCTCA
GATTCATGCAATGAAAAAGCAGCTGATCGCATCCATCAGGATGGAATTCATATCCTTGTAAATATGAAT
GGCTACTAAGGGCGCTCGAAATGAGCTTTTTGCTCTCAGGCCAGCTCCTATTCAGGCAATGTGGCTGG
GATACCTGGGACGAGTGGTGGCTTTTTCATGGATTATATTATCACTGATCAGGAACTTCGCCAGCTGA
AGTTGCTGAGCAGTATCCGAGAAATTGGCTTATATGCCCCACACTTTTTTTTATTGGTGATCATGCTAAT
ATGTTCCCTCACCTGAAGAAAAAGCAGTCATCGATTTTAAAGTCCAATGGGCACATTTATGACAATCGGA
TAGTTCTGAATGGCATCGACCTCAAAGCATTTCTTGATAGTCTACCAGATGTGAAAATTGTCAAGATGAA
GTGTCCTGATGGAGGAGACAATGCAGATAGCAGTAACACAGCTCTTAATATGCCTGTTATTCCTATGAAT
ACTATTGCAGAAGCAGTTATTGAAATGATTAACCGAGGACAGATTCAAATAACAATTAATGGATTAGTA
TTAGCAATGGACTGGCAACTACTCAGATCAACAATAAGGCTGCAACTGGAGAGGAGGTTCCCCGTACCAT
TATTGTAACCACCGTTCTCAGTACGGGTACCAGAAGATGCCATCGTATACTGTAACCTTAATCAGTTG
TATAAAATTGACCTTCTACTTTGCAGATGTGGGCAAACATTCTGAAGCGTGTCCCAATAGTGTACTCT
GGCTGTTGCGTTTTCCAGCAGTAGGAGAACCTAATATTCAACAGTATGCACAAAACATGGGCTGCCCA
GAACCGTATCATTTTTTACCTGTTGCTCTAAAGAGGAACACGTGAGGAGGGCCAGCTGGCTGATGTC
TGCTTGGACACTCCACTCTGTAATGGGCACACCACAGGGATGGATGTCCTCTGGGAGGGACCCCATGG
TGACTATGCCAGGAGAGACTCTTGCTTCTCGAGTTGCAGCATCCCAGCTCACTTGCTTAGGTTGCTTGA
GCTTATTGCTAAAAACAGACAAGAATATGAAGACATAGCTGTGAAGCTGGGAAGTATCTAGAATACCTG
AAGAAAGTTCGTGGCAAAGTCTGGAAGCAAAGAATATCTAGCCCTCTGTTCAACACCAAAACAATACAAA
TGGAACTAGAGCGGCTCTATCTACAGATGTGGGAGCATTATGCAGCTGGCAACAAACCTGACCACATGAT
TAAGCTGTTGAAGTCACTGAGTCAGCA
    
```

```

AGCGGACCGACGCGTACGCGGCCGCTCGAGCAGAACTCATCTCAGAAGAGGATCTGGCAGCAAATGATATCC
TGGATTACAAGGATGACGACGATAAGGTTTAA
    
```

**Protein Sequence:**

>RC224481 representing NM\_181673  
 Red=Cloning site Green=Tags(s)

```

MASSVGNVADSTGLAELAHREYQAGDFEAAERHMCQLWRQEPDNTGVLLLLSSIHQCRRLDRSAHFSTL
AIKQNPLLAEAYSNLGNVYKERGQLQEAIEHYRHALRLKPDFIDGYINLAAALVAAGDMEGAVQAYYSAL
QYNPDLYCVRSDLGNLLKALGRLEEAKACYLKAJETQPNFAVAVSNLGCVFNAQGEIWLAIHHFEKAVTL
DPNFLDAYINLGNVLKEARIFDRAVAAYLRALSLSPNHAVVHGNLACVYVEQGLIDLAIDTYRRAIELQP
HFPDAYCNLANALKEKGSVAEAEDCYNTALRLCPTHADSLNLANIKREQNIEEAVRLYRKALEVFPEF
AAHSNLSASVLQQQKQLQEALMHYKEAIRISPTFADAYSNMGNLTKEMQDVQALQCYTRAIQINPAFAD
AHSNLSAIHKDSGNIPEAIASYRTALKLKPDPDAYCNLAHCLQIVCDWTDYDERMCKLVSIVADQLEKN
RLPSVHPHSMYPLSHGFRKAI AERHGNLCLDKINVLHKPPYEHKDLKLSDGRLRVGYVSSDFGNHPT
SHLMQSIIPGMHNPDKFEVFCYALSPDDGNTFRVKVMAEANHFDLSQLPCNGKAADRIHQDGIHILVNMN
GYTKGARNELFALRPAPIQAMWLGYPGTSFALFMDYIITDQETSPAEEVQYSEKLAIMPHTFFIGDHAN
MFPHLKKKAVIDFKSNGHIYDNRIVLNGIDLKAFLDLSDLPVKIVKMKCPDGGDNADSSNTALNMPVIPMN
TIAEAVIEMINRQIQITINGFISNGLATTQINNKAATGEEVPRTIIVTTRSQYGLPEDAIVYCNFNQL
YKIDPSTLQMWANILKRVPNVSLWLLRFPVAVGEPNIQYQAQNMGLPQNRIFSPVAPKEEHVRRGQLADV
CLDTPLCNGHTTGMDVLWAGTPMVTMPGETLASRVAASQLTCLGCELEIAKNRQYEDIYVAVKLGTDLEYL
KKVRGKVVWQRISPLFNTKQYTMELERLYLQWWEHYAAGNKPDHMIKPVETESA
    
```

```

SGPTRRRLEQKLI SEEDLAANDILDYKDDDDKV
    
```

**Chromatograms:**

[https://cdn.origene.com/chromatograms/mk6624\\_g05.zip](https://cdn.origene.com/chromatograms/mk6624_g05.zip)

**Restriction Sites:**

SgfI-RsrII

**Cloning Scheme:**


**ACCN:** NM\_181673

**ORF Size:** 3108 bp

**OTI Disclaimer:** The molecular sequence of this clone aligns with the gene accession number as a point of reference only. However, individual transcript sequences of the same gene can differ through naturally occurring variations (e.g. polymorphisms), each with its own valid existence. This clone is substantially in agreement with the reference, but a complete review of all prevailing variants is recommended prior to use. [More info](#)

**OTI Annotation:** This clone was engineered to express the complete ORF with an expression tag. Expression varies depending on the nature of the gene.

**Components:** The ORF clone is ion-exchange column purified and shipped in a 2D barcoded Matrix tube containing 10ug of transfection-ready, dried plasmid DNA (reconstitute with 100 ul of water).

- Reconstitution Method:**
1. Centrifuge at 5,000xg for 5min.
  2. Carefully open the tube and add 100ul of sterile water to dissolve the DNA.
  3. Close the tube and incubate for 10 minutes at room temperature.
  4. Briefly vortex the tube and then do a quick spin (less than 5000xg) to concentrate the liquid at the bottom.
  5. Store the suspended plasmid at -20°C. The DNA is stable for at least one year from date of shipping when stored at -20°C.

**RefSeq:** [NM\\_181673.3](#)

**RefSeq Size:** 5445 bp

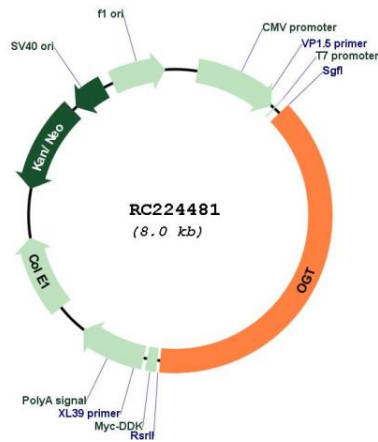
**RefSeq ORF:** 3111 bp

**Locus ID:** 8473

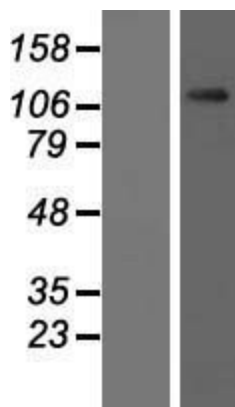
**UniProt ID:** [O15294](#)

<b>Cytogenetics:</b>	Xq13.1
<b>Protein Families:</b>	Druggable Genome
<b>Protein Pathways:</b>	Metabolic pathways, O-Glycan biosynthesis
<b>MW:</b>	115.5 kDa
<b>Gene Summary:</b>	This gene encodes a glycosyltransferase that catalyzes the addition of a single N-acetylglucosamine in O-glycosidic linkage to serine or threonine residues. Since both phosphorylation and glycosylation compete for similar serine or threonine residues, the two processes may compete for sites, or they may alter the substrate specificity of nearby sites by steric or electrostatic effects. The protein contains multiple tetratricopeptide repeats that are required for optimal recognition of substrates. Alternatively spliced transcript variants encoding distinct isoforms have been found for this gene. [provided by RefSeq, Oct 2009]

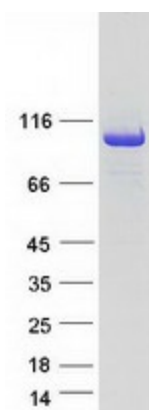
**Product images:**



Circular map for RC224481



Western blot validation of overexpression lysate (Cat# [LY405662]) using anti-DDK antibody (Cat# [TA50011-100]). Left: Cell lysates from untransfected HEK293T cells; Right: Cell lysates from HEK293T cells transfected with RC224481 using transfection reagent MegaTran 2.0 (Cat# [TT210002]).



Coomassie blue staining of purified OGT protein (Cat# [TP324481]). The protein was produced from HEK293T cells transfected with OGT cDNA clone (Cat# RC224481) using MegaTran 2.0 (Cat# [TT210002]).