

Product datasheet for **RC224475**

Neurofilament (NEFM) (NM_005382) Human Tagged ORF Clone

Product data:

Product Type:	Expression Plasmids
Product Name:	Neurofilament (NEFM) (NM_005382) Human Tagged ORF Clone
Tag:	Myc-DDK
Symbol:	Neurofilament
Synonyms:	NEF3; NF-M; NFM
Mammalian Cell Selection:	Neomycin
Vector:	pCMV6-Entry (PS100001)
E. coli Selection:	Kanamycin (25 ug/mL)



[View online »](#)

**ORF Nucleotide
Sequence:**

>RC224475 representing NM_005382
 Red=Cloning site Blue=ORF Green=Tags(s)

TTTTGTAATACGACTCACTATAGGGCGGCCGGGAATTCGTCGACTGGATCCGGTACCGAGGAGATCTGCC
 GCC**CGATCGCC**

ATGAGCTACACGTTGGACTCGCTGGGCAACCCGTCGCCCTACCGCGGGTAACCGAGACCCGCTCGAGCT
 TCAGCCCGCTCAGCGGCTCCCGTCCAGTGGCTTCCGCTCGCAGTCGTGGTCCCAGCGCTCGCCAGCAC
 CGTGTCTCTCTCTATAAGCGCAGCATGCTCGCCCGCGCCTCGCTTACAGCTCGGCCATGCTCAGCTCC
 GCCGAGAGCAGCCTTGACTTCAGCCAGTCTCGTCCCTGCTCAACGGCGGCTCCGGACCCGGCGGCGACT
 ACAAGCTGTCCCCTCAACGAGAAGGAGCAGCTGCAGGGGCTGAACGACCGCTTTGCCGGCTACATAGA
 GAAGGTGCACTACCTGGAGCAGCAGAATAAGGAGATTGAGGGGAGATCCAGGCGCTCGGCAGAAAGCAG
 GCCTCGCAGCCAGCTGGGCGACGCGTACGACCAGGAGATCCGCGAGCTGCGCGCCACCCTGGAGATGG
 TGAACCACGAGAAGGCTCAGGTGCAGCTGGACTCGGACCCTGGAGGAAGACATCCACCGGCTCAAGGA
 GCGCTTTGAGGAGGAGGCGGGTTCGCGCAGCAGACTGAGGCGGCCATCCGCGCGCTGCGCAAAGACATC
 GAGGAGCGCTCGCTGGTCAAGGTGGAGCTGGACAAGAAGGTGCAGTCGCTGCAGGATGAGGTGGCCCTCC
 TGCGGAGCAACCACGAGGAGGAGGTGGCCGACCTTCTGGCCAGATCCAGGCATCGCACATCACGGTGG
 GCGCAAAGACTACCTGAAGACAGACATCTCGACGGCGCTGAAGGAAATCCGCTCCAGCTCGAAAGCCAC
 TCAGACCAGAATATGCACCAGGCCAAGAGTGGTTCAAATGCCGCTACGCCAAGCTCACCAGGCGGCCG
 AGCAGAAACAAGGAGGCCATCCGCTCCGCAAGGAAGAGATCGCCGAGTACCGGCGCCAGCTGCAGTCCAA
 GAGCATCGAGCTAGAGTCGGTGCAGCGCACCAAGGAGTCCCTGGAGCGGAGCTCAGCGACATCGAGGAG
 CGCCAAACCACGACCTCAGCAGCTACCAGGACACCATCCAGCAGCTGGAAAATGAGCTTCGGGGCAGAA
 AGTGGGAAATGGCTCGTCATTTGCGCGAATACCAGGACCTCCTCAACGTCAAGATGGCTCTGGATATAG
 AATCGCTGCGTACAGAAAACCTCTGGAGGGTGAAGAGACTAGATTTAGCACATTTGCAGGAAGCATCACT
 GGGCCACTGTATACACCCGACCCCAATCACAATATCCAGTAAGATTGAGAAAACCAAGGTGGAAGCTC
 CCAAGCTTAAGGTCCAACACAAATTTGTGAGGAGATCATAGAGGAAACCAAAGTGGAGGATGAGAAGTC
 AGAAATGGAAGAGGCCCTGACAGCCATTACAGAGGAATTGGCCGTTTCCATGAAGGAAGAGAAGAAAGAA
 GCAGCAGAAAGAAAGGAAGGAACCCGAAGCTGAAGAAGAAGAGTAGCTGCCAAAAGTCTCCAGTGA
 AAGCAACTGCACCTGAAGTTAAAGAAGAGGAAGGGGAAAAGGAGGAAGAAGGCCAGGAAGAAGAGGA
 GGAAGAAGATGAGGGAGCTAAGTCAGACCAAGCCGAAGAGGGAGGATCCGAGAAGGAAGGCTCTAGTGAA
 AAAGAGGAAGGTGAGCAGGAAGAAGGAGAAACAGAAGCTGAAGCTGAAGGAGAGGAAGCCGAAGCTAAAG
 AGGAAAAGAAAGTGGAGGAAAAGAGTGAGGAAGTGGCTACCAAGGAGGAGCTGGTGGCAGATGCCAAGGT
 GGAAAAGCCAGAAAAGCCAAGTCTCCTGTGCCAAAATCACCAGTGGAAAGAGAAAAGGCAAGTCTCCTGTG
 CCCAAGTCAACAGTGGAAAGAGAAAAGGCAAGTCTCCTGTGCCAAGTCAACAGTGGAAAGAGAAAAGGCAAGT
 CTCTGTGCCAAAATCACCAGTGGAAAGAGAAAAGGCAAGTCTCCTGTGTCAAAAATCACCAGTGGAAAGAGAA
 AGCCAAATCTCCTGTGCCAAAATCACCAGTGGAAAGAGGCAAGTCAAAAGCAGAAGTGGGGAAAGGTGAA
 CAGAAAGAGGAAGAAGAAAAGGAAGTCAAGGAAGCTCCCAAGGAAGAGAAGGTAGAGAAAAGGAAGAGA
 AACCAAGGATGTGCCAGAGAAGAAGAAAGTGAAGTCCCTGTAAAGGAGGAAGCTGTGGCAGAGGTGGT
 CACCATCACCAAATCGGTAAGGTGCACTTGGAGAAAGAGACCAAAAGAGGGGAAGCCACTGCAGCAG
 GAGAAAAGAGAAGGAGAAAAGCGGGAGGAGAGGGAGGAAGTGAAGGAGGAAGGAGTATAAAGGTGCCAAGG
 GATCCAGGAAGGAAGACATAGCTGTCAATGGGGAGGTAGAAGGAAAAGAGGAGGTAGAGCAGGAGACCAA
 GGAAAAGGCAAGTGGGAGGGAAGAGGAGAAAAGGCGTTGTACCAATGGCCTAGACTTGAGCCAGCAGAT
 GAAAAGAAGGGGGTGTAAAAGTGAAGGAGAAAAGTGGTGGTGACCAAAACGGTAGAAAAAATCACCAGTG
 AGGGGGGAGATGGTGCTACCAATACATCACTAAATCTGTAACCGTCACTCAAAAGGTTGAAGAGCATGA
 AGAGACCTTTGAGGAGAACTAGTGTCTACTAAAAGGTAGAAAAAGTCACTTCACACGCCATAGTAAAG
 GAAGTCACCCAGAGTGAC

AG**CGGACCG**ACGCGTACGCGGCCGCTCGAGCAGAACTCATCTCAGAAGAGGATCTGGCAGCAAATGATATCC
 TGGATTACAAGGATGACGACGATAAGGTTTAA

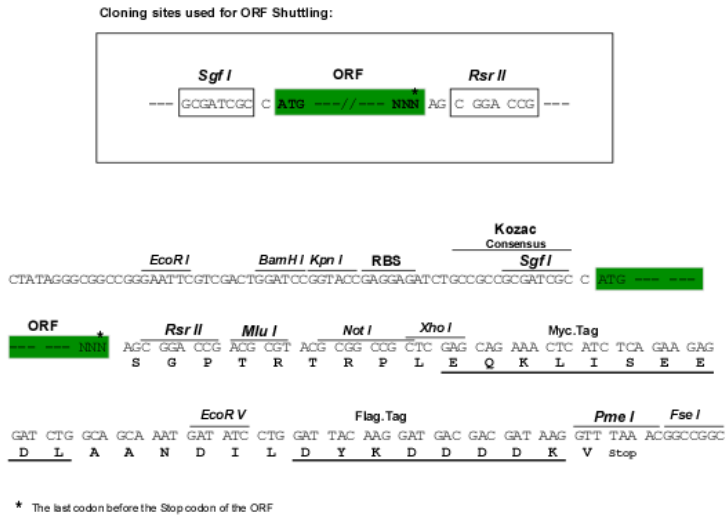
Protein Sequence: >RC224475 representing NM_005382
 Red=Cloning site Green=Tags(s)

MSYTLDSLGNPSAYRRVTETRSSFSRVSGSPSSGFRSQSWSRGSPSTVSSSYKRSMLAPRLAYSSAMLSS
 AESSLDFSQSSSLLNGGSGPGGDYKLSRSNEKEQLQGLNDRFAGYIEKVHYLEQQNKEIEAEIQALRQKQ
 ASHAQLGDAYDQEIRELRATLEMVNHEKAQVQLDSDHLEEDIHRLKERFEEEARLRDDTEAAIRALRKDI
 EEASLVKVELDKKVQSLQDEVAFLRSNHEEEVADLLAQIQASHITVERKDYLKTDISTALKEIRSQLESH
 SDQNMHQAEWFKCRYAKLTEAAEQNKEAIRSAKEEIAEYRRQLQSKSIELESVRGTKESSLERQLSDIEE
 RHNHDLSSYQDTIQQLENELRGTKWEMARHLREYQDLLNVKMLDIEIAAYRKLLLEGEETRFSTFAGSIT
 GPLYTHRPPITISSKIQTKVEAPKLVQHKFVEEIEETKVEDEKSEMEEALTAITEELAVSMKEEKKE
 AAEEEEPEAEVEEVAACKSPVKATAPEVKEEEGEKEEEEGQEEEEEEDEGAKSDQAEEGGSEKESSE
 KEEGEQEEGETEAEEAEAEAAKKEEKVVEEKSEEVATKEELVADAKVEKPEKAKSPVPSVVEEKGKSPV
 PKSPVEEKGKSPVPSVVEEKGKSPVPSVVEEKGKSPVSKSPVEEKAKSPVPSVVEEAKSKAEVKGKE
 QKEEEKEVKEAPKEEKVEKKEEKPKDVPKKAESPVKEEVAEAVVTITKSVKHLEKETKEEGKPLQQ
 EKEKEKAGGEGGSEEGSDKGAKSRKEDIAVNGEVEGKEEVEQETKEKGSGREEEKGVVTNGLDLSPAD
 EKKGGDKSEKVVVTKTVEKITSEGGDGTKYITKSVTVTKVEEHEETFEELVSTKKVEKVTSHAIVK
 EVTQSD

SGPTRRRLEQKLISEEDLAANDILDYKDDDDKV

Restriction Sites: SgfI-RsrII

Cloning Scheme:

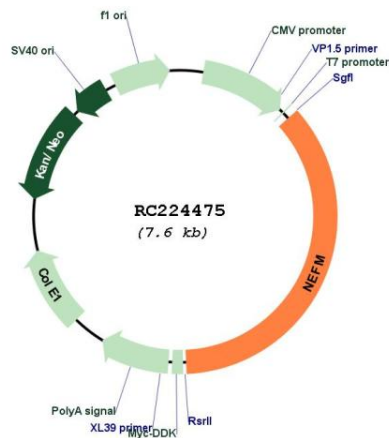


ACCN: NM_005382

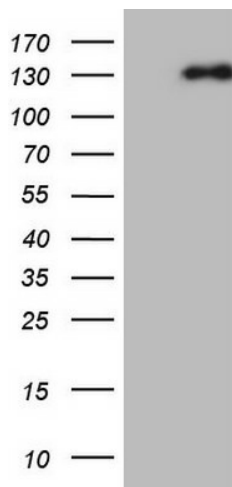
ORF Size: 2748 bp

OTI Disclaimer:	<p>Due to the inherent nature of this plasmid, standard methods to replicate additional amounts of DNA in E. coli are highly likely to result in mutations and/or rearrangements. Therefore, OriGene does not guarantee the capability to replicate this plasmid DNA. Additional amounts of DNA can be purchased from OriGene with batch-specific, full-sequence verification at a reduced cost. Please contact our customer care team at custsupport@origene.com or by calling 301.340.3188 option 3 for pricing and delivery.</p> <p>The molecular sequence of this clone aligns with the gene accession number as a point of reference only. However, individual transcript sequences of the same gene can differ through naturally occurring variations (e.g. polymorphisms), each with its own valid existence. This clone is substantially in agreement with the reference, but a complete review of all prevailing variants is recommended prior to use. More info</p>
OTI Annotation:	This clone was engineered to express the complete ORF with an expression tag. Expression varies depending on the nature of the gene.
Components:	The ORF clone is ion-exchange column purified and shipped in a 2D barcoded Matrix tube containing 10ug of transfection-ready, dried plasmid DNA (reconstitute with 100 ul of water).
Reconstitution Method:	<ol style="list-style-type: none"> 1. Centrifuge at 5,000xg for 5min. 2. Carefully open the tube and add 100ul of sterile water to dissolve the DNA. 3. Close the tube and incubate for 10 minutes at room temperature. 4. Briefly vortex the tube and then do a quick spin (less than 5000xg) to concentrate the liquid at the bottom. 5. Store the suspended plasmid at -20°C. The DNA is stable for at least one year from date of shipping when stored at -20°C.
RefSeq:	NM_005382.2
RefSeq Size:	3238 bp
RefSeq ORF:	2751 bp
Locus ID:	4741
UniProt ID:	P07197
Cytogenetics:	8p21.2
Domains:	filament, filament_head
Protein Pathways:	Amyotrophic lateral sclerosis (ALS)
MW:	102.3 kDa
Gene Summary:	<p>Neurofilaments are type IV intermediate filament heteropolymers composed of light, medium, and heavy chains. Neurofilaments comprise the axoskeleton and functionally maintain neuronal caliber. They may also play a role in intracellular transport to axons and dendrites. This gene encodes the medium neurofilament protein. This protein is commonly used as a biomarker of neuronal damage. Alternative splicing results in multiple transcript variants encoding distinct isoforms. [provided by RefSeq, Oct 2008]</p>

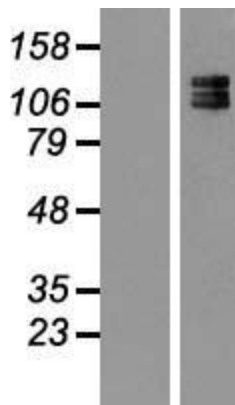
Product images:



Circular map for RC224475



HEK293T cells were transfected with the pCMV6-ENTRY control (Cat# [PS100001], Left lane) or pCMV6-ENTRY NEFM (Cat# RC224475, Right lane) cDNA for 48 hrs and lysed. Equivalent amounts of cell lysates (5 ug per lane) were separated by SDS-PAGE and immunoblotted with anti-NEFM (Cat# [TA805948]). Positive lysates [LY417338] (100ug) and [LC417338] (20ug) can be purchased separately from OriGene.



Western blot validation of overexpression lysate (Cat# [LY417338]) using anti-DDK antibody (Cat# [TA50011-100]). Left: Cell lysates from untransfected HEK293T cells; Right: Cell lysates from HEK293T cells transfected with RC224475 using transfection reagent MegaTran 2.0 (Cat# [TT210002]).