

## Product datasheet for **RC224474**

### ARF1 (NM\_001024226) Human Tagged ORF Clone

#### Product data:

**Product Type:** Expression Plasmids  
**Product Name:** ARF1 (NM\_001024226) Human Tagged ORF Clone  
**Tag:** Myc-DDK  
**Symbol:** ARF1  
**Synonyms:** PVNH8  
**Mammalian Cell Selection:** Neomycin  
**Vector:** pCMV6-Entry (PS100001)  
**E. coli Selection:** Kanamycin (25 ug/mL)  
**ORF Nucleotide Sequence:** >RC224474 ORF sequence  
Red=Cloning site Blue=ORF Green=Tags(s)

TTTTGTAATACGACTCACTATAGGGCGGCCGGAATTCGTCGACTGGATCCGGTACCGAGGAGATCTGCC  
GCC**CGGATCGCC**

ATGGGGAACATCTTCGCCAACCTCTCAAGGGCCTTTTTGGCAAAAAGAAATGCGCATCCTCATGGTGG  
GCCTGGATGCTGCAGGGAAGACCACGATCCTCTACAAGCTTAAGCTGGGTGAGATCGTGACCACATTCC  
CACCATAGGCTTCAACGTGGAACCGTGGAGTACAAGAACATCAGCTTCACTGTGTGGGACGTGGGTGGC  
CAGGACAAGATCCGGCCCTGTGGGCCACTACTCCAGAACACACAAGGCTGATCTTCGTGGTGGACA  
GCAATGACAGAGAGCGTGTGAACGAGGCCCGTGAAGGAGCTCATGAGGATGCTGGCCGAGGACGAGCTCCG  
GGATGCTGTCTCTGGTTCGCCAACAGCAGGACCTCCCAACGCCATGAATGCGGCCGAGATCACA  
GACAAGCTGGGGCTGCACTCACTACGCCACAGGAAGTGGTACATTCAGGCCACCTGCGCCACCAGCGGCC  
ACGGGCTCTATGAAGGACTGGACTGGCTGTCCAATCAGCTCCGGAACCAGAAG

**ACGCGT**ACGCGGCCGCTCGAGCAGAACTCATCTCAGAAGAGGATCTGGCAGCAAATGATATCCTGGATT  
ACAAGGATGACGACGATAAGGTTTAA

**Protein Sequence:** >RC224474 protein sequence  
Red=Cloning site Green=Tags(s)

MGNIFANLFGKLFGKEMRILMVGLDAAGKTTILYKLLKLEIVTTIPTIGFNVETVEYKNISFTVWDVGG  
QDKIRPLWRHYFQNTQGLIFVVDSDNRERVNEAREELMRMLAEDEL RDAVLLVFANKQDLPNAMNAEIT  
DKLGLHSLRHRNWYIQATCATSGDGLYEGLDWSNQLRNQK

**TRTRPLEQKLISEEDLAANDILDYKDDDDKV**

**Chromatograms:** [https://cdn.origene.com/chromatograms/mk6576\\_b12.zip](https://cdn.origene.com/chromatograms/mk6576_b12.zip)



[View online »](#)

Restriction Sites: SgfI-MluI

Cloning Scheme:



ACCN: NM\_001024226

ORF Size: 543 bp

OTI Disclaimer: The molecular sequence of this clone aligns with the gene accession number as a point of reference only. However, individual transcript sequences of the same gene can differ through naturally occurring variations (e.g. polymorphisms), each with its own valid existence. This clone is substantially in agreement with the reference, but a complete review of all prevailing variants is recommended prior to use. [More info](#)

OTI Annotation: This clone was engineered to express the complete ORF with an expression tag. Expression varies depending on the nature of the gene.

Components: The ORF clone is ion-exchange column purified and shipped in a 2D barcoded Matrix tube containing 10ug of transfection-ready, dried plasmid DNA (reconstitute with 100 ul of water).

Reconstitution Method:

1. Centrifuge at 5,000xg for 5min.
2. Carefully open the tube and add 100ul of sterile water to dissolve the DNA.
3. Close the tube and incubate for 10 minutes at room temperature.
4. Briefly vortex the tube and then do a quick spin (less than 5000xg) to concentrate the liquid at the bottom.
5. Store the suspended plasmid at -20°C. The DNA is stable for at least one year from date of shipping when stored at -20°C.

RefSeq: [NM\\_001024226.1](#), [NP\\_001019397.1](#)

RefSeq Size: 1986 bp

RefSeq ORF: 546 bp

Locus ID: 375

UniProt ID: [P84077](#)

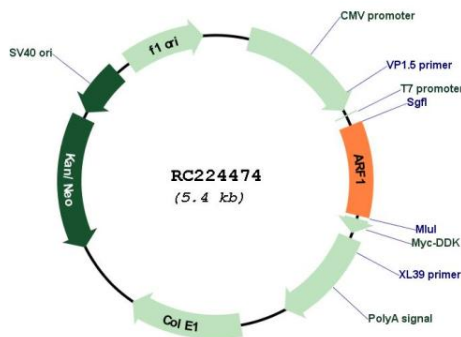
**Cytogenetics:** 1q42.13

**Protein Pathways:** Vibrio cholerae infection

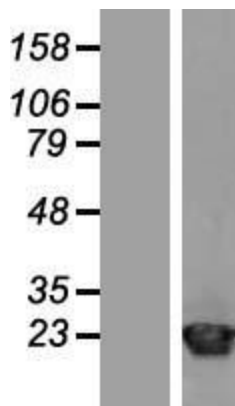
**MW:** 20.7 kDa

**Gene Summary:** ADP-ribosylation factor 1 (ARF1) is a member of the human ARF gene family. The family members encode small guanine nucleotide-binding proteins that stimulate the ADP-ribosyltransferase activity of cholera toxin and play a role in vesicular trafficking as activators of phospholipase D. The gene products, including 6 ARF proteins and 11 ARF-like proteins, constitute a family of the RAS superfamily. The ARF proteins are categorized as class I (ARF1, ARF2 and ARF3), class II (ARF4 and ARF5) and class III (ARF6), and members of each class share a common gene organization. The ARF1 protein is localized to the Golgi apparatus and has a central role in intra-Golgi transport. Multiple alternatively spliced transcript variants encoding the same protein have been found for this gene. [provided by RefSeq, Jul 2008]

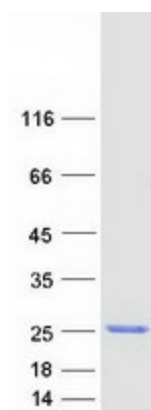
**Product images:**



Circular map for RC224474



Western blot validation of overexpression lysate (Cat# [LY422625]) using anti-DDK antibody (Cat# [TA50011-100]). Left: Cell lysates from untransfected HEK293T cells; Right: Cell lysates from HEK293T cells transfected with RC224474 using transfection reagent MegaTran 2.0 (Cat# [TT210002]).



Coomassie blue staining of purified ARF1 protein (Cat# [TP324474]). The protein was produced from HEK293T cells transfected with ARF1 cDNA clone (Cat# RC224474) using MegaTran 2.0 (Cat# [TT210002]).