

Product datasheet for **RC224454**

LAIR2 (NM_021270) Human Tagged ORF Clone

Product data:

Product Type:	Expression Plasmids
Product Name:	LAIR2 (NM_021270) Human Tagged ORF Clone
Tag:	Myc-DDK
Symbol:	LAIR2
Synonyms:	CD306
Mammalian Cell Selection:	Neomycin
Vector:	pCMV6-Entry (PS100001)
E. coli Selection:	Kanamycin (25 ug/mL)
ORF Nucleotide Sequence:	>RC224454 representing NM_021270 Red=Cloning site Blue=ORF Green=Tags(s)

TTTTGTAATACGACTCACTATAGGGCGCCGGGAATTCGTCGACTGGATCCGGTACCGAGGAGATCTGCC
GCC**CGATCGCC**

ATGTCTCCCCACCCACCGCCCTCCTGGGCTAGTGCTCTGCCTGGCCAGACCATCCACACGCAGGAGG
ATCTGCCAGACCCTCCATCTCGGCTGAGCCAGGCACCGTGATCCCCCTGGGGAGCCATGTGACTTTCGT
GTGCCGGGCCCCGGTTGGGGTTCAAACATTCGCCTGGAGAGGGAGAGTAGATCCACATACAATGATACT
GAAGATGTGTCTCAAGCTAGTCCATCTGAGTCAGAGGCCAGATCCGCATTGACTCAGTAAGTGAAGGAA
ATGCCGGCCTTATCGCTGCATCTATTATAAGCCCCCTAAATGGTCTGAGCAGAGTGACTACCTGGAGCT
GCTGGTAAAAGAAACCTCTGGAGCCCGGACTCCCCGGACACAGAGCCCGGCTCCTCAGCTGGACCCAGC
CAGAGGCCGTCGGACAACAGTCAACAATGAGCATGCACCTGCTTCCCAAGGCCTGAAAGCTGAGCATCTGT
ATATTCTCATCGGGTCTCAGTGGTCTTCTCTTCTGTCTCCTCCTCCTGGTCTTCTGCCTCCATCG
CCAGAATCAGATAAAGCAGGGGCCCCCAGAAGCAAGGACGAGGAGCAGAAGCCACAGCAGAGGCCCTGAC
CTGGCTGTTGATGTTCTAGAGAGGACAGCAGACAAGGCCACAGTCAATGGACTTCTGAGAAGGACAGAG
AGACGGACACCTCGGCCCTGGCTGCAGGGAGTCCCAGGAGGTGACGTATGCTCAGCTGGACCACTGGGC
CCTCACACAGAGGACAGCCCGGGCTGTGTCCCCACAGTCCACAAAGCCCATGGCCGAGTCCATCACGTAT
GCAGCCGTTGCCAGACAC

ACGCGTACGCGGGCCGCTCGAGCAGAAACTCATCTCAGAAGAGGATCTGGCAGCAAATGATATCCTGGATT
ACAAGGATGACGACGATAAGGTTTAA



[View online »](#)

Protein Sequence: >RC224454 representing NM_021270
Red=Cloning site Green=Tags(s)

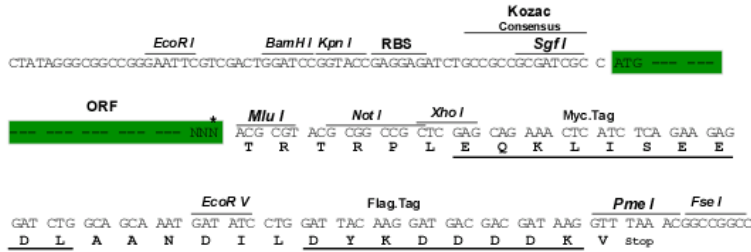
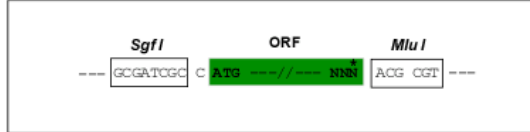
MSPHPTALLGLVLCLAQTIHTQEDLPRPSISAEPGTVIPLGSHVTFVCRGPVGVQTFRLERESRSTYNDT
EDVSYQASPSESEARFRIDSVSEGNAGPYRCIYYKPKWSEQSDYLELLVKETSGGPDSPDTEPGSSAGPT
QRPSDNHNEHAPASQGLKAEHLYLIGVSVVFLFCLLLLVLFLCLRQNIKQGPPRSKDDEEQKPPQRPD
LAVDVLERTADKATVNLPEKDRETDTSALAAGSSQEVTYAQLDHWALTQRTARAVSPQSTKPKMAESITY
AAVARH

TRTRPLEQKLISEEDLAANDILDYKDDDDKV

Restriction Sites: SgfI-MluI

Cloning Scheme:

Cloning sites used for ORF Shuttling:



* The last codon before the Stop codon of the ORF

ACCN: NM_021270

ORF Size: 1073 bp

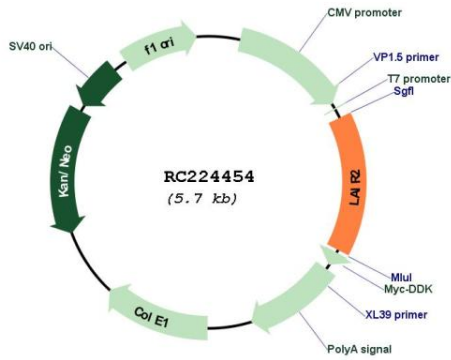
OTI Disclaimer: Due to the inherent nature of this plasmid, standard methods to replicate additional amounts of DNA in E. coli are highly likely to result in mutations and/or rearrangements. Therefore, OriGene does not guarantee the capability to replicate this plasmid DNA. Additional amounts of DNA can be purchased from OriGene with batch-specific, full-sequence verification at a reduced cost. Please contact our customer care team at custsupport@origene.com or by calling 301.340.3188 option 3 for pricing and delivery.

The molecular sequence of this clone aligns with the gene accession number as a point of reference only. However, individual transcript sequences of the same gene can differ through naturally occurring variations (e.g. polymorphisms), each with its own valid existence. This clone is substantially in agreement with the reference, but a complete review of all prevailing variants is recommended prior to use. [More info](#)

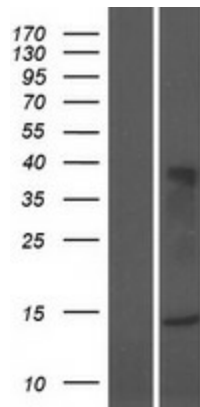
OTI Annotation: This clone was engineered to express the complete ORF with an expression tag. Expression varies depending on the nature of the gene.

Components:	The ORF clone is ion-exchange column purified and shipped in a 2D barcoded Matrix tube containing 10ug of transfection-ready, dried plasmid DNA (reconstitute with 100 ul of water).
Reconstitution Method:	<ol style="list-style-type: none">1. Centrifuge at 5,000xg for 5min.2. Carefully open the tube and add 100ul of sterile water to dissolve the DNA.3. Close the tube and incubate for 10 minutes at room temperature.4. Briefly vortex the tube and then do a quick spin (less than 5000xg) to concentrate the liquid at the bottom.5. Store the suspended plasmid at -20°C. The DNA is stable for at least one year from date of shipping when stored at -20°C.
RefSeq Size:	663 bp
RefSeq ORF:	408 bp
Locus ID:	3904
UniProt ID:	Q6ISS4
Cytogenetics:	19q13.42
Domains:	IG
Protein Families:	Secreted Protein
MW:	14.5 kDa
Gene Summary:	The protein encoded by this gene is a member of the immunoglobulin superfamily. It was identified by its similarity to leukocyte-associated immunoglobulin-like receptor 1, a membrane-bound receptor that modulates innate immune response. The protein encoded by this locus is a soluble receptor that may play roles in both inhibition of collagen-induced platelet aggregation and vessel formation during placental implantation. This gene maps to a region of 19q13.4, termed the leukocyte receptor cluster, which contains 29 genes in the immunoglobulin superfamily. Alternatively spliced transcript variants have been described for this gene. [provided by RefSeq, Sep 2013]

Product images:



Circular map for RC224454



Western blot validation of overexpression lysate (Cat# [LY411982]) using anti-DDK antibody (Cat# [TA50011-100]). Left: Cell lysates from untransfected HEK293T cells; Right: Cell lysates from HEK293T cells transfected with RC224454 using transfection reagent MegaTran 2.0 (Cat# [TT210002]).