

## Product datasheet for **RC224453**

### **POTEA (NM\_001005365) Human Tagged ORF Clone**

#### **Product data:**

Product Type:	Expression Plasmids
Product Name:	POTEA (NM_001005365) Human Tagged ORF Clone
Tag:	Myc-DDK
Symbol:	POTEA
Synonyms:	A26A1; CT104.3; POTE-8; POTE8
Mammalian Cell Selection:	Neomycin
Vector:	pCMV6-Entry (PS100001)
E. coli Selection:	Kanamycin (25 ug/mL)



[View online »](#)

**ORF Nucleotide Sequence:**

>RC224453 representing NM\_001005365  
 Red=Cloning site Blue=ORF Green=Tags(s)

TTTTGTAATACGACTCACTATAGGGCGGCCGGAATTCGTCGACTGGATCCGGTACCGAGGAGATCTGCC  
 GCC**CGGATCGCC**

ATGGTGGCTGAGTTTCTCCAAAGCTGGCTGCCTCCCCTATGAAGAAGCCCTTTGGCTTCAGGGCAAGA  
 TGGGCAAGTGGTCTGCTGCTGCTTCCCCTGCTGCAGGGGAAGCGCAAGAACAACATGGGTGCTTGGAG  
 AGACCACGACGACAGCGCCTTACCGGAGCCAAGGTATCACGTCCGTCGAGAAGATCTGGGCAAGCTCCAC  
 AGAGCTGCCTGGTGGGTGAAGTCCCAGAGCGGATCTCATCGTCATGCTCAGGGGCCCTGGCATTAAACA  
 AAAGGGACAAGAAGAAGAGGACTGCTCTACACTTGGCCTGTGCCAATGGCAATTCAGAAGTAGTAAGTCT  
 TCTGCTGGACAGACAATGTCAACTTCATGTCTTTGACAGCAAAAAGAGGACAGCTCTGATAAAGGCCGTA  
 CAATGCCAGGAGGATGAATGTGCGTTAATGTTGCTACAACATGGCACTGATCCAAATCTCCAGATATGT  
 ATGGGAATACTGCTCTACACTATGCAGTCTACAATGAAGATAAATTAATGGCCAAAACACTGCTTTTATA  
 CGGTGCTGACATTGAATCAAAAACAAGGGTGGCCTCACACCACCTTTGCTTGTGTACATGGACAAAA  
 CAGCGAATGGTGAAATTTTAAATCAAGAAAAAGCTAATTTAAATGCACTTGATAGGTTTGAAGAAGCTG  
 CCCTCATACTTGCTGTACGTTGTGGATCAGCAAGTATAGTTAGTCTTCTACTTCAGCAAAAATATTGATGT  
 ATTTTCTCAAGATGTATTTGGACAAACTGCTGAAGATTATGCAGTTTCTAGTCATCATAGTATAATTTGC  
 CAATTACTTTCTGACTACAAAGAAAACCAGATGCCAAACAACCTCTTCTGGAAATAGCAATCCAGAACAAG  
 ACTTAAAGCTGACATCAGAGGAAGGCCACAAAGGCTTAAAGGAAGTGAAGTGAAGTGAAGTGAAGTGAAGT  
 GACTCAAGAACCAGACATAAATAAGGATTGCGATAGAGAGGTTGAAGAAGAAATGCAGAAGCATGGAAGT  
 AATAATGTGGGATTATCAGAAAACCTGACTGATGGTGTGCTGCTGGCAATGGTGTGGTGGATTAGTTC  
 CAGAAAGAAAGAGCAGAAAGCATGAAAATCAGCAATTTCCATAACACAGAGATTGAAGAGTATCACAGGCC  
 TGAAAAGAAATCTAATGAAAAGAACAAGGTCAAAAGCCAAATACATTTCAGTGGATAACCTTGATGACATA  
 ACATGGCCATCAGAAATAGCGTCAAGGATTATGATTTGCTTTTCTAATTATGAGACTTTTACATTGC  
 TCATTGAACAACCTCAAAATGGATTTTAAACGATTCTGCTAGCCTATCAAAAATCCAGGATGCAGTTATTTT  
 AGAAGAACAACCTACTAGAACTCAAAAATAGCCACTATGAGCAACTTACAGTAGAAGTTGAACAAATGGAA  
 AATATGGTTCATGTACTACAAAA

**ACGCGT**ACGCGGCCGCTCGAGCAGAAACTCATCTCAGAAGAGGATCTGGCAGCAATGATATCCTGGATT  
 ACAAGGATGACGACGATAAGGTTTAA

**Protein Sequence:**

>RC224453 representing NM\_001005365  
 Red=Cloning site Green=Tags(s)

MVAEVSPKLAASPMKKPFGRGKMGKWCCCFPCCRGSGKNNMGAWRDHDDSAFTEPRYHVRREDLGLH  
 RAAWWGEVPRADLIVMLRPGINKRDKKRTALHLACANGNSEVVSLLLDRCQLHVFDSKKRTALIKAV  
 QCQEDECALMLLQHGTDPNLPDYGNTALHYAVYNEDKLMKTLTLLYGADIESKNKGGLTPLLLAVHGQK  
 QRMVKFLIKKANLNALDRFGRTALILAVRCGSASIVSLLLQQNIDVFSQDVFGQTAEDYAVSSHHSIIC  
 QLLSDYKENQMPNNSGNSNPEQDLKLTSEEEPQRLKGSSENSQHEKVTQEPDINKDCDREVEEMQKHGS  
 NNVGLSENLDGAAAGNGDGLVPQRKSRKHENQFPNTEIEEYHRPEKKSNEKNKVKSQIHSVDNLDDI  
 TWPSEIASDYDLLFSNYETFTLLIEQLKMFNDSASLSKIQDAVISEEHLELKNSHYEQLTVEVEQME  
 NMVHVLQK

**TRTRPLEQKLI**SEEDLAANDILDYKDDDDKV

**Chromatograms:**

[https://cdn.origene.com/chromatograms/mk8044\\_e09.zip](https://cdn.origene.com/chromatograms/mk8044_e09.zip)

**Restriction Sites:**

Sgfl-Mlul

Cloning Scheme:



ACCN: NM\_001005365

ORF Size: 1494 bp

OTI Disclaimer: The molecular sequence of this clone aligns with the gene accession number as a point of reference only. However, individual transcript sequences of the same gene can differ through naturally occurring variations (e.g. polymorphisms), each with its own valid existence. This clone is substantially in agreement with the reference, but a complete review of all prevailing variants is recommended prior to use. [More info](#)

OTI Annotation: This clone was engineered to express the complete ORF with an expression tag. Expression varies depending on the nature of the gene.

Components: The ORF clone is ion-exchange column purified and shipped in a 2D barcoded Matrix tube containing 10ug of transfection-ready, dried plasmid DNA (reconstitute with 100 ul of water).

- Reconstitution Method:
1. Centrifuge at 5,000xg for 5min.
  2. Carefully open the tube and add 100ul of sterile water to dissolve the DNA.
  3. Close the tube and incubate for 10 minutes at room temperature.
  4. Briefly vortex the tube and then do a quick spin (less than 5000xg) to concentrate the liquid at the bottom.
  5. Store the suspended plasmid at -20°C. The DNA is stable for at least one year from date of shipping when stored at -20°C.

RefSeq: [NM\\_001005365.2](#), [NP\\_001005365.2](#)

RefSeq Size: 1976 bp

RefSeq ORF: 1497 bp

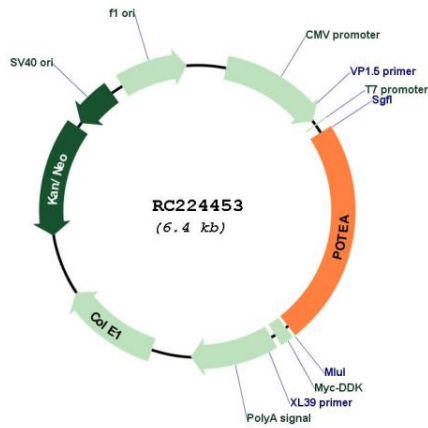
Locus ID: 340441

UniProt ID: [Q6S8J7](#)

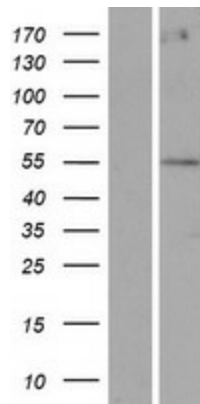
Cytogenetics: 8p11.1

MW: 56 kDa

**Product images:**



Circular map for RC224453



Western blot validation of overexpression lysate (Cat# [LY423700]) using anti-DDK antibody (Cat# [TA50011-100]). Left: Cell lysates from untransfected HEK293T cells; Right: Cell lysates from HEK293T cells transfected with RC224453 using transfection reagent MegaTran 2.0 (Cat# [TT210002]).