

Product datasheet for **RC224449**

STK32C (NM_173575) Human Tagged ORF Clone

Product data:

Product Type:	Expression Plasmids
Product Name:	STK32C (NM_173575) Human Tagged ORF Clone
Tag:	Myc-DDK
Symbol:	STK32C
Synonyms:	PKE; YANK3
Mammalian Cell Selection:	Neomycin
Vector:	pCMV6-Entry (PS100001)
E. coli Selection:	Kanamycin (25 ug/mL)



[View online »](#)

ORF Nucleotide Sequence:

>RC224449 representing NM_173575
 Red=Cloning site Blue=ORF Green=Tags(s)

TTTTGTAATACGACTCACTATAGGGCGGCCGGGAATTCGTCGACTGGATCCGGTACCGAGGAGATCTGCC
 GCC**GCGATCGCC**

ATGAGGAGTGGCGCCGAGCGCAGGGGCAGCAGCGCCGCGCGTCCCCGGGCTCGCCGCCCCCGGCCGCG
 CGCGCCCCGCGCGCTCCGACGCGCCCTCGGCCCTGCCCGCGCCGCTGCTGGCCAGCCCCGGGCCGGGA
 CTCGGGGGATGTCGCTCGCAGCCGCGCCCTGTTTCAGTGGAGCAAGTGAAGAAGAGGATGGCTCG
 TCCATGTCGGCGGCCACCGCGGGAGGCCGGTGTGTTGACGACAAGGAGGACGTGAACTTCGACCACTTCC
 AGATCCTTCGGGCCATTGGGAAGGGCAGCTTTGGCAAGGTGTGCATTGTGCAGAAGCGGGACACGGAGAA
 GATGTACGCCATGAAGTACATGAACAAGCAGCAGTGCATCGAGCGCAGCAGGTCGCAACGTCTCCGG
 GAGCTGGAGATCCTGCAGGAGATCGAGCACGTCTTCTGGTGAACCTCTGGTACTCTCCAGGACGAGG
 AGGACATGTTTCATGGTCGTGGACCTGCTACTGGGCGGGACCTGCGCTACCACCTGCAGCAGAACGTGCA
 GTTCTCCGAGGACACGGTGGGCTGTACATCTGCGAGATGGCAGTGGCTCTGGACTACCTGCGCGCCAG
 CACATCATCCACAGAGATGTCAAGCCTGACAACATTCTCCTGGATGAGAGAGGACATGCACACCTGACCG
 ACTTCAACATTGCCACCATCATCAAGGACGGGGAGCGGGCAGCGCATTAGCAGGCACCAAGCCGTACAT
 GGCTCCGGAGATCTTCCACTCTTTGTCAACGGCGGGACCGGCTACTCCTTCGAGGTGGACTGGTGGTCG
 GTGGGGGTGATGGCCTATGAGCTGCTGCGAGGATGGAGGCCCTATGACATCCACTCCAGCAACCGCGTGG
 AGTCCCTGGTGCAGCTGTTACGACCCGTGAGCGTCCAGTATGTCCCACGTGGTCCAAGGAGATGGTGGC
 CTTGCTGCGGAAGCTCCTCACTGTGAACCCGAGCACCAGGCTCTCCAGCCTCCAGGACGTGCAGGACGCC
 CCGGCGCTGGCCGGCGTGTGTGGGACCACCTGAGCGAGAAGAGGGTGGAGCCGGGCTTCGTGCCAACA
 AAGGCCGTCTGCACTGCGACCCACCTTTGAGCTGGAGGAGATGATCCTGGAGTCCAGGCCCTGCACAA
 GAAGAAGAAGCGCCTGGCCAAGAACAAGTCCCGGACAACAGCAGGAGACAGCTCCAGTCCGAGAATGAC
 TATCTTCAAGACTGCCTCGATGCCATCCAGCAAGACTTCGTGATTTTTAACAGAGAAAAGCTGAAGAGGA
 GCCAGGACCTCCCGAGGGAGCCTCTCCCGCCCCCTGAGTCCAGGGATGCTGCGGAGCCTGTGGAGGACGA
 GGCGGAACGCTCCGCCCTGCCATGTGCGGCCCATTTGCCCTCGGCCGGGAGCGGC

ACGCGTACGCGGCCGCTCGAGCAGAACTCATCTCAGAAGAGGATCTGGCAGCAATGATATCCTGGATT
 ACAAGGATGACGACGATAAGGTTTAA

Protein Sequence:

>RC224449 representing NM_173575
 Red=Cloning site Green=Tags(s)

MRS GAERRGSSAAASPGSPPPGRARPAGSDAPSALPPPAAGQPRARDSGDVRSQPRPLFQWSKWKRMGS
 SMSAATARRPVFDDKEDVNFDFHQILRAIGKGSFGKVCIVQKRDTEKMYAMKYMNKQCCIERDEVRNVFR
 ELEILQEIEHVFLVNLWYSFQDEEDMFVVDLLGGDLRYHLQQNVQFSEDTVRLYICEMALALDYLRGQ
 HI IHRDVKPDNILLDERGHAHLTDFNIATIIKDGERATALAGTKPYMAPEIFHSFVNGGTGYSFEVDWWS
 VGMAYELLRGWRPYDIHSSNAVESLVQLFSTVSVQYVPTWSKEMVALLRKLTVNPEHRLSSLQDVQAA
 PALAGVLWDHLSEKRVPEPGFVFNKGRHLCDPTFELEEMILESRLHKKKRLAKNKS RDNSRDSSEND
 YLQDCLDAIQQDFVIFNREKLKRSQDLPRELPAPESRDAAEPEVEDEAERSALPMCGPICPSAGSG

TRTRPLEQKLI SEEDLAANDILDYKDDDDKV

Chromatograms:

https://cdn.origene.com/chromatograms/mg4086_b05.zip

Restriction Sites:

Sgfl-Mlul

Cloning Scheme:

Cloning sites used for ORF Shutting:



* The last codon before the Stop codon of the ORF

ACCN: NM_173575

ORF Size: 1458 bp

OTI Disclaimer: The molecular sequence of this clone aligns with the gene accession number as a point of reference only. However, individual transcript sequences of the same gene can differ through naturally occurring variations (e.g. polymorphisms), each with its own valid existence. This clone is substantially in agreement with the reference, but a complete review of all prevailing variants is recommended prior to use. [More info](#)

OTI Annotation: This clone was engineered to express the complete ORF with an expression tag. Expression varies depending on the nature of the gene.

Components: The ORF clone is ion-exchange column purified and shipped in a 2D barcoded Matrix tube containing 10ug of transfection-ready, dried plasmid DNA (reconstitute with 100 ul of water).

Reconstitution Method:

1. Centrifuge at 5,000xg for 5min.
2. Carefully open the tube and add 100ul of sterile water to dissolve the DNA.
3. Close the tube and incubate for 10 minutes at room temperature.
4. Briefly vortex the tube and then do a quick spin (less than 5000xg) to concentrate the liquid at the bottom.
5. Store the suspended plasmid at -20°C. The DNA is stable for at least one year from date of shipping when stored at -20°C.

RefSeq: [NM_173575.4](#)
RefSeq Size: 2141 bp

RefSeq ORF: 1461 bp

Locus ID: 282974

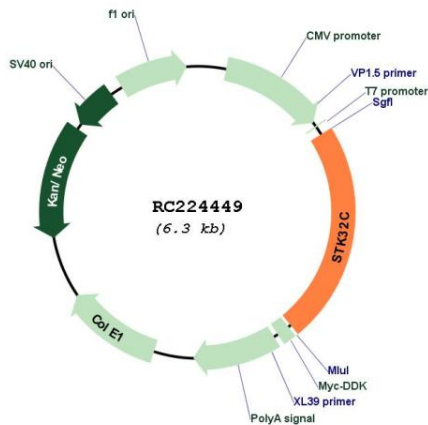
UniProt ID: [Q86UX6](#)
Cytogenetics: 10q26.3

Protein Families: Druggable Genome, Protein Kinase

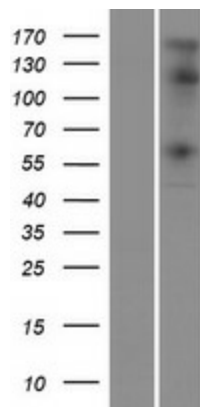
MW: 54.8 kDa

Gene Summary: The protein encoded by this gene is a member of the serine/threonine protein kinase family. It is thought that this family member is functional in brain due to its high expression levels there. DNA methylation differences have been found in this gene in monozygotic twins that are discordant for adolescent depression. Alternative splicing results in multiple transcript variants. [provided by RefSeq, Jan 2016]

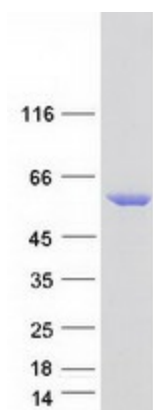
Product images:



Circular map for RC224449



Western blot validation of overexpression lysate (Cat# [LY406486]) using anti-DDK antibody (Cat# [TA50011-100]). Left: Cell lysates from untransfected HEK293T cells; Right: Cell lysates from HEK293T cells transfected with RC224449 using transfection reagent MegaTran 2.0 (Cat# [TT210002]).



Coomassie blue staining of purified STK32C protein (Cat# [TP324449]). The protein was produced from HEK293T cells transfected with STK32C cDNA clone (Cat# RC224449) using MegaTran 2.0 (Cat# [TT210002]).