

Product datasheet for **RC224447**

CD64 (FCGR1B) (NM_001017986) Human Tagged ORF Clone

Product data:

Product Type:	Expression Plasmids
Product Name:	CD64 (FCGR1B) (NM_001017986) Human Tagged ORF Clone
Tag:	Myc-DDK
Symbol:	CD64
Synonyms:	CD64b; FCG1; Fcgamma1a; FCGR1; FCGR1A; FcRI; IGFR1; IGFRB
Mammalian Cell Selection:	Neomycin
Vector:	pCMV6-Entry (PS100001)
E. coli Selection:	Kanamycin (25 ug/mL)
ORF Nucleotide Sequence:	>RC224447 representing NM_001017986 Red=Cloning site Blue=ORF Green=Tags(s)

TTTTGTAATACGACTCACTATAGGGCGCCGGGAATTCGTCGACTGGATCCGGTACCGAGGAGATCTGCC
GCC**CGATCGCC**

ATGTGGTTCTTGACAACCTCTGCTCCTTTGGGTTCCAGTTGATGGGCAAGTGGACACCACAAAGGCAGTGA
TCACTTTGCAGCCTCCATGGGTCAGCGTGTCCAAGAGGAAACCGTAACCTTGCCTGTGAGGTGCTCCA
TCTGCCTGGGAGCAGCTCCACACAGTGGTTTCTCAATGGCACAGCCACTCAGACCTCGACCCCACTAC
AGAATCACCTCTGCCAGTGTCAATGACAGTGGTGAATACAGGTGCCAGAGAGGTCTCTCAGGGCGAAGTG
ACCCCATACAGCTGGAATCCACAGAGGCTGGCTACTACTGCAGGTCTCCAGCAGAGTCTTCATGGAAGG
AGAACCTCTGGCCTTGGAGGTGCATGCGTGAAGGATAAGCTGGTGTACAATGTGCTTTACTATCGAAAT
GGCAAAGCCTTTAAGTTTTTCCACTGGAATTCTAACCTCACCTTCTGAAAACCAACATAAGTCACAATG
GCACCTACCATTGCTCAGGCATGGGAAAGCATCGCTACACATCAGCAGGAATATCACAATACACTGTGAA
AGGCTCCAGTTACCAACTCCTGTCTGGTTTCATGTCCTTTTCTATCTGGCAGTGGGAATAATGTTTTTA
GTGAACACTGTTCTCTGGGTGACAATACGTAAGAAGTAAAAGAAAGAAAAGTGGAAATTTAGAAATCT
CTTTGGATTCTGGTCATGAGAAGAAGTAATTTCCAGCCTTCAAGAAGACAGACATTTAGAAGAAGAGCT
GAAATGTCAGGAACAAAAAGAAGAACAGCTGCAGGAAGGGGTGCACCGGAAGGAGCCCAAGGGGCCACG

ACGCGTACGCGGCCGCTCGAGCAGAAACTCATCTCAGAAGAGGATCTGGCAGCAAATGATATCCTGGATT
ACAAGGATGACGACGATAAGGTTTAA



[View online »](#)

Protein Sequence: >RC224447 representing NM_001017986
Red=Cloning site Green=Tags(s)

MWFLTLLLLWVPVDGQVDTTKAVITLQPPWVSVFQEETVTLHCEVLHLPSSSTQWFLNGTATQTSTPSY
 RITSASVNDSGEYRCQRGLSGRSDPIQLEIHRGWLLLQVSSRVFMEGEPLALRCHAWKDKLVYNVLYRN
 GKAFKFFHWNSNLTILKTNISHNGTYHCSGMGKHRYTSAGISQYTVKGLQLPTPVWFHVLFLAVGIMFL
 VNTVLWVTIRKELKRKKKWNLEISLDSGHEKKVIVSSQLQEDRHLEELKCQEQKEEQLEQEGVHRKEPQGAT

TRTRPLEQKLISEEDLAANDILDYKDDDDKV

Chromatograms: https://cdn.origene.com/chromatograms/mk8004_f11.zip

Restriction Sites: SgfI-MluI

Cloning Scheme:

Cloning sites used for ORF Shuttling:



* The last codon before the Stop codon of the ORF

ACCN: NM_001017986

ORF Size: 840 bp

OTI Disclaimer: The molecular sequence of this clone aligns with the gene accession number as a point of reference only. However, individual transcript sequences of the same gene can differ through naturally occurring variations (e.g. polymorphisms), each with its own valid existence. This clone is substantially in agreement with the reference, but a complete review of all prevailing variants is recommended prior to use. [More info](#)

OTI Annotation: This clone was engineered to express the complete ORF with an expression tag. Expression varies depending on the nature of the gene.

Components: The ORF clone is ion-exchange column purified and shipped in a 2D barcoded Matrix tube containing 10ug of transfection-ready, dried plasmid DNA (reconstitute with 100 ul of water).

Reconstitution Method:

1. Centrifuge at 5,000xg for 5min.
2. Carefully open the tube and add 100ul of sterile water to dissolve the DNA.
3. Close the tube and incubate for 10 minutes at room temperature.
4. Briefly vortex the tube and then do a quick spin (less than 5000xg) to concentrate the liquid at the bottom.
5. Store the suspended plasmid at -20°C. The DNA is stable for at least one year from date of shipping when stored at -20°C.

RefSeq: [NM_001017986.3](#)

RefSeq Size: 846 bp

RefSeq ORF: 843 bp

Locus ID: 2210

UniProt ID: [Q92637](#)

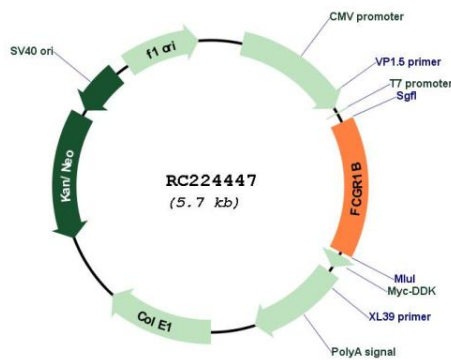
Cytogenetics: 1p11.2

Protein Families: Transmembrane

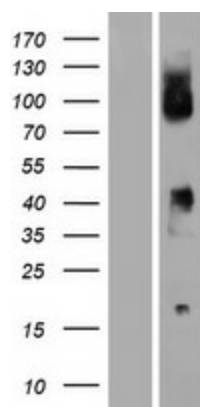
MW: 32.1 kDa

Gene Summary: Three distinct, but closely related classes of receptors that bind the Fc portion of IgG have been identified (FcγRI, II and III). The FcγRI family consists of three closely related genes termed A, B, and C. This gene likely encodes a non-functional protein that is not detectable at the cell surface and binds ligand with low affinity. [provided by RefSeq, Nov 2019]

Product images:



Circular map for RC224447



Western blot validation of overexpression lysate (Cat# [LY422226]) using anti-DDK antibody (Cat# [TA50011-100]). Left: Cell lysates from untransfected HEK293T cells; Right: Cell lysates from HEK293T cells transfected with RC224447 using transfection reagent MegaTran 2.0 (Cat# [TT210002]).