

Product datasheet for **RC224436**

HAND2 (NM_021973) Human Tagged ORF Clone

Product data:

Product Type: Expression Plasmids
Product Name: HAND2 (NM_021973) Human Tagged ORF Clone
Tag: Myc-DDK
Symbol: HAND2
Synonyms: bHLHa26; dHand; DHAND2; Hed; Thing2
Mammalian Cell Selection: Neomycin
Vector: pCMV6-Entry (PS100001)
E. coli Selection: Kanamycin (25 ug/mL)
ORF Nucleotide Sequence: >RC224436 representing NM_021973
Red=Cloning site Blue=ORF Green=Tags(s)

TTTTGTAATACGACTCACTATAGGGCGCCGGGAATTCGTCGACTGGATCCGGTACCGAGGAGATCTGCC
GCC**CGATCGCC**

ATGAGTCTGGTAGGTGGTTTTCCACCACCCGGTGGTGCACCACGAGGGCTACCCGTTTGCCGCCCGC
CCGCCGAGCTGCCGCCGCCGCCAGCCGCTGCAGCCATGAGGAGAACCCTACTTCCATGGCTGGCT
CATCGGCCACCCGAGATGTCGCCCCCGACTACAGCATGGCCCTGTCTACAGCCCGAGTATGCCAGC
GGCCGCCCGGCCTGGACCACTCCATTACGGGGGGTGGCCGCCGGCCGGCCCGCCGGCCCTGGGG
GGCCGCCCGCGTGAAGCGCCGAGGCACCGCAACCGCAAGGAGCGCGCAGGACTCAGAGCATCAACAG
CGCTTCGCCGAAGTGCAGGAGTGCATCCCAAGTACCCGCCGACACCAAACTCTCCAAAATCAAGACC
CTGCGCCTGGCCACCAGCTACATCGCCTACCTCATGGACCTGCTGGCCAAGGACGACCAGAAAGGCGAGG
CGGAGGCCTTCAAGGCAGAGATCAAGAAGACCGACGTGAAAGAGGAGAAGAGGAAGAAGGAGCTGAACGA
AATCTTAAAAAGCACAGTGAGCAGCAACGACAAGAAAACCAAGGCCGGACGGGCTGGCCGAGCAGCTC
TGGGCCCTGGAGCTCAAGCAG

ACGCGTACGCGGCCGCTCGAGCAGAACTCATCTCAGAAGAGGATCTGGCAGCAAATGATATCTGGATT
ACAAGGATGACGACGATAAGGTTTAA



[View online »](#)

Reconstitution Method:

1. Centrifuge at 5,000xg for 5min.
2. Carefully open the tube and add 100ul of sterile water to dissolve the DNA.
3. Close the tube and incubate for 10 minutes at room temperature.
4. Briefly vortex the tube and then do a quick spin (less than 5000xg) to concentrate the liquid at the bottom.
5. Store the suspended plasmid at -20°C. The DNA is stable for at least one year from date of shipping when stored at -20°C.

RefSeq: [NM_021973.3](#)

RefSeq Size: 1234 bp

RefSeq ORF: 654 bp

Locus ID: 9464

UniProt ID: [P61296](#)

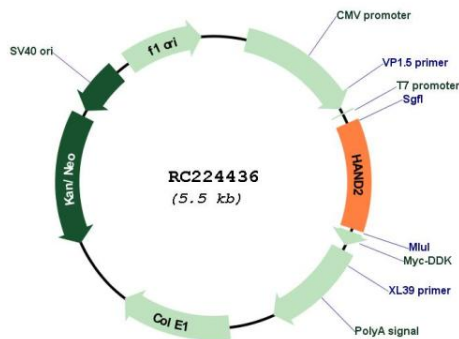
Cytogenetics: 4q34.1

Protein Families: Druggable Genome

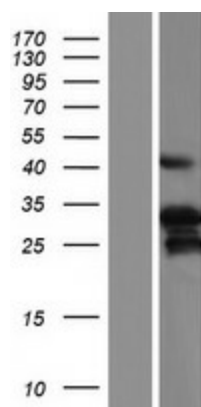
MW: 23.5 kDa

Gene Summary: The protein encoded by this gene belongs to the basic helix-loop-helix family of transcription factors. This gene product is one of two closely related family members, the HAND proteins, which are asymmetrically expressed in the developing ventricular chambers and play an essential role in cardiac morphogenesis. Working in a complementary fashion, they function in the formation of the right ventricle and aortic arch arteries, implicating them as mediators of congenital heart disease. In addition, this transcription factor plays an important role in limb and branchial arch development. [provided by RefSeq, Jul 2008]

Product images:



Circular map for RC224436



Western blot validation of overexpression lysate (Cat# [LY411848]) using anti-DDK antibody (Cat# [TA50011-100]). Left: Cell lysates from untransfected HEK293T cells; Right: Cell lysates from HEK293T cells transfected with RC224436 using transfection reagent MegaTran 2.0 (Cat# [TT210002]).