

Product datasheet for **RC224434**

SR140 (U2SURP) (NM_001080415) Human Tagged ORF Clone

Product data:

Product Type:	Expression Plasmids
Product Name:	SR140 (U2SURP) (NM_001080415) Human Tagged ORF Clone
Tag:	Myc-DDK
Symbol:	SR140
Synonyms:	fSAPa; SR140
Mammalian Cell Selection:	Neomycin
Vector:	pCMV6-Entry (PS100001)
E. coli Selection:	Kanamycin (25 ug/mL)
ORF Nucleotide Sequence:	>RC224434 representing NM_001080415 Red=Cloning site Blue=ORF Green=Tags(s)

TTTTGTAATACGACTCACTATAGGGCGGCCGGAATTCGTCGACTGGATCCGGTACCGAGGAGATCTGCC
GCC**CGATCGCC**

ATGGCGGACAAAACGCCAGGCGGATCTCAGAAGGCCAGTCAAAGACGAGATCATCAGATGTTTCATTCAT
CTGGATCTTCAGATGCACATATGGATGCATCTGGACCCTCAGATAGTGATATGCCAAGTCGGACACGACC
TAAGAGCCCAAGAAAACATAATTATAGGAATGAAAGTGCCCGTGAAGGCCTTTGTGATTCTCCTCATCAG
AATCTCTCAAGACCTCTTCTGAAAACAACTTAAAGCATTTCAGTATTGAAAAATGAGTACAGCTAAGC
GAACTTTAAGTAAAAGAACAGGAAGAATTAAGAAAAAGGAGGATGAAAAGGCAGCTGCTGAGATTTA
TGAGGAGTTTCTTGCTGCTTTTGAAGGAAGTATGGTAATAAAGTGAAAACATTTGTGCGAGGGGTGTT
GTTAATGCAGCTAAAGAAGAACATGAAACAGATGAAAAAGAGGTAAAATCTATAAGCCATCTTCAAGAT
TTGCAGATCAAAAAATCCTCCAATCAGTCTTCCAATGAAAGACCACCATCTCTTCTTGATAGAAAAC
CAAAAAACCTCCACTTAAAAAGGAGAGAAAAGAAAAAGCAATTTGGAACCTTCAAAAGAGAA
TTAAAGCAATTCAGAGGAACGTGATGAGAGACATAAAACAAAAGGCAGATTAAGTCGATTTGAACCTC
CTCAGTCAGATTTCTGATGGTCAGCGTCGTTCTATGGACGCGCCTCAAGAAGAAATAGATCATCTGGTGT
TCTTGATGATTACGCACCTGGCTCACATGATGTAGGAGATCCAAGCACTACTAATTTATACCTTGGAAAC
ATTAATCCACAGATGAATGAAGAAATGCTGTGCCAAGAATTTGGAAGATTTGGACCGTTAGCCAGTGTGA
AAATCATGTGGCCTAGAAGTATGAAGAAAGGCCAGAGAGAGAAATTCGGCTTTGTGGCTTTATGAA
TAGAAGAGATGCTGAAAGAGCTTTAAAAAATTTGAATGAAAAATGATTATGCTTTTGAATGAAGTTA
GGTTGGGGTAAAGCTGTACCTATTCCTCCACATCCAATATACATTCGCTTCTATGATGGAACATACGC
TTCCCCACCTCCATCCGGACTGCCTTTAATGCGCAGCCTAGAGAGCGTTAAAAAACCTAATGCTCC
TATGTTACCGCCACCTAAAAACAAAGAGGATTTGAGAAGACTCTGTGCAAGCCATAGTCAAAGTGTT
ATCCCAACAGAAAGGAATTTGCTCGCCCTGATACATCGAATGATAGAGTTTGTGACGTGAAGGCCAA
TGTTTGAAGCTATGATTATGAACAGAGAAATCAACAATCCTATGTTTCAGGTTCTATTTGAAAACAGAC
ACCAGCCCATGTTACTATAGGTGGAAGCTTTATTCTATTCTGCAGGAGATTCTCCAACAAATGGCGG



[View online »](#)

ACGGAAGATTTTCGTATGTTCAAAAATGGATCTTTTTGGAGGCCACCACCATTAAATCCGTA CTTCATG
 GAATGTCAGAAGACAGAAACAGAAGCTTTTGTAGAGGAACCTAGTAAAAAGGGAGCACTTAAGGAAGA
 ACAGAGGGATAAATTGGAAGAAATCTTGCGGGATTAACCTCAAGGAAAAATGATATTGGAGATGCAATG
 GTTTTCTGTCTTAATAATGCTGAAGCTGCTGAAGAAATAGTGGATTGCATTACTGAGTCGTTGTCCATCT
 TAAAGACACCCCTTCTAAAAAGATTGCCAGATTATATTTGGTTTCTGATGTTTTGTACAACCTTTCAGC
 CAAAGTTGCTAATGCTTCATATTATAGAAAATTTTTGAAACAAAGTTATGTCAGATATTTTCAGACCTC
 AATGCCACCTATCGTACAATTCAAGGCCATTTACAATCTGAAAACCTTAAAGCAACGGGTAATGACTTGCT
 TCAGAGCATGGGAAGATTGGCAATTTATCCAGAACCATTTTTGATCAAACCTACAAAATATTTTCTTAGG
 ACTTGTAAATATTATTGAAGAAAAGAAAACAGAGGATGTTCCAGATGACCTTGATGGTGCCTCCATCGAG
 GAAGAGCTTGATGGTGCACCTCTGGAAGATGTAGATGGAATTCCTATTGATGCTACTCCCATCGATGATC
 TTGATGGAGTCCCTATAAAAAGTCTTGATGATGATCTTGATGGAGTGCCTTTGGATGCAACTGAAGACTC
 AAAAAAGAATGAGCCTATATTTAAAGTTGCCCATCAAATGGGAAGCTGTGGATGAATCTGAATTGGAA
 GCACAGGCTGTTACAACCTCTAAATGGGAATTATTTGACCAGCATGAAGAATCAGAAGAAGAAGAAAATC
 AAAATCAAGAAGAAGAAAGTGAAGATGAAGAAGATACTCAAAGTCCAAATCTGAAGAACATCATTTGTA
 CTCTAATCCAATCAAAGAAGAAATGACTGAGTCTAAGTTCTCTAAGTACTCTGAAATGAGTGAGGAAAAA
 CGAGCCAAACTTCGTGAAATTGAGCTCAAAGTTATGAAGTTTCAGGATGAATTGGAACTGGGAAAAGAC
 CTAAAAAACAGGCCAGAGTTTTTCAGGAGCAAGTAGAACACTACAGAGATAAACTTCTTCAACGAGAGAA
 AGAGAAAGAGTTAGAAAGAGAACGAGAAAGAGACAAGAAAGATAAAGAAAAATTGGAATCTCGCTCCAAA
 GACAAGAAGGAAAAAGATGAGTGTACTCCGACAAGGAAGGAAAGGAGGCGCACACAGTACATCCCCCA
 GCCCATCTCGCAGTAGCAGTGGTAGACGAGTGAATCCCCATCACCAAAATCGGAGCGATCAGAGCGTTC
 AGAAAGATCTCATAAAGAGAGCTCACGGTCCAGGTCATCTCACAAGATTCTCTAGAGATGTTAGCAAA
 AAAGCCAAAAGATCACCATCTGGTTCAAGGACACCTAAAAGGCTTAGGCGATCACGGTCTAGATCTCCTA
 AAAAAATCAGGAAAAGTCCAGATCCAGTCCAGATCTCCACACAGGTCTCATAAAAAGTCAAAGAAAAA
 CAAACAC

ACGCGTACGCGGCCGCTCGAGCAGAACTCATCTCAGAAGAGGATCTGGCAGCAATGATATCCTGGATT
 ACAAGGATGACGACGATAAGGTTTAA

Protein Sequence:

>RC224434 representing NM_001080415

Red=Cloning site Green=Tags(s)

MADKTPGGSQKASSKTRSSDVHSSGSSDAHMDASGPSDSMPSRTRPKSPRKHNRYNESARESLCDSPHQ
 NLSRPLENKLKAFSIGKMSTAKRTL SKKEQEELKKKEDEKAAAEIYEFLAAAFEGSDGNKVKTFVRGGV
 VNAAKEEHETDEKRGKIYKPSRFADQKNPPNQSSNERPPSLLV IETKKPPLKKEKEKKSNLELFKEE
 LKQIQEERDERHKTKGRLSRFEPQSDSGQRRSMDAPSRNRSSGVLDDYAPGSHDVGDPSTTNLYLGN
 INPQMNEEMLCQEFGRFGLASVKIMWPRTDEERARERNCGFVAFMNRDAERALKNLNGKMIMSFEMKL
 GWGKAVPIPPHPYIPPSMMEHTLPPPPSGLPFNAQPRERLKNPNAPMLPPPKNKEDFEKLSQAIKVV
 IPTERNLLAL IHRMIEFVVREGPMFEAMIMNREINNPMFRFLFENQTPAHVYYRWKLYSILQGDSPKWR
 TEDFRMFKNGSFWRPPPLNPLYLHGMSEEQTEAFVEEPSKKGALKKEEQRDKLEEILRGLTPRKNDIGDAM
 VFCLNNAEAAEEIVDCITESLSILKTPLPKIIARLYLVSDVLYNSSAKVANASYYRKFETKLCQIFSDL
 NATYRTIQGHLQSENFQQRVMTCFRAWEDWAIYEPFLIKLQNIIFLGLVNIIEEKETEDVPDDLGDGPIE
 EELDGAPELVDGIPIDATPIDDLGVPKSLDDLDGVPLDATEDSKNEPIFKVAPSKWEAVDESELE
 AQAVTTSKWELFDQHEESEEENQNQEESEDEEDTQSSKSEEHLYSNPIKEEMTESKFSKYSEMSEEK
 RAKLREIELKVMKFQDELESGKRPKPGQSFQEVEHYRDKLLQREKEKELERERERDKKDEKLESRSK
 DKKEKDECTPTRKERRRHSTSPSPSRSSGRRVKSPSPKSERSESSERSHKESSRSSSHKDSRPRVSK
 KAKRSPSGSRTPKRSRRSRSPKSGKKSRSQSRSPHRSHKSKKNKH

TRTRPLEQKLISEEDLAANDILDYKDDDDKV

Chromatograms:

https://cdn.origene.com/chromatograms/mk8043_g04.zip

Restriction Sites:

Sgfl-Mlul

Cloning Scheme:


ACCN: NM_001080415

ORF Size: 3087 bp

OTI Disclaimer: The molecular sequence of this clone aligns with the gene accession number as a point of reference only. However, individual transcript sequences of the same gene can differ through naturally occurring variations (e.g. polymorphisms), each with its own valid existence. This clone is substantially in agreement with the reference, but a complete review of all prevailing variants is recommended prior to use. [More info](#)

OTI Annotation: This clone was engineered to express the complete ORF with an expression tag. Expression varies depending on the nature of the gene.

Components: The ORF clone is ion-exchange column purified and shipped in a 2D barcoded Matrix tube containing 10ug of transfection-ready, dried plasmid DNA (reconstitute with 100 ul of water).

- Reconstitution Method:**
1. Centrifuge at 5,000xg for 5min.
 2. Carefully open the tube and add 100ul of sterile water to dissolve the DNA.
 3. Close the tube and incubate for 10 minutes at room temperature.
 4. Briefly vortex the tube and then do a quick spin (less than 5000xg) to concentrate the liquid at the bottom.
 5. Store the suspended plasmid at -20°C. The DNA is stable for at least one year from date of shipping when stored at -20°C.

RefSeq: [NM_001080415.2](#)

RefSeq Size: 7464 bp

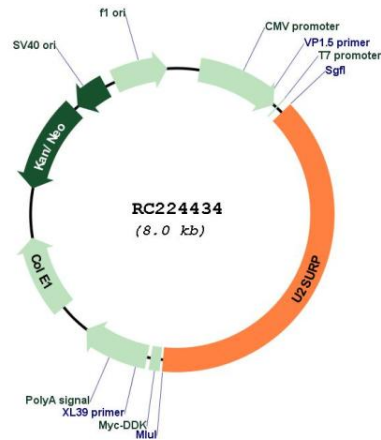
RefSeq ORF: 3090 bp

Locus ID: 23350

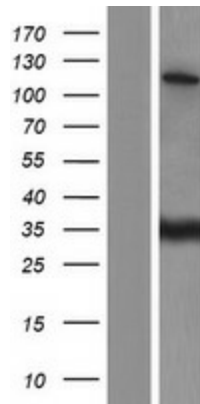
UniProt ID: [O15042](#)

Cytogenetics: 3q23
 Protein Pathways: Spliceosome
 MW: 118.1 kDa

Product images:



Circular map for RC224434



Western blot validation of overexpression lysate (Cat# [LY421632]) using anti-DDK antibody (Cat# [TA50011-100]). Left: Cell lysates from untransfected HEK293T cells; Right: Cell lysates from HEK293T cells transfected with RC224434 using transfection reagent MegaTran 2.0 (Cat# [TT210002]).