

Product datasheet for **RC224421**

Syntrophin (SNTB1) (NM_021021) Human Tagged ORF Clone

Product data:

Product Type:	Expression Plasmids
Product Name:	Syntrophin (SNTB1) (NM_021021) Human Tagged ORF Clone
Tag:	Myc-DDK
Symbol:	Syntrophin
Synonyms:	59-DAP; A1B; BSYN2; DAPA1B; SNT2; SNT2B1; TIP-43
Mammalian Cell Selection:	Neomycin
Vector:	pCMV6-Entry (PS100001)
E. coli Selection:	Kanamycin (25 ug/mL)



[View online »](#)

ORF Nucleotide Sequence:

>RC224421 representing NM_021021
 Red=Cloning site Blue=ORF Green=Tags(s)

TTTTGTAATACGACTCACTATAGGGCGGCCGGGAATTCGTCGACTGGATCCGGTACCGAGGAGATCTGCC
 GCCGCGATCGCC

ATGGCGGTAGCGGCGCGCGCGCGCGGCTGGCCGGCTGGCGGGAGGCGGCCGGCGCAGCGGAGCG
 GGCTGCTGGAAGTTTTGGTGC GGATCGCTGGCACAAAGTTCTGGTGAAC TTGAGCGAGGACGCCCTGGT
 TCTGAGCAGCGAGGAGGGCGCTGCGGCGTACAACGGCATCGGGACCGCCACCAATGGCTCGTTCTGCAGG
 GGCGCGGGGCTGGGCACCCGGGCGCGGCGCGCAGCCCCGGACTCGCCCGCGGGGTCCGCACCG
 CTTTCACCGACCTGCCCGAGCAGGTGCCGAGTCCATCTCGAACCAAGCGTGGCGTGAAGGTGCTGAA
 GCAGGAGCTGGCGGGCTGGGGATCAGCATCAAGGGGGCAAGGAGAACAAGATGCCATCCTCATCAGC
 AAGATCTCAAGGGGCTGGCGCGGACCAGACCAAGCCCTGTACGTGGGCGACGCCATCCTGTCCGTGA
 ACGGAGCCGACCTGCGGGACGCCACCCACGACGAGGCGGTGCAGGCGTTGAAGCGCGGGCAAGGAAGT
 GCTGCTGGAAGTGAAGTACATGCGAGAAGCCACGCCCTATGTGAAGAAAGGATCCCCAGTATCCGAGATT
 GGGTGGGAAACACTCCGCCTGAATCCCCTCGGTTAGGGGGCAGCACCTCAGACCCCGCTCATCGCAGT
 CCTTCTCCTTCCACAGAGACCGGAAAAGCATCCCCCTCAAATGTGCTAGTCACTCGGAGTATGGCCTT
 GGCCGACCCTGAGAACAGGCAGCTTGAATCCACTCTCCAGATGCTAAGCACACGGTGATCCTAAGGAGC
 AAGGACTCAGCCACGGCCAGGCATGGTTCAGTGCCATCCATTCCAACGTTAATGACCTGCTGACCCGAG
 TGATTGCTGAGGTGAGAGCAGCTGGGAAAACAGGCATTGCTGGGAGCCGAGAGATTAGGCATCTTGG
 CTGGCTTGCAAAAAGGTGCCAGGGGAGAGCAAGAAACAGTGGAAACAGCCCTGGTTGTGCTGACTGAG
 AAAGACCTTTTAACTATGACAGCATGCCACGGAGGAAGGAAGCCTGGTTCAGCCAGTTACACATACC
 CTCTTCTGCCACCAGGCTGGTCCATTCAGTCCAGGAAAAGGATCACCCAGGCTGGTGTGGATCTGTC
 CTTTGCAACGCGAACTGGTACCAGGCAAGGGATTGAAACACATCTCTTCAGAGCAGAGACCAGCAGGGAC
 CTCTCCACTGGACAAGGAGCATAGTACAGGGTTCACACAATTCTGCTGAACTATTGCTGAAATCAGCA
 CTGCTTGACCTACAAAAACCAGGAGTGCCGTTTGACCATACATTATGAGAATGGATTTTCTATTACCAC
 TGAACCACAGGAGGGTGCCTTTCCCAAGACCATCATACAGTCTCCTTATGAAAAGCTCAAATGTCTTCA
 GATGATGGAATCAGGATGCTGTATTTAGATTTTGGAGGCAAGATGGAGAGATCAACTGGACCTTCATT
 CCTGCCCAAGCAATTGTTTTATCATTATTCTTCTGTGAGTAAAGATTACAAGACTGGGCTTGGT
 GGCC

ACGCGTACGCGGCGGCTCGAGCAGAAACTCATCTCAGAAGAGGATCTGGCAGCAAATGATATCCTGGATT
 ACAAGGATGACGACGATAAGGTTTAA

Protein Sequence:

>RC224421 representing NM_021021
 Red=Cloning site Green=Tags(s)

MAVAAAAAAGPAGAGGGRAQSRGLLEVLVDRWHKVLVNLSEDALVLSSEEGAAAAYNGIGTATNGSFCR
 GAGAGHPGAGGAQPPDSPAGVRTAFDLDPEQVPESISNQKRGVKVLKQELGGLGISIKGGKENKMPILIS
 KIFKGLAADQTQALYVGDAILSVNGADLRDATHDEAVQALKRAGKEVLLVLYMREATPYVKKQSPVSEI
 GWETPPPEPRLGGSTSDPPSSQSFVHRDRKSIPLKMCYVTRSMALADPENRQLEIHSPPAKHTVILRS
 KDSATAQAWFSAIHSNVNDLLTRVIAEVREQLGKTGIAGSREIRHLGWLAEKVPGESKKQWKPALVVLTE
 KDLLIYDSMPRRKEAWFSPVHTYPLLATRLVHSGPGKQSPQAGVDLSFATRTGTRQGIETHLFRAETSRD
 LSHWTRIVQGCHNSAELIAEISTACTYKNQECRLTIHYENGFSITTEPQEGAFPKTIIQSPYEKLMSS
 DDGIRMLYLDGFGKDEIQLDLHSCPPIVFIHSFSLSAKITRLGLVA

TRTRPLEQKLISEEDLAANDILDYKDDDDKV

Chromatograms:

https://cdn.origene.com/chromatograms/mg3492_g09.zip

Restriction Sites:

Sgfl-Mlul

Cloning Scheme:

ACCN: NM_021021

ORF Size: 1614 bp

OTI Disclaimer: The molecular sequence of this clone aligns with the gene accession number as a point of reference only. However, individual transcript sequences of the same gene can differ through naturally occurring variations (e.g. polymorphisms), each with its own valid existence. This clone is substantially in agreement with the reference, but a complete review of all prevailing variants is recommended prior to use. [More info](#)

OTI Annotation: This clone was engineered to express the complete ORF with an expression tag. Expression varies depending on the nature of the gene.

Components: The ORF clone is ion-exchange column purified and shipped in a 2D barcoded Matrix tube containing 10ug of transfection-ready, dried plasmid DNA (reconstitute with 100 ul of water).

- Reconstitution Method:**
1. Centrifuge at 5,000xg for 5min.
 2. Carefully open the tube and add 100ul of sterile water to dissolve the DNA.
 3. Close the tube and incubate for 10 minutes at room temperature.
 4. Briefly vortex the tube and then do a quick spin (less than 5000xg) to concentrate the liquid at the bottom.
 5. Store the suspended plasmid at -20°C. The DNA is stable for at least one year from date of shipping when stored at -20°C.

RefSeq: [NM_021021.4](#)
RefSeq Size: 2978 bp

RefSeq ORF: 1617 bp

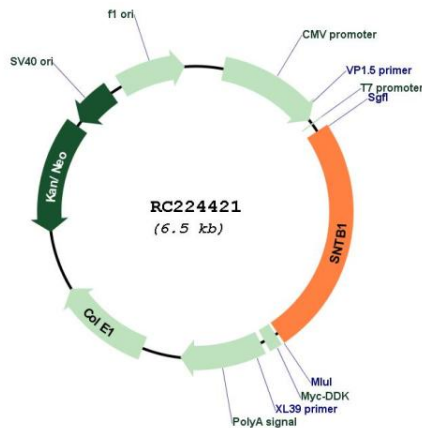
Locus ID: 6641

UniProt ID: [Q13884](#)

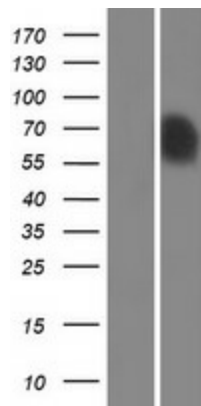
Cytogenetics: 8q24.12
Domains: PDZ, PH
MW: 57.9 kDa

Gene Summary: Dystrophin is a large, rod-like cytoskeletal protein found at the inner surface of muscle fibers. Dystrophin is missing in Duchenne Muscular Dystrophy patients and is present in reduced amounts in Becker Muscular Dystrophy patients. The protein encoded by this gene is a peripheral membrane protein found associated with dystrophin and dystrophin-related proteins. This gene is a member of the syntrophin gene family, which contains at least two other structurally-related genes. [provided by RefSeq, Jul 2008]

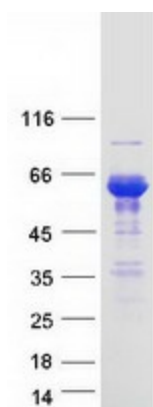
Product images:



Circular map for RC224421



Western blot validation of overexpression lysate (Cat# [LY412146]) using anti-DDK antibody (Cat# [TA50011-100]). Left: Cell lysates from untransfected HEK293T cells; Right: Cell lysates from HEK293T cells transfected with RC224421 using transfection reagent MegaTran 2.0 (Cat# [TT210002]).



Coomassie blue staining of purified SNTB1 protein (Cat# [TP324421]). The protein was produced from HEK293T cells transfected with SNTB1 cDNA clone (Cat# RC224421) using MegaTran 2.0 (Cat# [TT210002]).