

Product datasheet for **RC224420**

CC137 (CCDC137) (NM_199287) Human Tagged ORF Clone

Product data:

Product Type:	Expression Plasmids
Product Name:	CC137 (CCDC137) (NM_199287) Human Tagged ORF Clone
Tag:	Myc-DDK
Symbol:	CC137
Synonyms:	RaRF
Mammalian Cell Selection:	Neomycin
Vector:	pCMV6-Entry (PS100001)
E. coli Selection:	Kanamycin (25 ug/mL)
ORF Nucleotide Sequence:	>RC224420 representing NM_199287 Red=Cloning site Blue=ORF Green=Tags(s)

TTTTGTAATACGACTCACTATAGGGCGGCCGGAATTCGTCGACTGGATCCGGTACCGAGGAGATCTGCC
GCC**CGATCGCC**

ATGGCGGGAGCTGGTCGCGGAGCAGCGGTGTCCAGGGTGCAGGCGGGTCTGGGAGTCCCCGGCGAGCGC
GGGGCGGCAGCAAGTGCAGCCGCTGGGAAGCAGCGCCAGCCCGTGGCCGGGCTTCGCAGCAAAGA
GAAGAAGAAAGTGAAGTCAAGCCCAAGAACCAGGACGAACAGGAGATTCCTTTCCGGCTCCGGGAGATT
ATGAGGAGCCGCAAGAGATGAAAAACCCGATCAGTAACAAGAAGAGGAAGAAAGCAGCCAGGTGACCT
TCAGAAAGACATTGGAGAAGGAAGCAAAGGAGAGGAGCCGACATCGCAGTCCCAAGTTCAAACAGAG
GAAGGGGAGTCCGACGGGCTATATCCACCGCATGCAGCAAGAGGCCAGCATGTGCTGTTCCCTCAGC
AAGAACCAGGCCATCCGGCAGCCAGAGGTGCAGGCAGCTCCCAAGGAGAAGTCTGAGCAGAAAAAGCAA
AAAAAGCGTTCCAGAAGCGGCGACTAGATAAAGTCCGACGGAAAAAGGAGGAAAAGGCGGCAGACAGGCT
GGAGCAGGAGTTGCTCCGAGACCGGTGAAGTTTGGTGAAGTTGCTGTCAGCCCCAGAGCTGACTGCC
AGGCCCCAGAGGAGCGTAAGCAAGGACCAGCCTGGCAGGAGATCGCAGATGCTGCGGATGCTTCTGAGCC
CCGGTGGTGTGTCCAGCCTCTGACCGCTCCCTGGCCCGCCAGCGGATTGTGGAGGAGGAGAGAGCGC
GGCCGTGCAGGCCTACAGAGCGTTGAAGCAGCGGCAGCAGCAGCTGCACGGGAGCGACCCACCTCACT
TCCCGAAGAAGCCAGAGCCGACGCTG

ACGCGTACGCGGCGCTCGAGCAGAAACTCATCTCAGAAGAGGATCTGGCAGCAAATGATATCCTGGATT
ACAAGGATGACGACGATAAGGTTTAA



[View online »](#)

Protein Sequence: >RC224420 representing NM_199287
Red=Cloning site Green=Tags(s)

MAGAGRGAASRVQAGPGSPRRARGRQQVQPLGKQRPAPWPGLRSKEKKKVNCKPKNQDEQEIPFRLREI
MRSRQEMKNPISNKRRKAAQVTRKTLLEKEAKGEEPDIAPKFKQKGEKSDGAYIHRMQQEAQHVLFLS
KNQAIHQPEVQAAPKEKSEQKKAKKAFQKRRLDKVRRKKEEKAADRLEQELLRDTVKFGEVVLQPPELTA
RPQRSVSKDQPGRRSQMLRMLLSPGGVSQPLTASLARQRIVEEERERAVQAYRALKQRQQQLHGERPHLT
SRKKPEPQL

TRTRPLEQKLISEEDLAANDILDYKDDDDKV

Chromatograms: https://cdn.origene.com/chromatograms/ja1476_d07.zip

Restriction Sites: SgfI-MluI

Cloning Scheme:



ACCN: NM_199287

ORF Size: 867 bp

OTI Disclaimer: The molecular sequence of this clone aligns with the gene accession number as a point of reference only. However, individual transcript sequences of the same gene can differ through naturally occurring variations (e.g. polymorphisms), each with its own valid existence. This clone is substantially in agreement with the reference, but a complete review of all prevailing variants is recommended prior to use. [More info](#)

OTI Annotation: This clone was engineered to express the complete ORF with an expression tag. Expression varies depending on the nature of the gene.

Components: The ORF clone is ion-exchange column purified and shipped in a 2D barcoded Matrix tube containing 10ug of transfection-ready, dried plasmid DNA (reconstitute with 100 ul of water).

Reconstitution Method:

1. Centrifuge at 5,000xg for 5min.
2. Carefully open the tube and add 100ul of sterile water to dissolve the DNA.
3. Close the tube and incubate for 10 minutes at room temperature.
4. Briefly vortex the tube and then do a quick spin (less than 5000xg) to concentrate the liquid at the bottom.
5. Store the suspended plasmid at -20°C. The DNA is stable for at least one year from date of shipping when stored at -20°C.

RefSeq: [NM_199287.2](#), [NP_954981.1](#)

RefSeq Size: 2109 bp

RefSeq ORF: 870 bp

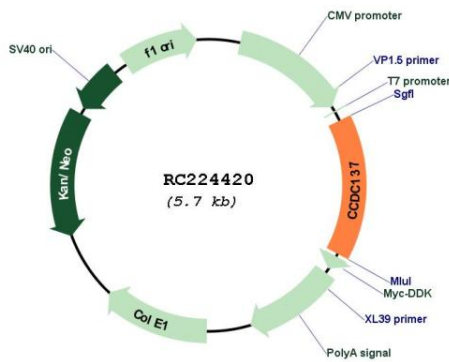
Locus ID: 339230

UniProt ID: [Q6PK04](#)

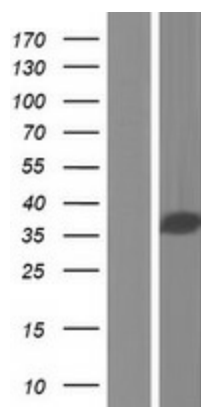
Cytogenetics: 17q25.3

MW: 33.1 kDa

Product images:



Circular map for RC224420



Western blot validation of overexpression lysate (Cat# [LY404608]) using anti-DDK antibody (Cat# [TA50011-100]). Left: Cell lysates from untransfected HEK293T cells; Right: Cell lysates from HEK293T cells transfected with RC224420 using transfection reagent MegaTran 2.0 (Cat# [TT210002]).