

Product datasheet for **RC224418**

KGF (FGF7) (NM_002009) Human Tagged ORF Clone

Product data:

Product Type: Expression Plasmids
Product Name: KGF (FGF7) (NM_002009) Human Tagged ORF Clone
Tag: Myc-DDK
Symbol: FGF7
Synonyms: HBGF-7; KGF
Vector: pCMV6-Entry (PS100001)
E. coli Selection: Kanamycin (25 ug/mL)
Cell Selection: Neomycin
ORF Nucleotide Sequence: >RC224418 representing NM_002009
Red=Cloning site Blue=ORF Green=Tags(s)

TTTTGTAATACGACTCACTATAGGGCGCCGGAATTCGTCGACTGGATCCGGTACCGAGGAGATCTGCC
GCC**CGATCGCC**

ATGCACAAATGGATACTGACATGGATCCTGCCAAGCTTTGCTCTACAGATCATGCTTTCACATTATCTGTC
TAGTGGGTAATATCTTTAGCTTGCAATGACATGACTCCAGAGCAAATGGCTACAAATGTGAAGTGTTC
CAGCCCTGAGCGACACACAAGAAGTTATGATTACATGGAAGGAGGGGATATAAGAGTGAGAAGACTTTC
TGTCGAACACAGTGGTACCTGAGGATCGATAAAAGAGGCAAAAGTAAAAGGGACCCAAGAGATGAAGAATA
ATTACAATATCATGGAATCAGGACAGTGGCAGTTGGAATTGTGGCAATCAAAGGGTGGAAAGTGAATT
CTATCTTGCAATGAACAAGGAAGGAAAAGTCTATGCAAAGAAAGAATGCAATGAAGATTGTAAGTCAAA
GAACTAATTCTGGAAAACCAATCAACACATATGCATCAGCTAAATGGACACACAACGGAGGGGAAATGT
TTGTTGCCTTAAATCAAAGGGGATTCCTGTAAGAGGAAAAAACAAGAAAGAACAAAAACAGCCCA
CTTCTTCCTATGGCAATAACT

ACGCGTACGCGGCCGCTCGAGCAGAACTCATCTCAGAAGAGGATCTGGCAGCAAATGATATCCTGGATT
ACAAGGATGACGACGATAAGGTTTAA

Protein Sequence: >RC224418 representing NM_002009
Red=Cloning site Green=Tags(s)

MHKWILTWILPTLLYRSCFHIIICLVGTISLACNDMTPEQMATNVNCSSPERHTRSVDYMEGGDIRVRRFL
CRTQWYLRIDKRGKVKGTQEMKNYNIMEIRTVAVGIVAIGVSEFYLAMNKEGKLYAKKECNEDCNFK
ELILENHYNITYASAKWTHNGGEMFVALNQKGIPVRGKTKKEQKTAHFLPMAIT

TRTRPLEQKLISEEDLAANDILDYKDDDDKV

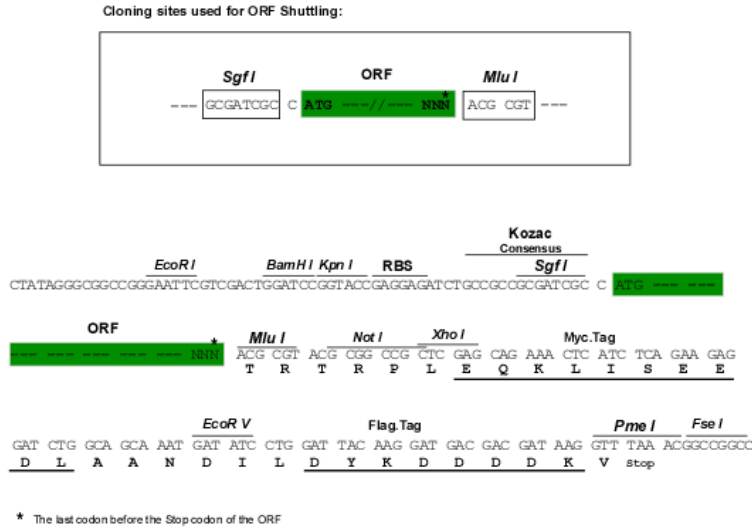
Chromatograms: https://cdn.origene.com/chromatograms/mk6047_a09.zip



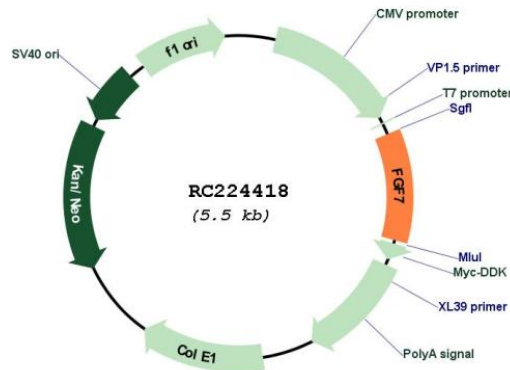
[View online »](#)

Restriction Sites: SgfI-MluI

Cloning Scheme:



Plasmid Map:



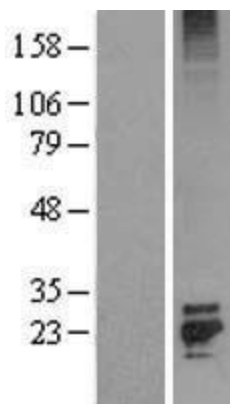
ACCN: NM_002009

ORF Size: 582 bp

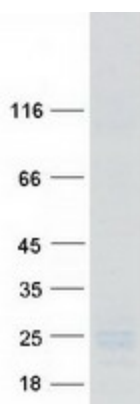
OTI Disclaimer: The molecular sequence of this clone aligns with the gene accession number as a point of reference only. However, individual transcript sequences of the same gene can differ through naturally occurring variations (e.g. polymorphisms), each with its own valid existence. This clone is substantially in agreement with the reference, but a complete review of all prevailing variants is recommended prior to use. [More info](#)

OTI Annotation: This clone was engineered to express the complete ORF with an expression tag. Expression varies depending on the nature of the gene.

Components:	The ORF clone is ion-exchange column purified and shipped in a 2D barcoded Matrix tube containing 10ug of transfection-ready, dried plasmid DNA (reconstitute with 100 ul of water).
Reconstitution Method:	<ol style="list-style-type: none">1. Centrifuge at 5,000xg for 5min.2. Carefully open the tube and add 100ul of sterile water to dissolve the DNA.3. Close the tube and incubate for 10 minutes at room temperature.4. Briefly vortex the tube and then do a quick spin (less than 5000xg) to concentrate the liquid at the bottom.5. Store the suspended plasmid at -20°C. The DNA is stable for at least one year from date of shipping when stored at -20°C.
RefSeq:	NM_002009.4
RefSeq Size:	3853 bp
RefSeq ORF:	585 bp
Locus ID:	2252
UniProt ID:	P21781
Cytogenetics:	15q21.2
Domains:	FGF
Protein Families:	Adult stem cells, Druggable Genome, Embryonic stem cells, ES Cell Differentiation/IPS, Secreted Protein
Protein Pathways:	MAPK signaling pathway, Melanoma, Pathways in cancer, Regulation of actin cytoskeleton
MW:	22.51 kDa
Gene Summary:	The protein encoded by this gene is a member of the fibroblast growth factor (FGF) family. FGF family members possess broad mitogenic and cell survival activities, and are involved in a variety of biological processes, including embryonic development, cell growth, morphogenesis, tissue repair, tumor growth and invasion. This protein is a potent epithelial cell-specific growth factor, whose mitogenic activity is predominantly exhibited in keratinocytes but not in fibroblasts and endothelial cells. Studies of mouse and rat homologs of this gene implicated roles in morphogenesis of epithelium, reepithelialization of wounds, hair development and early lung organogenesis. [provided by RefSeq, Jul 2008]

Product images:

Western blot validation of overexpression lysate (Cat# [LY400734]) using anti-DDK antibody (Cat# [TA50011-100]). Left: Cell lysates from untransfected HEK293T cells; Right: Cell lysates from HEK293T cells transfected with RC224418 using transfection reagent MegaTran 2.0 (Cat# [TT210002]).



Coomassie blue staining of purified FGF7 protein (Cat# [TP324418]). The protein was produced from HEK293T cells transfected with FGF7 cDNA clone (Cat# RC224418) using MegaTran 2.0 (Cat# [TT210002]).